

CITY OF BURNABY

BYLAW NO. 10847

A BYLAW to amend Bylaw No. 4742, being Burnaby Zoning Bylaw 1965, as amended by Bylaw No. 10716, being Burnaby Zoning Bylaw 1965, Amendment Bylaw No. 4, 1998

WHEREAS application for rezoning has been made to the Council;

AND WHEREAS the Council has held a public hearing thereon after duly giving notice of the time and place of such hearing as prescribed by Sections 892 and 893 of the *Municipal Act*, R.S.B.C. 1996;

NOW THEREFORE the Council of the City of Burnaby ENACTS as follows:

1. This Bylaw may be cited as BURNABY ZONING BYLAW 1965, AMENDMENT BYLAW NO. 54, 1998.
2. Bylaw No 4742, as amended by Bylaw No. 10716 is further amended as follows:
 - (a) The Map (hereinafter called "Map 'A'"), attached to and forming an integral part of Bylaw No. 4742, being "Burnaby Zoning Bylaw 1965", and designated as the Official Zoning Map of the City of Burnaby, is hereby amended according to the Map (hereinafter called "Map 'B'"), marginally numbered R.Z. 3172, annexed to this Bylaw, and in accordance with the explanatory legend, notations, references and boundaries designated, described, delimited and specified in particularity shown upon said Map 'B'; and the various boundaries and districts shown upon said Map 'B' respectively are an amendment of and in addition to the respective districts, designated and marked on said Map 'A' insofar as the same are changed, modified or

varied thereby, and the said Map 'A' shall be deemed to be and is hereby declared to be amended accordingly and the said Map 'B' is hereby declared to be and shall form an integral part of said Map 'A', as if originally incorporated therein and shall be interpreted accordingly.

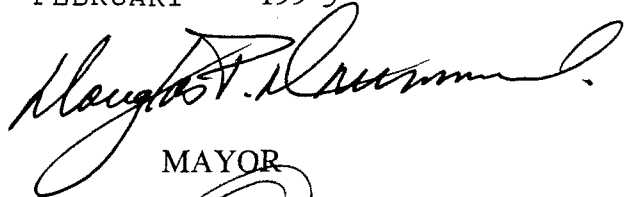
(b) The Comprehensive Development Plan more particularly described in Bylaw No. 10716 is amended as may be necessary by the development plan entitled "GPM DISTRIBUTING" prepared by BEEDIE CONSTRUCTION CO. LTD. and on file in the office of the Director Planning and Building; and any development on the lands rezoned by this Bylaw shall be in conformity with the said Comprehensive Development Plan as amended.

Read a first time this 23rd day of NOVEMBER 1998

Read a second time this 11th day of JANUARY 1999

Read a third time 18th day of JANUARY 1999

Reconsidered and adopted this 1st day of FEBRUARY 1999



MAYOR

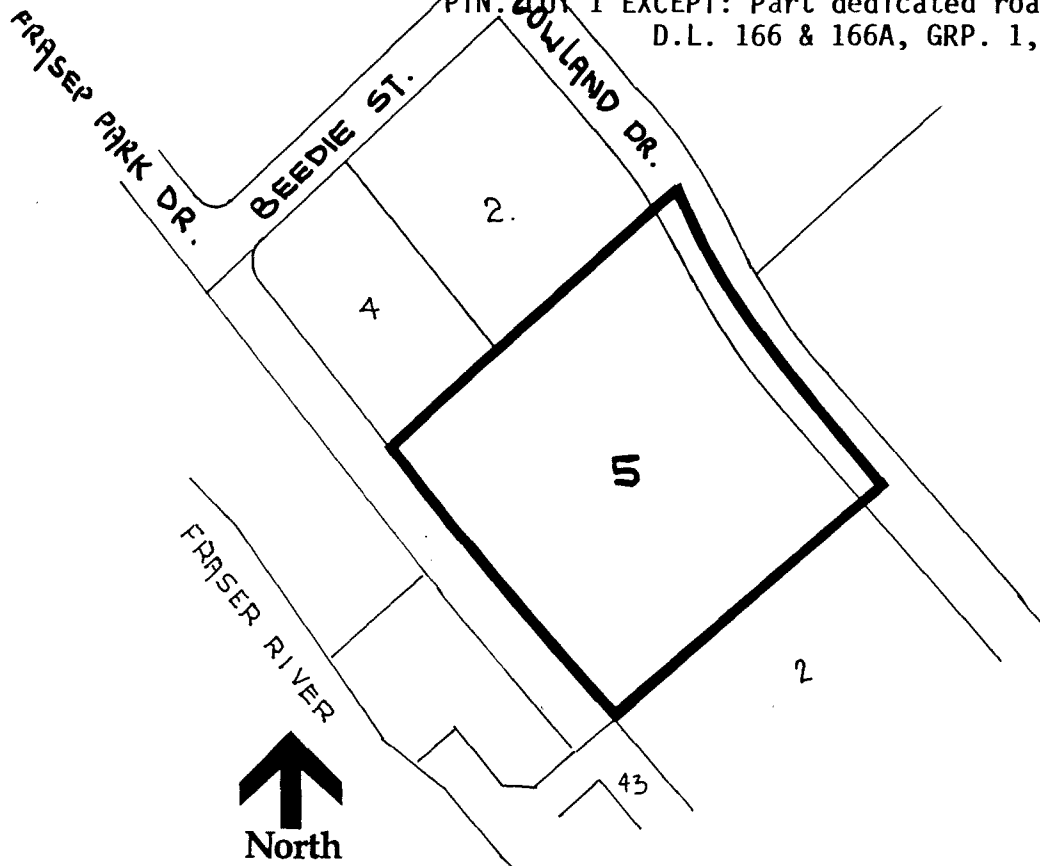


CLERK

**BYLAW NUMBER 10847 BEING A BYLAW TO AMEND REZ 98-27
BYLAW NUMBER 4742 BEING THE BURNABY ZONING BYLAW 1965**

PROPERTY REZONED TO: Amended CD Comprehensive Development District
(based on M2 General Industrial District and M5 Light Industrial District guidelines and in accordance with the development plan entitled "GPM Distributing" prepared by Beedie Construction Co.Ltd.)

LEGAL: PTN. LOT 1, D.L. 166A, GRP. 1, NWD PLAN LMP36023,
PTN. LOT 1 EXCEPT: Part dedicated road on PLAN LMP31102,
D.L. 166 & 166A, GRP. 1, NWD PLAN LMP31099



MAP 'B'

THE AREA(S) SHOWN ABOVE OUTLINED IN BLACK (——) IS (ARE) REZONED:

FROM: CD COMPREHENSIVE DEVELOPMENT DISTRICT (BASED ON M1 MANUFACTURING DISTRICT AND M5 LIGHT INDUSTRIAL DISTRICT GUIDELINES)

TO: CD COMPREHENSIVE DEVELOPMENT DISTRICT (BASED ON M2 GENERAL INDUSTRIAL DISTRICT AND M5 LIGHT INDUSTRIAL DISTRICT GUIDELINES AND IN ACCORDANCE WITH THE DEVELOPMENT PLAN ENTITLED "GPM DISTRIBUTING" PREPARED BY BEEDIE CONSTRUCTION CO. LTD.)

PLANNING DEPARTMENT	
SCALE	N.T.S.
DRAWN	J.P.C.
DATE	NOV. 1998



OFFICIAL ZONING MAP

No. RZ 3172