

CITY OF BURNABY

BYLAW NO. 10720

A BYLAW to amend Bylaw No. 4742, being
Burnaby Zoning Bylaw 1965

WHEREAS application for rezoning has been made to the Council;

AND WHEREAS the Council has held a public hearing thereon after duly giving notice of the hearing as prescribed by sections 892 and 893 of the *Municipal Act* R.S.B.C. 1996;

NOW THEREFORE the Council of the City of Burnaby ENACTS as follows:

1. This Bylaw may be cited as BURNABY ZONING BYLAW 1965, AMENDMENT BYLAW NO. 8, 1998.
2. The map (hereinafter called "Map 'A'") attached to and forming an integral part of Bylaw No. 4742, being Burnaby Zoning Bylaw 1965, and designated as the Official Zoning Map of the City of Burnaby, is hereby amended according to the Map (hereinafter called "Maps 'B'"), marginally numbered R.Z. 3133 annexed to this Bylaw, and in accordance with the explanatory legend, notations, references and boundaries designated, described, delimited and specified in particularity shown upon said Maps 'B', and the various boundaries and districts shown upon said Maps 'B', respectively are an amendment of and in substitution for the respective districts, designated and marked on said Map 'A' insofar as the same are changed, modified or varied thereby, and the said Map 'A' shall be deemed to be and is hereby declared to be amended accordingly and the said Map 'B' is hereby declared to be and shall form an

integral part of said Map 'A' as if originally incorporated therein and shall be interpreted accordingly.

Read a first time this 2nd day of FEBRUARY 1998

Read a second time this 2nd day of MARCH 1998

Read a third time 4th day of MAY 1998

Received the approval of the Minister of Transportation and Highways

this 1st day of JUNE 1998

Reconsidered and adopted this 15th day of JUNE 1998



MAYOR



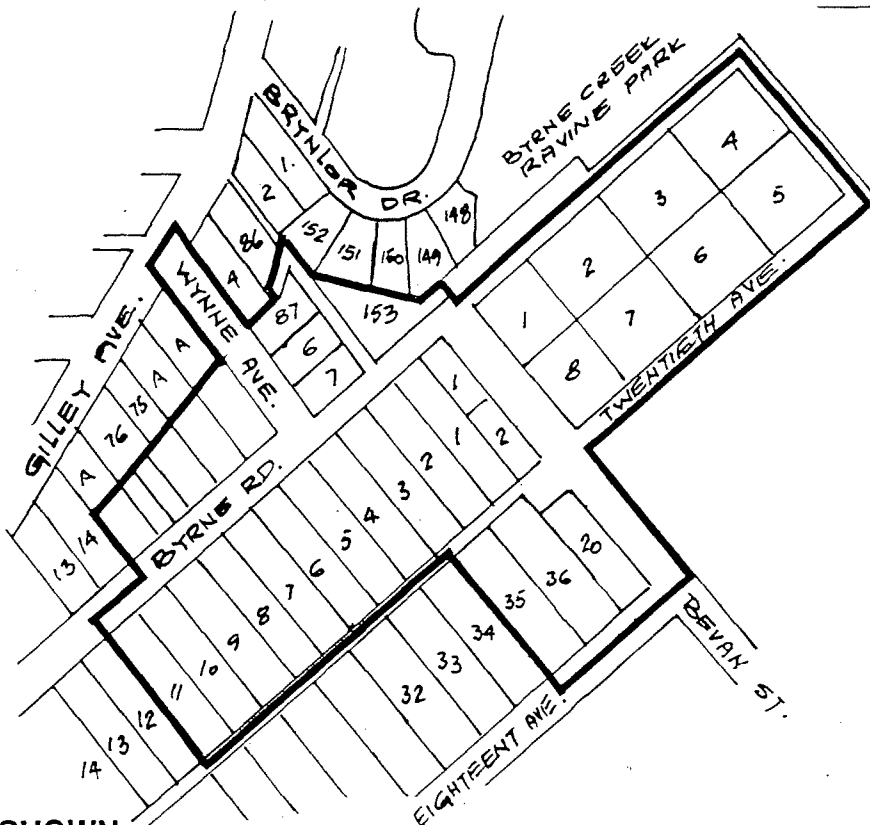
CLERK

BYLAW NUMBER 10720 BEING A BYLAW TO AMEND BYLAW NUMBER 4742 BEING THE BURNABY ZONING BYLAW 1965

PROPERTY REZONED TO: P3 PARK AND PUBLIC USE DISTRICT

LEGAL: SEE ATTACHED SCHEDULE "A"

MAP "B"



THE AREA(S) SHOWN
ABOVE OUTLINED
IN BLACK (——) IS (ARE) REZONED:

FROM: R2 RESIDENTIAL DISTRICT AND
R5 RESIDENTIAL DISTRICT

TO: P3 PARK AND PUBLIC USE DISTRICT

PLANNING
DEPARTMENT

SCALE N.T.S.

DRAWN J.P.C.

DATE JAN. 1998



City of
Burnaby

OFFICIAL ZONING MAP

3133

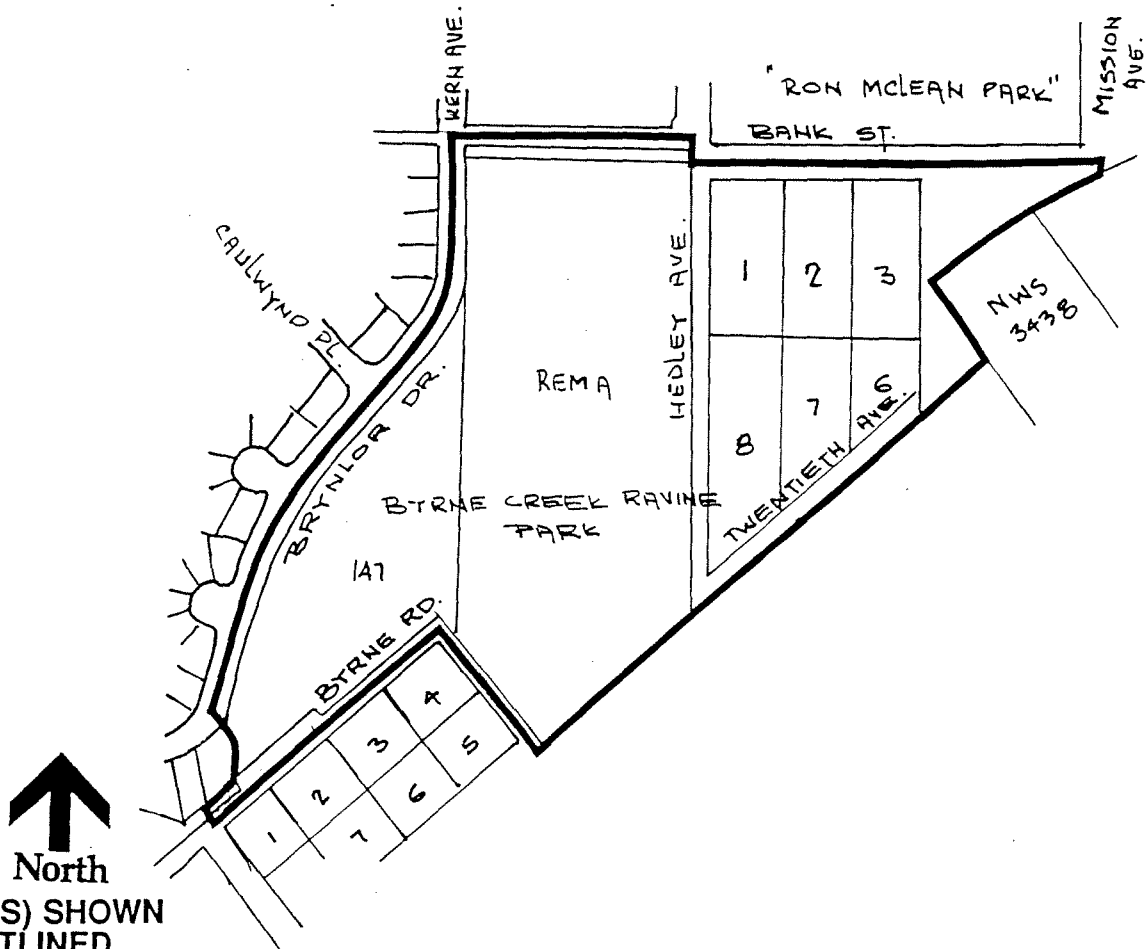
No. RZ 1 OF 11

**BYLAW NUMBER 10720 BEING A BYLAW TO AMEND
BYLAW NUMBER 4742 BEING THE BURNABY ZONING BYLAW 1965**

PROPERTY REZONED TO: P3 PARK AND PUBLIC USE DISTRICT

LEGAL: SEE ATTACHED SCHEDULE "A"

MAP "B"



THE AREA(S) SHOWN
ABOVE OUTLINED
IN BLACK (—) IS
(ARE) REZONED:

FROM: R2 RESIDENTIAL DISTRICT

TO: P3 PARK AND PUBLIC USE DISTRICT

PLANNING
DEPARTMENT

SCALE	N.T.S.
DRAWN	J.P.C.
DATE	JAN. 1998



City of
Burnaby

OFFICIAL ZONING MAP

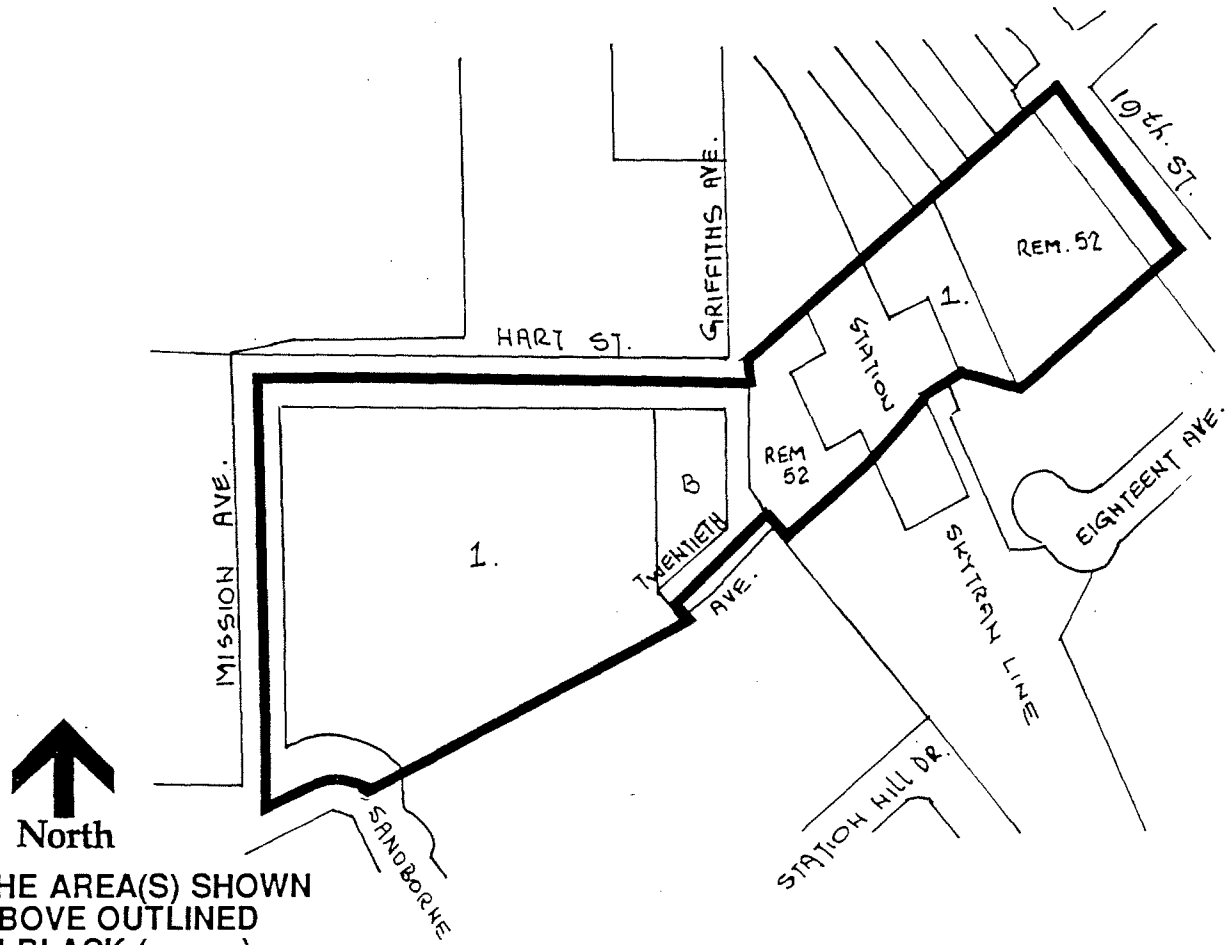
No. RZ 3133
2 of 11

**BYLAW NUMBER 10720 BEING A BYLAW TO AMEND
BYLAW NUMBER 4742 BEING THE BURNABY ZONING BYLAW 1965**

PROPERTY REZONED TO: P3 PARK AND PUBLIC USE DISTRICT

LEGAL: SEE ATTACHED SCHEDULE "A"

MAP "B"



THE AREA(S) SHOWN
ABOVE OUTLINED
IN BLACK (——) IS (ARE) REZONED:

FROM: R5 RESIDENTIAL DISTRICT AND
M2 GENERAL INDUSTRIAL DISTRICT

TO: P3 PARK AND PUBLIC USE DISTRICT

PLANNING
DEPARTMENT

SCALE N.T.S.

DRAWN J.P.C.

DATE JAN. 1998



OFFICIAL ZONING MAP

3133

No. RZ 3 OF 11

SCHEDULE "A"

Rezoning Reference #74/97

BYRNE CREEK RAVINE PARK

(Amendment Bylaw No. 8, 1998; Bylaw No. 10720)

7355 Nineteenth St.	Lot 52 except: Firstly: Parcel "D" (Plan with fee deposited 14587F) Secondly: Parcel "C" (Reference Plan 6916), Thirdly: Part subdivided by Plan 20695, Fourthly: Part subdivided by Plan LMP19410, District Lot 95, Group 1, NWD, Plan 927
7354 Non St.	Lot 1, District Lot 95, Group 1, NWD, Plan 72242
6790 Hart St.	Lot 1, District Lots 160 and 171, Group 1, NWD, Plan LMP19410
6619 Twentieth Ave.	Lot 8, Block 5, District Lot 160, Group 1, NWD, Plan 992
6629 Twentieth Ave.	Lot 7, Block 5, District Lot 160, Group 1, NWD, Plan 992
6649 Twentieth Ave.	Lot 6, Block 5, District Lot 160, Group 1, NWD, Plan 992
6875 Twentieth Ave.	Parcel "B" (Reference Plan 3140) Lot 4, Block 4, District Lot 160, Group 1, NWD, Plan 992
6620 Bank St.	Lot 1, Block 5, District Lot 160, Group 1, NWD, Plan 992
6630 Bank St.	Lot 2, Block 5, District Lot 160, Group 1, NWD, Plan 992
6650 Bank St.	Lot 3, Block 5, District Lot 160, Group 1, NWD, Plan 992
8001 Hedley Ave.) 8009 Hedley Ave.)	District Lot 160, Gp 1, as shown outlined red and lettered "A" on sketch deposited No. 5114, in the District of New Westminster except: Parts subdivided by Plans 11040, 11041 and 11554
6231 Wynne Ave.	Lot 87, District Lot 159, Group 1, NWD, Plan 34767
6261 Wynne Ave.	Lot 6, District Lot 159, Group 1, NWD, Plan 1434
6291 Wynne Ave.	Lot 7, District Lot 159, Group 1, NWD, Plan 1434
6124 Byrne Road	Lot 11, Blk 22, D.L. 155A, Group 1, NWD Plan 1549
6134 Byrne Road	Lot 10, Blk 22, D.L. 155A, Group 1, NWD Plan 1549
6154 Byrne Road	Lot 9, Blk 22, D.L. 155A, Group 1, NWD Plan 1549
6164 Byrne Road	Lot 8, Blk 22, D.L. 155A, Group 1, NWD Plan 1549
6167 Byrne Rd.	Lot 15 Except: Firstly: Part red on Plan with fee deposited 20308E Secondly: Part red on Plan with charge deposited 31846C, District Lot 159, Group 1, NWD, Plan 2014
6177 Byrne Rd.	Parcel D (Reference Plan 1341), Lot 16, District Lot 159, Group 1, NWD, Plan 2014
6174 Byrne Road	Lot 7, Blk 22, D.L. 155A, Group 1, NWD Plan 1549
6184 Byrne Road	Lot 6, Blk 22, D.L. 155A, Group 1, NWD Plan 1549
6194 Byrne Road	Lot 5, Blk 22, D.L. 155A, Group 1, NWD Plan 1549
6197 Byrne Rd.	Lot 16 Except: Firstly: Parcel D (Reference Plan 1341) Secondly: Part on Reference Plan 3582. District Lot 159, Group 1, NWD, Plan 2014
6210 Byrne Road	Lot 4, Blk 22, D.L. 155A, Group 1, NWD Plan 1549
6227 Byrne Rd.	Lot 17, Except: Part on (Explanatory Plan 11459), District Lot 159,

	Group 1, NWD, Plan 2014
6230 Byrne Rd	Lot 3, Blk 22, D.L. 155A, Group 1, NWD Plan 1549
6247 Byrne Rd.	Lot 18, Except: Parcel "A", Reference Plan 2695, District Lot 159 , Group 1, NWD, Plan 2014
6250 Byrne Road	Lot 2, Blk 22, D.L. 155A, Group 1, NWD Plan 1549
6270 Byrne Road	Lot 1, Blk 22, D.L. 155A, Group 1, NWD Plan 1549
6279 Byrne Rd.	Lot 19, Except: Parcel "A" (Explanatory plan 1343) District Lot 159, Group 1, NWD, Plan 2014
6287 Byrne Road	Lot 153, D.L. 159 & 160, Group 1, NWD Plan 57406
6290 Byrne Road	Lot 1, Blk 21, D.L. 155A, Group 1, NWD Plan 1425
6344 Byrne Road)	
6384 Byrne Road)	Lots 1 - 8 inclusive, Block 1A, D.L. 155A, Plan 1425, Group 1, NWD
6426 Byrne Road)	(Absolute fees book, Volume 29, Page 391, Folio 53547E)
6476 Byrne Road)	
6343 Twentieth Ave.)	
6383 Twentieth Ave.)	
6425 Twentieth Ave.)	
6475 Twentieth Ave.)	
7337 Bevan Street	Lot 2, Blk 21, D.L. 155A, Group 1, NWD Plan 1425
7357 Bevan Street	Blk 20, D.L. 155A, Group 1, NWD Plan 1425
8100 Brynlor Drive	Lot 147, D.L.'s 159 & 160. Group 1, NWD Plan 57406
6251 Eighteenth Ave.	Lot 35, Blk 22, D.L. 155A, Group 1, NWD Plan 1549
6271 Eighteenth Ave.	Lot 36, Blk 22, D.L. 155A, Group 1, NWD Plan 1549

BURNABY MOUNTAIN CONSERVATION AREA
(Amendment Bylaw No. 9, 1998; Bylaw No. 10721)

550 Burnaby Mountain Parkway (Ptn.)	Ptn. Lot 2, D.L. 207, Group 1, NWD, Plan LMP24405
800 Burnaby Mountain Parkway (Ptn.)	Ptn. Lot 1, D.L. 207 and 208, Group 1, NWD, Plan LMP24405
1081 Burnaby Mountain Parkway (Ptn.)	Ptn. Lot 2, D.L. 138, Group 1, NWD, Plan LMP24406
Ptn. 7355 Hastings St.	Ptn. Lot 22 Except: Part subdivided by Pl. 85661, D.L. 207, Group 1, NWD Plan 74792

(Park Conservation Area South of Burnaby Mountain Parkway)

699 Burnaby Mountain Parkway (Ptn.)	Ptn. Lot 51, D.L. 207 & 208, Group 1, NWD Plan LMP29938
899 Burnaby Mountain Parkway (Ptn.)	Ptn. Lot 50, D.L. 208, Group 1, NWD Plan LMP29938

DEER LAKE PARK

(Amendment Bylaw No. 10, 1998; Bylaw No. 10722)

- | | |
|----------------------|---|
| 6580 Deer Lake Drive | Parcel "X" (Reference Plan 1178), D.L. 85 Group 1, NWD |
| 6595 Deer Lake Drive | Parcel One,(Explanatory Plan 11839) of Parcel "Y"(Reference Plan 9340), D.L. 85, Group 1, NWD |
| 6596 Deer Lake Drive | Parcel "Y" (Reference Plan 9340), D.L. 85,Group 1, Except: Parcel "One" (Explanatory Plan 11839), NWD |
| 6625 Deer Lake Drive | Lot 3, D.L. 85, Group 1, NWD Plan 83065 |
| 6649 Deer Lake Drive | Lot 2, D.L. 85, Group 1, Plan 9815 Except: Part Subdivided by Plan 54188, NWD |
| 5655 Sperling Ave. | Lot 143, D.L. 85, Group 1, NWD, Plan 36335 |
| 6623 Eagles Dr. | Lot 177, D.L. 85, Group 1, NWD, Plan 44463 |

RIVERWAY GOLF COURSE

(Amendment Bylaw No. 13, 1998; Bylaw No. 10725)

- | | |
|------------------------|--|
| Ptn. 9001 Riverway Pl. | Ptn. Lot B, D.L. 162, 163, 164 & 165, Group 1, NWD Plan LMP31531 |
|------------------------|--|

STILL CREEK TRAIL/CONSERVATION AREA

(Amendment Bylaw No. 14, 1998; Bylaw No. 10726)

- | | |
|------------------------|---|
| 4254 Still Creek Ave. | Lot R, D.L. 70, Group 1, NWD Plan 71013 |
| 4384 Still Creek Dr. | Lot Q, D.L. 70, Group 1, NWD Plan 71013 |
| 2760 Willingdon Ave. S | Part of Lot 4, D.L. 70, Group 1, NWD Plan 13400 as shown on Statutory Right-of-Way Pl.24749 |

BW:yr

98 04 28

(a:\rezoning\scha74.97)