

CITY OF BURNABY

BYLAW NO. 10716

A BYLAW to amend Bylaw No. 4742, being
Burnaby Zoning Bylaw 1965

WHEREAS application for rezoning has been made to the Council;

AND WHEREAS the Council has held a public hearing thereon after duly giving notice of the hearing as prescribed by Sections 892 and 893 of the *Municipal Act*, R.S.B.C. 1996;

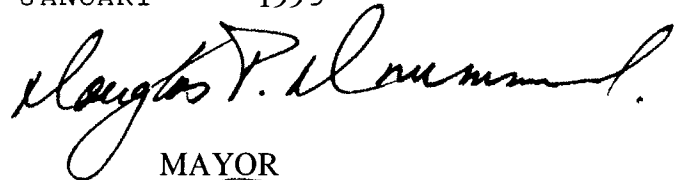
NOW THEREFORE the Council of the City of Burnaby ENACTS as follows:

1. This Bylaw may be cited as BURNABY ZONING BYLAW 1965, AMENDMENT BYLAW NO. 4, 1998.
2. The Map (hereinafter called "Map 'A'"), attached to and forming an integral part of Bylaw No. 4742, being "Burnaby Zoning Bylaw 1965", and designated as the Official Zoning Map of the City of Burnaby, is hereby amended according to the Map (hereinafter called "Map 'B'"), marginally numbered R.Z. 3129, annexed to this Bylaw, and in accordance with the explanatory legend, notations, references and boundaries designated, described, delimited and specified in particularity shown upon said Map 'B'; and the various boundaries and districts shown upon said Map 'B' respectively are an amendment of and in substitution for the respective districts, designated and marked on said Map 'A' insofar as the same are changed, modified or varied thereby, and the said Map 'A' shall be deemed to be and is hereby declared to be

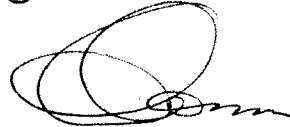
amended accordingly and the said Map 'B' is hereby declared to be and shall form an integral part of said Map 'A', as if originally incorporated therein and shall be interpreted accordingly.

3. The Comprehensive Development Plan entitled "FORESHORE BUSINESS PARK" prepared by COUNSELLOR CONSULTING SERVICES and the COMMUNITY PLAN GUIDELINES prepared by the CITY OF BURNABY, and on file in the office of the Director Planning and Building, is deemed to be attached to and form part of this Bylaw and any development on the lands rezoned by this Bylaw shall be in conformity with the said Comprehensive Development Plan.

Read a first time this	2nd	day of	FEBRUARY	1998
Read a second time this	2nd	day of	MARCH	1998
Read a third time	13th	day of	JULY	1998
Reconsidered and adopted this	18th	day of	JANUARY	1999



MAYOR



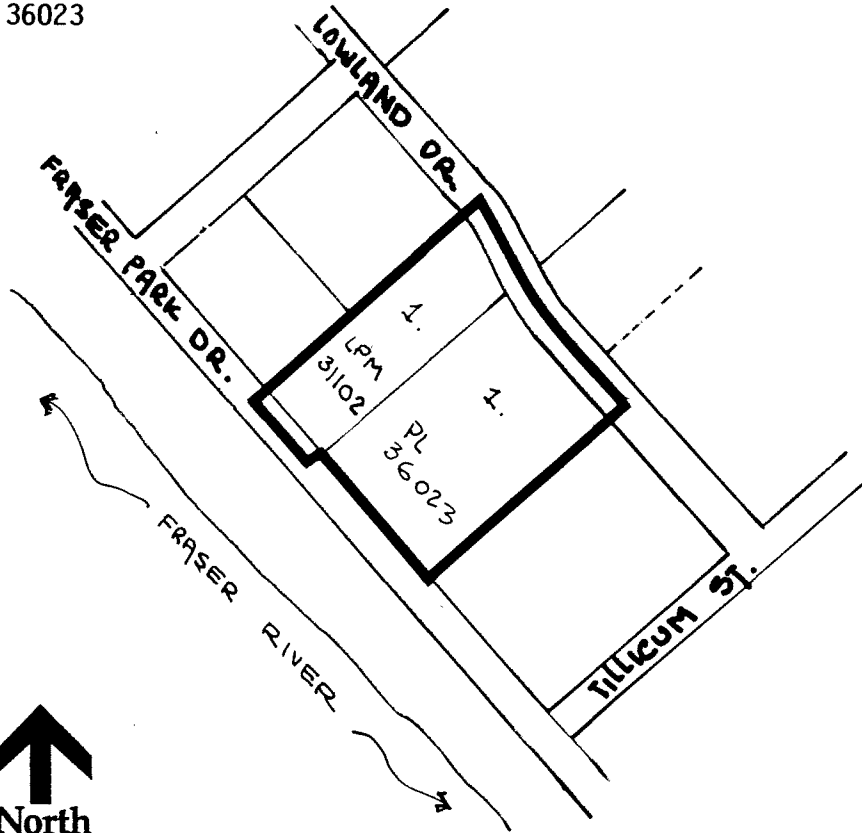
CLERK

BYLAW NUMBER 10716 BEING A BYLAW TO AMEND BYLAW NUMBER 4742 BEING THE BURNABY ZONING BYLAW 1965

PROPERTY REZONED TO: (AMENDED) CD COMPREHENSIVE DEVELOPMENT DISTRICT (BASED ON M2 GENERAL INDUSTRIAL AND M5 LIGHT INDUSTRIAL DISTRICTS USE AND DENSITY AND DEVELOPMENT PLAN ENTITLED "FORESHORE BUSINESS PARK" PREPARED BY COUNSELLOR CONSULTING SERVICES AND COMMUNITY PLAN GUIDELINES PREPARED BY THE CITY OF BURNABY).

LEGAL: PTN. LOT 1 EXCEPT: PART DEDICATED ROAD ON PLAN LMP31102, DISTRICT LOT 166 & 166A, GROUP 1, NWD PLAN LMP31099; PTN. LOT 1, DISTRICT LOT 166A, GROUP 1, NWD PLAN 36023

MAP "B"



THE AREA(S) SHOWN ABOVE OUTLINED IN BLACK (—) IS (ARE) REZONED:

FROM: CD COMPREHENSIVE DEVELOPMENT DISTRICT (BASED ON M1 MANUFACTURING DISTRICT, M5 LIGHT INDUSTRIAL DISTRICT) AND M3 HEAVY INDUSTRIAL DISTRICT

TO: CD COMPREHENSIVE DEVELOPMENT DISTRICT (BASED ON M2 GENERAL INDUSTRIAL DISTRICT AND M5 LIGHT INDUSTRIAL DISTRICT USE AND DENSITY AND DEVELOPMENT PLAN ENTITLED "FORESHORE BUSINESS PARK" PREPARED BY COUNSELLOR CONSULTING SERVICES AND COMMUNITY PLAN GUIDELINES PREPARED BY THE CITY OF BURNABY).

PLANNING DEPARTMENT

SCALE	N.T.S.
DRAWN	J.P.C.
DATE	JANUARY '98



OFFICIAL ZONING MAP

No. RZ 3129