

CITY OF BURNABY

BYLAW NO. 10631

A BYLAW to amend Bylaw No. 4742, being
Burnaby Zoning Bylaw 1965

WHEREAS application for rezoning has been made to the Council;

AND WHEREAS the Council has held a public hearing thereon after duly giving notice of the time and place of such hearing as prescribed by Sections 892 and 893 of the *Municipal Act*, R.S.B.C. 1996;

NOW THEREFORE the Council of the City of Burnaby ENACTS as follows:

1. This Bylaw may be cited as BURNABY ZONING BYLAW 1965, AMENDMENT BYLAW NO. 47, 1997.
2. The Map (hereinafter called "Map 'A'"), attached to and forming an integral part of Bylaw No. 4742, being "Burnaby Zoning Bylaw 1965", and designated as the Official Zoning Map of the City of Burnaby, is hereby amended according to the Map (hereinafter called "Map 'B'"), marginally numbered R.Z. 3109, annexed to this Bylaw, and in accordance with the explanatory legend, notations, references and boundaries designated, described, delimited and specified in particularity shown upon said Map 'B'; and the various boundaries and districts shown upon said Map 'B' respectively are an amendment of and in substitution for the respective districts, designated and marked on said Map 'A' insofar as the same are changed, modified or varied thereby, and the said Map 'A' shall be deemed to be and is hereby declared to be

amended accordingly and the said Map 'B' is hereby declared to be and shall form an integral part of said Map 'A', as if originally incorporated therein and shall be interpreted accordingly.

3. The Comprehensive Development Plan entitled "PRODUCTION COURT LAKE CITY PHASE THREE" prepared by the COHOS, EVAMY INTERPLAN ARCHITECTS, ENGINEERS, INTERIOR DESIGNERS INC. and on file in the office of the Director Planning and Building, is deemed to be attached to and form part of this Bylaw and any development on the lands rezoned by this Bylaw shall be in conformity with the said Comprehensive Development Plan.

Read a first time this 8th day of SEPTEMBER 199 7

Read a second time this 29th day of SEPTEMBER 199 7

Read a third time 26th day of JANUARY 199 8

Received the approval of the Minister of Transportation and Highways
this 26th day of MARCH 199 8

Reconsidered and adopted this 11th day of MAY 199 8



MAYOR



CLERK

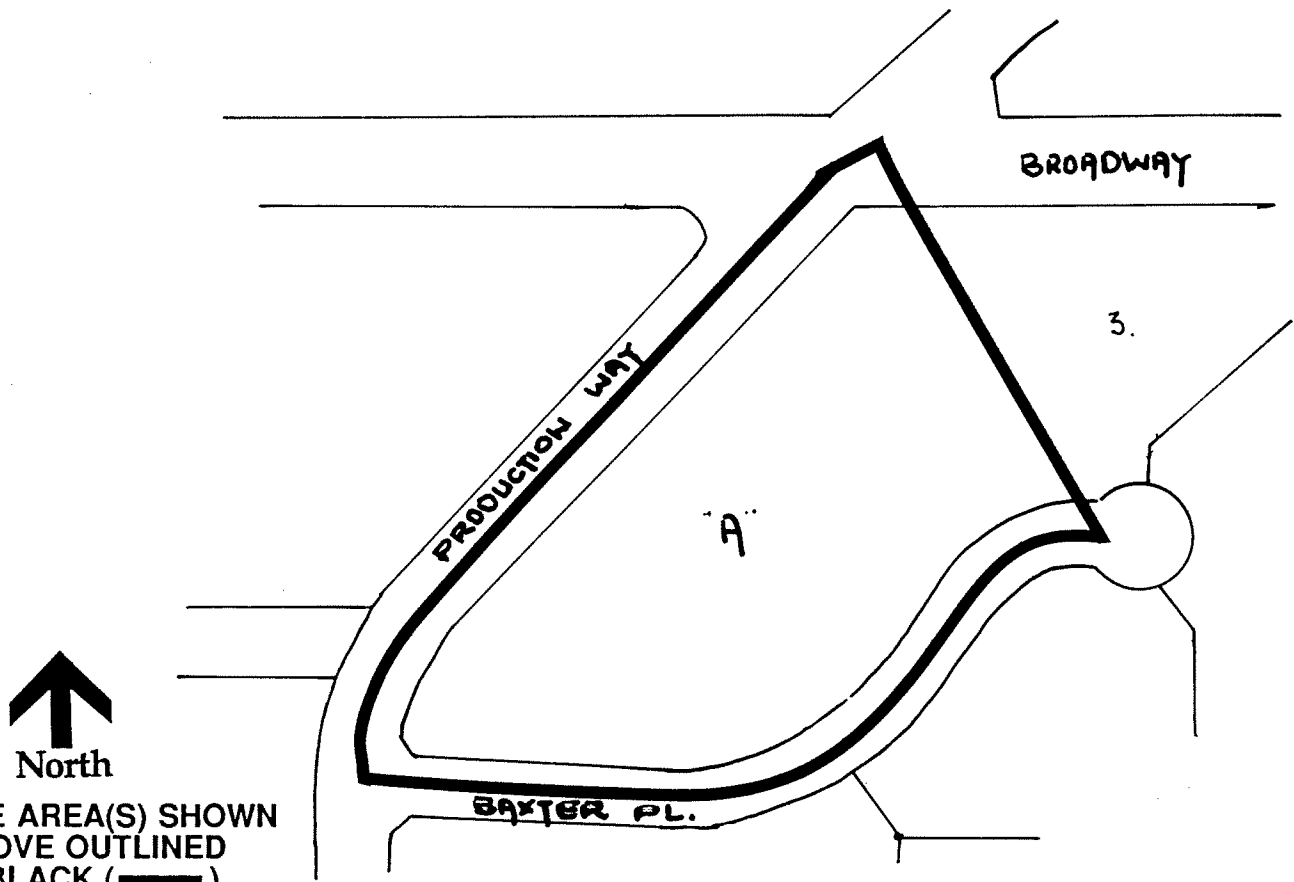
**BYLAW NUMBER 10631 BEING A BYLAW TO AMEND
BYLAW NUMBER 4742 BEING THE BURNABY ZONING BYLAW 1965**

PROPERTY REZONED TO:

CD COMPREHENSIVE DEVELOPMENT DISTRICT (BASED ON M5 LIGHT INDUSTRIAL DISTRICT AND M3 HEAVY INDUSTRIAL DISTRICT AS GUIDELINES AND IN ACCORDANCE WITH THE DEVELOPMENT PLAN ENTITLED "PRODUCTION COURT LAKE CITY PHASE THREE" PREPARED BY COHOS, EVAMY INTERPLAN ARCHITECTS, ENGINEERS, INTERIOR DESIGNERS INC.)

LEGAL: LOT A (BL209640) OF LOTS 1 AND 2, D.L. 56, GROUP 1, NWD PLAN LMP1598

MAP "B"



THE AREA(S) SHOWN ABOVE OUTLINED IN BLACK (—) IS (ARE) REZONED:

FROM: M3 HEAVY INDUSTRIAL DISTRICT

TO: CD COMPREHENSIVE DEVELOPMENT DISTRICT (BASED ON M5 LIGHT INDUSTRIAL DISTRICT AND M3 HEAVY INDUSTRIAL DISTRICT AS GUIDELINES AND IN ACCORDANCE WITH THE DEVELOPMENT PLAN ENTITLED "PRODUCTION COURT LAKE CITY PHASE THREE" PREPARED BY COHOS, EVAMY INTERPLAN ARCHITECTS, ENGINEERS, INTERIOR DESIGNERS INC.)

PLANNING DEPARTMENT

SCALE 1:2500

DRAWN J.P.C.

DATE AUGUST 1997



OFFICIAL ZONING MAP

No. RZ 3109