

CITY OF BURNABY

BYLAW NO. 10471

A BYLAW to amend Bylaw No. 4742, being Burnaby Zoning Bylaw 1965, as amended by Bylaw No. 9038, being Burnaby Zoning Bylaw 1965, Amendment Bylaw No. 44, 1988

WHEREAS application for rezoning has been made to the Council;

AND WHEREAS the Council has held a public hearing thereon after duly giving notice of the hearing as prescribed by Sections 956 and 957 of the Municipal Act R.S.B.C. 1979;

NOW THEREFORE the Council of the City of Burnaby ENACTS as follows:

1. This Bylaw may be cited as BURNABY ZONING BYLAW 1965, AMENDMENT BYLAW NO. 52, 1996.

2. Bylaw No 4742, as amended by Bylaw No. 9038, is further amended as follows:

(a) The Map (hereinafter called "Map 'A'"), attached to and forming an integral part of Bylaw No. 4742, being "Burnaby Zoning Bylaw 1965", and designated as the Official Zoning Map of the City of Burnaby, is hereby amended according to the Map (hereinafter called "Map 'B'"), marginally numbered R.Z. 3054, annexed to this Bylaw, and in accordance with the explanatory legend, notations, references and boundaries designated, described, delimited and specified in particularity shown upon said Map 'B'; and the various boundaries and districts shown upon said Map 'B' respectively are an amendment of and in addition to the respective districts, designated and marked on said Map 'A' insofar as the same are changed, modified or varied thereby, and the said Map 'A' shall be deemed to be and is hereby declared to be

amended accordingly and the said Map 'B' is hereby declared to be and shall form an integral part of said Map 'A', as if originally incorporated therein and shall be interpreted accordingly.

(b) The Comprehensive Development Plan more particularly described in Bylaw No. 9038 is amended as may be necessary by the development plan entitled "PROPOSED ADDITION FOR M.P.R. HOLDINGS LTD." prepared by J.T. ENGINEERING & MANAGEMENT LTD. and filed in the office of the Director Planning and Building; and any development on the lands rezoned by this Bylaw shall be in conformity with the said Comprehensive Development Plan as amended.

Read a first time this	30th	day of	SEPTEMBER	1996
Read a second time this	28th	day of	OCTOBER	1996
Read a third time	14th	day of	APRIL	1997
Reconsidered and adopted this	21st	day of	APRIL	1997



MAYOR



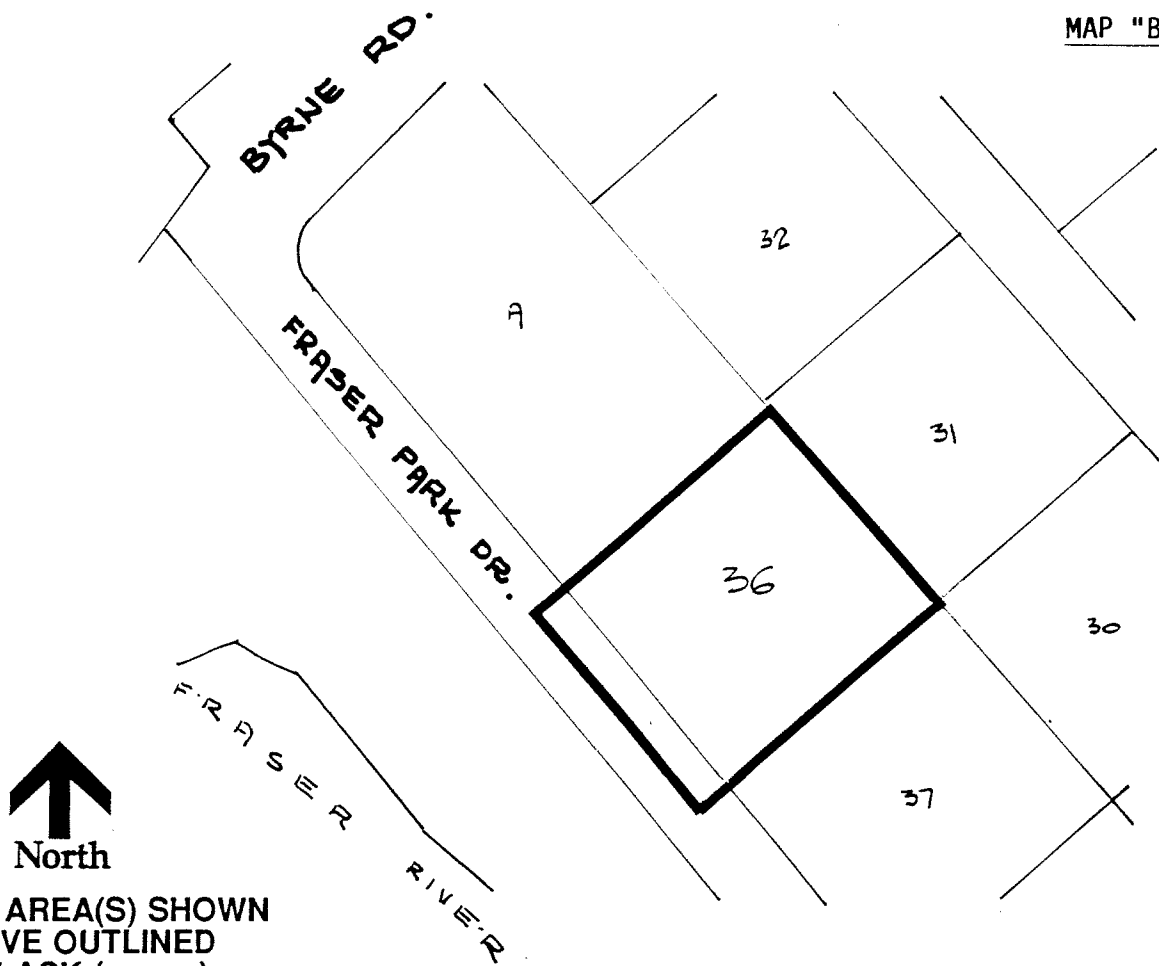
CLERK

**BYLAW NUMBER 10471 BEING A BYLAW TO AMEND
BYLAW NUMBER 4742 BEING THE BURNABY ZONING BYLAW 1965**

PROPERTY REZONED TO: AMENDED CD COMPREHENSIVE DEVELOPMENT DISTRICT (BASED ON M1 MANUFACTURING DISTRICT AND M5 LIGHT INDUSTRIAL DISTRICT GUIDELINES, AND IN ACCORDANCE WITH THE DEVELOPMENT PLAN ENTITLED "PROPOSED ADDITION FOR M.P.R. HOLDINGS LTD." PREPARED BY J.T. ENGINEERING & MANAGEMENT LTD.)

LEGAL: LOT 36, D.L. 166A, GROUP 1, NWD PLAN 48494

MAP "B"



THE AREA(S) SHOWN
ABOVE OUTLINED
IN BLACK (———)
IS (ARE) REZONED:

FROM: CD COMPREHENSIVE DEVELOPMENT DISTRICT (BASED ON M1 MANUFACTURING DISTRICT AND M5 LIGHT INDUSTRIAL DISTRICT GUIDELINES)

TO: CD COMPREHENSIVE DEVELOPMENT DISTRICT (BASED ON M1 MANUFACTURING DISTRICT AND M5 LIGHT INDUSTRIAL DISTRICT GUIDELINES, AND IN ACCORDANCE WITH THE DEVELOPMENT PLAN ENTITLED "PROPOSED ADDITION FOR M.P.R. HOLDINGS LTD." PREPARED BY J.T. ENGINEERING & MANAGEMENT LTD.)

PLANNING DEPARTMENT	
SCALE	1:2000
DRAWN	J.P.C.
DATE	SEPT. 1996



OFFICIAL ZONING MAP

No. RZ 3054