

CITY OF BURNABY

BYLAW NO. 10428

A BYLAW to amend Bylaw No. 4742, being Burnaby Zoning Bylaw 1965, as amended by Bylaw No. 9891, being Burnaby Zoning Bylaw 1965, Amendment Bylaw No. 23, 1993

WHEREAS application for rezoning has been made to the Council;

AND WHEREAS the Council has held a public hearing thereon after duly giving notice of the hearing as prescribed by Sections 956 and 957 of the Municipal Act R.S.B.C. 1979;

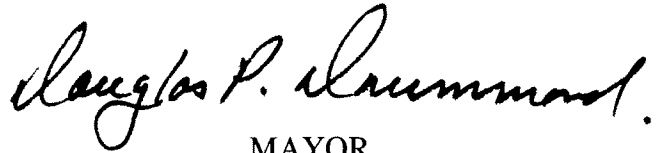
NOW THEREFORE the Council of the City of Burnaby ENACTS as follows:

1. This Bylaw may be cited as BURNABY ZONING BYLAW 1965, AMENDMENT BYLAW NO. 44, 1996.
2. Bylaw No 4742, as amended by Bylaw No. 9891, is further amended as follows:
 - (a) The Map (hereinafter called "Map 'A'"), attached to and forming an integral part of Bylaw No. 4742, being "Burnaby Zoning Bylaw 1965", and designated as the Official Zoning Map of the City of Burnaby, is hereby amended according to the Map (hereinafter called "Map 'B'"), marginally numbered R.Z. 3046, annexed to this Bylaw, and in accordance with the explanatory legend, notations, references and boundaries designated, described, delimited and specified in particularity shown upon said Map 'B'; and the various boundaries and districts shown upon said Map 'B' respectively are an amendment of and in addition to the respective districts, designated and marked on said Map 'A' insofar as the same are changed, modified or varied thereby, and the said Map 'A' shall be deemed to be and is hereby declared to be

amended accordingly and the said Map 'B' is hereby declared to be and shall form an integral part of said Map 'A', as if originally incorporated therein and shall be interpreted accordingly.

(b) The Comprehensive Development Plan more particularly described in Bylaw No. 9891 is amended as may be necessary by the development plan entitled "NIKKEI PLACE SAKURA-SO SENIORS HOUSING" prepared by JOINT VENTURE ARCHITECTS, INC. and filed in the office of the Director Planning and Building; and any development on the lands rezoned by this Bylaw shall be in conformity with the said Comprehensive Development Plan as amended.

Read a first time this	12 th	day of	AUGUST	1996
Read a second time this	9 th	day of	SEPTEMBER	1996
Read a third time	21 st	day of	OCTOBER	1996
Reconsidered and adopted this	17 th	day of	FEBRUARY	1997



MAYOR

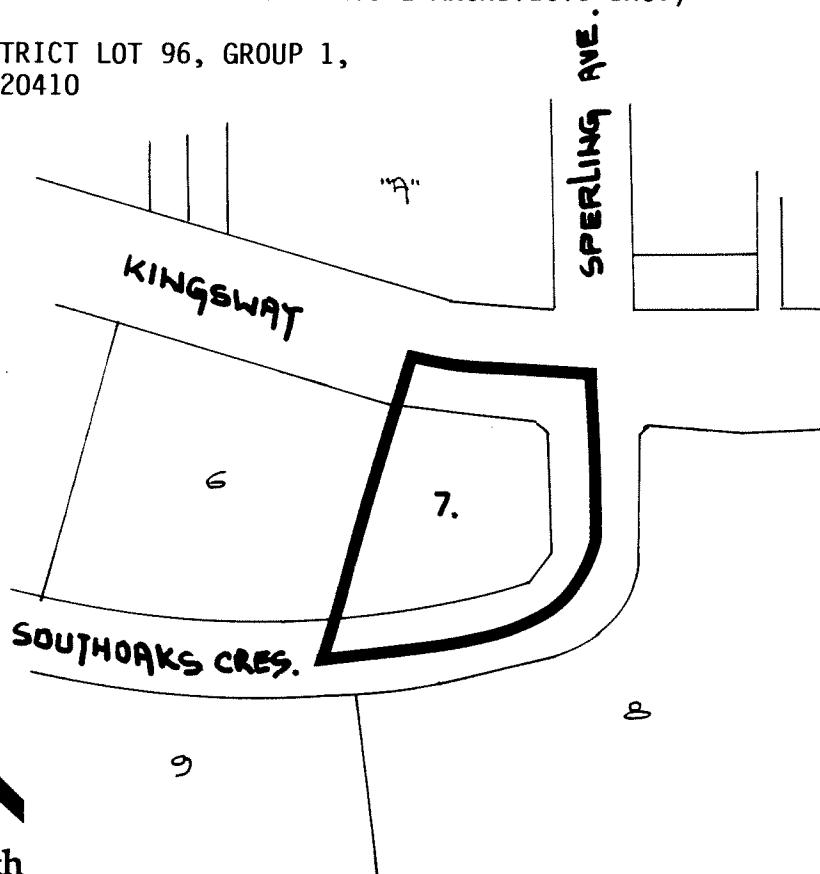


CLERK

**BYLAW NUMBER 10428 BEING A BYLAW TO AMEND
BYLAW NUMBER 4742 BEING THE BURNABY ZONING BYLAW 1965**

PROPERTY REZONED TO: CD COMPREHENSIVE DEVELOPMENT DISTRICT
(BASED ON RM3 MULTIPLE FAMILY RESIDENTIAL DISTRICT
TO ACCOMMODATE THE SPECIFIC PROJECT DENSITY AND USE
AND IN ACCORDANCE WITH THE DEVELOPMENT PLAN ENTITLED
"NIKKEI PLACE SAKURA-SO SENIORS HOUSING" PREPARED BY
JOINT VENTURE ARCHITECTS. INC.)

LEGAL: LOT 7, DISTRICT LOT 96, GROUP 1,
NWD, PLAN 20410



**THE AREA(S) SHOWN
ABOVE OUTLINED
IN BLACK (———)
IS (ARE) REZONED:**

FROM: CD COMPREHENSIVE DEVELOPMENT DISTRICT (BASED ON
RM4 MULTIPLE FAMILY RESIDENTIAL DISTRICT)

TO: CD COMPREHENSIVE DEVELOPMENT DISTRICT
(BASED ON RM3 MULTIPLE FAMILY RESIDENTIAL DISTRICT
TO ACCOMMODATE THE SPECIFIC PROJECT DENSITY AND USE
AND IN ACCORDANCE WITH THE DEVELOPMENT PLAN ENTITLED "NIKKEI PLACE
SAKURA-SO SENIORS HOUSING" PREPARED BY JOINT VENTURE ARCHITECTS, INC.)

PLANNING DEPARTMENT	
SCALE	1:2000
DRAWN	J.P.S.
DATE	JULY 1996



OFFICIAL ZONING MAP

No. RZ 3046