

CITY OF BURNABY

BYLAW NO. 10325

A BYLAW to amend Bylaw No. 4742, being Burnaby Zoning Bylaw 1965, as amended by Bylaw No. 7518, being Burnaby Zoning Bylaw 1965, Amendment Bylaw No. 23, 1980

WHEREAS application for rezoning has been made to the Council;

AND WHEREAS the Council has held a public hearing thereon after duly giving notice of the time and place of such hearing as prescribed by Sections 956 and 957 of the Municipal Act, R.S.B.C. 1979;

NOW THEREFORE the Council of the City of Burnaby ENACTS as follows:

1. This Bylaw may be cited as BURNABY ZONING BYLAW 1965, AMENDMENT BYLAW NO. 1, 1996.
2. The Map (hereinafter called "Map 'A'"), attached to and forming an integral part of Bylaw No. 4742, being "Burnaby Zoning Bylaw 1965", and designated as the Official Zoning Map of the City of Burnaby, is hereby amended according to the Map (hereinafter called "Map 'B'"), marginally numbered R.Z. 3010 annexed to this Bylaw, and in accordance with the explanatory legend, notations, references and boundaries designated, described, delimited and specified in particularity shown upon said Map 'B'; and the various boundaries and districts shown upon said Map 'B' respectively are an amendment of and in substitution for the respective districts, designated and marked on said Map 'A' insofar as the same are changed, modified or varied thereby, and the said Map 'A' shall be deemed to be and is hereby declared to be amended accordingly and the said Map 'B' is hereby declared to be and shall form an integral part of said Map 'A', as if originally incorporated therein and shall be interpreted accordingly.

3. The Comprehensive Development Plan entitled "COMMERCIAL BUILDING ON 4488 HALIFAX STREET, BURNABY" prepared by RAYMOND CHING ARCHITECT & ASSOCIATES and on file in the office of the Director Planning and Building, is deemed to be attached to and form part of this Bylaw and any development on the lands rezoned by this Bylaw shall be in conformity with the said Comprehensive Development Plan.

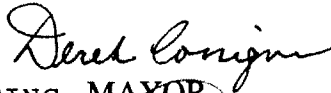

Read a first time this 8th day of JANUARY 1996

Read a second time this 5th day of FEBRUARY 1996

Read a third time 22nd day of JULY 1996

Received the approval of the Minister of Transportation and Highways
this 7th day of AUGUST 1996

Reconsidered and adopted this 9th day of SEPTEMBER 1996


ACTING MAYOR

CLERK

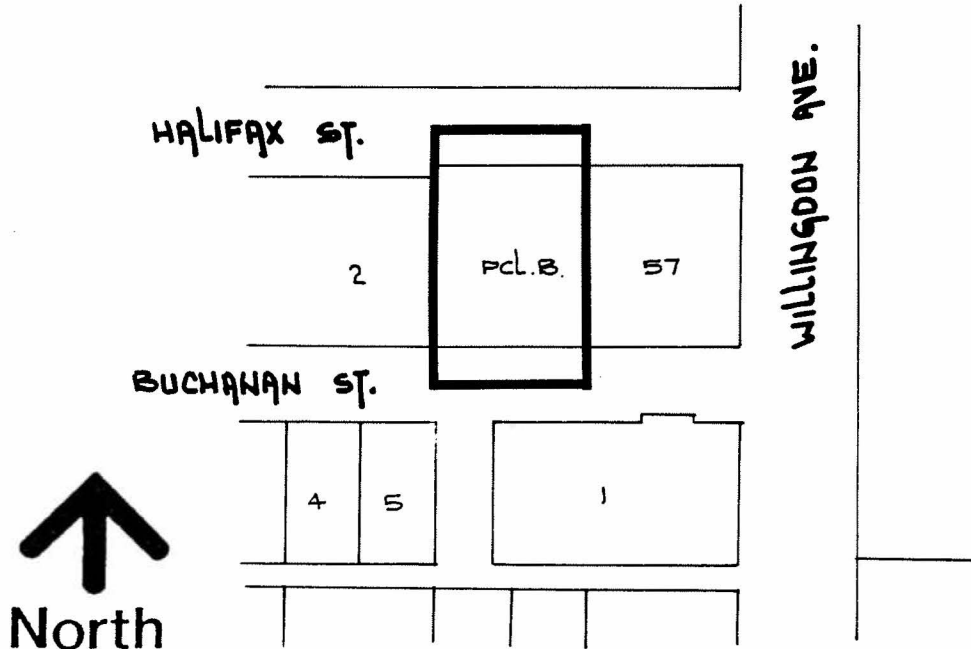
**BYLAW NUMBER 10325 BEING A BYLAW TO AMEND
BYLAW NUMBER 4742 BEING THE BURNABY ZONING BYLAW 1965**

PROPERTY REZONED TO:

(AMENDED) CD COMPREHENSIVE DEVELOPMENT DISTRICT (BASED ON C3 GENERAL COMMERCIAL DISTRICT GUIDELINES AND IN ACCORDANCE WITH THE DEVELOPMENT PLAN PREPARED BY RAYMOND CHING ARCHITECT & ASSOCIATES)

LEGAL: Parcel "B", D.L. 119, Group 1, NWD Plan RP62766

Map "B"



**THE AREA(S) SHOWN
ABOVE OUTLINED
IN BLACK (———)
IS (ARE) REZONED:**

From: CD Comprehensive Development District (based on C2 Community Commercial District guidelines)

To: CD Comprehensive Development District (based on C3 General Commercial District guidelines and in accordance with the Development Plan prepared by Raymond Ching Architect & Associates)

**PLANNING
DEPARTMENT**

SCALE 1:2000

DRAWN J.P.C.

DATE JANUARY 1996



City of
Burnaby

OFFICIAL ZONING MAP

No. RZ 3010