

CITY OF BURNABY

BYLAW NO. 10248

**A BYLAW to amend Bylaw No. 4742, being
Burnaby Zoning Bylaw 1965**

WHEREAS application for rezoning has been made to the Council;

AND WHEREAS the Council has held a public hearing thereon after duly giving notice of the hearing as prescribed by sections 956 and 957 of the Municipal Act R.S.B.C. 1979;

NOW THEREFORE the Council of the City of Burnaby **ENACTS** as follows:

1. This Bylaw may be cited as **BURNABY ZONING BYLAW 1965, AMENDMENT BYLAW NO. 32, 1995.**

2. The map (hereinafter called "Map 'A'") attached to and forming an integral part of Bylaw No. 4742, being Burnaby Zoning Bylaw 1965, and designated as the Official Zoning Map of the City of Burnaby, is hereby amended according to the Map (hereinafter called "Maps 'B'"), marginally numbered R.Z. 2092 annexed to this Bylaw, and in accordance with the explanatory legend, notations, references and boundaries designated, described, delimited and specified in particularity shown upon said Maps 'B', and the various boundaries and districts shown upon said Maps 'B', respectively are an amendment of and in substitution for the respective districts, designated and marked on said Map 'A' insofar as the same are changed, modified or varied thereby, and the said Map 'A' shall be deemed to be and is hereby declared to be amended accordingly and the said Map 'B' is hereby declared to be and shall form an

integral part of said Map 'A' as if originally incorporated therein and shall be interpreted accordingly.



Read a first time this 14th day of AUGUST 1995

Read a second time this 11th day of SEPTEMBER 1995

Read a third time this 18th day of DECEMBER 1995

Received the approval of the Minister of Transportation and Highways
this 3rd day of JANUARY 1996

Reconsidered and adopted this 22nd day of JANUARY 1996


MAYOR

CLERK

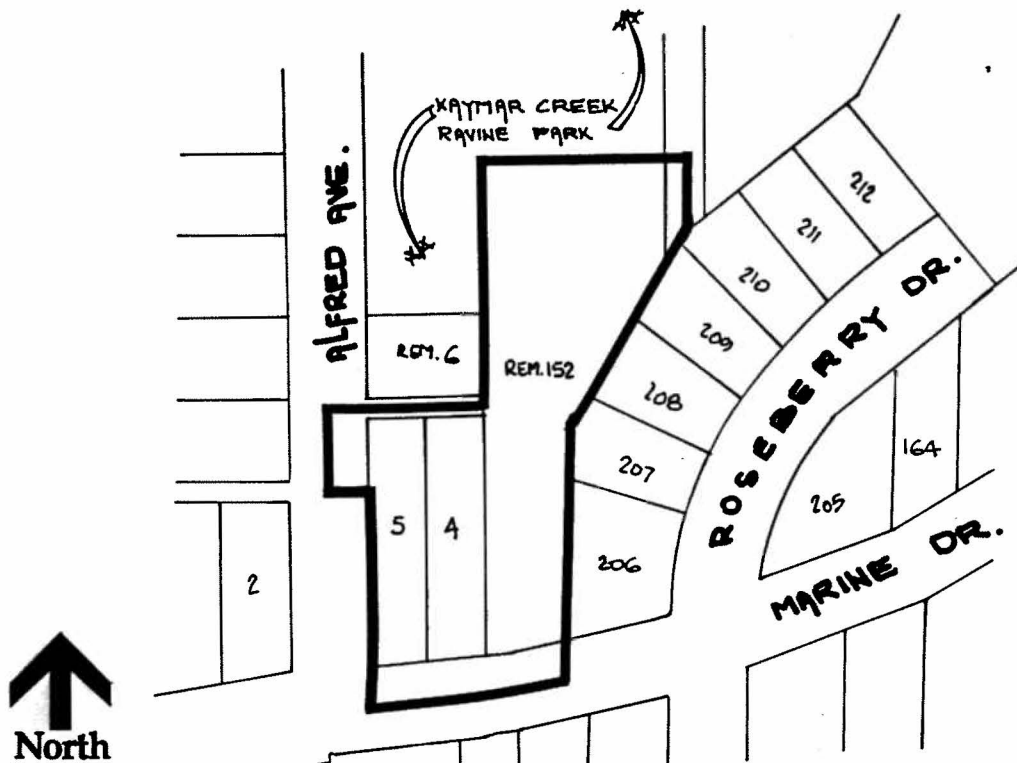
**BYLAW NUMBER 10248 BEING A BYLAW TO AMEND
BYLAW NUMBER 4742 BEING THE BURNABY ZONING BYLAW 1965**

PROPERTY REZONED TO:

P3 PARK & PUBLIC USE

LEGAL: LOTS 4, 5, BLK 2, D.L. 175, GROUP 1, NWD PLAN 1332; LOT 152 EXCEPT: PART SUBDIVIDED BY PLAN 46558; D.L. 175, GROUP 1, NWD PLAN 25291

MAP "B"



**THE AREA(S) SHOWN
ABOVE OUTLINED
IN BLACK (———)
IS (ARE) REZONED:**

FROM: R2 RESIDENTIAL DISTRICT
TO: P3 PARK & PUBLIC USE DISTRICT

PLANNING DEPARTMENT	
SCALE	1:2000
DRAWN	J.P.C.
DATE	JUNE 1995



OFFICIAL ZONING MAP

No. RZ 2092

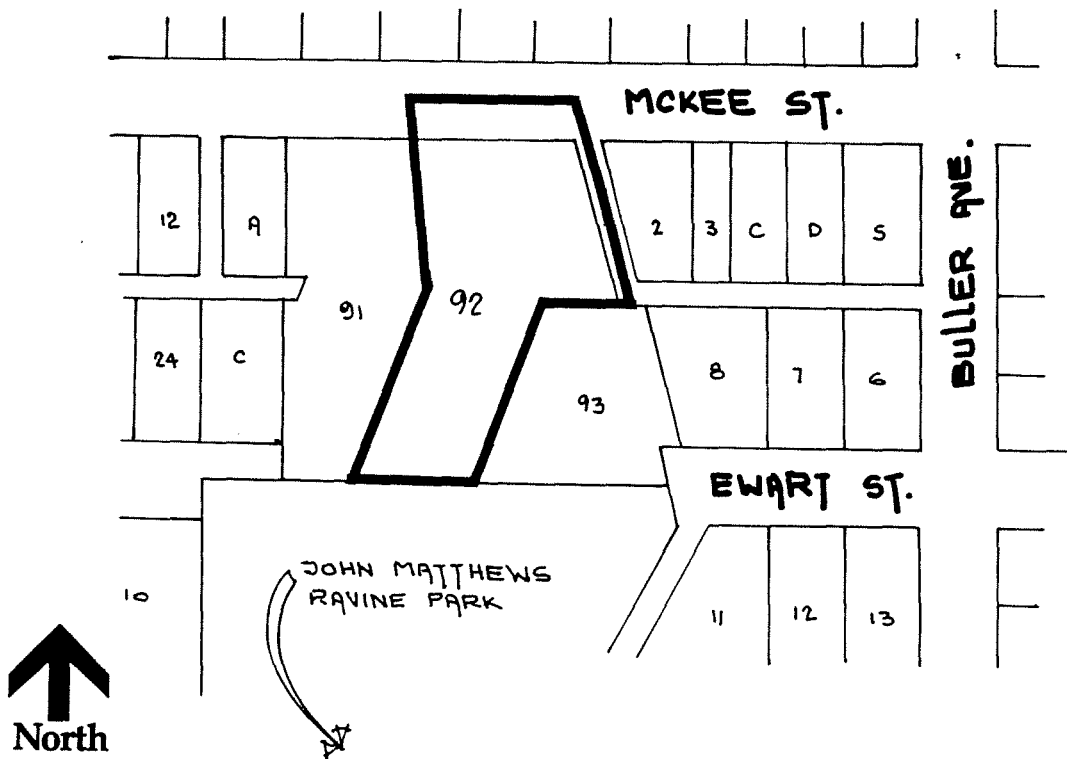
**BYLAW NUMBER 10248 BEING A BYLAW TO AMEND
BYLAW NUMBER 4742 BEING THE BURNABY ZONING BYLAW 1965**

PROPERTY REZONED TO:

P3 PARK & PUBLIC USE DISTRICT

LEGAL: LOT 92, D.L. 159, GROUP 1, NWD PLAN 37970

MAP "B"



**THE AREA(S) SHOWN
ABOVE OUTLINED
IN BLACK (—) IS (ARE) REZONED:**

FROM: R2 RESIDENTIAL DISTRICT

TO: P3 PARK & PUBLIC USE DISTRICT

**PLANNING
DEPARTMENT**

SCALE 1:2000

DRAWN J.P.C.

DATE JUNE 1995



City of
Burnaby

OFFICIAL ZONING MAP

No. RZ 2092

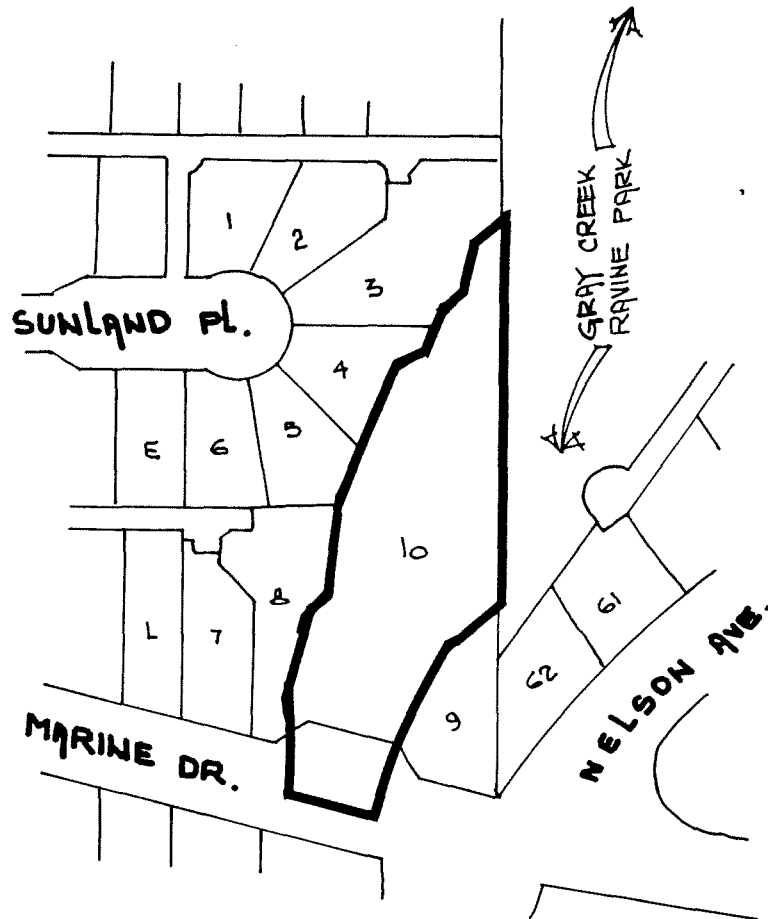
**BYLAW NUMBER 10248 BEING A BYLAW TO AMEND
BYLAW NUMBER 4742 BEING THE BURNABY ZONING BYLAW 1965**

PROPERTY REZONED TO:

P3 PARK & PUBLIC USE DISTRICT

LEGAL: LOT 10, D.L. 157, GROUP 1, NWD PLAN 80162

MAP "B"



**THE AREA(S) SHOWN
ABOVE OUTLINED
IN BLACK (——) IS (ARE) REZONED:**

FROM: R2 RESIDENTIAL DISTRICT

TO: P3 PARK & PUBLIC USE DISTRICT

**PLANNING
DEPARTMENT**

SCALE 1:2000

DRAWN J.P.C.

DATE JUNE 1995



City of
Burnaby

OFFICIAL ZONING MAP

No. RZ 2092

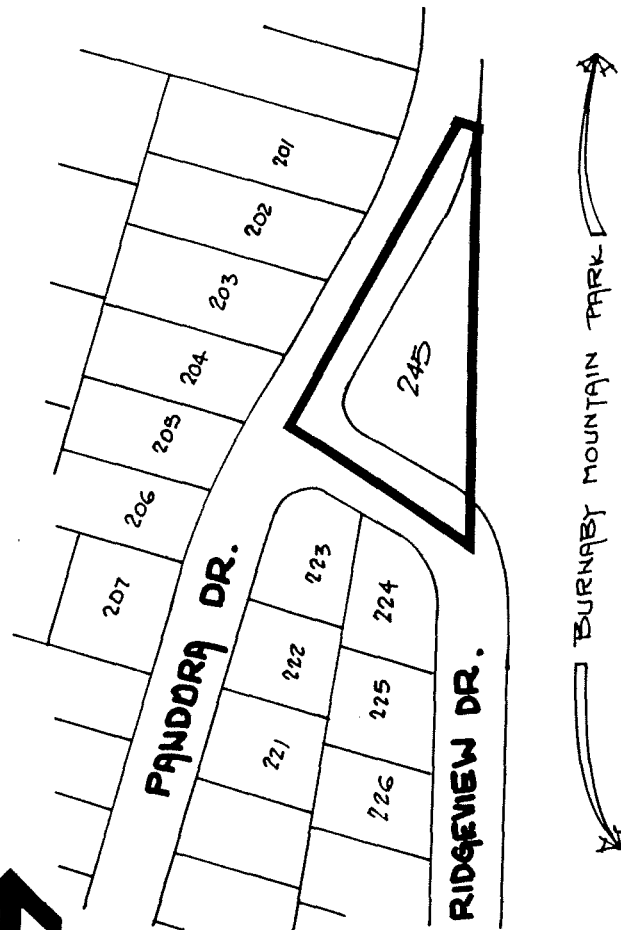
**BYLAW NUMBER 10248 BEING A BYLAW TO AMEND
BYLAW NUMBER 4742 BEING THE BURNABY ZONING BYLAW 1965**

PROPERTY REZONED TO:

P3 PARK & PUBLIC USE DISTRICT

LEGAL: LOT 245, D.L. 215 & 216, GROUP 1, NWD PLAN 62613

MAP "B"



THE AREA(S) SHOWN
ABOVE OUTLINED
IN BLACK (—) IS (ARE) REZONED:



FROM: R2 RESIDENTIAL DISTRICT

TO: P3 PARK & PUBLIC USE DISTRICT

PLANNING DEPARTMENT	
SCALE	1:2000
DRAWN	J.P.C.
DATE	JUNE 1995



OFFICIAL ZONING MAP

No. RZ 2092

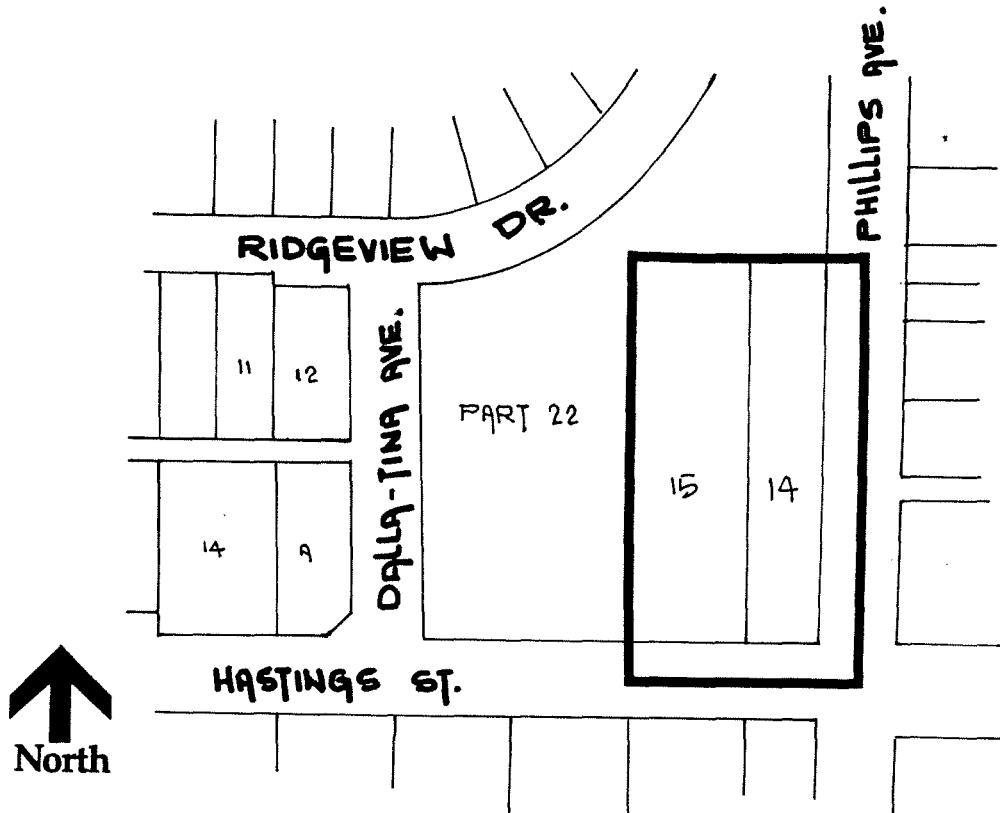
BYLAW NUMBER 10248 BEING A BYLAW TO AMEND BYLAW NUMBER 4742 BEING THE BURNABY ZONING BYLAW 1965

PROPERTY REZONED TO:

P3 PARK & PUBLIC USE DISTRICT

LEGAL: LOTS 14 & 15, BLOCK 3, D.L. 207, GROUP 1, NWD PLAN 4032

MAP "B"



THE AREA(S) SHOWN
ABOVE OUTLINED
IN BLACK (——) IS (ARE) REZONED:

FROM: R4 RESIDENTIAL DISTRICT

TO: P3 PARK & PUBLIC USE DISTRICT

PLANNING DEPARTMENT

SCALE 1:2000

DRAWN J.P.C.

DATE JUNE 1995



City of Burnaby

OFFICIAL ZONING MAP

No. RZ 2092

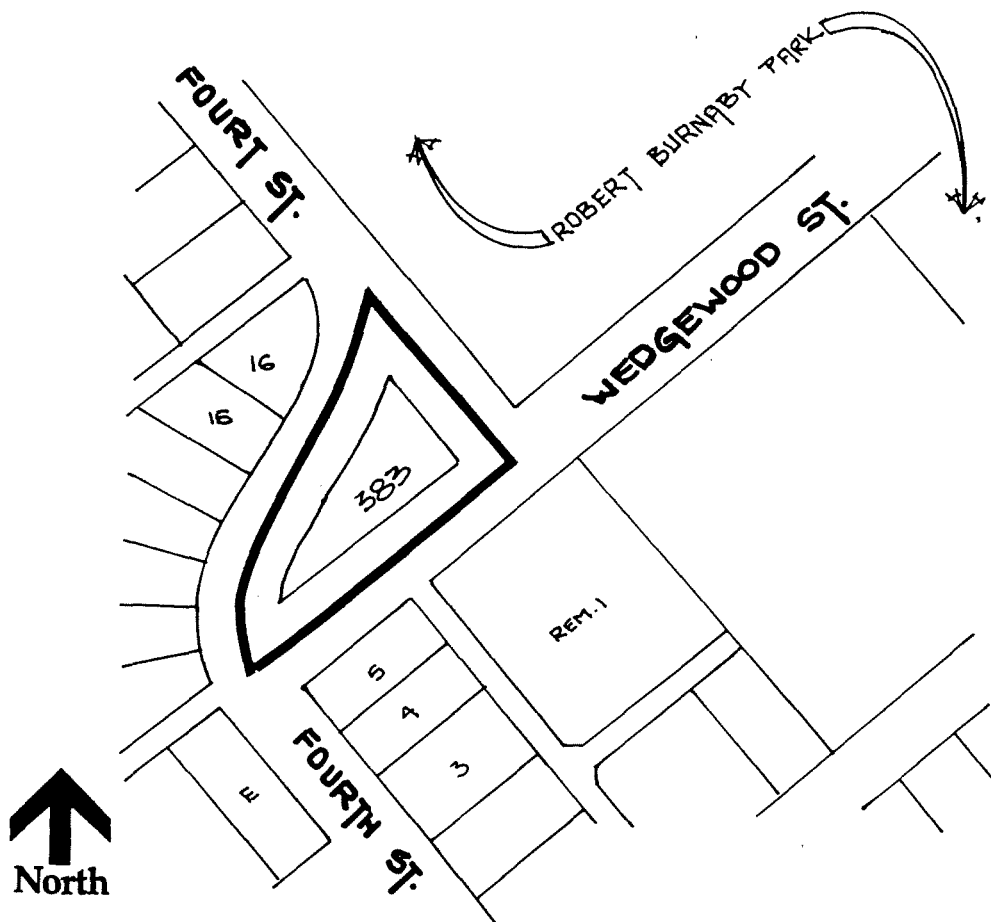
**BYLAW NUMBER 10248 BEING A BYLAW TO AMEND
BYLAW NUMBER 4742 BEING THE BURNABY ZONING BYLAW 1965**

PROPERTY REZONED TO:

P3 PARK & PUBLIC USE DISTRICT

LEGAL: LOT 383, D.L. 90, GROUP 1, NWD PLAN 66534

MAP "B"



**THE AREA(S) SHOWN
ABOVE OUTLINED
IN BLACK (———)
IS (ARE) REZONED:**

FROM: R5 RESIDENTIAL DISTRICT

TO: P3 PARK AND PUBLIC USE DISTRICT

**PLANNING
DEPARTMENT**

SCALE	1:2000
DRAWN	J.P.C.
DATE	JUNE 1995



City of
Burnaby

OFFICIAL ZONING MAP

No. RZ 2092

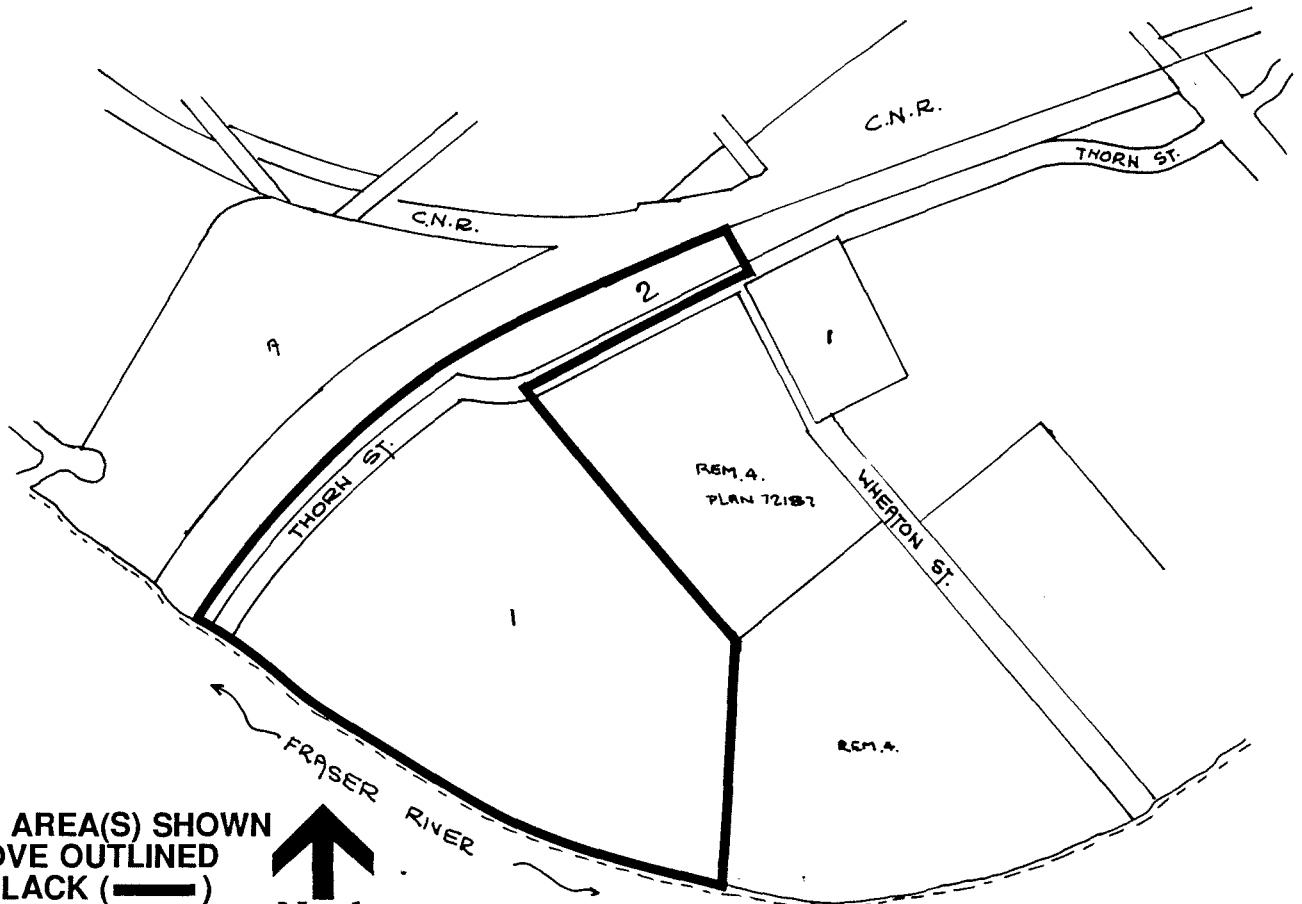
BYLAW NUMBER 10248 BEING A BYLAW TO AMEND BYLAW NUMBER 4742 BEING THE BURNABY ZONING BYLAW 1965

PROPERTY REZONED TO:


P3 PARK & PUBLIC USE DISTRICT

LEGAL: LOTS 1 & 2, D.L. 167, GROUP 1, NWD PLAN LMP 2259

MAP "B"



THE AREA(S) SHOWN
ABOVE OUTLINED
IN BLACK (—) IS (ARE) REZONED:


 North

FROM: CD COMPREHENSIVE DEVELOPMENT DISTRICT

TO: P3 PARK & PUBLIC USE DISTRICT

PLANNING DEPARTMENT

SCALE N.T.S.

DRAWN J.P.C.

DATE JUNE 1995



OFFICIAL ZONING MAP

No. RZ 2092

adapted on Jan 27/96

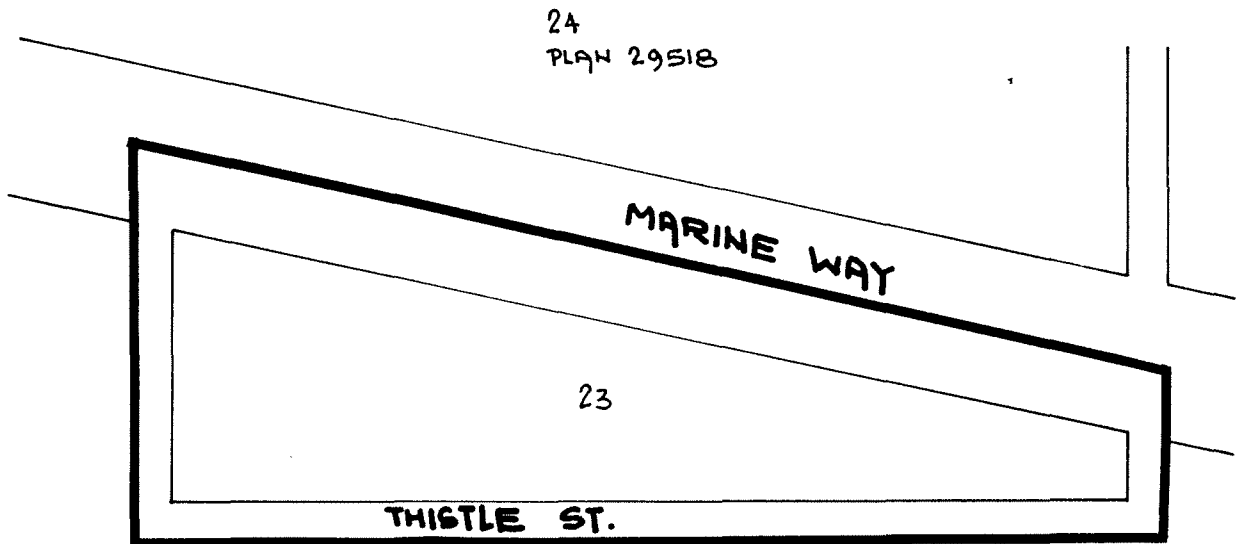
BYLAW NUMBER 10248 BEING A BYLAW TO AMEND BYLAW NUMBER 4742 BEING THE BURNABY ZONING BYLAW 1965

PROPERTY REZONED TO:

P3 PARK & PUBLIC USE DISTRICT

LEGAL: LOT 23, D.L. 164, NWD PLAN 28265

MAP "B"



THE AREA(S) SHOWN
ABOVE OUTLINED
IN BLACK (——) IS (ARE) REZONED:

FROM: P6 REGIONAL INSTITUTIONAL DISTRICT

TO: P3 PARK & PUBLIC USE DISTRICT

PLANNING
DEPARTMENT

SCALE 1:2000

DRAWN J.P.C.

DATE JUNE 1995



City of
Burnaby

OFFICIAL ZONING MAP

No. RZ 2092

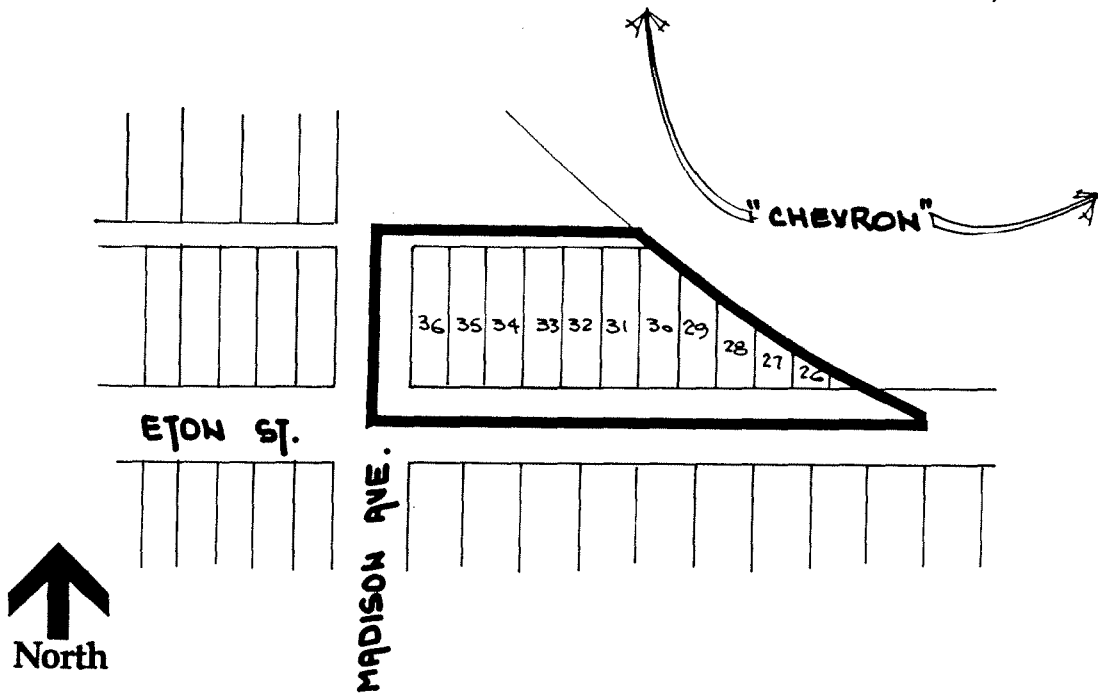
BYLAW NUMBER 10248 BEING A BYLAW TO AMEND BYLAW NUMBER 4742 BEING THE BURNABY ZONING BYLAW 1965

PROPERTY REZONED TO:

P3 PARK & PUBLIC USE DISTRICT

LEGAL: LOTS 25-36, BLK 27, D.L. 187, NWD PLAN 1282

MAP "B"



THE AREA(S) SHOWN
ABOVE OUTLINED
IN BLACK (———)
IS (ARE) REZONED:

FROM: M1 MANUFACTURING DISTRICT

TO: P3 PARK & PUBLIC USE DISTRICT

PLANNING DEPARTMENT	
SCALE	1:2000
DRAWN	J.P.C.
DATE	JULY 1995



City of Burnaby

OFFICIAL ZONING MAP

No. RZ 2092