

CITY OF BURNABY

BYLAW NO. 10093

A BYLAW to amend Bylaw No. 4742, being Burnaby Zoning Bylaw 1965, as amended by Bylaw No. 9470, being Burnaby Zoning Bylaw 1965, Amendment Bylaw No. 55, 1990

WHEREAS application for rezoning has been made to the Council;

AND WHEREAS the Council has held a public hearing thereon after duly giving notice of the hearing as prescribed by Sections 956 and 957 of the Municipal Act R.S.B.C. 1979;

NOW THEREFORE the Council of the City of Burnaby ENACTS as follows:

1. This Bylaw may be cited as BURNABY ZONING BYLAW 1965, AMENDMENT BYLAW NO. 35, 1994.
2. Bylaw No 4742, as amended by Bylaw No. 9470, is further amended as follows:
 - (a) The Map (hereinafter called "Map 'A'"), attached to and forming an integral part of Bylaw No. 4742, being "Burnaby Zoning Bylaw 1965", and designated as the Official Zoning Map of the City of Burnaby, is hereby amended according to the Map (hereinafter called "Map 'B'"), marginally numbered R.Z. 2045, annexed to this Bylaw, and in accordance with the explanatory legend, notations, references and boundaries designated, described, delimited and specified in particularity shown upon said Map 'B'; and the various boundaries and districts shown upon said Map 'B' respectively are an amendment of and in addition to the respective districts, designated and marked on said Map 'A' insofar as the same are changed, modified or varied thereby, and the said Map 'A' shall be deemed to be and is hereby declared to be

amended accordingly and the said Map 'B' is hereby declared to be and shall form an integral part of said Map 'A', as if originally incorporated therein and shall be interpreted accordingly.

(b) The Comprehensive Development Plan more particularly described in Bylaw No. 9470 is amended as may be necessary by the development plan entitled "BRIDGE CORPORATE CENTRE" prepared by JOHN HOLLIFIELD ARCHITECT and filed in the office of the Director Planning and Building; and any development on the lands rezoned by this Bylaw shall be in conformity with the said Comprehensive Development Plan as amended.

Read a first time this 8th day of AUGUST 1994

Read a second time this 6th day of SEPTEMBER 1994

Read a third time this 24th day of OCTOBER 1994

Received the approval of the Minister of Transportation and Highways

this 2nd day of FEBRUARY 1994

Reconsidered and adopted this 21st day of NOVEMBER 1994


MAYOR


CLERK

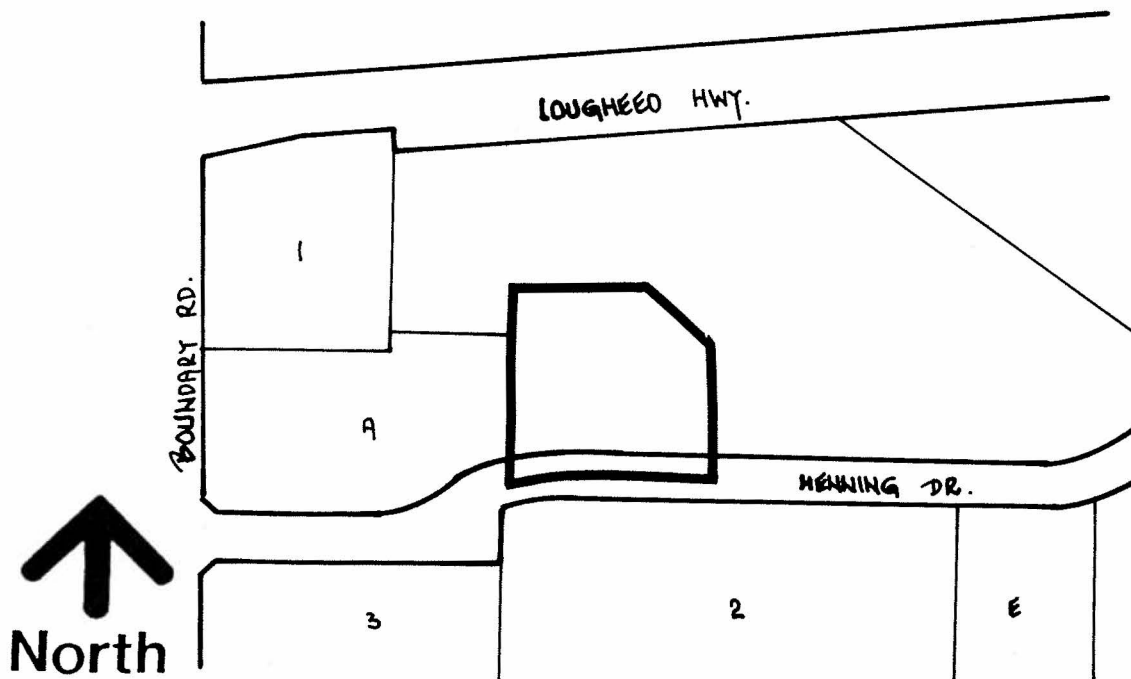
BYLAW NUMBER 10,093 BEING A BYLAW TO AMEND BYLAW NUMBER 4742 BEING THE BURNABY ZONING BYLAW 1965

PROPERTY REZONED TO:

"AMENDED" CD COMPREHENSIVE DEVELOPMENT DISTRICT (BASED ON M5 LIGHT INDUSTRIAL DISTRICT GUIDELINES AND IN ACCORDANCE WITH THE DEVELOPMENT PLAN ENTITLED "BRIDGE CORPORATE CENTRE" PREPARED BY JOHN HOLLIFIELD ARCHITECT)

LEGAL: PTN. LOT B, D.L. 118, GROUP 1, N.W.D. PLAN LMP2973

MAP "B"



**THE AREA(S) SHOWN
ABOVE OUTLINED
IN BLACK (———)
IS (ARE) REZONED:**

FROM: CD COMPREHENSIVE DEVELOPMENT DISTRICT (BASED ON M5 LIGHT INDUSTRIAL DISTRICT GUIDELINES)

TO: CD COMPREHENSIVE DEVELOPMENT DISTRICT (BASED ON M5 LIGHT INDUSTRIAL DISTRICT GUIDELINES AND IN ACCORDANCE WITH THE DEVELOPMENT PLAN ENTITLED "BRIDGE CORPORATE CENTRE" PREPARED BY JOHN HOLLIFIELD ARCHITECT)

**PLANNING
DEPARTMENT**

SCALE N.1/8.

DRAWN J.P.C.

DATE AUGUST 1994



City of
Burnaby

OFFICIAL ZONING MAP

No. RZ 2045