

THE CORPORATION OF THE DISTRICT OF BURNABY

BY-LAW NO. 1944

A BY-LAW to dedicate certain street allowances within the Municipality of Burnaby.

WHEREAS under the provisions of subsection 217 of Section 59 of the "Municipal Act" being Chapter 199 R.S.B.C. 1936, the Municipal Council is authorized to make by-laws for establishing, opening, making, preserving, improving, repairing, widening, altering, diverting or stopping up roads, streets, squares, alleys, lanes, bridges or other public thoroughfares;

AND WHEREAS it is desirable and expedient that certain lands should be dedicated for the purpose of street allowances in the Municipality of Burnaby;

AND WHEREAS the Corporation of the District of Burnaby is the owner of the hereinafter mentioned lands;

THEREFORE the Municipal Council of the Corporation of the District of Burnaby ENACTS as follows:

1. That the following parcels of land, all in Group One (1) New Westminster District, Province of British Columbia, shall be and are hereby dedicated for street purposes, that is to say:
 - (a) 0.142 of an acre part of Lots 4 and 45, Block 2 of South part of District Lot Twenty eight (28), Map No. 734 as shewn outlined red on sketch attached to and forming part of this By-law.
 - (b) Part 0.125 acres more or less of Lot Twenty (20) of Block Twenty (20), District Lot Twenty nine (29), Map No. 3035 as shewn outlined red on Sketch 9613.
 - (c) 0.125 of an acre part of District Lot Eighty five (85) as shewn on sketch on Certificate of Title No. 19606 E.
 - (d) East thirty three (33') feet of Block One hundred and nineteen (119), District Lot Ninety two (92), Map No. 1146
 - (e) South thirty three (33') feet of 4.31 acre part of Block Twenty-three (23) District Lot One hundred and fifty two (152), Map No. 3741 as shewn outlined red on sketch attached to and forming part of this By-law.
 - (f) West thirty three (33') feet of Blocks Eight (8) and Nine (9) of District Lot Seventy nine (79), Map No. 526.
 - (g) East thirty three (33') feet of Block Eighteen (18) District Lot Eighty three (83), Map No. 1267

(h) West thirty three (33') of Block Seventeen (17), District Lot Eighty three (83), Map No. 1267.

2. This By-law may be cited as "BURNABY STREET DEDICATION BY-LAW 1947."

DONE AND PASSED in Open Council on the Twenty Fourth (24th) day of February, A.D. 1947.

RECONSIDERED AND FINALLY PASSED this Twenty Eighth (28th) day of April, A.D. 1947.

Gatnorrison

REEVE

Charles B. Brown

CLERK.

CORPORATION OF THE DISTRICT OF BURNABY

PLAN OF A PORTION OF LOTS 4 AND 45
OF BLOCK 2, OF SOUTH PART OF LOT 28,
GROUP 1, NEW WESTMINSTER DISTRICT.

ACCORDING TO PLANS 274 AND 734, DEPOSITED
TO ACCOMPANY LANE DEDICATION BYLAW NUMBER

SCALE: - 1 INCH = 60 FEET.

BLOCK 1.

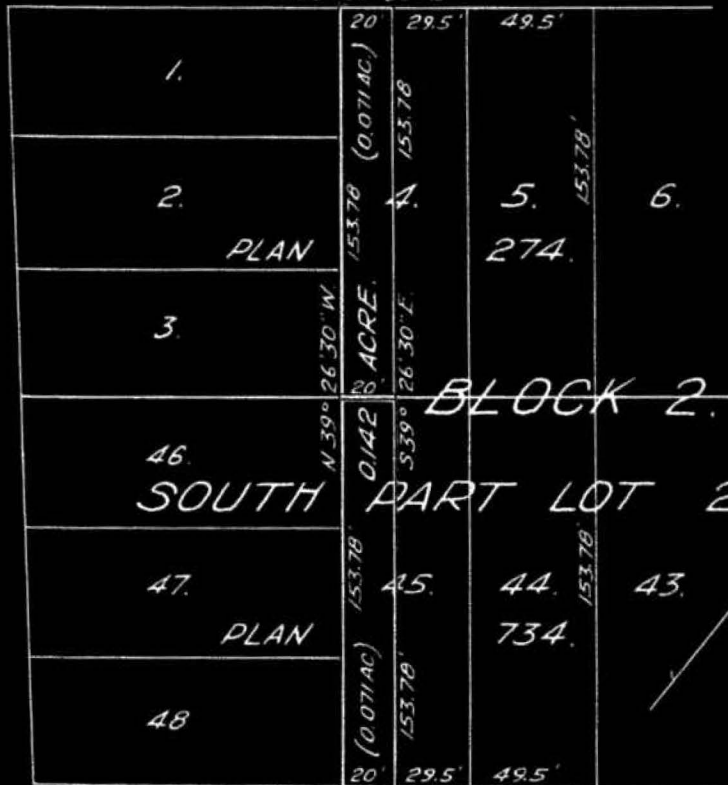
Deposited under Section 79
of the Land Registry Act
this day of 194

Registrar.

12TH AVENUE.

N 50° 33' 30" E

DOUGLAS ROAD.



BLOCK 2.

SOUTH PART LOT 28.

Bearings referred to the
Meridian of Plan 2620.

S 50° 33' 30" W.

11TH AVENUE.

BLOCK 3.

Certified correct according to
Plans 274 and 734, deposited
Dated this 6th day of
January, 1947.

Gustaf K. Burnett

B.C.L.S.

Burnett and McGowan,
Engineers & Surveyors,
New Westminster, B.C.

Corporation of the District of Burnaby

Reeve.

Clerk.

Approved under the Land Registry Act
Dated this day of January, 1947

Approving Officer.

AN OF A PORTION OF SOUTH 418 ACRE
 PORTION OF BLOCK 23, LOTS 152 & 153,
 DUPI, NEW WESTMINSTER DISTRICT.
 ACCORDING TO SKETCH 1639, DEPOSITED
 ACCOMPANY ROAD DEDICATION BY-LAW
 SCALE: - 1 INCH = 100 FEET



Deposited under Section 79
 of the Land Registry Act
 of 194 this day of
Registry

Legend -
 Bearings referred to Meridian of Plan 3962

Approved under the Land Registry Act
 Dated this day of 194

Approving Officer

CORPORATION OF THE DISTRICT OF BURNABY

Reeve

Clerk

B.C.E.R. PLAN 3962

Certified correct according to
 Land Registry Office Records
 Dated this 17th day
 of April, 1947.

John & McGowan
Surveyors
Westminster, B.C.

Bertie H. Bennett

B.C.L.S.