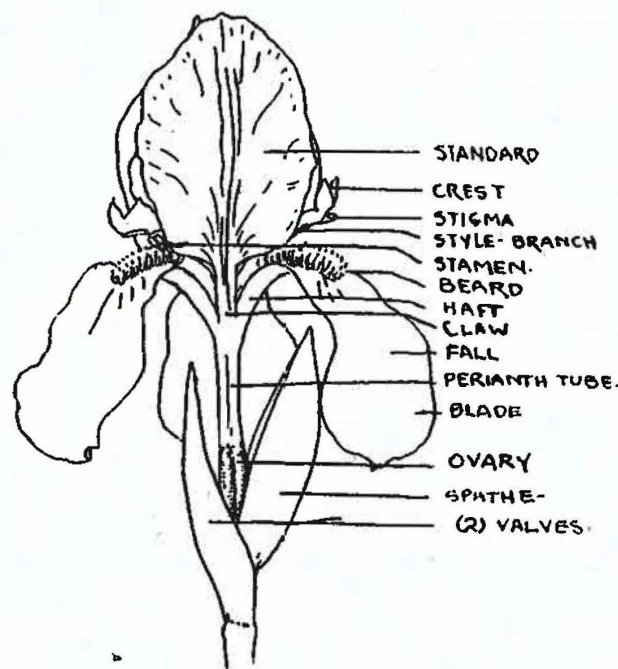


VRIS

1928-1929



## Rosedale Iris Gardens

3820 DOUGLAS ROAD  
BURNABY LAKE, B.C.  
CANADA

Telephone Carleton 821-R-3

Iris - - Russian Wolf Hounds

## INTRODUCTION

MAKE gardening your hobby for your health's sake. Make IRIS gardening your hobby for their alluring charm, and beauty that endures. Women of distinguished social and public position recognize in the IRIS an unusual opportunity to have something individual. In fact, modern good taste demands an IRIS garden. These rare creations give just that touch of individuality, distinction and novelty that commands the respect and admiration of others. Women who appreciate color and beauty in their homes are just as keen to have it in their gardens; and no matter how lovely your garden is now, IRIS will lift it above the commonplace and conventional, and give it an atmosphere of classic refinement.

It is impossible to buy IRIS blooms at your florist's. They are as yet novelties as cut blooms. But you may pluck them from your own garden next year if you plant them this year. Only three years ago were they first offered for sale by Rosedale Gardens. The response made by those who saw them has been more than gratifying. Garden lovers bought them for their own gardens. Then they invariably sent their friends to purchase some. Still others had orders reserved for Christmas, New Year, Easter, or Thanksgiving gifts. In this way it has been rather hard to build up any surplus of stock. However, the planting of new and improved varieties has gone merrily forward, so that some day I hope that I can arrange to have the supply equal the demand.

Sincerely yours,

ETHEL HUTCHINGS MOORE.



## The Romance of the Iris

**L**IKE the rose of "old England," the Iris is essentially a flower of romance. No doubt it existed in some form in the Garden of Eden. Various wild forms have been known to exist for centuries. Since 1900, new hybrids were obtained in France, England, Germany, and U. S. A., which created much interest; but it is only since the war, and I suppose, in spite of the war, that wonderful new colors have been obtained. It is now a flower of intrinsic value for every form of outdoor gardening. The name Iris itself, was given to this family of plants by the ancient Greeks, after IRIS, who appears in Greek mythology as the messenger from the Olympian gods to mortals on earth. She was personified in the rainbow. Thus the Iris itself was known as the rainbow flower. No flower was more aptly named, for it literally blooms in almost every imaginable color or combination of colors. The Iris was always a great favorite with the ancients, and almost always a symbol of royalty. An excavation, in Crete, I believe, some time before the Great War, revealed the tomb of the king, who wore a crown of intertwined Iris leaves and blossoms, and a pattern of Iris design was also discerned on the royal robes. The estimated period of his reign was one hundred years before Tutankhamen.

Later the lovely pale-Florentine Iris was used by the Moslem invaders of Europe to plant on the graves of their "happy warriors." But the Iris is essentially the symbol of chivalry. It conjures up visions of knights in armour, medieval castles, and beautiful maidens who had to be rescued from dire peril. It was the chosen flower of Louis VII. of France, who led the second crusades. After that it became known as the Fleur-de-Louis, later corrupted to fleur-de-lys. All the ancient French kings were represented with a sceptre crowned with an Iris flower, or perhaps the crown was a conventionalized Iris, and the robes were invariably embroidered in gold with the fleur-de-lys. The flower was a favorite of Queen Elizabeth. And so it went all down through the ages.

To-day it is the vogue in England and on the continent to have Iris gardens, in much the same way that rose gardens have always been used. To-day, the Iris is one of the real gems of the floral kingdom, for its good qualities, exquisite colours, classic form, hardiness, freedom from disease and insects, rapid self-propagation, and great ease of cultivation, have made it extremely popular wherever it is known.

### FORM

The Iris belongs to the botanical family Iridaceae, which contains not only Iris, but also crocus, gladiolus, Ixias, moutbretias, etc. These are all distinguished by a sword-like leaf. Ruskin says: "With a sword for its leaf and a lily for its heart."

The Iris family itself is subdivided into "bulbous" Iris (such as the English, Dutch and Spanish), and the rhizomatous. The rhizomatous Iris are also subdivided into different sections, the two most important being

the bearded Iris, with which this booklet deals, and those without beards, such as the gorgeous Japanese Iris and also the Siberian.

The bearded Iris is called the poor man's orchid. One looking at these glorious flowers for the first time would surely think they were greenhouse productions. Their delicacy of form and exquisite colours are just as attractive as the expensive orchid. From their cluster of sword-like leaves a stalk arises from one foot to as much as five feet in the newer varieties. An average height is about three to four feet. The stalk has from five to thirteen buds, which on opening may be almost any color. There are three petals which form a cup called the standards. Three other petals set alternately with the standards, flare downwards, and are called the falls. The falls are covered for about half the distance of the midrib with a golden beard, which helps to give the flower a luminous effect.

### COLOUR

The Iris colours are simply wonderful. They are literally every colour of the rainbow, from tints of pearl-like delicacy, intense brilliancy, to deep velvety richness, together with hundreds of different colour combinations, and blendings. Orange, coral, scarlets are not to be found yet, as one finds them in the gladiolus. The standards are often like a piece of shot taffeta silk. The falls resemble chiffon velvet in texture. The whole flower is covered with a refined crystalline lustre, such as one sometimes sees in the gladiolus or the dahlia petal, but never in the rose.

### FRAGRANCE

All Iris are fragrant, and the odor is never obtrusive, but essentially refined. Often one finds a resemblance to the odour of fruits, such as pineapple, melons, or an orange. Sometimes it is like a water lily. The Florentine Iris is the source of the well beloved orris root, which is really a ground Iris root.

### CULTURE

Iris culture is surprisingly simple.

Any good garden soil and a sunny well drained position, and shallow planting are all the essentials. If your soil is rich enough to grow a good potato, it is plainly good enough for Iris. However, the soil round about Vancouver is too light, and would be much improved by the addition of well-rotted manure. If the soil is sour, use a little lime—except with Japanese Iris. Here are a few don'ts:

Don't plant in the deep shade between houses, or among crowded shrubbery. They must have plenty of sunshine.

Don't plant bearded Iris in a wet spot, or where the drainage is not good. Japanese Iris do not mind it wet, and must be given plenty of moisture in June before they begin to flower.

Do not bury the rhizomes (the spongy root portion) in the soil. They must be barely covered with earth. The roots which spring from the rhizome, spread out just a few inches under the ground, and therefore



cultivation should be very shallow. In colder climates plant a little deeper, and give some winter protection. Here they need none.

Don't allow grass and weeds to grow in among the rhizomes. They will smother the Iris and use up all their food.

Divide the clumps about every three years, and you will have a surprising wealth of bloom.

Do not place the more delicate colors in front of a neutral color, such as stucco. These would be lovely and outstanding with a green background such as a hedge might provide.

By all means plant other lovely things with your Iris. There are beautiful flowering shrubs, such as lilac, mock orange, etc. Among the flowers are the lovely blue forget-me-nots, pink Oriental poppies, yellow day lilies, lupines in all their lovely new shades, peonies, delphiniums, madonna lilies, Shasta daisies, pyrethrums, and I think one of the sweetest things of all is the dainty long spurred columbine.

Do not worry about tent caterpillars, or pruning, when you plant Iris. It is not ever necessary to "watch and spray." It is not even necessary to water them during the dry season, unless the drought is prolonged. If the tips of the leaves dry up in the summer time, then they are needing water.

There is absolutely no flower that will give such splendid returns for such a small investment of time or money.

#### \*\*\*\*\* HOW TO ORDER

The best time to transplant Iris is either early spring or early fall. Therefore early orders are best, and are bound to be more satisfactory to both grower and customer. The ideal way to choose them, is to see them when they are blooming, that is, usually the greatest number of varieties can be seen blooming at once from about May 20th to June 10th. Japanese Iris begin to bloom about the middle of June. Those varieties which are chosen personally by my customers, during the blooming season, are mailed as soon after Sept. 1st as it is possible to fill the order, as, of course, orders are filled in rotation as received. These rhizomes should then become established before the frost comes to heave them from the ground. These Iris should give a bloom in the spring, but the flower will not be a representative bloom, and it would be better to pinch out the bud, and allow all the strength to go to the roots. If impossible to order for fall delivery, then put them in as early in the spring as possible, before growth starts.

No effort will be spared to give you satisfaction. Due care is exercised to keep stock of excellent quality and true to name.

The long cool growing season on the Pacific Coast grows the Iris rhizomes to perfection. Different varieties give different size rhizomes, so that quality cannot always be judged by size.

Please do not ask to have orders filled for less than \$1.00. Prices are quoted POSTPAID to any part of Canada. Orders \$10.00 or more are subject to 10% discount.

Substitutions will be made in the cheaper standard varieties if we are sold out. In the more expensive varieties, no substitutions will be made unless you distinctly ask us to do so.

One dozen of any one variety may be ordered for the price of ten.

We would also remind our customers who might desire to import Iris, that it is now necessary to obtain a permit from Ottawa. In B. C. this means quite a delay, to say nothing of the added expense, and loss of time, when the bulbs do arrive.

Our prices are practically the same as all other growers, and in many cases less, because they grow so rapidly here on the coast. Purchasers would do well to ask for bulbs and seeds grown in B. C., for none better can be obtained.

ROSEDALE IRIS GARDENS are situated at Burnaby Lake, on the Douglas Road, which runs from Hastings Street, Vancouver, to New Westminster. The Douglas Road joins Hastings Street not far past the Exhibition grounds. Burnaby Lake is also easily arrived at by coming from Vancouver, by Kingsway, and turning to the left on Edmonds Street at the Municipal Hall. Thence a few blocks to the Douglas Road. A turn to the left will bring you to Burnaby Lake, about two miles down the hill. Or a thirty-minute ride from Carrall Street depot on the Burnaby Lake car will bring you to Burnaby Lake station, then a five minute walk to corner Douglas and Sperling. The new Grandview Highway is perhaps the most satisfactory way at present. Just follow the Grandview Highway on to the Douglas Road and go about one mile south to Sperling Ave.

#### \*\*\*\*\* Standard Varieties of Bearded Iris

No one need have any hesitation in ordering any of these standard varieties. Many of them, such as Lord of June, were high priced novelties about five years ago, but have proved such vigorous growers, and are so popular, that they can now be offered at a very reasonable price. Stocks are in many cases still quite limited, so that if you have any particular color scheme in mind, you should send in your order early. Where possible, the American Iris Society ratings are given. So far no Iris has been awarded 100, but Mohr's Purissima is rated at 96. Any Iris that is rated 85 to 90 is usually exceptionally fine. The following descriptions are necessarily very brief.

S. refers to the three upright petals, called Standards.

F. refers to the drooping petals, called Falls.

A. W. Award of Merit. R. H. S. Royal Horticultural Society.

AFTERGLOW (83)—Misty lavender, lit with yellow at the centre \$ .50  
ALBERT VICTOR (79)—A tall lovely soft blue .30



ALCAZAR (89)—S. mauve. F. dark purple. Large and vigorous	.50
ARCHEVEQUE (83)—Deep purple violet	.35
AMBIGU (83)—S. smoky red. F. red purple	.40
BLACK PRINCE (78)—Velvety black purple	.25
BEAUTY—Soft lavender blue	.25
BLUE BIRD—Medium sized. Rich blue with a butterfly effect	.75
BLUE LAGOON—S. pale blue. F. dark blue	.75
BLUE JAY (71)—Intense blue. Thrifty grower	.25
BRIDESMAID—White	.25
CANARY BIRD—Soft yellow	.25
CAPRICE (75)—Rosy purplish red. Attractive	.35
CELESTE—Pale azure blue	.25
CHERUBIM—Pale heliotrope with rosy markings	.25
CATERINA (89)—Large soft lavender blue	.35
CHESTER J. HUNT (69)—A lovely blue. A great favorite	.35
CLEMATIS (78)—Pale violet, both the falls and the horizontally held standards veined darker at the haft. Distinctive when the standards open flat, forming a clematis-shaped flower	.40
CORDELIA—Early purple tinged red	.25
CORDON BLUE (77)—A satiny deep blue	.35
CORRIDA (83)—A fresh, clear, violet blue	.50
CRETONNE (84)—Exceptional deep rich, clear coloring. Deep velvety violet carmine, lit up with an orange beard, and yellow styles	.50
COTTAGE MAID—In blue and white	.25
DAWN (78)—Sulphur yellow, veined bronze	.35
DALILA (80)—S. ivory. F. rich red purple	.40
DEJAZET (83)—S. bronze rose. F. violet red, lit with yellow	.50
DIMITY (70)—A medium sized flower of crystal white, with ruffled standards faintly flushed and pencilled lavender	.35
DORMAN (79)—Vivid red violet	.75
DRAKE (79)—A light satiny violet blue	.75
DORA LONGDON (78)—S. buff pink. F. rose purple	.35
DR. BERNICE (74)—S. coppery bronze. F. velvety crimson	.35
DUSKY MAID—S. fawn. F. purplish red	.50
E. H. JENKINS—S. palest steel blue. F. deeper	.50
ELDORADO (78)—S. yellow bronze. F. violet with yellow tones	.35
EMPIRE—A clear rich yellow	.40
FLORENTINE—Pale blue fading to white. Early	.25
FRO—S. yellow. F. brown	.25
GAGUS—S. yellow. F. mahogany	.25

GLOW—A sister of Afterglow. A deeper yellow	.35
GOLD CREST (75)—A very lovely blue, with a bright golden beard	.50
GULES (71)—S. pale pink violet. F. red violet	.50
HADYN—S. pink. F. rose	.35
HALO (88)—Beautiful blendings of lavender and verberna violet	.75
HER MAJESTY (73)—S. rosy pink. F. heavily marked deep rose	.35
HIAWATHA (74)—S. pale lavender. F. purple	.30
ISOLINE (86)—S. silvery lilac pink. F. old rose and gold	.40
IRIS KING (79)—S. old gold. F. rich red with gold margin	.35
JACQUISANNA (80)—S. coppery crimson. F. deep red	.30
JUNIATA—A tall clear blue	.35
KATHLEEN—Pale lavender	.35
LANCELOT—Tall rosy mauve. Lovely	.50
LEONE TRENANCE—S. pale lavender. F. deeper, heavily reticulated	.25
LEONIDAS—A tall lovely violet blue pallida	.35
LOHENGRIN (82)—Soft shade of cattelya-rose. A favorite	.35
LORD OF JUNE (91)—Tall massive flowers of pale lavender blue, with falls a deep aniline blue	.75
LORELY (79)—S. amber. F. marine blue, cream border	.25
MADAME CHEREAU (74)—An old favorite. Crystal white with a picotee edge in blue	.25
MARGARET MOOR—Tall, beautifully blended rosy lilac	.50
MECELLA—S. silvery rose blue. F. light rosy purple	.50
MERLIN (83)—A massive bloom in pink violet tones	.50
MISS WILMOTT (76)—A fine tall white flushed lavender	.50
MRS. ALAN GREY (76)—Another favorite in lavender pink. Blooms again in August	.25
MRS. COWLEY (78)—S. russet bronze. F. rich violet carmine with a border of russet	.35
MRS. NEUBRONNER—A bright yellow	.25
MRS. TINLEY—Huge blooms of a lovely blue. Highly recommended	.75
MT. PENN (82)—S. lavender rose. F. crimson lilac. Lovely	.60
NAUSHON—A free flowering mauve and pansy violet	.50
NUEE D'ORAGE (Storm Cloud) (76)—S. fawn. F. heliotrope, frilled	.35
ORIFLAME (78)—Immense flowers of light blue and purple	.50
OPORTO (79)—Rich purplish mauve, heavy orange beard	.35
PFAUENAGE—S. olive gold. F. plum color with a wide gold border	.35



PERFECTION (78)—S. pale lavender. F. deep violet	.35
PORCELAIN—S. silvery mauve. F. deeper	.50
PROSPER LAUGIER (83)—S. pale bronze. F. deep velvety red	.35
QUAKER LADY (84)—S. dull lavender. F. blue and gold. Fascinating	.30
QUEEN OF MAY (74)—Delicate pink lilac. Early	.25
RAFFET—S. delicate soft blue. F. lavender violet with brown markings	.75
RHEIN NIXE (84)—S. white. F. violet blue	.30
RHODA—Delicate clear blush pink and rosy mauve	.50
ROSEWAY—A fine tall vigorous rose	.50
ROSE UNIQUE—Medium size rose color	.25
STANDARD BEARER—A tall bright pinkish plum color	.35
SUDAN—S. bright yellow tinged green. F. red purple	.35
SUNSHINE—A new dwarf yellow	.25
THORBECKE—S. white. F. violet	.25
TROOST (84)—Deep rosy plum	.50
TOM TIT—A new bright violet dwarf Iris	.25
VIOLACEA GRANDIFLORA—A lovely tall violet	.30
WHITE QUEEN—Pure white	.35
WARRIOR—Heavy rich purple	.75
WHIM—There is a subtle charm in the creamy surface powdered with rose and lavender	.75
WYOMISSING—A delicate blend in cream and pink	.35
ZUA—A charming ruffled and crinkled flower in pale crystalline blue	.50

## More Recent Introductions

Every attempt is made to keep the varieties strictly up to date. The descriptions as given are, in many cases, taken from the Introducer's Catalogues. Many of these varieties have bloomed here during the past season and are a distinct advance either in color, texture, style or height. Those who are so fortunate as to have some of the good standard varieties in their garden, should now add some of these very beautiful novelties, which will in the course of time also become standard varieties.

AMBASSADEUR (94)—From Vilmoren, France. A regal flower with reddish violet standards and falls of velvety purple crimson. A.M. R.H.S. 1921	\$ .80
ALVARADO—(Mohr, 1926). Very tall with blooms of deep rich purple	2.50

APHRODITE—(Dykes, 1922). One of the most beautiful pinks. 40 in.	7.50
ANN PAGE—(Hort. 1919: A.M. R.H.S. 1920). Lovely pale blue self with large flowers of fine shape and texture. 36 in.	3.00
ARSACE (84)—(Millet, 1913). An iridescent pink lavender. Over 3 ft.	1.00
ARGENTINA—(Mohr, 1924). A fine new white with gold veined haft	5.00
ASIA (92)—(Yeld, 1920). One of the most outstanding new varieties. S. pale lavender suffused lavender at the base. F. pale reddish purple, lighter at the margins. Bright golden beard. 48 in.	3.00
AVALON (91)—(Miss Sturtevant). Pinkish lavender blossoms of great size and beautiful form. 4 ft. Silver Medal. M.H.S. 1916.	5.00
AZULADO—(Mohr, 1924). Huge flowers of lustrous pearl grey	5.00
BALBOA—(Mohr, 1923). A tall, bright, red-violet bicolor. 1st Class Cert. of Merit. M.H.S.	2.50
BALLERINE (94)—Vilmoren, France. Really exceptional. Over 4 ft. tall, with enormous flowers of light violet blue, deepening in the falls	1.50
BANDOLIERO—(Mohr, 1926). The flowers are a distinctive light blue, beautifully veined. 40 in.	2.50
BELLORIO (Mohr, 1924). A distinctive flower of mouse grey, not large, but well placed on 30 in. stems. Absolutely distinct in its soft subdued coloring	2.00
BELLADONNA or PERLADONNA (92)—(Perry, Eng.). "The general effect of this variety is very striking, stout, branching stems growing fully 3½ ft. high, bearing many medium sized flowers of great texture. The color is a pleasing shade of rich China blue"	2.00
BERNARD GALLAWAY—(Perry). "Extremely pretty, medium sized flowers. S. soft violet rose. F. bright rose lined purple	1.50
BRAVURA—(Mohr, 1926). Flowers of deep rosy lilac on stout stems	2.50
B. Y. MORRISON (88)—(Miss Sturtevant). Soft lavender, except for the velvety purple centre of the falls. 33 in.	1.00
CAMEO—(Miss Sturtevant, 1924). "Apricot and cream buff tints, the falls flushed with cameo pink"	1.00
CHATELET—(Vilmoren). Immense flowers of elegant rosy tone. S. pink and ageratum violet. F. violet, the whole overlaid with a rosy sheen. 2½ ft. A.M. R.H.S.	5.00
CHASSEUR—(Vilmoren, 1923). Immense sweetly scented flowers of deep yellow, fading lighter	2.00
CLARIDAD—(Mohr, 1926). A beautiful clear blue of medium size	2.50



<b>CLEMENT DESORMES</b> —(Denis). Large showy flowers. A bright pink	2.00
<b>CLUNY</b> (86)—(Vilmoren). S. a lovely shade of pale lilac blue. F. are a deeper blue. A magnificent, tall Iris, with large flowers	.75
<b>COL. CANDELOT</b> (80)—(Millet). Medium sized flowers of an unusual red. S. bronze overlaid reddish lavender. F. dark, rich crimson	.75
<b>CONQUISTADOR</b> —(Mohr, 1923). In California this variety grows to 5 ft. A fine vigorous outstanding plant with deep mauve to light violet flowers	2.50
<b>CORONADO</b> —(Mohr, 1925). S. lavender. F. red purple, paling to lavender margins. Beard and style arms golden	3.00
<b>CRIMSON GLOW</b> —(Perry, 1925). "An extremely beautiful variety. Large, handsome well-shaped flowers, of a uniform shade of brilliant, crimson rose. S. frilled, incurved. F. exceptionally broad"	7.50
<b>CRUSADER</b> (87)—(Foster, 1913). Fine large flowers of clear violet blue	.75
<b>DELICATISSIMA</b> (82)—(Millet). Heavy flowers of lavender, deepening to light purple in the falls	.75
<b>DOMINION</b> (94)—(Bliss, 1917). A wonderful Iris in a class by itself. S. light bluish violet. F. of exceptional substance, expanding at the base to a deep rich velvety purple; slight veining at the throat; pronounced orange beard. Very broad blue green foliage. Apparently it does not bloom every year, and therefore is not as good a garden variety as it might be. Its greatest value lies in the fact that it has given some wonderful seedlings, e. g., Bruno, Cardinal, Duke of Bedford, etc. A.M. R.H.S.	5.00
<b>DREAM</b> —(Miss Sturtevant, 1923). A very lovely crinkled rose pink	1.00
<b>DULCINEA</b> —(Mohr, 1925). S. lavender. F. violet blue with lavender margins and beautiful pearly lustre	2.50
<b>DUKE OF YORK</b> —(Perry, 1923). "This beautiful Iris has stout branching stems, bearing many gigantic flowers of perfect shape and texture, well over 4 ft. high; standards measuring 2 3/4 in. across, soft mauve blue faintly tinged bronze. F. soft mauve blue conspicuously illuminated with a bold orange beard"	2.50
<b>E. A. BOWLES</b> —(Perry, 1923). A beautiful late flowering variety. Stout branching stems bearing a profusion of large, well-formed flowers. S. broad and incurved, a delightful shade of rich soft blue. F. broad, bright crimson purple	1.50
<b>EDEN PHILPOTS</b> —(Perry, 1921). "A very beautiful Iris, and one of the most striking varieties yet produced. Its gigantic flowers are produced in the wildest profusion, quite early in the season. Large, well-shaped flowers, a uniform shade of dark, lavender blue, relieved by a bold white and yellow beard"	1.00

<b>EL CAPITAN</b> (95)—(Mohr, 1926). Given an Award of Merit at the University of California Iris Show in 1926. A wonderful blue lavender difficult to describe. Outstanding	7.50
<b>ECKESACHS</b> —S. soft sky blue. F. bright rosy purple	1.00
<b>ELINOR BLOSSOM</b> —(Miss Sturtevant, 1924). A full ruffled flower, very brilliant with its smooth lilac and amethyst-violet tones touched with yellow at the throat	1.00
<b>EMIR</b> (77)—A lovely blue	.75
<b>ESPLENDIDO</b> —(Mohr, 1924). A striking, big purple bicolor, 40 in.	3.00
<b>ETOILE DE MATIN</b> —(Vilomen, 1926). Very fine	7.50
<b>FEDORA</b> —(Cayeux). S. old gold. F. red violet	2.50
<b>FRA ANGELICO</b> —(Vilmoren, 1926). Very new	7.50
<b>FUERSTIN LONLAY</b> —(Goos and Koenemann, Germany, 1920). Exceedingly floriferous. S. violet. F. wine red with white throat	1.50
<b>GAVIOTA</b> —(Mohr, 1924). An unusual plicata of creamy white edged yellow	1.50
<b>GABRIEL</b> —(Bliss, 1923). The tallest of the Dominion race, with enormous flowers of steel blue and light violet. 4 ft.	12.50
<b>GLADYS ROBERTS</b> —(Perry, 1921). S. broad and expanded, bright rose mauve lined purple. F. light rosy violet, white reticulated base, orange beard	1.50
<b>HAKADOR</b> —(Perry). Narrow pendant foliage; thin wiry stems over 4 ft. high, bearing 15 to 18 medium sized flowers, almost a uniform shade of pale rosy plum. Beard white	1.50
<b>HERMIONE</b> (88)—(Hort.). A fine large flower. S. bright blue purple. F. red purple	2.00
<b>HIDALGO</b> —(Mohr, 1925). A very large lavender self, of unusually broad shape, tall and outstanding	3.50
<b>HISAN</b> —S. pale mauve pink. F. wine red with white centre	.75
<b>IMPERATOR</b> —(Cayeux, 1923). Color and markings similar to Opera, but better every way	1.50
<b>J. B. DUMAS</b> —(Denis, 1917). S. pink. F. deeper, with a creamy centre and a golden beard	2.00
<b>J. J. DEAN</b> —(Dean). S. light violet. F. velvety purple	.75
<b>JEAN CHEVREAU</b> —(Cayeux, 1923). Large flowers of great texture. S. cream tinted buff yellow. F. white, stippled at the throat, and around the divisions with brown violet	2.00
<b>JULIA MARLOWE</b> —S. Chinese violet. F. raisin purple. A tall, stately and beautiful flower	3.50
<b>KULAN TITH</b> —Large incurved standards of rich sky blue. F. a delightful soft lavender blue	1.50
<b>LADY BYNG</b> —(Bliss). A great beauty. The color throughout is a delicate clear lavender, slightly suffused rose	2.50



<b>LADY CHAS. ALLOM</b> —(Perry). "One of the most beautiful of my new varieties, and one that will stand the test of time. Rigid stems bearing large perfect flowers of great texture. S. rich blue. F. darker. Bold yellow beard"	2.00
<b>LADY LOU</b> —(Dean). A tall, very early lavender	.75
<b>LADY FOSTER</b> (85)—(Foster). One of the loveliest blooms I have ever seen, but it will not bloom here every year. S. pale blue. F. light violet blue, veined old gold	.75
<b>LA NEIGE</b> —(Verdier, 1912). A very popular white	.50
<b>LENT A. WILLIAMSON</b> (90)—(Williamson). For many years the finest American variety. S. bright lobelia blue; F. rich velvety purple, lit with old gold at the base of the petals. Rich	.75
<b>LEONATO</b> —(Hort, 1922). Described as a greatly improved Lady Foster, and said to be the finest of all bicolors. S. pale lavender shading to heliotrope. F. slightly darker tone, widely expanded. Measures over 6 in.	7.50
<b>LEVERRIER</b> (91)—Blendings of Chinese and Pansy violet. 42 in. tall, with long drooping falls	1.50
<b>LORD LAMBOURNE</b> —A Perry seedling that is most distinct in color. S. are fawn rose suffused bronze. The falls are rich madder crimson	5.00
<b>LUCIDA</b> —Introduced by Mr. Carl Salbach. A lovely large lavender of the Lady Foster type, but larger and more vigorous	1.00
<b>LUNA</b> —Large well-formed flowers on tall branching stems. S. a pretty shade of wistaria blue. F. rosy lavender. White beard surrounded by a white halo	.75
<b>MAGNIFICA</b> (91)—(Vilmoren, A.M. Societe Nationale d'Horticulture, France). S. clear violet blue. F. very long red violet	1.00
<b>MARIPOSA</b> —(Mohr, 1923). Pale porcelain, flaked red purple. Late	.75
<b>MAY MORV</b> —Softest yellow flushed with pink	.75
<b>MEDRANO</b> (83)—(Vilmoren, 1920). Deep velvety rose purple	.75
<b>MEMORY</b> —(Yeld). Pale mauve and gold	1.00
<b>MIDLE. SCHWARTZ</b> (87)—(Denis). Pale lustrous mauve on tall strong stems. A great favorite with those who love the soft pastel tones	2.00
<b>MDME. CHERI</b> (84)—(Miss Sturtevant, 1918). Another flower of the most subtle blending of pastel shades. Ageratum violet washed pink with an undertone of ivory and amber, and a golden beard	1.00
<b>MDME. CHOBOUT</b> (85)—(Denis, 1926). Altogether unique. A lovely piccata, its yellow ground flushed red and veined brown, suggesting apricot tints. 32 in.	.75

<b>MDME. DURRAND</b> (86)—(Denis, 1921). Iridescent buff, flushed with lilac and amber. The stalk is over four feet tall, with 12 or more 6 in. flowers to the stalk. The French and English give this lovely flower a rating of 93, but it is not a favorite with every one on account of the color, the general effect of which is fawn	3.00
<b>MRS. CHAS. PEARSON</b> —(Perry). Dainty and graceful. S. delicate mauve. F. rosy mauve, with a bold white blotch half way down the fall, and a white beard	2.00
<b>MRS. E. T. VIEUSSEUX</b> —(Perry). One of the finest dark colored varieties. S. bright crimson purple. F. purple black	2.00
<b>MRS. J. STERN</b> —(Perry). An extremely pretty early flowering variety, with slender spikes of medium sized flowers. S. light rose. F. brilliant rose	.75
<b>MRS. H. F. BOWLES</b> —(Perry). S. a most brilliant shade of soft brown, overlaid old gold. F. a glorious shade of brick red, glistening in the sun like a piece of silk	5.00
<b>MRS. WALTER BREWSTER</b> —(Vilmoren, 1923). Large and floriferous. S. lavender blue. F. aniline blue. A prize winner from Paris	1.00
<b>MRS. HUBERT</b> —(Denis). Tall and handsome. S. Parma violet passing to bronze. F. rich marine blue with maroon veins on an amber ground. 3 ft.	2.00
<b>MONS. PERTHUIS</b> —(Millet, 1920). Vigorous, well built flowers. S. lavender blue. F. campanula violet	2.00
<b>MORNING SPLENDOR</b> —(Shull, 1922). A large flower in extremely rich deep purple tones, with a red tinge	4.50
<b>MOTHER OF PEARL</b> —(Miss Sturtevant, 1921). A beautiful friz, well named, as the color is an iridescent pearl	1.00
<b>NANCY ORNE</b> (82)—(Sturtevant, 1921). A beautiful rose and gold blend	.75
<b>NEPTUNE</b> (81)—(Yeld). A.M. R.H.S. A tall lovely flower, something like Lord of June. S. pale blue. F. deeper	.75
<b>OLIVE MURREL</b> —(Perry). "A magnificent tall growing variety of unusual coloring, which might be described as a greatly improved Quaker Lady. The large and finely arched standards are deep lavender rose shot with bronze. The falls are rich lavender blue shot with rose and bronze. The rich buttercup yellow of the beard and style arms lights up the whole flower in a most attractive manner. Very sweetly scented"	7.50
<b>OPERA</b> (87)—Vilmorin, 1916. S. violet rose. F. intense velvety red violet. Reverse of falls are creamy. 33 in.	.75
<b>PANDORA</b> —(Miss Sturtevant, 1922). A large delicate pink flower. 2 ft.	1.00
<b>PELOPIDAS</b> —S. old rose. F. a rich crimson with rose flushed edge	1.00



<i>PHYLLIS BLISS</i> (89) — (Bliss, 1919). Almost a shell pink throughout, shaded rosy lavender. Very charming	1.50
<i>PORSENNA</i> —(Yeld). S. old gold shaded lavender. F. crimson purple, with a lighter margin	.50
<i>PRINCESS BEATRICE</i> (95)—A selected form of <i>Pallida Delmatica</i> . Cool, clear satiny lavender	.75
<i>PRINCE LOHENGRIN</i> —An improved <i>Lehongrin</i> . A light orchid pink shading to cream at the centre. Golden beard	1.00
<i>PROSPERO</i> —(Yeld). A.M. R.H.S. A fine tall variety. S. bronzy lavender. F. deep violet purple	.75
<i>PRIMAVERA</i> —(Mohr). The rather short, sturdy stems bear many flowers of pale honey yellow, deepening in tone at the centre	1.00
<i>QUEEN CATERINA</i> (91)—(Miss Sturtevant). A large and lovely iridescent pale lavender violet	1.00
<i>RAMELDO</i> —(Mohr, 1925). A cross between <i>Ramona</i> and <i>Eldorado</i> , but taller and darker than either. Heliotrope and gold	2.50
<i>RAMONA</i> —(Mohr, 1924). A new blend of colors, petunia violet overlaid cinnamon brown, lightened by an orange beard	1.50
<i>RITA</i> —(Mohr, 1924). A blue purple of large size on splendid stems branching almost from the ground	1.00
<i>ROSADO</i> —(Mohr, 1925). "This beautiful, clear soft pink, tall, strong growing and of unusual size, is literally in a class by itself"	7.50
<i>SARABANDE</i> (70)—(Miss Sturtevant, 1918). S. cream washed pink. F. velvety blue purple with a fawn border. Very pleasing	.75
<i>SAN GABRIEL</i> —(Dean, 1921). A very large, pinkish lavender of high excellence. Early	2.50
<i>SARSANDRA</i> —Rosy mauve and brilliant crimson	.75
<i>SANTA BARBARA</i> —(Mohr, 1925). "This is one of the finest pure lavender blues we have ever seen. Its color, size and spreading horizontal falls make it an outstanding flower"	7.50
<i>SEMINOLE</i> (83)—A brilliant light red, with a purple tingle	.75
<i>SPLENDOUR</i> —(Miss Sturtevant). A ruffled red purple	.75
<i>SOUVENIR DE MADAME GAUDICHAU</i> (93)—(Millet, 1914). Another very popular variety. A very deep velvety violet. Large and brilliant	1.00
<i>SOUVENIR DE LOETTITIA MICAHUD</i> —(Millet, 1923). Considered to be the finest of the recent French introductions. The strong stems grow about four feet high, bearing enormous flowers of a fine texture. S. a lobelia blue shading towards the edge to pale blue. F. same color, beautifully veined yellow on a white haft	4.00
<i>SUSAN BLISS</i> —(Bliss, 1922). "In the border the flowers appear in certain lights, to be a uniform shade of deep rose pink. The	

light orange beard adds a pleasing color tone. Tall and robust. 3½ ft.	1.00
<i>SWEET LAVENDER</i> (85)—(Bliss, 1922). A distinctive form, producing strong spikes, branching from the base, as many as twelve or more flowers blooming at once. S. pale lavender. F. horizontal, very broad, widely expanded, and of a deep rose lavender. 3½ ft.	1.50
<i>VALERY MAYET</i> (85)—(Denis, 1912). Unusual. S. copper rose. F. deep red brown	.75
<i>VALENCIA</i> —(Mohr, 1926). A dwarf, orange buff self. A new and striking color	2.00
<i>W. C. TERRY</i> —(Perry). A grand Iris of the <i>Trojana</i> type. Towering branching stems nearly 5 ft. high, smothered with large brilliant flowers. S. light violet. F. bright crimson purple	2.00

.....

THESE VERY FINE NOVELTIES NOT ALREADY LISTED WILL BE READY FOR DISTRIBUTION IN 1929. They are the last word in the Iris world, and will be, of course, high priced for a few years. A short resume is here given of the more famous contemporary hybridizers, and their latest introductions.

A. J. Bliss of England introduced *DOMINION* in 1917. At that time it was a wonderful new Iris with S. of a light blue violet, and F. a very deep velvety purple. As a garden variety it was not ideal, on account of the scarcity of the blooms. However it proved to be a wonderful parent plant, and Mr. Bliss has introduced several exceptionally fine new seedlings from *DOMINION*—e. g., *ZULU*, *BRUNO*, *DUKE OF BEDFORD*, *CARDINAL*, *ROMOLA*, etc. Later he changed his parent plant to *BRUNO*. *BRUNO* is described as S. bronzy lavender, shading to amber at the base; F. a wonderful rich red purple, over 3 ft. tall. From *BRUNO* he has introduced *MRS. VALERIE WEST* and *GRACE STURTEVANT*. Both of these are rich crimson brown flowers of exceptional texture. Mr. Bliss has also introduced three delicately beautiful flowers of exceptional merit: *PHYLLIS BLISS*, a mauve; *LADY BYNG*, a mauve pink; and *SUSAN BLISS*, a lovely rose pink. His two latest introductions are *PIONEER*, a huge red purple, and *GABRIEL*, a fine vigorous blue.

MR. W. DYKES, a world famous authority on Iris. He introduced many beautiful varieties of various types. Perhaps his seven finest varieties are: *ARIADNE*, S. silver blue with wavy edges; F. a deeper blue. *APH. RODITE*, a famous rich, violet pink over 4 ft. *MOONLIGHT*, a large tall flower with amber yellow standards and dull yellow falls, shaded with green gold. It is said to be very lovely. *HARMONY*, 1923, a rich blue with a purple tingle. *WEDGEWOOD*, a deep blue with a white beard, very aptly named. *PEERLESS*, 1924, red violet standards, and deep red purple falls. *AMBER*, 1924, the finest new yellow except *W. R. DYKES*.

SIR ARTHUR HORT, another famous English hybridizer, has given us *ANNE BULLEN* in blue lavender and deep purple, tinged red. *ANN*



PAGE, a very lovely blue. HERMOINE, a handsome bi-color in red purple and blue purple. LEONATO, a famous huge, fragrant, flower of silvery lavender and heliotrope.

AMOS PERRY. Since 1920 he has introduced some very beautiful tall Iris. Perhaps the most meritorious are: MRS. MARION CRAN, a brilliant rose. OLIVE MURREL, S. deep lavender rose shot bronze; F. rich lavender blue. CRIMSON GLOW, crimson rose. LORD LAMBOURNE, rose fawn suffused pale bronze; F. rich madder crimson. DUKE OF YORK, a gigantic Pallida of soft mauve blue, orange beard. MRS. H. F. BOWLES, S. soft old rose; F. glistening bronzy crimson. It will probably be some time before these varieties are surpassed.

GEO. YELD. Some of the most popular Iris in the world have originated in Mr. Yeld's Yorkshire garden. NEPTUNE in lovely soft blue. ASIA, unlike anything else, and one of the very finest; and LORD OF JUNE, a poem in blue, whose vigorous growth has made it so reasonably priced in such a few years.

The most famous French hybridizers are M. Cayeux, M. Denis, M. Millet, and Vilmorin, Andrieux et Cie.

M. Cayeux has introduced, among others, the following very fine Iris: IMPERATOR, 1923, a gorgeous bloom, similar to, but an improvement on OPERA. JEAN CHEVREAU, an attractive ivory stippled on the margins with rust color. In 1924 came the lovely BELSAIRE, with its exquisite colorings resembling the famous ISOLINE. GLORIAE is a wonderful clear, true blue. MME. HENRI CAYEUX is a better and brighter AMBASSADEUR. SOLFERINO is said to almost surpass APHRODITE. It is a handsome red lilac pallida. SENSATION is a huge clear corn-flower blue of unsurpassed beauty. MARQUISETTE, 1926, a dainty Iris, very distinct in color; S. are palest grey shot with pink; F. are pale violet pink pencilled with a deeper pink. LABOR is a sensational new flower introduced in 1926. It is almost a self of a distinct violet heliotrope.

M. DENIS has introduced such outstanding Iris as: MME. SCHWARTZ, LEVERRIER, MD. DURRAND, MD. CHABAUT, etc. MONS. BRUN, 1920, is a blue purple with brown shadings; hence its name. MONS. MASSE has a 4 ft. stalk bearing lovely white flowers washed blue. AVRIL, said to be one of his finest creations, is violet purple. In 1925 came three new outstanding Ricardi whites — RENE DE LABORDE, MME. JEANNE BEL and MICHELLE CHARRAIRE—followed in 1926 by FLOREAL in lilac bronze, and violet, and LOUIS BEL, intense black pansy violet.

LIONEL MILLET, whose best known variety is SOUVENIR DE MADAME GAUDICHAU, has within the past few years given us three exquisitely beautiful Iris in delicate colors. SIMONNE VAISSIERE, S. azure blue; F. brilliant blue veined gold. MME. CECILE BOUSCANT, a lovely orchid pink with a flush of soft blue on the falls. SOUVENIR DE LOETITIA MICHAUD is a lobelia blue shading to a paler blue edge. YOLANDE is a magnificent rich blue. GERMAINE PERTUIS, enormous flowers of a superb violet purple.

VILMORIN, ANDRIEUX ET CIE in 1920 introduced such outstanding novelties as AMBASSADEUR, BATTERINE, MAGNIFICA, CLUNY. Their newer ones include such remarkable varieties as CHASSEUR, and in 1926 ORION, ANTARES, ETOILE DE MATIN, FRA ANGELICO, MRS. WALTER BREWSTER, VAN DYK, WATTEAU, etc.

In U. S. A. MISS STURTEVANT is perhaps the foremost hybridizer. To her we are indebted for AVALON, DREAM, MME. CHERI, NANCY ORNE, SHEKINAH, etc. Her Iris are a wonderful blending of colors, with all the more violent tints eliminated. Perhaps her finest new ones are AUTUMN GLOW, CAMELIARD, CANDLELIGHT, PRIM ROSE, REVERIE, SNOW WHITE and TRUE DELIGHT.

The new California seedlings originated by MR. MOHR, and introduced by MR. SALBACH, are really superior. Many of them bloomed here for the first time in 1927, and were very fine indeed. I can highly recommend them. Among them were ALVARADO, AZULADO, BAN DOLLERO, CLARIDAD, CONQUISTADOR, CORONADO, EL CAPITAN, HIDALGO, ROSADO, SAN GABRIEL, SANTA BARBARA, and VALENCIA, an unusual orange buff. For 1929 we will have AURIFERO (Goldfinch). "The tall standards of palest lavender, and flaring falls flushed rosy lavender are of the finest finish and style. The brilliant golden beard and hafts help to give this variety its name." DON QUIXOTE is a strong, quick grower, about three times the size of QUAKER LADY, whose coloring it resembles. LOS ANGELES, PURISSIMA, and SAN FRANCISCO are three immense whites of perfect form and substance. PURISSIMA is rated at 96. FRIEDA MOHR is a wonderful big pink, bi color said to be unsurpassed. WM. MOHR, 1925, is a wonderful hybrid from Parisiana X. Gatesii. The ground color is pale lilac, standards flushed darker, the whole flower beautifully veined violet.

Many of the above-mentioned Iris are already described in our lists, and are ready for distribution.

## Japanese Iris

These gorgeous flowers bloom with the last of the bearded varieties about the middle of June, continuing well into July. The color range is from white and the pale tints, to rich purples and raspberry reds. They open flat like an overturned saucer. Some have three petals; others have six. DO NOT GIVE THEM LIME. They prefer a sour soil, but will do splendidly in the flower border, providing the soil is kept moist before their flowering season, and afterwards when they are forming their flower buds for next season. Keep the seed pods picked off, when the flowers are withering, and then they will devote all their time and energy towards making a finer and better plant for the next season. This applies to all flowering plants and shrubs. Japanese Iris are splendid for waterside plant



ing, but must not stand in water over winter. These are sold mixed for the simple reason that the Japanese names are almost impossible to translate into equivalent English.

Mixed—25 cents each; \$2.50 per dozen.

## Siberian Iris

Fine grassy foliage, with tall stems crowned with bright butterfly-like flowers. Free flowering and excellent cut flowers.

WHITE—Ivory white with a gold blotch .....	\$ .25
DWARF BLUE—A violet blue about 1 ft. Fine for rock gardens .....	.25
GEORGE WALLACE—Light purple blue with darker falls. 2 ft. ....	.25
BLUE BUTTERFLY—Well named. 3 ft. and very fine .....	.35
MRS. ROWE—Silvery white flushed rose .....	.50
ORIENTALIS—Crimson purple. 3 ft. ....	.35
EMPEROR—Deep violet blue .....	.35
PERRY'S BLUE—Very charming, and, I believe, the best of all. It is an improved Blue Butterfly, about 4 ft. tall .....	.50

## Various Iris

### ROCK IRIS

CRISTATA—A dainty dwarf variety, suitable for rock gardens .....	\$ .25
GRACILIPES—Lovely soft lavender blue, gold crest .....	.50

### FOR WATER GARDENS

PSEUDO-ACORUS—The Water Iris with deep yellow flowers. This will enjoy being in the boggy places .....	.25
PSEUDO-ACORUS FOL. VAR.—A variegated form .....	.50
MONSPUR—Stout spikes with pale blue flowers .....	.50

### SPECIES

I. CHRYSOGRAPHES—Neat grass-like foliage. Purple flowers .....	.50
I. CLARKEI—Soft yellow and lavender. Grassy foliage .....	.50
I. FORRESTI—A Chinese species like a dwarf yellow Siberian .....	.50

## PERENNIALS

The demand for new and trustworthy perennials has made me decide to list the very finest hardy garden plants obtainable. These will not be offered until after they are acclimatized and found suitable for our coast climate.

I expect to issue a list during the early spring of 1929. These will include such fine Asters as King George, Frikart, Barr's Pink, Beauty of Ronsdorf, Mother of Pearl, etc., etc. The finest of seedling Delphinium—Wrexham's, Kelways's, Lemoine's, etc. Oriental Poppies—Lord Lambourne, Mrs. Stobart, Orange King, etc.

LUPINE—The wonderful new hybrid Lupine are among the finest of the fine new garden plants, and perhaps the most robust of all. There is a wonderful color range, including yellow, reds, rose, purple, blue, and all the intermediate shades and combinations.

The new PHLOX will include CAMILLO SCHNEIDER, BARON VON HECKEREN, SALADIN, MRS. ETHEL PRITCHARD, etc., etc., and a great many other new plants of exceptional merit.

## Russian Wolf Hounds

We have a few fine Russian Wolfhound puppies for sale. The Borzoi are surpassing all other dogs in popularity to-day. One needs only to look at any fashion magazine to see Milady beautifully gowned and accompanied by her Borzoi. Their gentleness, intelligence and beauty recommend them, to say nothing of the very reasonable prices at which they are now offered.

They make an exceptional gift for a young girl, or charming debutante.

The excellent foundation stock is as follows:

"NIEMAN OF AZOV" (47456). Male.

White, with orange markings.

Born May 24th, 1925.

"ONEIGNA 2nd." Female.

White, lemon markings.

Born May 21st, 1923.

Strong, healthy, country bred puppies:

MALES, \$50.00; FEMALES, \$35.00.