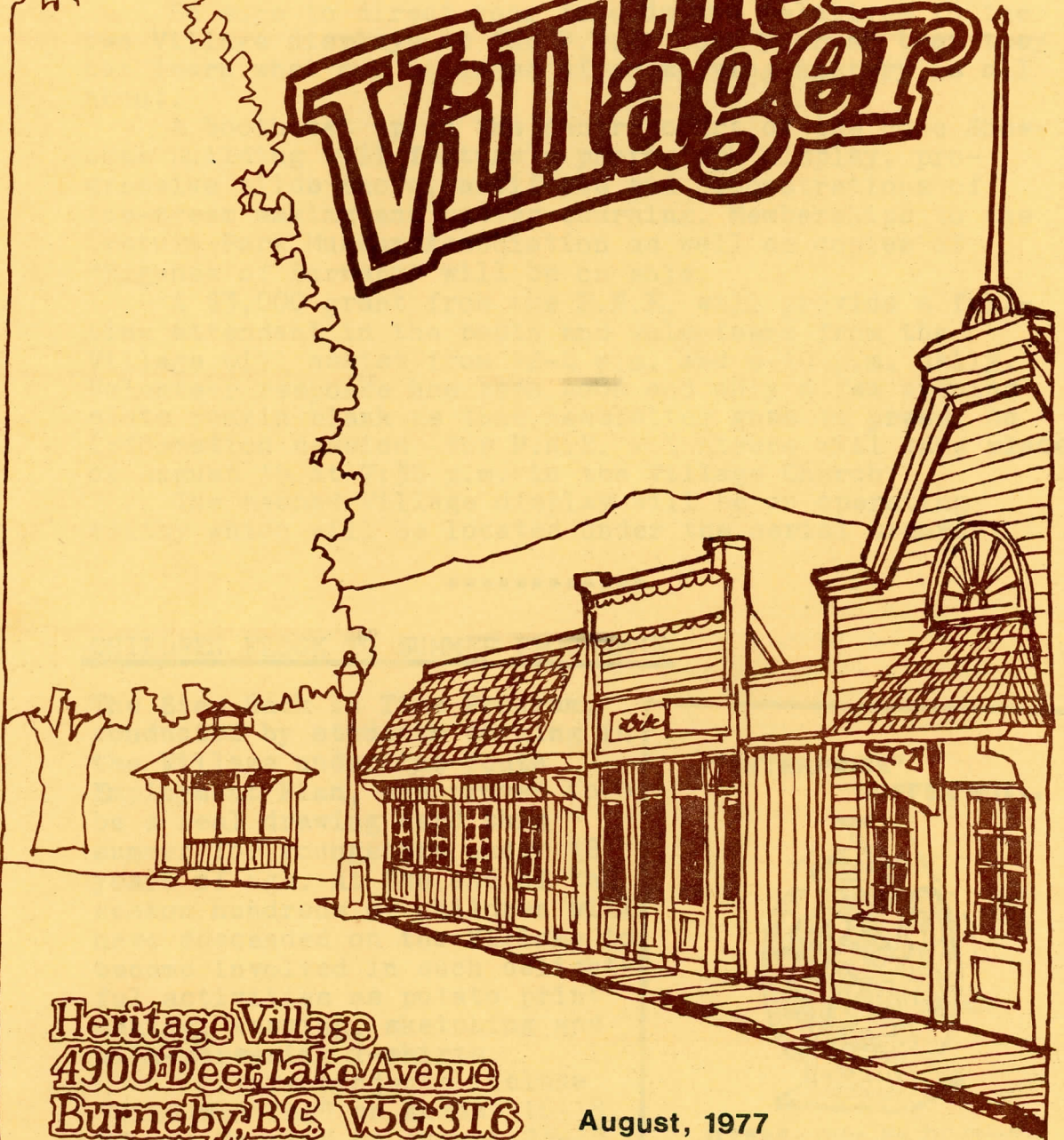


The Villager



Heritage Village
4900 Deer Lake Avenue
Burnaby, B.C. V5G 3T6

August, 1977

WATCH FOR P.N.E. DISPLAY

Be sure to direct your friends and relatives to the two Village displays at the P.N.E. this year so that they can learn what our business of preserving history is all about.

A booth set up in the centre court of the Home Showcase Building will feature a photograph display, progressive slide shows, artifacts and demonstrations of ice-cream making and butter churning. Memberships to the Century Park Museum Association as well as copies of "Bygones of Burnaby" will be on sale.

A \$3,000 grant from the P.N.E. will provide a full-time attendant in the booth and volunteers from the Village will assist from 12-4 p.m. and 6-10 p.m. daily. Volunteer response has been good and only a few evening slots remain blank as this newsletter goes to press. An information session for P.N.E. volunteers will take place on August 15 at 7:30 p.m. in the Village Church.

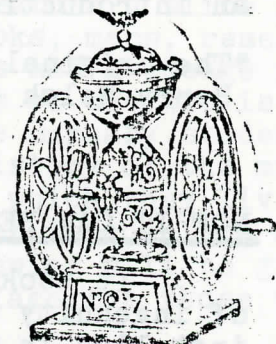
The second Village display will be an operating smithy which will be located under the aerial tramway.

CHILDREN FLOCK TO SUMMER PROGRAMME

The Step Back In Time Program, conducted by students working in the Village under the Youth Employment Plan, has proved to be a real drawing card this summer for youngsters under 12 years of age. At the end of the season hundreds of children will have descended on the Village to become involved in such delightful activities as potato print making, weaving, sketching and silk-screening T-shirts.

Future projects include "Wild Weaving" on August 16-18, "Sweet Treats" on August 23-25. The last sessions, August 30 to September 1, will see youngsters playing games of yesteryear.

"ENTERPRISE" COFFEE MILL,



H 2866 - (Mrs. No. 7). Counter.
21 1/2 in. high, 17 in. wheel diam., finished in red and blue, gold stripes, chilled steel grinders, adjustable, grinds 1 lb. in 50 turns, holds 1 1/2 lbs. 1 incrate, 62 lbs. Each, \$3.50

OLD BURNABY FARM DISAPPEARS

Very soon the Lubbock Farm at Canada Way and Haszard Street will be only a memory. Even before this news-letter reaches you the buildings on this farm cum riding stable will probably have been razed and bulldozers will be tearing up the earth for a housing development, obliterating forever one of Burnaby's oldest farms.*

Fortunately, thanks to Mr. Ainsley Lubbock, Village staff and a \$5,000 grant from the Lubbock property developers, historical research has been done on the farm, photographs have been taken and some physical reminders of the past have been rescued for incorporation into the Village scene.

From July 15 to August 5, Village staff put in a 24-hour security watch and crews worked during the days to dismantle original barn siding and timbers as well as doors, windows, baseboards and usable lumber from the house. The original square section of the house, built in 1898 for Edgar Sprott and referred to by the locals as "The Matchbox", is being completely dismantled and moved to the Village in hopes that future land expansion will allow construction of farm buildings.

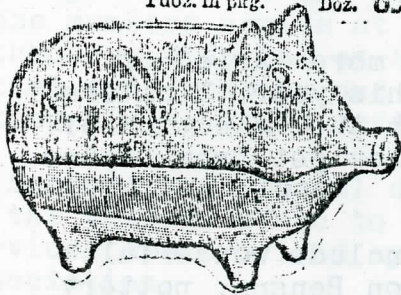
The farm's blacksmith's shop and a small building which originally served as the Vorce Station on the Burnaby Lake tram line, have joined the Village complex. The station, which will be restored by the Burnaby Kingsway Rotary Club just inside the Village entrance gate, will serve, with the aid of photographic displays, etc., as an introduction centre to Heritage Village.

*The original farm contained 161 acres and was owned by Henry Welsh who obtained it as a crown grant in 1865.

NOW IT CAN BE TOLLED

It took some precarious balancing and a great deal of ingenuity on Fred Hick's part but the bell is now installed in the Village Church and weddings and other joyful occasions can be traditionally announced. Acquired through the South Burnaby Men's Club, the bell started its career with the Canadian Pacific Railway.

CHARLOTTE 1977 - A splendid ten cent
PIG BANKS. lower. 100% board,
luscious, glazed chocolate
finish, opening in back. Doz. 89c
1 doz. in pig.



SECOND PRINTING

Sales of "Bygones of Burnaby" have been so good that the book is now going into second printing. You can buy copies in the Village Gift Shop, the Burnaby Municipal Hall and various book stores and it's not too early to stock up a few copies for Christmas giving. Don't forget, all profits from the sale of this book go to the C.P.M.A. for Village development.

BROKEN RECORDS

Three attendance records have been broken so far at the Village, attesting to the site's popularity which never seems to stop growing. On Wednesday, July 20, 689 people passed through the gates to set a new attendance high for a week day. July 1, a free admission day with the gate being bought by Rayonier Canada Ltd., set an all-time summer record with 4,313 visitors. A new record for

paid admissions was set on B.C. Day, August 1, with 2,441 people in attendance.

MUSEUM WORKSHOPS

All Volunteers and C.P.M.A. members are invited to attend the Museum Workshops which are held at 1:00 p.m. on the last Thursday of every month. These sessions are designed to keep everyone informed about Village progress and activities. The topic for August 25 will be "Old Curly and the Logging Equipment."

HISTORY KIT

One of the grants received by the Village this summer has provided personnel to research and plan a resource kit aimed at use in Burnaby schools. Titled "Burnaby - Images of Change", this Burnaby history kit will feature a slide show, resource books, maps, research productions and a usage guide. The purpose of the kit is to familiarize Burnaby students with the history of the municipality in which they live. When the kit is complete a special showing will be given at the Village for those who are interested.

Editor, "The Villager" -
Pixie McGeachie.

GIFT SHOP STOCKS BETTER THAN EVER

Gift Shop stock has never been more varied or looked as interesting as it does this year. Visitors cannot help being impressed by both the selection of items and the pleasant greetings they get from Daphne Carr and her volunteer helpers.

Attractive handcrafted items include wonderful wooden toys made by Burnaby's Gordon Benson, pottery crafted by Jytte Thumond and enamel and copper plates and jewellery by Barb Glover.

Large Raggedy Ann dolls at \$21.95 and Golliwogs at \$5.95 are all hand-made and ready to make any youngster happy. Jade, petit point jewellery, ceramic plaques, leather goods, Heritage Village spoons and charms and English "Price" china are all there to tempt prospective buyers. And for those who want to take home a reminder of the ofuro, sponges, pumice stones, back scratchers and small towels are available.

Every item in the Shop is reasonably priced and no one can complain that "tourist prices" exist here. The Village Gift Shop is just the place to find unusual gifts which you probably won't find anywhere else.

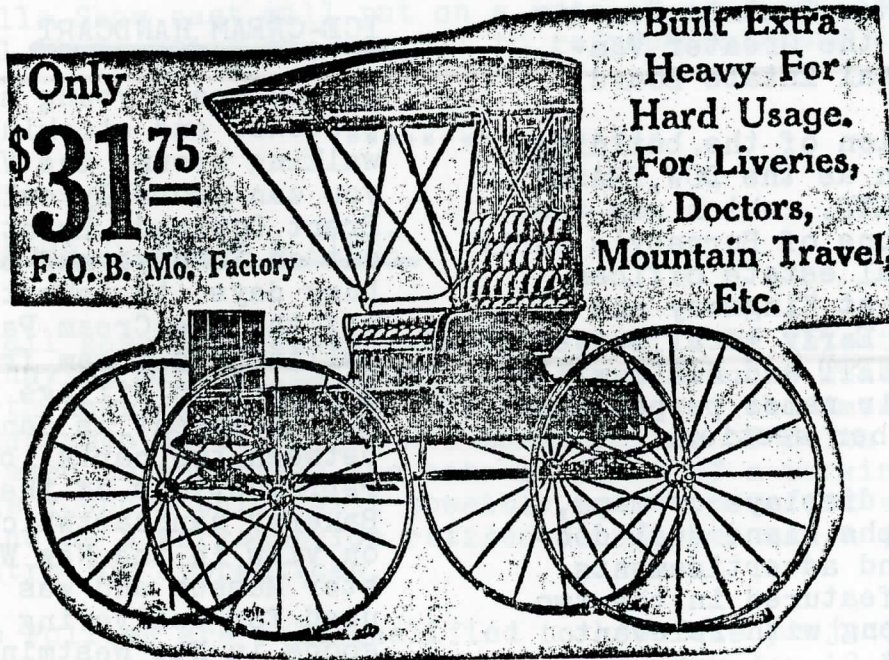
OFURO ATTRACTS VISITORS

The ofuro or Japanese Bath is proving to be a popular attraction among the Village's varied establishments. It is providing an exhibit of something which most people have not seen before since it is a unique, Japanese institution first brought to this country a century ago when the first Japanese arrived to make their homes in British Columbia.

For several centuries before that, generations of Japanese enjoyed, in their own country, the pleasures of the public bath. It was, and still is in Japan, a place

to soak in a deep bath, relax and chat with co-bathers. In Tokyo there is an "Association of Morning Bathers" whose members arrive at their respective local public bathhouse, starting at 4:30 a.m., to enjoy bathing, social conversation and the sipping of green tea before taking up the day's duties.

On Sundays and special days Beatrice Oikawa is on hand at the Village ofuro to explain its significance. Her services are provided by the Japanese Canadian Citizens' Association.



Only
\$31⁷⁵
F. O. B. Mo. Factory

**Built Extra
Heavy For
Hard Usage.
For Liveries,
Doctors,
Mountain Travel,
Etc.**

HISSING AND BOOING ALLOWED..... that's what the sign says on the door leading into the downstairs area under the Bank Building. Treating villains in this traditional manner is all part of the fun of attending "Village Varieties". Presented by Heritage Musical Theatre, this clourful revue of old-time songs, skits and repartee is delighting audiences every Saturday and Sunday afternoon with the first shows starting at 1:30 p.m. Admission is \$1.00 with free entrance for "kids on knees". (if you don't stack them up too high)

NEW BUILDING

The Real Estate and Surveyors' offices, next to the Bank Building, are steadily reaching restoration goals and will soon be open to the public.

The building, once a flower shop and confectionary at 6110 Patterson Avenue in Burnaby, was donated to the Village by the Burnaby-Coquitlam-New Westminster division of the Greater Vancouver Real Estate Board.

One section of the building will open as the DOW, FRASER COMPANY LTD., which was the name of one of Burnaby's early real estate offices situated at Kingsway and Edmonds. Early local surveyors, BURNETT and HILL, will have their names perpetuated on the other section.

Changing displays of maps, photographs, land deal documents and advertisements will be featured in the two areas along with relevant equipment.

Official opening date of this building has been set for September 15.

PHOTOS COPIED...The village's historical files recently

gained some new photographic insight into Burnaby's early days when Mr. Bruce Patterson, after whom Patterson Avenue is named, and Mr. Claude Hill, who came to Burnaby in 1892 (see "Bygones of Burnaby"), lent the Village their photograph collections for copying.

ICE-CREAM HANDCART

If you see a young man in breeches and stockings walking around the Village you can probably call him Brent Copland. Brent turns out on Sundays and other busy days to take the press-off the Ice-Cream Parlour by selling ice-cream from a handcart to Village visitors. At the moment he can choose between two carts, both faithful reproductions of the "Orkney Bakery" handcart which is now on view in the New Westminster Museum and was formerly used for delivering bakery goods in New Westminster around the turn of the century.

A second "peddler" in the Village can be seen riding on an ancient bicycle with a basket on the back - reminiscent of Japanese peddlars who used to travel about the lower mainland. His specialty is rice crackers.

COME TO LABOUR DAY PICNIC

Will another attendance record be broken on Labour Day, September 5? Time will tell. In the meantime plans are shaping up for another day of outstanding events including a corn roast from 12-4 p.m. Volunteer greeters and display hosts will be needed to make the Village fully functional on this final day of daily operations.

When the gates close at 6 p.m. all volunteers, staff and C.P.M.A. members are invited to attend a wind-up picnic in the Village. So plan to bring along your supper for a start to an enjoyable evening. It is hoped that the Vaudeville Show cast will put on a special performance. Staff will be treating one and all to refreshments and dessert.

VILLAGE TO SCORE A FIRST

If all goes as planned, the Village will be able to boast of having within its bounds the first foundry museum in North America. Backed by the resources of the American Foundrymen Society, Reg and Donna Police of Delta have offered to undertake the establishment of a working vintage foundry which will possibly be in operation all year round as a workshop for retired foundrymen and a training centre for apprentices.

The Polices are well qualified to head the project with Donna having been secretary for a foundry for 10 years and Reg, an architect, being the great-grandson of a foundryman whose male offspring have followed in his profession. Reg will design the museum building as a small 1920 foundry replica. Research and collection of materials for the project has been aided by the hiring of two students on a B.C. Youth Employment grant sponsored by the Cloverdale Jaycees.

Anyone interested in contributing documents, pictures or verbal information to this project can call - 594-6344 or write - AFS Foundry Museum and Archives, 8499 - 110A St., Delta, V4C 2K5.

OCTOBER BRINGS SCHOOL PROGRAMS

No sooner does the Village close its gates for the summer season than the elementary school tour program begins. Starting date this year for the tours is October 11 and no doubt the schedule book will be filled before that date so popular have the Village school tours become.

Volunteers will be needed again to make the tour program possible and a call is out for all those who are interested. There have been some changes made in the program so it is necessary for all school tour volunteers to attend training time so that everyone will start out with the same basic ideas of the content and purpose of the tours.

Each information session will be offered twice (1:00-3:00 p.m. and 7:30-9:30 p.m.) on Mondays and Tuesdays beginning September 12 and running for four weeks. For further information please phone Village Co-ordinator, Bev MacPherson at 294-1232.

BURNABY'S GRAVE VISITED

This summer Fraser Wilson, a C.P.M.A. Director and member of the Robert Burnaby Committee, and Dr. and Mrs. George Bramhall, Burnaby Historical Society, visited the grave site of Robert Burnaby in Emmanuel Church burial ground, Loughborough, England. Arlene Bramhall, President of the Burnaby Historical Society, reports that the grave and marker were rather neglected so they did a bit of cleaning up. Fraser made a sketch of the site while the Bramhalls took pictures, all of which add to the information we have about the man whose name our municipality perpetuates.

Don't forget, 1978 is the 100th anniversary of Robert Burnaby's death and the 150th anniversary of his birth. The Robert Burnaby Committee of the C.P.M.A. is looking into ways of marking this special year and by next newsletter should have some interesting things to report.