

The Villager
Spring 1984



FOREWARD

This 1984 Spring issue of the Villager will attempt to provide information to the many new members of Century Park Museum Association who have joined this year.

There are three issues of the Villager each year - Spring, Summer, and Fall. Each will enable us to bring all members up to date on what is happening around the museum and give you notice of our special events.

The museum operates with staff and about 100 volunteers who assist in all types of operations. Recently we had a volunteer training session which ran several days in March. Part of the material given to new volunteers was, "An Outline of the History, Ownership, Management, Staffing and Funding of the Museum". To all new members, this outline will also show how we operate and who is involved. This outline is on pages 13 to 17. Please remember that this article was originally addressed to volunteers.

As usual in this publication, various staff members will give a report on their own area of interest.

Should any Association member wish to have an article included in the Villager, please contact me. Your interest will be appreciated.

R.P. SCHOFIELD
MUSEUM DIRECTOR

A MESSAGE FROM YOUR PRESIDENT

I have been asked to contribute something to the Villager for the Spring edition. This being my first opportunity since being elected your President for 1984, I would like to wish each of you a very prosperous and enjoyable 1984.

We are indeed facing a very enjoyable year ahead as far as the museum is concerned. Blessed as we are with an excellent Museum Director, a very knowledgeable and dedicated staff, and a volunteer pool that is second to none, it makes things considerably easier for all concerned.

The museum is in the process of expanding and by the time the next Villager comes to print, I hope we can give you some concrete information regarding this expansion. As everything hinges on the overall transportation plan for the entire area, this plan has been in the making for several years, involving governments, the regional district and the municipality, plus organizations such as ours. But we are very hopeful that it will soon be finalized.

By way of keeping you better informed, I should tell you that since the first of the year when we undertook a new membership drive, our numbers have shown significant gains. We wish to place greater emphasis on making the members a part of what is happening, and so I am going to give you an opportunity to offer some suggestions as to what you would like to see done.

At the present time, your Board of Directors meet on the fourth Tuesday of every month, in the Village, except in December when everyone is so busy both at home and in the Village. There is also one general meeting a year held in November, when the Annual Reports are heard and the election of the Board of Directors is held.

Space could be provided to conduct the Director's meetings in a manner similar to that used by Burnaby Council, Burnaby Parks Commission, or the School Board. That is to say that all C.P.M.A. members could attend the meetings in an observer capacity. Should you have something that you wished discussed, you would notify the Museum Director, who in turn would place it on the Agenda, and you would be given an opportunity to speak to it when it came up on the Agenda.

Another thought would be to increase the general meetings to perhaps three or four per year, instead of only one.

You have shown interest in the Village Museum by taking out a membership in C.P.M.A. Please continue that interest by phoning Sandra Leonard, Assistant to the Museum Director at 294-1231, or myself, Stan Fisher at 420-2297, and let us know what your thoughts are on this question, even if you would rather continue with the status quo.

STAN FISHER
PRESIDENT
C.P.M.A.

MUSEUM DIRECTOR'S REPORT

The Museum Director is mainly involved with staff relations, financial control, acquisition of funds through grants, the overview of day to day operations, and future planning.

Our future plans are to expand east across Deer Lake Creek, across Dale Avenue to Sperling Avenue. This will increase the museum size about 250% and will allow for more varied displays for everyone's interest. As the Director, I have been busy working with committees and the Museum Board over the last few months attempting to put every idea down on paper. These were at last formulated into a conceptual master plan for the total area. It has been reduced considerably in size to fit the Villager format, but I trust that with the aid of a magnifying glass, the ideas can be interpreted.

Basically, the plan shows everything west or above Brookfield Lane as existing Village, and everything east or below that Lane as new. The new entrance will be at Sperling and Canada Way by the large storage and administration buildings. Most of the area along the creek will show an earlier rural lifestyle before entering the Village.

There are a host of minor issues to overcome before the master plan can take its final form, including the position of a road named Park Drive. Other questions such as, will the construction be phased? Where is the total amount of funding coming from? What will be the operating costs of a museum this size?, etc. etc.

Possibly by the time of the Fall issue of the Villager, all approvals will be in place and a final master plan prepared for the expansion, and we will be able to give you more factual information. In the meantime, I must say that I enjoy this dynamic period of change and growth, for on completion it will be the largest and hopefully the best museum in the area.

During 1984, one of our main objectives is to complete some of the routine maintenance programmes which are required so badly. Therefore, we have several new shingled roofs, and the painting of several buildings is planned.

Seaforth Schoolhouse has had the complete exterior shingled and is to be painted through the generosity of a grant from B.C. Heritage Trust. An application for a further grant has been made to Parks Canada in order to complete the interior display in time for opening next year.

In the next few weeks, we plan to move the old B.C. Electric Tram further down the track behind the Ice Cream Parlour and to temporarily build a cover over the tram to protect it from the elements. This is only a partial solution to the problem, however, and we will not be able to restore the tram until it has a new building especially built to house it. This will be provided for in the expansion plan, but until that time, this is a step in the right direction.

Other plans include Elworth House, which is now in use as offices. The exterior requires painting, new gutters, etc., and this work will be completed by mid-summer. Then when the expansion is completed, the house will be ready to open as a display once again.

Another area of concern is the museum finances. 1984 will be another year of rather tight control and limitations to our programmes. However, it is too early in the year to make a complete projection, for our attendance may be improved over last year, and the decisions on whether we will receive the grants we have applied for still have to be made. I somehow feel positive about the situation; maybe it's the wonderful spring weather we have had recently, but whatever the reason, I trust you will all enjoy the museum this spring.

R.P. SCHOFIELD
MUSEUM DIRECTOR



CURATOR'S REPORT

by Jennifer Pride, Curator
January - April, 1984

During the museum's closure to the public, the months of January and February were used to accomplish a considerable amount of work in the areas of major display renovation, conservation, and spring cleaning.

Display Renovations

In the General Store (both Upper and Lower), Auto Shop, Dress Shop, Print Shop, and Chinese Herbalist, 4-inch v-groove tongue and groove board ceilings were put over over insulation. This has lent a more finished appearance to these displays and will stabilize the ambient temperature to better protect the artifacts. This work, involving many levels of staff and much preparation and clean-up took the best part of six weeks.

To add to the lightening effect of the new ceilings, all light bulbs in the museum were changed from frosted to clear. In some displays, light levels were raised, where this would pose no danger to artifacts. The General Store was modified to allow better visibility of artifacts, and greater ease of visitor circulation. New fixtures were installed, artifacts re-arranged, and others added.

Wille's Bakery was enlarged with the space gained by the relocation of a Fire Exit door nearby. It is hoped that the revamped display gives a more "live" feeling. In the near future, mock bakery goods will be added on the southwest wall in glass-fronted cabinets.

Gilchrist's Dress Shop was given a face-lift during this time. Besides a new ceiling, the wainscoting and floor were restained and refinished and two fresh spring windows of 1890-1930's clothes were installed.

The Print Shop received minor alterations in layout in preparation for a more major redesigning in May/June.

The Dow & Fraser Real Estate Office was graced by a glazed partition newly made by students from Burnaby Central under the direction of Len Lundene, which added further security and authenticity to that office.

On March 23, the Ruston Proctor Steamroller was collected by a team on behalf of the staff of Irving House, New Westminster. After several years at our museum, it may come as a surprise to many visitors that this imposing engine was in fact on loan. We will miss its mighty presence on Hill Street.

In its place, however, our carriages and sleigh are better shielded from the rain, rehoused beside the Blacksmith Shop, on new gravel.

Conservation

A nearly invisible ultraviolet screen has been applied to all windows of the General Store. This will greatly reduce the damaging effects of the sun in the coming season, while remaining undetected by the great majority of visitors.

The left hand window of the Print Shop has been similarly treated.

Treatment of an incipient infestation of bugs in the Textile Storage has been entirely successful. Humidity readings have been taken in all displays for the first quarter of the year.

Spring Cleaning

A major cleaning of all artifacts on display was carried out during these months. All display areas were thoroughly dusted, polished and washed, where necessary.

Municipal Hall Displays

On display at the Municipal Hall were the following displays of artifacts from Heritage Village:

January 17 - April 18

'Fair Play' - an exhibit of Victorian and Edwardian toys

April 18 - May 24

'Champions of Fire' - dedicated to the members of the Burnaby Fire Department

Major Recent Acquisitions

- Chandler-Price platen press, circa 1887
- Multigraph Addressograph, #6 plus accompanying type
- Computing Scale Co. meat scale, circa 1907
- Set of Veterinarian dental tools for horses

ALL ABOUT OPERATIONS

by Gilda Heath, Operations Coordinator

For those new members who are just becoming familiar with the museum, I'm Gilda Heath, and I work in Operations. This is my fourth season at the museum and I've enjoyed it more and more each year. In a nutshell, I'm the person who gets to think up the fun! For example, Baby Contests, Lunch with Father Christmas, games for kids like Needle in the Haystack, or pie-eating contests, are all mine. We have a great staff and group of volunteers who help out during these events, and ultimately make them a success.

One of my other functions is to promote the museum in our immediate and tourist area. This year I am concentrating on local awareness and hopefully, you as a local resident will be hearing our name more and more. You may have seen an information card that was delivered to all Burnaby and New Westminster homeowners. This card outlines our description of the museum and includes a 2 for 1 admission coupon. We are already seeing a response, so I think we're moving in the right direction.

Take time out this spring and enjoy some of our featured celebrations.

On Mother's Day, May 13, the Voxhumana Acapella Singers will be performing at 1:30, and Ruby Johnson will be demonstrating homemade soap-making in the Log Cabin.

On May 21st, as has become tradition, we will be celebrating Queen Victoria's birthday with a giant cake in the shape of a Union Jack flag. Visitors will be able to watch it being built of fresh strawberries, luscious blueberries, and real whipped cream, from 11:00-2:00 p.m. at 2:00 p.m. we will serve it free to visitors. Last year we had 700 happy patrons! The Burnaby Summertime Pops Band will be performing from 1:30-3:00 p.m.

Drop into the museum on Sunday, May 27th. At 2:00 p.m. the Frederick Singers, childrens choir, will be putting on a concert of Folk Songs of Canada. They visited us last Christmas and were a delightful group.

Also, on Sunday, June 3 at 1:30, a well known local artist, Mike Absalom, will be putting on a Children's Concert. His program will combine traditional folksongs, original compositions, guitar, fiddle, storytelling and action suitable for younger children, who are given the chance to look, listen, answer, take part, and get used to being in an audience.

June 17, Father's Day, should be a lot of fun. The Antique Car Club will be displaying their vintage cars in the Village. Dad will be able to try his hand at spike driving, and shake splitting will be demonstrated.

During our Spring training sessions, there were some inquiries about First Aid courses. I have called the Justice Institute and they do have instructors who will come out and teach a "Heart-Saver" course. This is designed to help you manage an emergency situation until an inhalator or ambulance arrives. The cost of the four hour seminar is \$15.00, and a minimum of 8 people is required. If you're interested, please let me know.

VOLUNTEER ACTIVITIES

by Joy Buzza, Volunteer Coordinator

The Museum is indeed fortunate to have a complement of such dedicated volunteers. Their commitment to our recent week of in-depth training and enrichment sessions was extremely gratifying. Of the approximately 30 people per session, about half were new teen volunteers. We appreciate them spending their spring break from school taking this training!

On May 18th there will be an all-day Hat Workshop. Most of the female volunteers have to be properly costumed to give a turn-of-the-century image. This requires hats of certain styles, and our present stock of such hats is rather low. We do have the materials to correct this situation - therefore, the workshop. Members of C.P.M.A. are more than welcome to participate. We'll supply the needles and thread!

From June 26-30, we will once again offer a full week of training sessions to volunteers. These sessions are for credits toward the new special "gold" badges, and of course, provide excellent background to museum volunteers at no cost to them. The units offered are as follows:

Unit 1	The Art of Interpretation	Unit 6	Safety & Security
Unit 2	Basic Concepts of Museology	Unit 7	School Tour Guiding
Unit 3	Burnaby History, I and II	Unit 8	Conservation
Unit 4	Costuming, Grooming & P.R.	Unit 9	Food Services
Unit 5	Handling of Artifacts	Unit 10	Retail Services

Seminars vary in length from 2 to 4 hours.

For further details on the Hat Workshop, the June training sessions, or how to become a volunteer, call Joy at 294-1231.

EDUCATION IN THE MUSEUM

Spring '84

by Lynda Pitt-Brooke
Education Coordinator

Many of you may have heard that field trip monies have been cut back and that the majority of museums in the Lower Mainland are experiencing great difficulties in attracting school bookings. For example, Vancouver's Maritime Museum had only 1,300 students visit last year. This is not the case with our museum, with about 15,000 students having visited in 1983, and with us having to turn away a substantial number of requests for guided school tours this spring.

There are many reasons for our popularity. For example, in the Lower Mainland, which has a population of about a million people, we are the only 'living' museum where students can walk into a three dimensional experience of turn-of-the-century life and take part in pioneer activities such as making butter or ice-cream, scrub-board washing with homemade lye soap, write with slates, slate pencils, straight pens and inkwells, play with old-fashioned toys, or learn to count on an abacus in the Chinese Herbalist's Shop. We also tie in very well with the new Social Studies curriculum which was implemented last fall, particularly for Grades 3 and 5, where the themes are B.C. Pioneer Life and Canada Past, respectively. In fact, we tie in so well that it's almost as if the Ministry of Education had come to the museum and written the curriculum specifically for us! There are a multitude of other reasons why we are so much "in demand" including, of course, the work of our dedicated and knowledgeable docents (school tour guides) who deserve a hearty round of applause from us all! - and why we should all look forward and work towards our education programming being "full-steam ahead" once again.

The guided programmes for Grades K-7 that we are offering this spring were booked almost as soon as they were offered, and the docents are presenting an excellent quality of programme, with many "hands-on" activities.

During June, July, and August, we will be running our very popular, "In the Good Old Summertime", a self-led programme which will feature all of the "hands-on" demonstrations presented in our guided programmes as well as such featured activities as apple-bobbing and hand-cranking old-fashioned ice cream.

A special lecture afternoon is being held on Friday, June 22nd from 2:00 - 4:00 p.m. with Mr. Brian Kelly, an expert on the old interurban lines, being the featured speaker. The talk will run from 2:00-3:30, with an hour following for questions, as well as the chance to meet and greet old friends and to make the acquaintance of new ones, so we hope you'll be there! Please phone Joy at 294-1231, Wednesday through Saturday, so we can reserve a seat for you.

MEMBERSHIP INFORMATION

by Sandra Leonard
Assistant to Director

A warm welcome and hello to all our new C.P.M.A. members! It's really great to see such a good response to our special promotions and advertising. We hope you will enjoy being a member and taking advantage of visiting the museum as often as you like. Please carry your membership card with you and present it to the Gate Cashier when entering the museum.

As of April 24, 1984, we have 93 new memberships, consisting of the following:

45 Adults
34 Seniors
11 Families
3 Students

You may be interested in learning who your fellow C.P.M.A. members are, so we have taken the liberty of listing all members as at April 24, 1984:

Linda Gravlin	Lynda Morgan	Steve Deeming
Greg Kennelly	Dorothy Simpson	The Stewart Family
Paul Laverdure	The L. Brown-John Family	Mr. & Mrs. Gelbart
Lindsay McDonnell	Larry Ferguson	David Gelbart
Joan Harbord-Harbord	Mrs. Genevieve Frend	Leanne Kearns
Harry Pride	Henny Thompson	Denise Hurly
Ruth & Ted Clee	Emil Bentley	Dr. Loader
Adam Babiuk	George & Ruby Wilson	The Ostermeier Family
Daphne Carr	Mrs. Doreen Whipps	Anthony & Elsa Bodner
Mrs. Carolyn Carr	Mrs. Joyce Penny	The Sobie Family
Warren Carr	W. Stewart McRae	S. Keizer
Reed Clark	Elaine McMillan	D. Garrity
Merilynn & Lew Darbey	Dr. Turner & Family	Jean Huntley
Lyall Darbey	Douglas & Jean Hodgson	H. L'estrange
Marquita & Dennis Cooper	Doug & Debra Carr	The Gaunt Family
Bob Tidy	Fred & Arlene McDonald	R. & W.H. Morgan
Barbara & Nelles Glover	Paul Mohr	Anne Ehlert
Una Carlson	Ray Beaton	The Bezell Family
Stan Fisher	Dorothy & Don Wrigley	Gwen Pitman
Dorrain Hlavach	Lilian Hadsley	Ben & Margaret McLeod
Jim Wolf	Mrs. Jean Robinson	E. Salloum
Fraser Wilson	Arthur Chadburn	Mrs. Dorothy Miles
Miss S. Thompson	James & Doris Fowler	Russell Angus
John & Mae Murray	Phyllis Wainwright	Jim & Johanna Humphrey
Mable Pettigrew	Mrs. A. Harris	Ken Simpson
Hazel Moshansky	Lee Lightfoot	Mr. & Mrs. Vanderkuip
Evelyn Salisbury	The Arnott Family	Bill Copeland
George Douglas	Robert Allan	Darren Luu
Gwen Browne	Heather Watt	The Tabata Family
William French	The Shaw Family	Carol & Wayne Veregin
The Werder Family	Doris & Tara Langley	Henry & Violet Jolly
Gordon & Ruth Yule	John Smith	Marjorie Montgomery
		Susan & Maura Ingrahan

C.P.M.A. Life members are:

Miss Rose Bancroft	Mrs. Betty Forbes	Mr. Edward Russell
Mr. Frank Bradley	Mrs. F.L. Fleming	Mr. Vic Stusiak
Don & Barbara Copan	Mrs. Mary Hall	Mr. John Thomson
Mr. Leslie Copan	Mr. Ron Harvey	Mr. Ernie Whitfield
J.P. Daem	Mrs. A.C. Killip	Mr. Ben Wosk
Mrs. Ethel Derrick	Mrs. Valerie Ladner	Mr. Gordon Zimmerman
J.D. Drummond	Mr. W. Lewarne	Dr. Franklin Currie
Mrs. Ilma Dunn	J.G. Lorimer	Robert W. Prittie
Mr. Dale Elander	Mr. Malcolm Miller	James Barrington

THE KUSHIRO CUP

by Ethel Derrick
C.P.M.A. Board Member

Congratulations to one of our docents, Una Carlson, on winning the Kushiro Cup as Burnaby's Citizen of the Year for 1984. Una is only the second person to be presented with this cup - the first being another Heritage Village volunteer and Board member, Don Copan. The cup came to us from Kushiro, our Sister City in Japan.

Una well deserves this honor, as a good part of her time is spent in doing volunteer work which helps other people. Besides her work at Heritage Village, she is involved in Meals on Wheels, East Burnaby United Church, Sons of Norway, and other places where her voice of wisdom is always welcome. For recreation she looks after her small granddaughter, Eileen Elizabeth.

Una spent many years teaching in Burnaby, and likes nothing better than to have her former pupils visit her in the one-room school at Heritage Village.

We're proud of you, Una, and again, congratulations!

DID YOU KNOW, that currently there are 123 volunteers registered in various programmes in the museum, and as of April 24 we have 147 Century Park Museum Association members. There are only 15 C.P.M.A. members currently active as volunteers. We have many activities which may interest you, we encourage your involvement, and any inquiries you have would be most welcome.

For 1984, the C.P.M.A. Board of Directors is made up of the following people:

Council Appointees

Mrs. Ethel Derrick
Mr. Harry Pride
Mr. Ritchie Smith
Mr. Vic Stusiak
Mr. John Thomson

C.P.M.A. Representatives
(elected at Annual General Meeting)

Mrs. Una Carlson
Mr. Don Copan
Mrs. Merilynn Darbey
Mr. Stan Fisher
Mrs. Barbara Glover
Mr. Lindsay McDonnell
Mr. Gordon McKellar

Affiliate Representatives:

Mr. Rob Groves, Antique Car Club
Mr. Frank Fleury, B.C. Society of Model Engineers
Mrs. Evelyn Salisbury, Burnaby Historical Society

At the January 24, 1984, Board meeting, the following Executive for 1984 was elected:

President & Chairman	Mr. Stan Fisher
First Vice-President	Mrs. Merilynn Darbey
Second Vice-President	Mr. Harry Pride
Secretary-Treasurer	Mr. Don Copan

HERITAGE VILLAGE MUSEUM

An outline of its history, ownership, management, staffing and funding.

The museum was created as a Centennial Project in 1971 through funding received from Federal, Provincial and Municipal sources. The land and buildings are owned by the Corporation of the District of Burnaby. Century Park Museum Association has been involved with the management of the museum since the beginning in 1971. In 1981 a new form of relationship evolved between the Museum Association and the municipality and is still in place today, where the Museum Board of Directors report directly to the Municipal Council.

The total museum is owned by the District of Burnaby, but there is a management agreement in effect between the Municipality and the Museum Association to have the association manage the facility.

Board of Directors

Through the museum association a fifteen member Board of Directors for the museum is required and is composed as follows:

Burnaby Council Appointees

Each year the Burnaby Council appoints five individuals to serve as part of the Board of Directors, one of whom is a council member.

Century Park Museum Association

Annual elections are held from within the association's membership and seven members are elected to serve as part of the Board of Directors.

Affiliate Members

Up to a maximum of three members are appointed to the Board of Directors from its affiliated association membership. In 1984 the representatives are from the Vintage Car Club of Canada, Burnaby Historical Society and B.C. Society of Model Engineers.

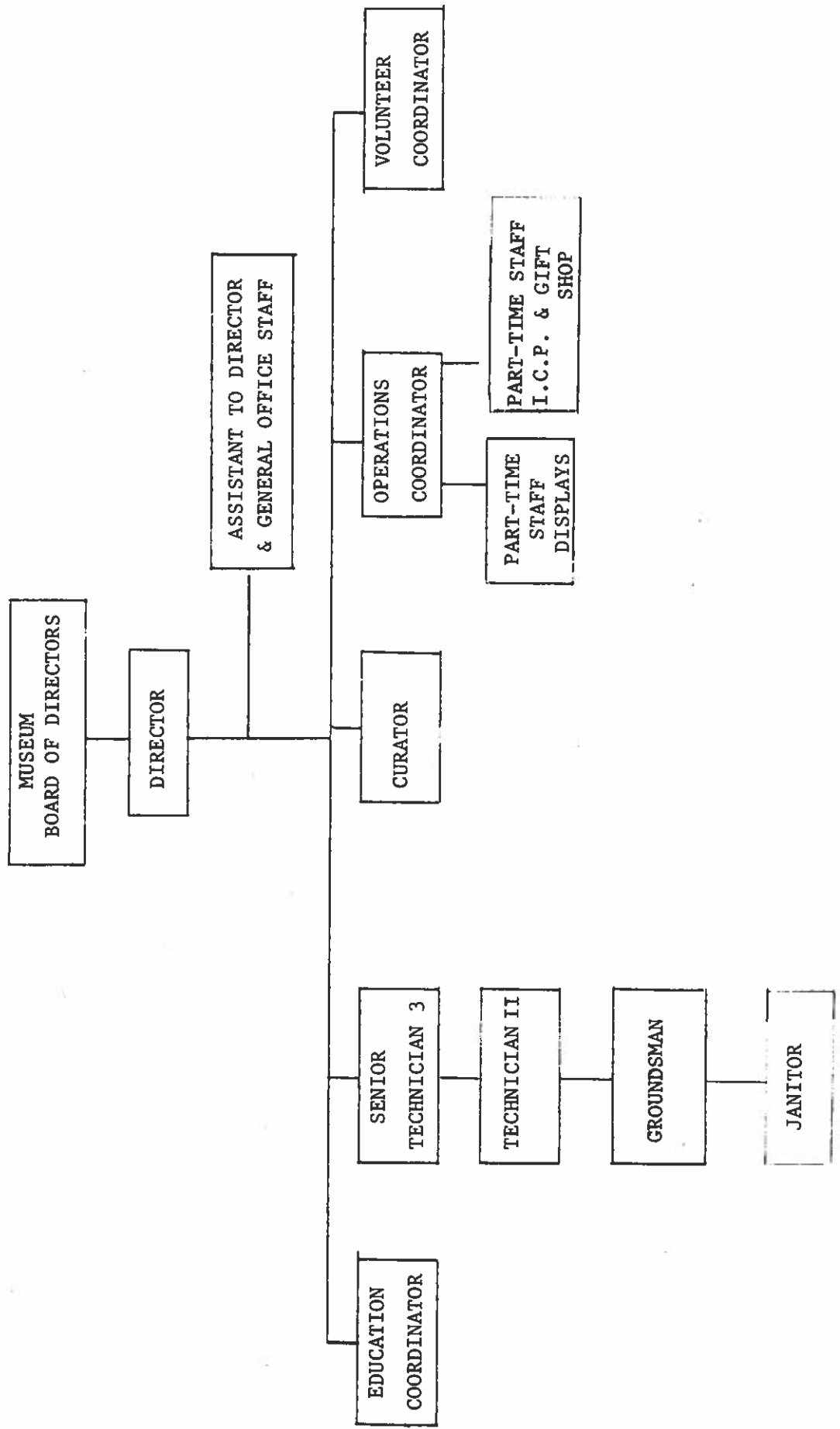
This fifteen member board meets each month, and reports directly to the Municipal Council as required.

Staff

Attached is the organizational staff chart which shows the name and title of each regular staff member and their reporting relationships to the museum director, and the museum director's reporting position to the Board of Directors.

The museum director's position is exempt, but all other staff members, whether they are regular, part-time, or auxillary are members of C.U.P.E. Local 23 and all job functions are governed

HERITAGE VILLAGE MUSEUM



by a collective agreement with that union.

You will note from the staff chart there are five positions which report to the museum director and possibly for those who are new to this museum a very brief outline of "who does what" may help you to understand the system better. Reading from left to right across the staff chart, can be found:

Education Coordinator

Lynda Pitt-Brooke is the person who composes and writes the educational programmes, communicates the information to the schools, takes bookings for the school tours, participates in the training programmes, and works closely with the volunteer docents.

Technicians

Bill Priday is the Senior Technician 3 who is responsible for display work, the lighting system, security system, steam equipment, all building maintenance, and supervision of the other three staff in his section.

Technician II

Erik Kristiansen assists Bill in all areas of his work but specializes mainly in woodworking.

Groundsman

Bob Burkitt is the man who completes all the gardening work, cutting grass, pruning trees, etc.

Night Janitor

George Wiebenger works from the late afternoon until midnight cleaning the total museum. Due to his hours of work, George meets very few people.

Curator

Jennifer Pride, as Curator, organizes the acquisition, documentation, display and storage of the museum's artifacts. She researches and designs new displays and develops procedures for the care and conservation of artifacts, and the museum's archives. A small group of volunteers help the Curator in a wide range of skilled tasks, including display, design and graphics, research, conservation, donation processing, and answering public enquiries.

Operations Coordinator

Gilda Heath is the person who organizes our special events and daily programmes and has part-time staff in four main displays. In addition, she is in charge of the Gift Shop and Ice Cream Parlour, which also has part-time staff. As in the other areas of the museum, volunteers assist in meeting and explaining the museum to the public.

Volunteer Coordinator

Joy Buzza is probably the first person anyone meets or knows initially when they wish to become involved as a volunteer. Joy conducts interviews with all volunteers and considering their talents, ambitions and wishes, places the volunteer with one of the other staff persons. Joy is very involved in communicating, scheduling, and a constant search for volunteers to assist our efforts.

Museum Director

The Museum Director is the person who coordinates these five main staff functions and also reports to the museum Board of Directors. The other aspects of the director's position are to maintain good staff relations, control finances, acquire grants from government agencies, future planning and a constant overview of the day to day operations.

Assistant To The Director

Sandra Leonard deals with all the Personnel details, records and files, prepares reports, and generally assists the director with the never ending flow of paper. A museum is like many business operations, there is a great deal of general office work required to support our day to day operation.

General Office Staff

Kitty Essar is our accounts/receptionist who answers the phone, takes gate admissions during the week, does accounts payable, typing, statistics etc.

I trust this brief outline of the staff and their duties will assist you in relating to us all. Should you as a volunteer have any problem that concerns you relating to your time spent here in the museum, would you please follow the following procedure:

First discuss the problem with Joy Buzza, the Volunteer Coordinator. Should the matter not be resolved to your satisfaction, please ask to see Peter Schofield, the Museum Director, about the matter, for ultimately all volunteers are the responsibility of the Museum Director.

Funding

Unlike many institutions we are not 100% financed from any one source, the basic breakdown is as follows:

- 55% of the required money comes from Municipal funds
- 10% of the total funds come through the Cultural Service Branch of the B.C. Provincial Government
- 35% is generated through the museum's operations.

Burnaby Central Railway

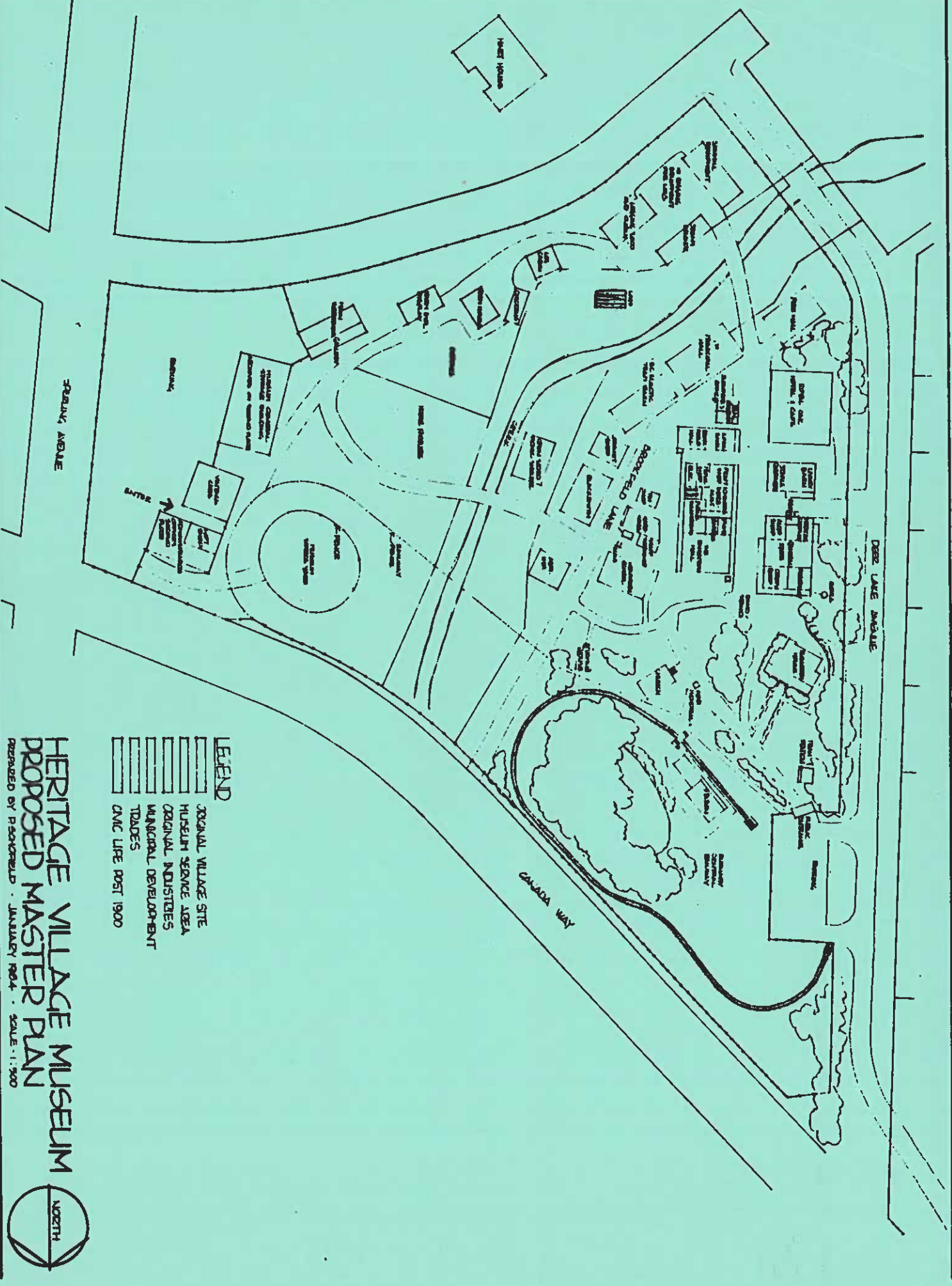
Next to the museum is a separate fenced area which contains the miniature railway. This is operated by the B.C. Society of Model Engineers, who run this railway entirely on an unpaid voluntary basis.

The railway is an associate member of the museum association and has a representative on the Board of Directors, but the railway is a separate entity from the museum and operates by a special licence.

The connection to the museum is an administrative one only, but they are very compatible neighbors and an attraction to the general public.

Due to the train ride being exposed to the elements, the railway does not operate the same number of days as the museum, but it generally runs Sundays only until Easter, then Saturdays and Sundays; with daily running commencing during the busy summer period (July and August).

This concludes this basic outline of our style of operation, but if you have any other questions about the museum, please feel free to ask any staff member.



- LEGEND**
- ▬ ORIGINAL VILLAGE SITE
 - ▬ MUSEUM SERVICE AREA
 - ▬ ORIGINAL INDUSTRIES
 - ▬ MUNICIPAL DEVELOPMENT
 - ▬ TRADES
 - ▬ DNC LIFE POST 1900

**HERITAGE VILLAGE MUSEUM
PROPOSED MASTER PLAN**

PREPARED BY PACTORFIELD • JANUARY 1984 • SCALE: 1:500

