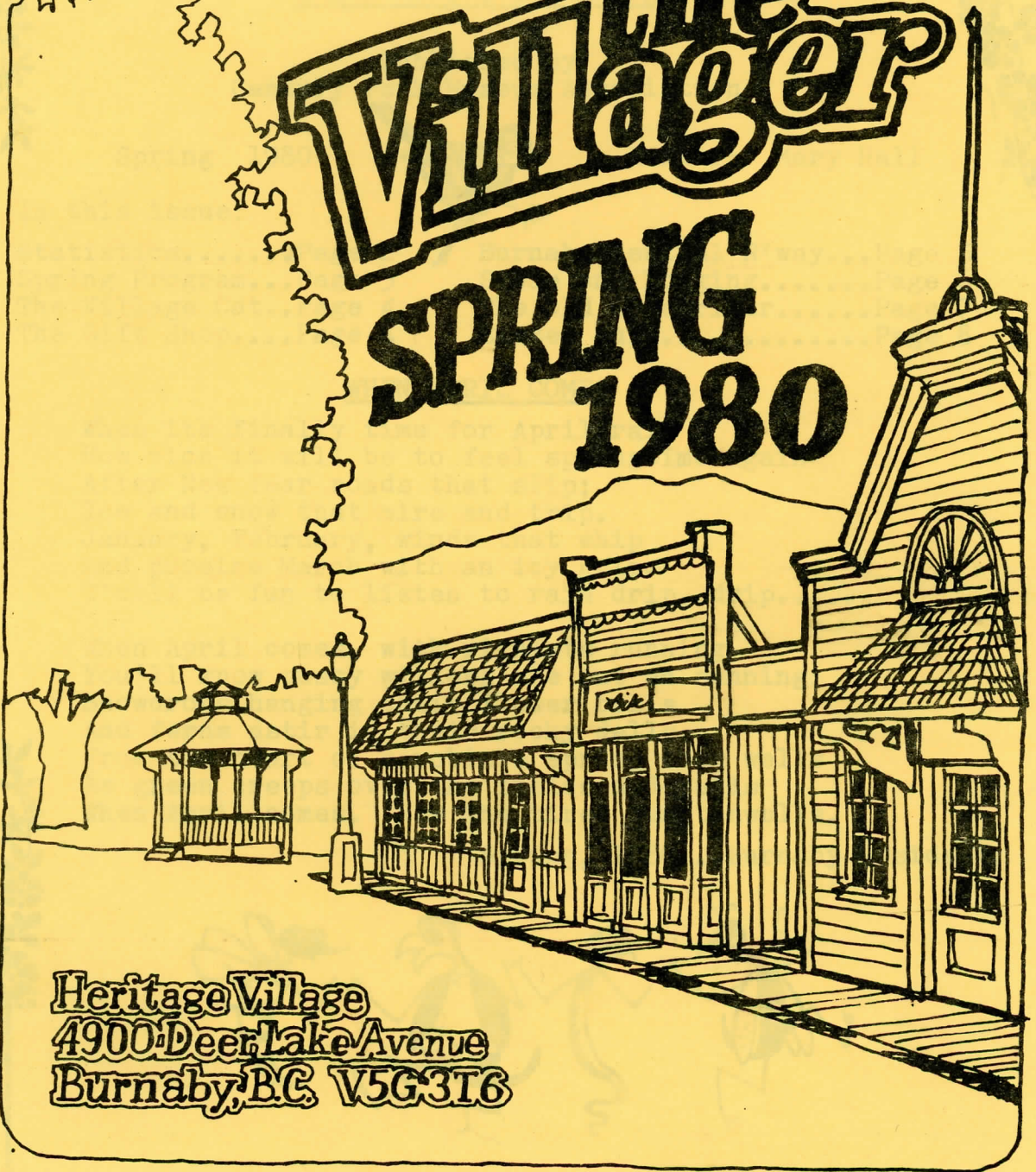


The Villager

SPRING
1980



Heritage Village
4900 Deer Lake Avenue
Burnaby, B.C. V5G 3T6

THE VILLAGER

Published by
Century Park Museum Association

Spring 1980

Editor: Mary Hall



In this issue:

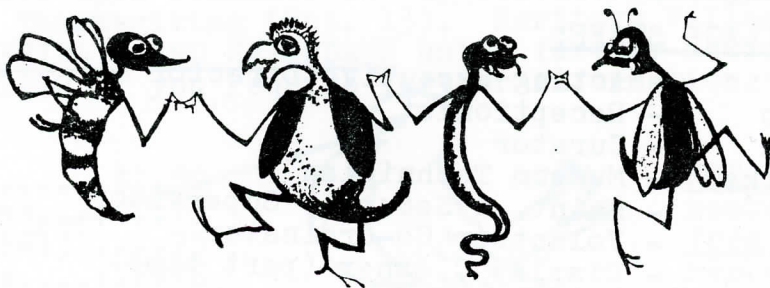
Statistics.....Page 2	Burnaby Central R'way...Page 5
Spring Program...Page 3	Steam and Logging.....Page 6
The Village Cat...Page 6	The Old Typewriter.....Page 7
The Gift Shop....Page 4	Easter Quiz.....Page 8

WHEN APRIL COMES

When its finally time for April rain
How nice it will be to feel springtime again
After New Year roads that slip;
Ice and snow that mire and trip.
January, February, winds that whip
And promise March with an icy grip.
T'will be fun to listen to rain drip, drip.....

When April comes, with rivulets running
You'll know pussy willows are out an sunning;
Snowdrops hanging their flower bells
And ferns astir in their rocky dells.
From the heart of a robin a spring song wells
As green creeps over the fields and fells
When April comes. Now the tired heart swells.

Spring, 1980...Burnaby Resident.



SPRING IS COMING!

FROM YOUR C.P.M.A. PRESIDENT

On behalf of the C.P.M.A. Board of Directors it is my pleasure to extend our warm wishes for a pleasant spring season. On your behalf your Board has been working hard to make Heritage Village a more integral part of the community and a major tourist attraction for Burnaby. We visualize Heritage Village as a place which all Burnaby residents will be proud to have as an ongoing commemoration of our 1972 Centennial project.

We look to you for your continued support. If you have time and can assist in any way with volunteer work at Heritage Village please contact our Volunteer Co-ordinator, April Jones, at 294-1232.

The following slate of officers and members were elected on November 29, 1979 to hold office until November, 1980.

<u>PRESIDENT:</u>	Merilyn Darby	Treasurer:	Don Copan
1st Vice Pres.	Stan Fisher	Secretary:	Betty Forbes
2nd Vice Pres.	Lindsay McDonnell	Past Pres:	Joe Corsbie

DIRECTORS: Rose Bancroft, Bing Bakkan, Ray Beaton, Ethel Derrick, Doug Forbes, Barbara Glover, Mary Hall, Frank Street, Bill Sutherland, Fraser Wilson.

REPRESENTATIVES - Affiliated with the Board of Directors:

Alderman Vic Stusiak	- Burnaby Municipal Council
John Thomson	- Burnaby Parks & Recreation
Martin Rogers	- B.C. Soc. of Model Engineers
Reg Millway	- Burnaby Historical Society
Brian Shadwick	- C.S.P.I.A. (Steam) Assn.

MANAGEMENT COMMITTEE:

Merilyn Darby: Chairperson, Lindsay McDonnell: Vice Chairperson, Don Copan, J. P. Daem, Doug Forbes, John Thomson and Alex Turkington.

HERITAGE VILLAGE STAFF:

B. Miller	- Acting Executive Director
B. Badgero	- Receptionist
R. Duckles	- Curator
G. Flanderka	- Museum Technician
F. Hicks	- Maint. & Security Supervisor
A. Jones	- Volunteer Co-ordinator
M. Naylor	- Display Cleaner (part time)
S. Sale	- Janitor
R. Sanvido	- Tech. Interpreter (School Programmes)



SPRING PROGRAM

The Museum welcomed an additional 25 new docents to the very successful training session held in late January. This group compliments our very reliable docent group which guided a total of 4,324 children through museum programs over the fall season.



In the midst of many changes within the Museum it is business as usual for the education programs. February 6th marked the beginning of the familiar yellow school buses carrying a cargo of eager faces, all anxious to learn about the Museum, the history we represent and what it looks like inside those high gates? The school programs are scheduled to run through to the end of May, 1980.

June will again offer the "Teach-Lead Visits" to the Museum, and while these are not structured to use docents, all school docents are invited to continue their interest in assisting with the groups that come on this alternate visit.

Bobbin lace making classes will be offered during March and April; a special Monday evening course is being offered to mother and daughter (min. age-6 yrs.) teams to learn this "forgotten art." A new two-part adult education course "Herbs and Appetites" will be offered in May and October. This will help students identify, grow and use herbs for cooking. A Log Cabin Building course is planned to be held in July. For further information on any of these programs please call 294-1232. A preview exhibition of the Arts and Science Center will be held in the Centennial Museum Feb. 15th through to May 19th. Please call 736-7736 for further information.

SCHEDULE OF HOURS OPEN TO PUBLIC

Heritage Village will be open to the public on Sundays and holidays during the months of April, May, October and November. Full schedule will commence on May Statutory holiday (May 19) through to Thanksgiving (Oct. 13). Heritage Village will be CLOSED ON FRIDAYS AND SATURDAYS until further notice. Please phone 294-1232 if you require further information.

ADMISSION

- Adults.....\$1.50
- Sr. Citizens.....75
- Children (6-13)....75
- Under 6 yrs.....FREE



NOTE: C.P.M.A. members admitted free - present membership card.

More people should learn to tell their dollars where to go instead of asking them where they went.

FROM VOLUNTEER CO-ORDINATOR APRIL JONES

Heritage Christmas 1979 was one of the biggest challenges I have faced since commencing my duties as Volunteer Co-ordinator. Fortunately, the volunteers really pitched in and did a wonderful job. Twenty volunteers came in to decorate the Village before the Christmas opening, and made the Village look as pretty as a picture. We had an excellent turnout for the Heritage Christmas preview with all the staff members on hand to serve the volunteers and their families and to show their appreciation for all their hard work and talent. Speaking of talent, the Heritage Village Volunteers' Sewing Circle did a marvelous job with costumes and Christmas gift items for sale in the Gift Shop. This is definitely going to be an ongoing activity with lots of scope to include volunteers in learning new crafts as well as making costumes for Spring and Summer.

One of our "fun" features was a very successful Bake Sale of cakes and cookies at Christmas. I am planning on having more sales and will keep everyone informed of my plans.

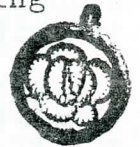
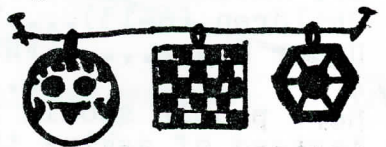
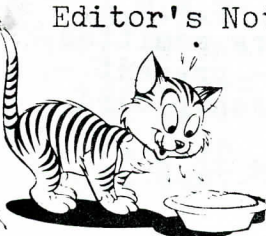
THE GIFT SHOP

Greetings from the new Gift Shop Committee. We are already hard at work on many plans to improve the gift shop this year - including a grand re-opening for Easter Sunday.

This year we hope to have many new items for sale - especially crafts made by local craftsmen. We will have items to please the whole family. Come in and see our cut-out books and game books designed specially for the Village by a local artist. We will have an old favorite item for sale - hand made soap - wrapped in beautiful new wrappers printed in our own print shop. Of special interest will be items made by volunteers; quilts, aprons, tea-cosies, pot-holders, shopping bags and many other interesting items.

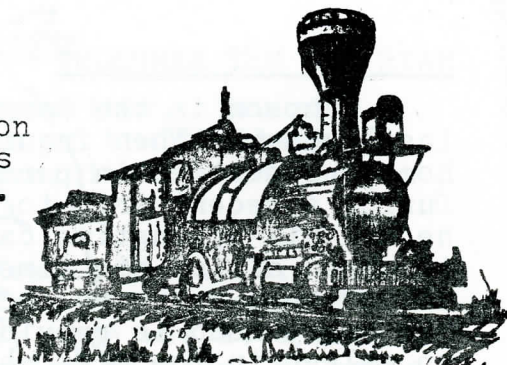
Most of all we plan to make the gift shop a happy place for you to come in and browse. An old-fashioned welcome awaits you. Do drop in.

.....
Editor's Note: An appreciative "thank-you" to all who contributed to and assisted in the production of this issue of the Villager.



BURNABY CENTRAL RAILWAY

1980 promises to be the best season ever for the Burnaby Central Railway as we go into our sixth year of operation. Over 140,000 passenger journeys have so far been made and the B.C. Society of Model Engineers who built and operate the railway are making sure they have plenty of motive power to handle the crowds in the future.



The B.C.S.M.E. now own three steam locomotives and one electric which have either been built by members or rebuilt from old worn out models which were built in the 1930's. In addition many members are now completing models that were started four or five years ago and these will add interest to our railway.

Many years of effort are needed to construct a live steam locomotive and most begin with a set of prototype drawings which they alter to the scale they are building in. Our ground level track scale is $1\frac{1}{2}$ inches representing 1 foot, or $1/8$ of full size. The raised track has many gauges for locomotives of $1/12$, $1/16$ or $1/24$ of full size.

The next step in construction is to make wooden patterns and take them to a foundry to get iron castings. Wheels, cylinders, domes, chimneys, sideframes, etc. are usually made this way. The other parts are cut out, filed, ground, welded and machined out of whatever steel can be obtained; often scrap metal. Boilers are usually all copper and these are silver-soldered to make an extremely safe, efficient and long lasting means of heating the water to steam. These boilers can last from fifty to one hundred years as corrosion isn't a problem as with steel boilers.

Finally, the builder gets all the parts together, puts the sheet metal on the locomotive, paints and letters it and brings it to the track for its first run. It is an immensely satisfying feeling to see one's own engine pull its first load of admiring passengers out of the station and up the grade to the tunnel. This is why there are so many take up this hobby for life.

We have over one hundred and thirty members and we welcome anyone who would like to enjoy our hobby with us, whether it is to build or help us run the railway. All it takes is an enquiry at the Burnaby Central Railway Station. Come and join us.

HAVE YOU MET SAMPSON?

by Joan Harbord-Harbord

Sampson is the large grey tabby cat who adopted us late last summer. When inquiries failed to discover his former home, he settled in permanently and is now "the Village Cat." During a recent trip to the veterinary to treat an injured eye, he had his springtime calling-card altered, so now is content to spend all of his time in the village life. He has his own comfortable quarters for nighttime or inclement weather where his every need is provided for. You may find Sampson curled up asleep in the gift shop; accompanying Fred or Steve on their rounds; calling at the Ice Cream Parlour for a saucer of milk; or simply sitting on top of one of the barrels outside the shops surveying his domain and receiving the attentions of his devoted admirers. Truly, he lives the life of Riley!

If you want to know where something in the Village is, just ask Sampson.

THE LOGGING EQUIPMENT DISPLAYS

by Bill Sutherland

We at the steam end of the Village are looking forward to operating the donkey engine and the other four engines during 1980. We hope that the main busy season will permit the operation of these relics of the past for a greater number of hours than was possible in 1979.

We do have one problem. We always seem to be running out of wood to fire up the boilers. The fire box of the donkey engine is quite large. It has two hundred and fifty tubes which are two inches in diameter and seven feet long, so it takes quite a bit of heat to raise a head of steam to operate the steam engines.

The engine on the donkey is quite powerful. It is capable of dragging itself up the side of a mountain to a new location which is to be logged off. The stationary engines were used to run the machines in the old fashioned saw mills around the turn of the century. The engine was usually mounted on the ground floor with a line-shaft running the mill on the main floor. Belts ran from this shaft to the edger machine, reef saw and cutoff saws. Sometimes the log haul which brought the logs out of the water into the sawmill were driven from the line-shaft.

.....

Thank you, Bill. On a number of occasions I have been informed that the working displays of logging equipment are "fabulous" and "well worth seeing."

SAGA OF AN AGED TYPEWRITER

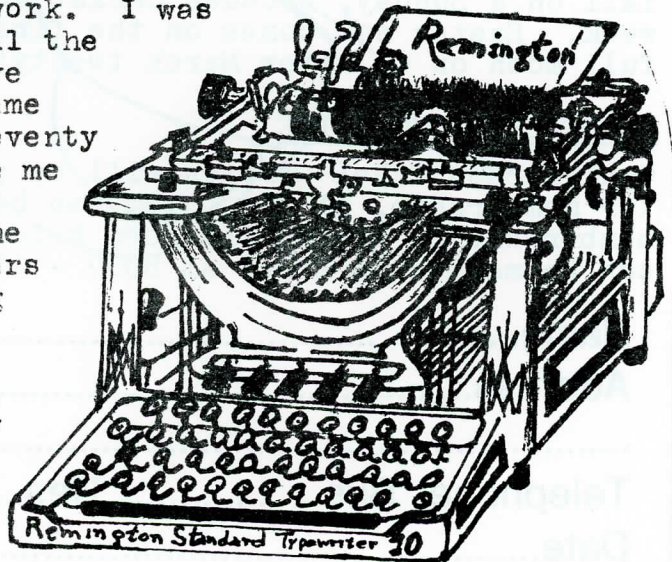
I am a Remington Standard No. 10 typewriter. You all know me. You have read my copy in issues of the "Villager." I am situated in Burnaby although this municipality has not always been my home. I have travelled.

It was in the year 1910 at Ilian, New York, U.S.A., that I first became functional and soon afterwards found myself travelling to Canada. My first temporary home was at a shop in Calgary, Alberta. I was a very expensive machine; my price tag was \$50.00.

Eventually I found myself belonging to a young man who soon took me to Vancouver Island. Victoria, Nanaimo, Port Alberni; I knew them all when I was young. I liked it best when I resided at the Empress Hotel. Those were gala times before World War I. Ladies dressed in long, glorious dresses and beautiful hats. Gentlemen sported spats, high tight colored shirts and natty hats. Ladies now wear longish skirts, and skimpy hats and the men too often wear open shirts, no ties and no hats. Times change!

World War I altered many things for me. Three times my young owner tried to enlist in the service of his country but each time he was rejected because of a vision difficulty. He could see well enough to use me! Then came the lonely stored away years for me after I had travelled back to the prairie provinces. In time there were three young children who one by one learned how well I could work. I was busy again for many years until the period of World War II. I have stayed with members of this same family for almost all of my seventy years. My original owner gave me to the youngest of his three children who in turn brought me to Burnaby some twentyfive years ago. Since then another young generation has kept me busy.

This may be my last copy. Although I am still working my owner recently replaced me, albeit reluctantly, with a new typewriter. (Cont'd p.8)



"Can't type fast enough." "Needs cleaning - no one will do it." "Some letters are crooked." "Lines are uneven." Bunk. I was built to LAST. I will be around when that new electrical machine is not worth repairing. I can do anything it can do... well...almost. I do not have a correction key nor any repeating keys, but it cannot write £, ¢, ¼ or ¾ or duplicate several other functions I possess. Calls itself a portable but it weighs almost as much as I do (I'm no lightweight) and many of its mechanisms are similar to mine.

Mine has been a fortunate existence. I can still work.... without a cord or an electrical outlet! I know that my family will never part with me. Maybe, just maybe, I will someday 'click', 'click' again for Heritage Village. I hope so. Retired and a little sad, for me now time may hold only rest and silence.....

Editor's Note: Typed by Remington 10, Serial No. 251640.
A factual history.

EASTER QUIZ: Do you know from whence the word "Easter" was derived; why and how the date is picked each year?

ANSWER: The word "Easter" comes from the Anglo-Saxon "Eostre" Goddess of Light, or Spring, whose festival was celebrated in April. The name of the festival in German, French, Italian and other languages is taken from the Hebrew "Pesach," meaning "Passover." The first Christians wanted to connect Easter with the Passover, regardless of the day; while others wanted it to fall on a Sunday, because Christ arose on the first day of the week. Easter now comes on the first Sunday after the first full moon on or after March twentyfirst.

MEMBERSHIP COMMITTEE

Chairperson Ethel Derrick will be pleased to receive your renewal for membership, if due. You can help increase our C.P.M.A. membership by giving the form below to a friend; memberships can be mailed to Ethel at 8027 - 17th Ave., Burnaby, V3N 1M5

Name.....

Address.....

Telephone: Bus.....Res.....

Date.....

Memberships

- Single 5.00
- Student 2.00
- Senior Citizen 2.00
- Associate 10.00
- Life 50.00