

Robert Burnaby 1828-1878

November 30, 1978 marks the 150th anniversary of Robert Burnaby's birth. Burnaby was a British Columbia pioneer of 1858 who had an outstanding career for 13 years during the Colony's formative years. Although he never owned land or lived in the municipality that later adopted his name, he was intimately connected with the opening up of Burnaby and surrounding areas. Some people feel that he was not connected sufficiently with the municipality to warrant it bearing his name. But if this were so, one might say the same thing of Captain Vancouver and Queen Victoria, and the two cities that today perpetuate their names.

With the news of the Fraser River Gold Rush in 1858 Robert Burnaby left his position with the Customs Office in London and headed for the new Eldorado. In partnership with a man named Henderson (who remained in London) Burnaby had the intention not to mine, but to make investments and establish other lucrative businesses.

Robert Burnaby's first venture in the new colony was as Colonel Richard Clement Moody's Private Secretary. In his capacity as head of the Royal Engineers and Commissioner of Lands, Moody was involved with most aspects of the Colony's early development. Burnaby assisted with the laying out of Queensborough (New Westminster) and with the initial sale of lots there. Along with many other notables of the day, Burnaby himself purchased two lots for speculation. One was located at the future corner of 8th and Columbia Streets (now Wosk's) and the other was in present-day Hume Park on the bank of the Brunette River.

In August, 1859 Burnaby was laid off in what must have been one of British Columbia's first government cutbacks. Undaunted, he set about exploring Burrard Inlet in company with Walter Moberly; they became the first Europeans to explore the shore of the entire Inlet - including that part now forming the northern boundary of the Municipality that bears his name. It was during this period that Burnaby, also in cooperation with Moberly, looked into the possibility of mining coal in Coal Harbour, now in downtown Vancouver.

Burnaby took up residence in Victoria where he established himself as a commission merchant, real estate broker, and capitalist. He entered politics and was elected from the riding of Esquimalt to the Legislative Assembly of Vancouver Island.

Robert Burnaby was very active in a variety of community affairs. He was noted personally for his wit and fine singing voice, and he participated and took leading roles in choral and dramatic groups in Victoria. He founded the first Masonic Lodge in the colony and subsequently became British Columbia's first Grand Master. He had among his friends most of the leading men of the day, including Governor Douglas. During his sojourn in British Columbia Robert Burnaby travelled three times back to his native England. On these trips he was active in promoting the future of the Pacific colonies with the authorities in London. His third trip was his last, for he never returned to the West Coast. He had been stricken with a paralysis and his doctors and friends had advised him to return to England, where he died in January 1878.



Robert Burnaby

The Steam and Sawmill Collection

In January of 1977 Heritage Village acquired a collection of early logging and sawmilling equipment from Andy Anderson of Powell River. Anderson, who died in 1977 at the age of 87, was one of the most colourful figures in the province's lumber industry. He spent most of his adult life in the Powell River area, and from 1932 to 1960 operated a steam powered sawmill on Powell Lake.



Andy Anderson's steam donkey on a log float in Powell Lake

The principle item in the Anderson collection is a 10 x 15 steam donkey manufactured in 1918 by the Vancouver Engineering Works. An assortment of blocks and fairleaders by Opsal and the Washington Iron Works accompanies the donkey.

The collection also includes a near-complete set of sawmill equipment: a log carriage manufactured early in this century by the William Hamilton Company of Peterborough; a Yates 341 vertical band resaw made in Hamilton in 1918; a small circular resaw built by the American Wood Working Machinery Company of Aurora, Illinois c.1910; a three saw shift edger (a rare local manufacture, made by Heaps of New Westminster c.1914); an Allis-Chalmers P.C. edger (made in Milwaukee and bearing a 1900 patent date); a Berlin Machine works planer/matcher/moulder, manufactured in Hamilton in 1910; and a Ross model 11 lumber carrier, made at Benton Harbour, Michigan in the early 1920's.

Heritage Village has also obtained Anderson's steam machines. All of these date from the first quarter of the twentieth century. Three are vertical engines. One was made by Martin Maker of Toronto, another by the Climax Company, while the third bears no identifying inscription. Anderson had five horizontal engines in addition to these. The small Sumner engine (made by the Sumner Iron Works of Everett, Washington) is a twin-feed engine, but all the

others are single cylinder models. The largest was built by E. Leonard & Sons of London, Ontario. The others were manufactured by the Houston, Stanwood & Gamble Company of Cincinnati, the Atlas Engine Works of Indianapolis, and the Waterous Company of Brantford.

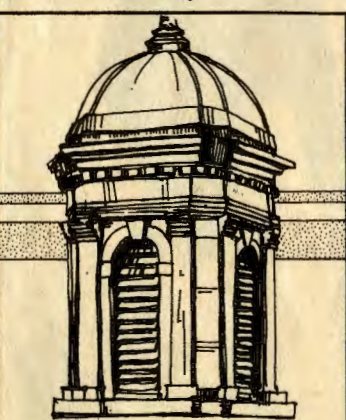
The Anderson collection also features machine-shop equipment: a power grinder and a power hacksaw made by the A.R. Williams Company; a Letson & Burpee saw gummer (made in Vancouver); and an M-62 gap lathe (manufactured in Dundas, Ontario by John Bertram & Sons). Much of this machinery was originally powered by a Ruston-Hornsby kerosene engine, (manufactured in London, England).

Several pumps complete the equipment: a Buffalo duplex pump (made in Tonawanda, New York), two duplex pumps built by Fairbanks-Morse of Chicago, and a Fairbanks-Morse typhoon pump (accompanied by a kerosene engine manufactured by the same company).

Anderson's machinery is now being restored at Heritage Village. It is hoped that a working sawmill will be established as a major display within the next five years. At present, no comparable mill facility exists anywhere in Canada. Through its acquisition and restoration of Andy Anderson's sawmill, Heritage Village is preserving an aspect of British Columbia's lumbering history that would otherwise be lost.

Welcome to Heritage Village Museum! It is a replica settlement which faithfully depicts the pattern of life in numerous small communities throughout British Columbia's lower mainland between 1890 and 1925. Central to the life of the settlement is the electric Interurban Tram. In 1891 the first tram made the run from Vancouver to New Westminster, passing through Burnaby. This first line was named the Central Park Line after Burnaby's largest park. It and four other lines in the Greater Vancouver area which followed opened up large suburban and rural areas for commuters and settlers. What you see at Heritage Village represents what thousands of travellers on the interurban trams would have seen as they journeyed through Burnaby, and surrounding municipalities in the course of their daily lives. From the Vancouver terminal

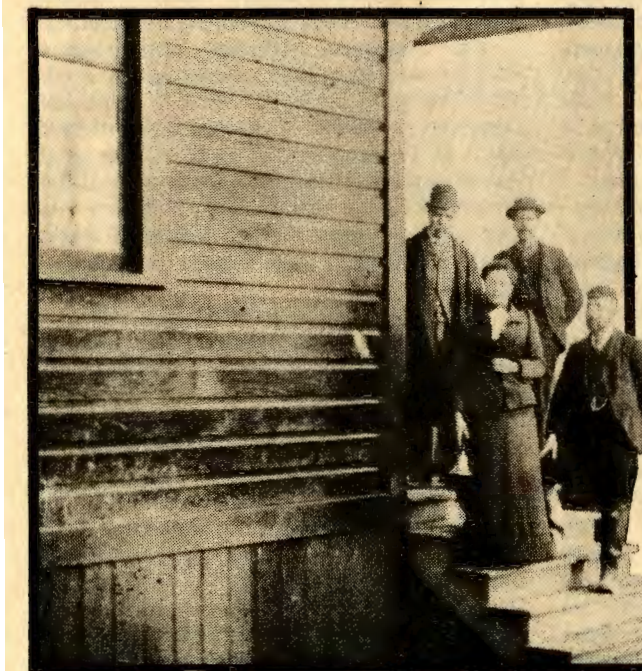
on Carrall Street near Chinatown, through residential areas, forest, farmland, isolated homesteads, clusters of stores and businesses that grew up around the tram stations (such as the McKay or Jubilee stations in Burnaby) into downtown New Westminster — all this is found at Heritage Village. Some of the exhibits will remind you of the "good old days"; others will show you that poverty, pollution, crime and other negative factors were also a part of our heritage. We hope you find all of it interesting and informative.



The Cupola from the Burnaby Municipal Hall, circa 1911

The **ORIENTATION CENTRE** (1) (formerly the Vorce tram station) was originally built in 1911 to serve as a station on the Burnaby Lake Interurban Line. The small structure now serves as a waiting area and orientation centre for visitors to Heritage Village.

ELWORTH HOUSE (2) was built in 1920 by Edwin Bateman and named after his birthplace in England. Mr. Bateman, a CPR employee, enjoyed the "country life" and moved to Elworth as he planned for his retirement. No furnishings inside are original to the house, but they do represent the Bateman's lifestyle up to 1925.



Burnaby's first School, circa 1894. Miss Lepage (teacher) and trustees stand on steps.

The one-room **SCHOOL HOUSE** (3) is typical of those of the 1890's in rural areas. An authentic signature of H.B. MacLean, who developed the famous "MacLean Style of Writing", is on the side blackboard.

The **CUPOLA** (4) which adorned the top of Burnaby's brick municipal hall built in 1911 (now demolished) is all that remains of that once imposing structure.

In **FINLAYSON'S PHARMACY** (5) window hang the green and red globes symbolizing early drugstores, just as at the **DOMINION BARBER SHOP** (6) where the red and white spiral pole announces the barber's trade. The Village Trading Company's **GIFT SHOP** (7) contains a wide range of merchandise on sale, depicting the era and displays of the museum. Mr. Goodridge's **GENERAL STORE** (8) with its false wooden front is typical of general stores across North America at the turn-of-the-century. Groceries, drygoods, and household furnishings are all to be found displayed inside.

The **DEER LAKE AUTO COMPANY** (9) represents a garage of 1925. The tall gravity-feed gas pump and the late-model Model T Ford were familiar to early motorists.

The **DENTIST** (10) was needed in every community. This office contains a portable chair and equipment used prior to 1920 by a dentist who travelled by the Union Steamships to serve remote northern B.C. coastal communities.

OLD CURLY (11) is the oldest surviving steam locomotive in B.C. It was used during the 1880's to construct the Fraser Canyon section of the CPR.



Andy Anderson 1890-1977

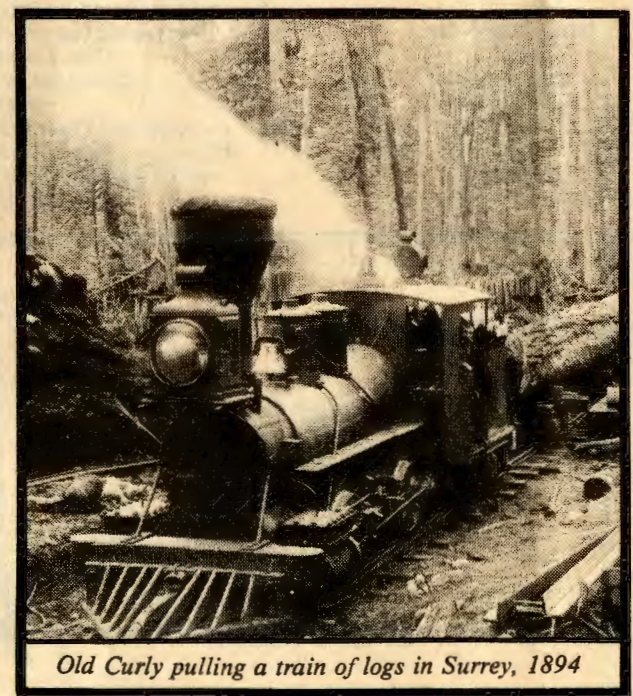
The Village **BLACK SMITH** (12) did much more than shoe horses. Many fine examples of the blacksmith's art are shown in this operational shop.

The 1909 vintage Ruston - Hornsby **STEAM ROLLER** (13) was a common sight for many years in New Westminster. It is still in perfect working order. Most of the vintage **SAWMILL MACHINERY** (14) came from Andy Anderson's Lakeview Lumber Company mill in Powell River. All items on display will be restored and those that already have been are demonstrated regularly. Lumbering and sawmilling were important local industries in Burnaby. The 1918 **STEAM DONKEY** (15) built by Vancouver Engineering Works was the motive power for much of Andy Anderson's logging operations in the Powell River area.

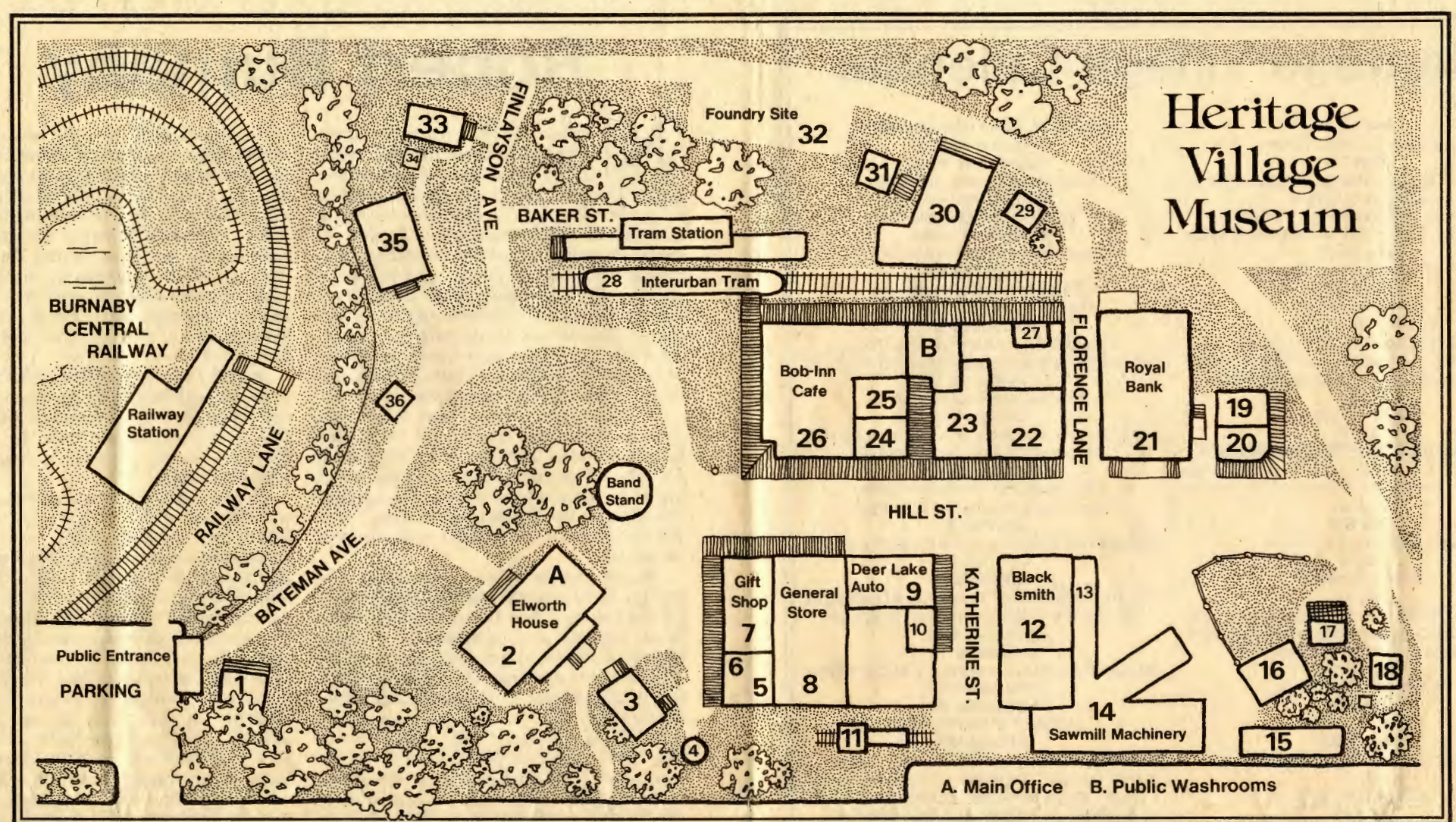
The replica hand-built **LOG CABIN** (16) represents the hundreds of early settlers in B.C. who lived in similar dwellings, even well up into the twentieth century. A chicken coop (17) located beside the cabin was a common site in the early communities.

The **Ofuro** or **JAPANESE BATH HOUSE** (18) was built to commemorate the centennial of the first Japanese immigrant to Canada in 1877. Such baths were common in the Japanese farming, fishing, and lumbering settlements of B.C.

A **SURVEYOR'S OFFICE** (19) such as Hill & Burnett, B.C. Land Surveyors was essential in any new area settlement. Most of the instruments and maps were used by G.K. Burnett, a Burnaby resident who worked extensively throughout the Lower Mainland for almost



Old Curly pulling a train of logs in Surrey, 1894



Heritage Village Museum

50 years. Next to the surveyor, the **REAL ESTATE AGENT** (20) whose office is represented by the Dow, Fraser & Co. was essential to early suburban growth. Examples of early Burnaby homes and land prices are shown in the windows and on the interior walls.

The **ROYAL BANK BUILDING** (21) represents a typical suburban bank of the early 1920's, such as was Burnaby's first bank that opened in 1921 on Kingsway. The building displayed here was first built to serve as a bank in Britannia Beach.

The Village News **PRINT SHOP** (22) is a fully operational establishment where much of the Village's own work is done. The **Way Sang Yuen Wat Kee & Co.** is a **CHINESE HERBALIST'S SHOP** (23) originally founded in Victoria soon after 1900. The Lower Mainland had a large Chinese population, most of whom would have been very familiar with this type of natural medicine - traditional in their homeland. The carved cabinetry and sets of rosewood drawers originated in Hong Kong.

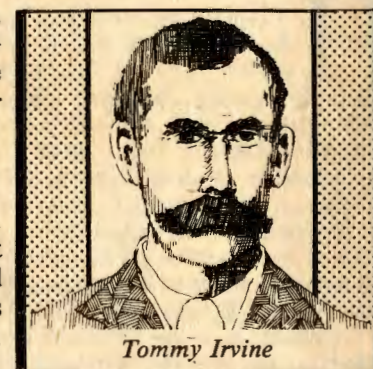
Miss Gilchrist's **DRESS AND MILLINERY SHOP** (24) has everything for the discriminating lady of the early twentieth century.

An **OPTOMETRIST'S OFFICE** (25), darkened except for the illuminated eye chart, shows the equipment used for testing eyes before 1920.

The Bob-Inn Cafe is an **ICE CREAM PARLOUR** (26) complete with bentwood chairs, reproduction Tiffany lamps and slow-moving ceiling fans. Snacks are available at the marble topped counter, or from the take-out window.

The **PHOTOGRAPHER'S GALLERY** (27) was common in most early communities. This one displays many of the cameras,

photographs and accessories that were familiar to Lower Mainland residents. The **INTERURBAN TRAM** (28) No.1223 from B.C. Electric Co.'s fleet is the only restored one in B.C. It was built in 1913 in St. Louis, Missouri.



Tommy Irvine

Mr. Lubbock's **BLACKSMITH SHOP** (29) was used until 1977, and Mr. Whitechurch's **HARDWARE STORE** (30) was a well-known Burnaby business until 1973. The **PUBLIC SCALE HOUSE** (31) with its Fairbanks scale inside was a common sight beside many early main roads. The scale was used originally in a Nanaimo colliery.

Heritage Village will eventually incorporate a working **FOUNDRY DISPLAY** (32). Foundry equipment is exhibited in this temporary location now to represent the importance of this industry to all early communities in the area.

Tommy Irvin built his **HOUSE** (33) with the help of a friend in 1911 in Burnaby. A life-long bachelor, he kept a neat house and garden, loved to smoke his pipe, play cribbage with his friends and listen to Al Jolson records on his hand-cranked gramophone. A two-holer (34) was a luxury in any early community.

The **VILLAGE CHURCH** (35) is a reconstruction based on two Burnaby churches built near Central Park around 1900. Most interior fittings of this interdenominational church are authentic church pieces. It is used regularly for weddings and special ceremonies.

The granite **WAR MEMORIAL FOUNTAIN** (36) was originally erected in front of Burnaby's former Municipal Hall on Kingsway.

Operating Times:

OPEN DAILY ALL YEAR (except Monday, unless Monday is a holiday; Christmas Day and all January).

JUNE 1 TO LABOUR DAY AND WEEK-ENDS ALL YEAR: (paid admission) All displays open and full operations.

Weekdays, fall winter and spring: (free admission) grounds, gardens, interpretation centre, washrooms and outdoor displays are open only.

HOURS:

Easter to Thanksgiving: 11:30 - 5:30

Thanksgiving to Easter: 1:00 pm to 5:00 pm

In December the Village is open daily (except Dec. 25) for special Christmas events.

ADMISSION:

Over 12 & Adults \$1.00

Children 6-12 50¢

Children under 6 FREE

Over 65 50¢

INFORMATION: 294-1231

Heritage Village Museum

4900 Deer Lake Avenue

Burnaby, B.C. V5G 3T6

The Burnaby Central Railway is operated by the B.C. Society of Model Engineers. It operates during the same hours as Heritage Village.

Heritage Village Museum is operated by the CENTURY PARK MUSEUM ASSOCIATION. The CPMA is a non-profit society registered under British Columbia's Societies Act and is a registered Canadian Charitable Organization.

Donations of money to the CPMA are income tax deductible and receipts are issued for this purpose. All donations are gratefully received and should be mailed to the Treasurer, Century Park Museum Association, 4900 Deer Lake Avenue, Burnaby B.C. V5G 3T6

Membership in the CPMA is open to all. Membership entitles one to attend and vote at all General Meetings and the Annual General Meeting of the Association, to enter Heritage Village Museum free of charge upon presentation of the membership card at the gate, and to receive the quarterly newsletter, "The Villager" and other information bulletins throughout the year.

Below, please find a membership application form. If you are interested, please complete it and return to the Membership Secretary, Century Park Museum Association, 4900 Deer Lake Avenue, Burnaby B.C. V5G 3T6

Heritage Village Calendar

June 17-18

Log Cabin Building Course

June 18

Premiere of "Village Varieties Vaudeville Show"

June 24 to July 3

BURNABY STRAWBERRY FESTIVAL

featuring lots of old-fashioned strawberry treats

June 24-25

Log Cabin Building Course

June 25

Village Varieties

July 1

DOMINION DAY CELEBRATIONS -

cake judging and auction, foot races, cross-cut saw and spike driving competitions

July 2

Village Varieties

July 6

CHILDREN'S HERITAGE PROGRAM BEGINS - (ages 6-12) Pre-register for 4 consecutive Thursdays, Fridays or Saturdays in July or August

August

July 8-9

Log Cabin Building Course

July 9

Village Varieties

July 15

Box Supper Social (in the evening until 9:00 pm) - bring a box supper and see how much it will bring at auction-entertainment

July 15-16

Blacksmithing Course

July 16

Village Varieties

July 22-23

Log Cabin Building Course

July 23

Village Varieties

July 30

Japanese Mid-summer Lantern Festival - dancing, music, food

August 5-6

Village Varieties

August 7

BC DAY

Potato Bake, Pie judging and auction,

Village Varieties

August 19-20

Blacksmithing Course

August 20

(afternoon and evening)

Barbershop Quartet Sing-off; Salmon Barbeque

August 20

Village Varieties

August 27

Village Varieties

SEPTEMBER

SCHOOL GROUPS BOOK THIS MONTH FOR TOURS UNTIL MAY, 1979

September 2-4

LABOUR DAY WEEKEND

corn roast, fiddle championships,

Village Varieties

September 9-10

Soap-making demonstrations

September 16-17

Quilting Demonstrations

September 23-24

Sauerkraut and sausage-making demonstrations

September 30-October 1

Bobbin Lace demonstrations

October 7-8

THANKSGIVING APPLE FESTIVAL

apple dolls, apple pie, apple bobbing and more

October 14-15

Rug-braiding demonstration

October 18

Bobbin Lace Class Begins (runs 8 consecutive Wednesdays until December 6)

October 28-29

HALLOWE'EN PREPARATIONS

apple bobbing, Jack o' Lanterns

October 31

Hallowe'en Party for schools (by prior booking only)

NOVEMBER

This month special celebrations will be held to honour the 150th anniversary of Robert Burnaby's birth

November 11

Remembrance Day - ceremony at the Village War Memorial

November 30

ROBERT BURNABY DAY

DECEMBER

Heritage Christmas celebrations daily all month (except December 25) old-fashioned Christmas preparations, decorations, food; carolling and traditions. Village Gift Shop introduces special Christmas stock

JANUARY

Closed all month to the public. Offices are open from 9:00 to 5:00 pm

FEBRUARY 1

Heritage Village re-opens for school programs and the general public

ALL EVENTS AND TIMES SUBJECT TO CHANGE WITHOUT NOTICE. FOR MORE INFORMATION ON THE DATES CONCERNED PLEASE CALL 294-1231

Heritage Village wishes to gratefully acknowledge financial assistance from:
The Young Canada Works Programme
The Captain Cook
Bi-centennial Committee

and the
Leon and Thea Koerner Foundation
which has helped make possible special events and educational programming throughout the year.

Application for Membership

Name.....

Address.....

Telephone: Bus.....Res.....

Date.....

Memberships

- ☐ Single 5.00
- ☐ Student 2.00
- ☐ Senior Citizen 2.00
- ☐ Associate 10.00
- ☐ Life 50.00

Heritage
Village
Museum

294-1231
4900 Deer Lake Ave.
Burnaby, B.C. V5G 3T6