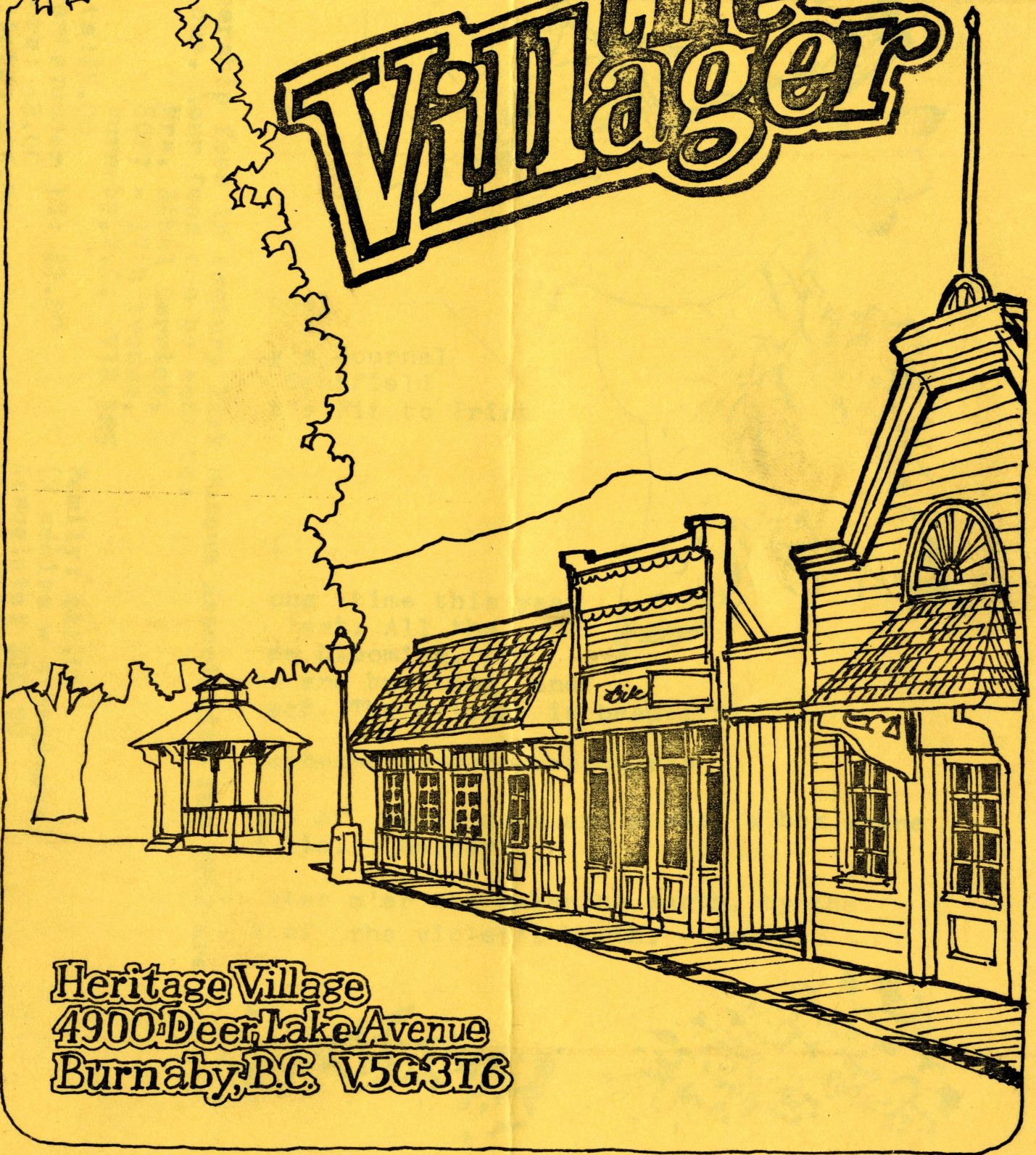


The Villager



Heritage Village
4900 Deer Lake Avenue
Burnaby, B.C. V5G 3T6

Membership fees in Century Park Museum Association for 1982 are now due. Your fees can be sent to:

Mrs. Ethel Derrick,
8027 - 17th Avenue,
Burnaby, B.C. V3N 1M5

Adults: \$5.00

Students: under 18: \$2.00

Seniors: \$2.00

Affiliate: \$25.00

Family: \$12.00

(2 adults - 3 students)

Associate: \$10.00

Life: \$100.00

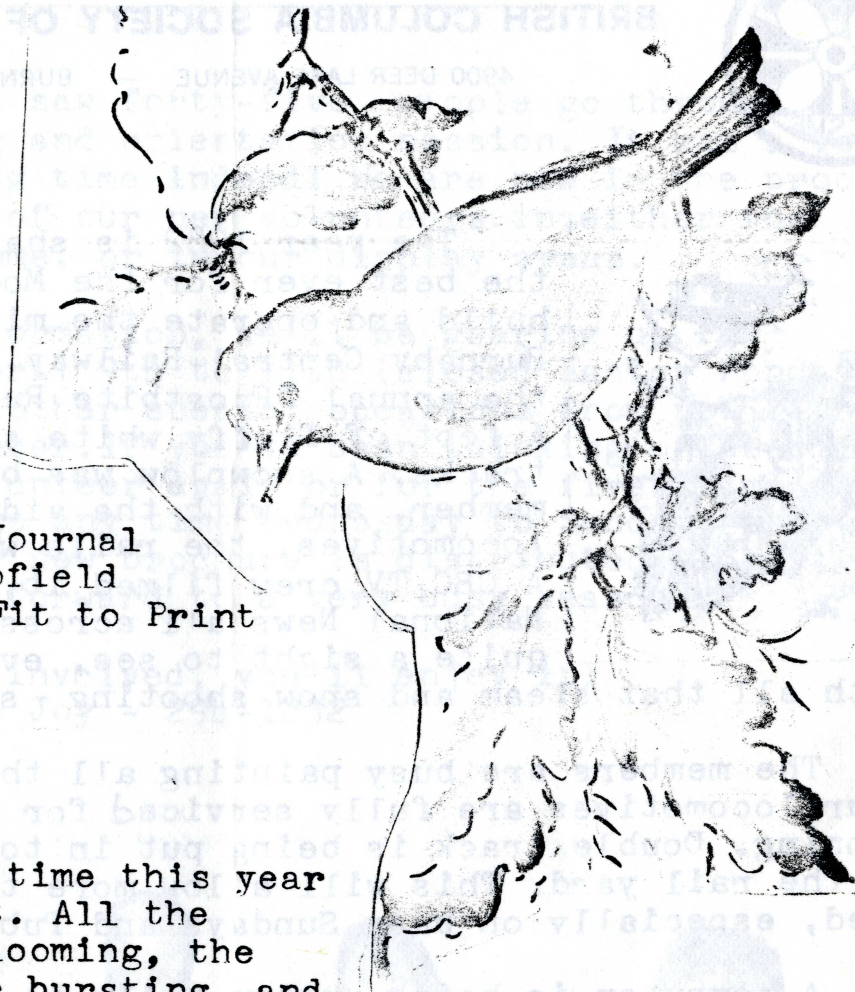
THE VILLAGER

Spring 1982

Published by:
Century Park Museum
Association

Editor:
Ethel Derrick

Contents:
News About the Model
Railway
Jottings From Joy's Journal
Notes From Peter Schofield
All the News That's Fit to Print
from Lynda

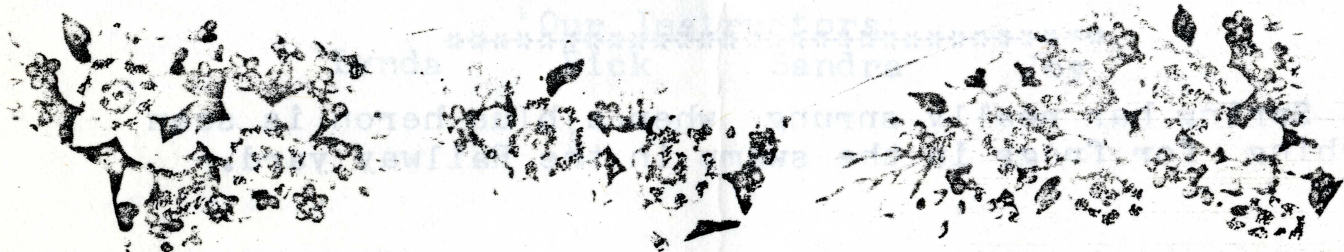


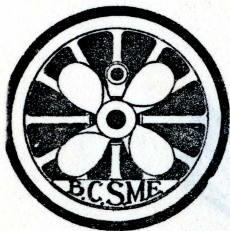
Ah! Spring!

We've waited a long time this year
but it's here at last. All the
spring flowers are blooming, the
buds on the trees are bursting, and
the robins are back. The Village is beautiful!
Come and see it!

Sweet Spring, full of sweet days and roses, a box where
sweets compacted lie. - Herbert.

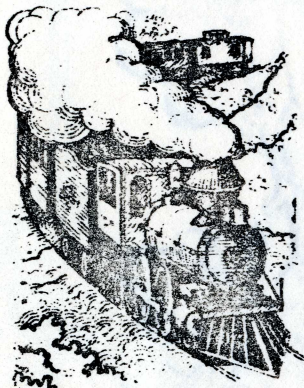
Ye may trace my step o'er the wakening earth, by the
winds which tell of the violet's birth. - Hemans





BRITISH COLUMBIA SOCIETY OF MODEL ENGINEERS

4900 DEER LAKE AVENUE — BURNABY, B.C. V5G 3T6



The year 1982 is shaping up as one of the best ever for the Model Engineers who build and operate the miniature steam Burnaby Central Railway. It started with the annual "Frostbite Run" on January 3rd. A foot of fluffy white snow lay over the tracks. A snowplow was borrowed from a member, and with the aid of three steam locomotives, the rails were soon cleared. A CBC TV crew filmed it, and ran it on the National News all across Canada. It was quite a sight to see, even in miniature, with all that steam and snow shooting skyward.

The members are busy painting all the cars, and all four locomotives are fully serviced for another year's running. Double track is being put in to ease congestion in the rail yard. This will allow more trains to be operated, especially on busy Sundays and Public Holidays.

A computer is being custom built to go in the new signal tower to control all the signals. Eventually, it will keep track of all the miles each car and loco runs so that routine maintenance will be improved. (Take note, all you full-sized railways!)

Come ride with us - bring all the family - it's still only 50¢ a passenger, thanks to all the volunteer time our members put in. If anyone would care to join our club and hobby, phone Lindsay McDonnell at 420-1778.

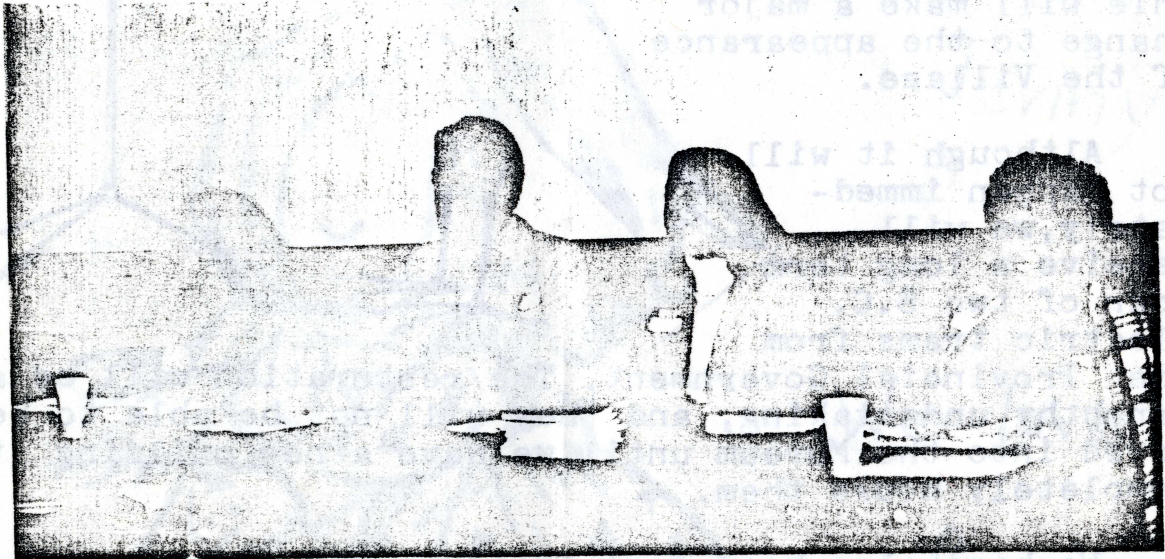
Spring has really sprung when a blue heron is seen fishing for frogs in the swamp in the Railway yard.

JOTTINGS FROM JOY'S JOURNAL

February 27th saw forty-five people go through a day long training and orientation session. It was a very full and rewarding time indeed! We are now in the process of placing many of our new volunteers in either the education programme, or in our display areas.

For your information, we'll be gearing up for Easter Weekend April 9th to 11th (closed Easter Monday, April 12th), and other special occasions from now right through to December. If you've been thinking of becoming involved as a volunteer again or for the first time, don't hesitate! Call me any time Wednesday to Sunday, and we'll get together. Our new brochure is distributed widely, and we are looking forward to a very busy season.

Come and get involved, you'll enjoy it!
Phone Joy - 294-1232



Our Instructors

Lynda

Rick

Sandra

Joy

1982 Changes

There are many changes taking place. All roads and sidewalks will be hard-surfaced to give a finish similar to the old style of macadam road surface. This will resolve the problems of thick coatings of dust in all the displays during the summer, and also the mud problems in the winter.

The construction of the new music shop and the wood sidewalks leading up to it is now almost complete, and the new cabinet shop is ready to have the display constructed inside.

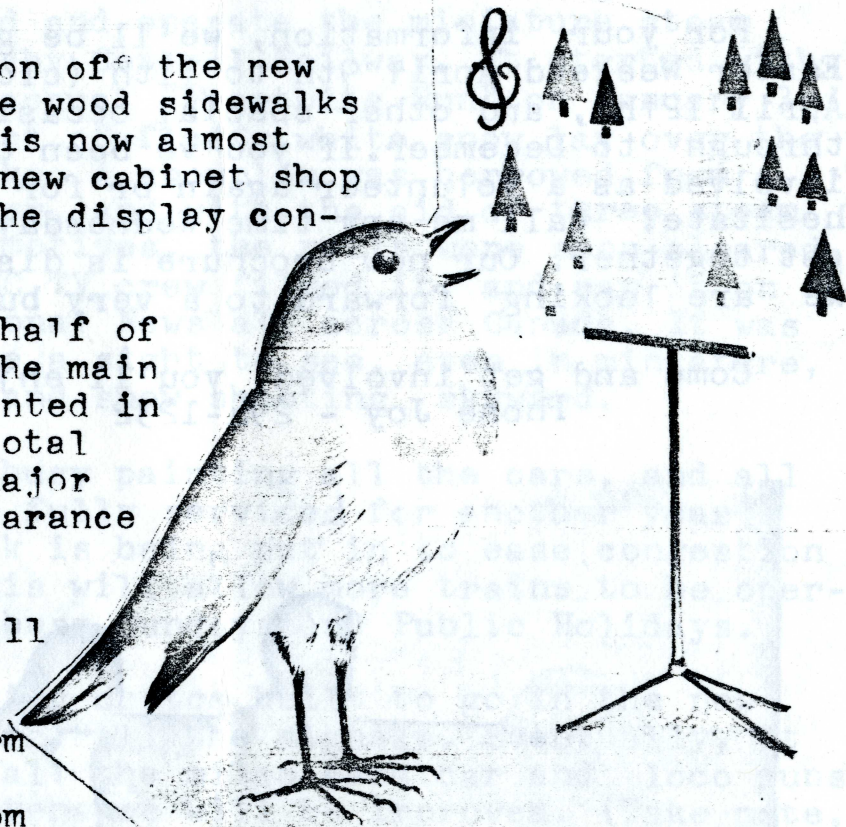
Approximately half of the buildings on the main street will be painted in early May and in total this will make a major change to the appearance of the Village.

Although it will not happen immediately, we will receive a long term loan of two B.C. Electric trams from the Provincial Government. The restoration will be a lengthy undertaking, and they will not be able to be moved into the Museum until we have a new building to completely house them.

We have also been very fortunate in receiving a grant from the Cultural Services Branch of the Provincial Government. The grant is to expand our services, particularly in the curatorial and education areas. This will allow us to complete new programmes and purchase badly needed equipment.

In a time of severe budget cuts, this income makes life a little brighter, and I trust all these things will make 1982 a successful year of operations.

R.P.Schofield



Dear Linda

Thank-you for invit ing
us. We had a gregtime
please say thank-you to
the other girls.

from
Jenny



We love our
fan mail.

6

All the News That's Fit to Print - from
The Education Department

Good Heavens! It's March already! How time flies when you're a very busy Education Department!

It all started January 4th, our first day back after the Christmas break, when the schools started phoning to book their Spring Museum visits. This, of course meant that there were pre-visit kits to assemble and distribute, cheques to be processed, follow-up packages to be prepared, confirmation cards to be filled out and forwarded, even whizzers to be made. All this on top of compiling the statistics for Heritage Christmas. However it was all worth it as our guided school programmes are now fully booked. The feedback we've been receiving from the schools has been excellent, primarily due to the interest and enthusiasm of our docents.

Speaking of docents, we held very successful "new docent" training sessions in late January. Joy has, once again, done a great job of recruiting, and I do hope you will make Fran, Pat, June, Ursula, Marge, Diane, Sue, Rick and Wynn most welcome when you see them around the Village. Our experienced docents are, of course, doing a splendid job!

We also held an all-day training session on Saturday, February 27th, and have had two lecture nights. The first was on the "History of Costume in the Lower Mainland" and the second on "The Reconstruction of the Fortress of Louisbourg". All who attended thoroughly enjoyed the presentations as both speakers were outstanding, and the material related very well to what we are all trying to attain at Heritage Village Museum. We have two lectures coming up as part of the Spring series, the first entitled



"Education in Museums", on April 21st, and the second "Languages of Landscape" on May 19th. Both lectures begin at 7 pm, are held in the Ice Cream Parlor, and are followed by wine and cheese. I hope you will all make every effort to attend as I am sure you will find them interesting and entertaining. We must ensure a good turnout so that speakers of this calibre will come to speak to us again! So mark these dates on your calendar, and please feel free to bring a friend.

We also now have our new Metalworking Program in operation. Many thanks to Bob Burkitt and Michael Green for their great interpretations as the Tinsmith and the Blacksmith respectively. We are offering specifically tailored guided programs for High School students, English as a second language students, and a very special "blind and deaf" program. We are also gearing up for our "In the Good Old Summertime" June programs, in which we hope to offer as many of the "hands on" demonstrations as possible to those students who could not get into our guided field studies.

Whew! Must close before Ethel cuts me off. I look forward to seeing you all in the coming months and would like to thank you for your general support of Heritage Village Museum's Education Department.

Cheers Lynda

MEMBERSHIP DUES - 1982

Membership fees in Century Park Museum Association for 1982 are now due. Your fees can be sent to:

Mrs. Ethel Derrick
8027 - 17th Avenue

Burnaby, B.C. V3N 1M5

Adults: \$5.00	Family: \$12.00	Affiliate:
Students:	(2 adults	\$25.00
(under 18): \$2.00	3 students)	Life: \$100.00
Seniors: \$2.00	Associate: \$10.00	

Burnaby Craft Market 1982

At the Burnaby Arts Centre in Century Park
6450 Gilpin Street
(at Canada Way)

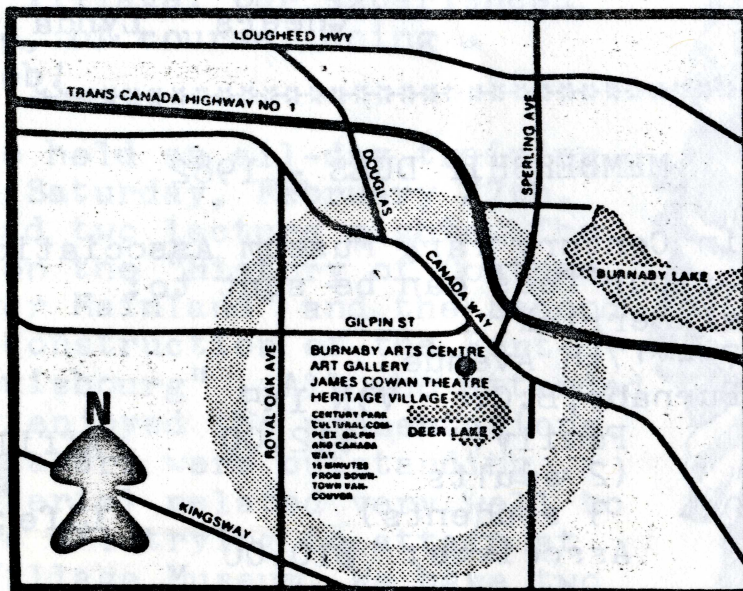
Sundays: 11 a.m. - 4 p.m.

**FREE ADMISSION
CHILDREN'S PAINT-IN**

February 7
March 7
April 4 and 18
May 2 and 16
June 6 and 20
July 4 and 18
Summer Festival:
July 30 to August 2
inclusive

August 15
September 5 and 19
October 3 and 17
November 7, 14, and 21
and the annual
Christmas Craft Market
December 5 to 12 inclusive.
(special weekday hours)

1983 Markets: February 6, March 6, and from April,
1st and 3rd Sunday of each month.



Sponsored by the Burnaby Arts Council
298-7322