

Beautiful Burnaby

British Columbia

Wilson Forster

6208 Mc Kay Ave.

463-6959



INCORPORATED A.D. 1892

PRICES REASONABLE

MATERIALS THE BEST

GILLEY BROS., LTD.

LIME, CEMENT, BRICK, PLASTER, ETC.
HOUSEHOLD AND STEAM COAL
BLACKSMITH COAL

We have the largest equipment in B. C. for handling Building Materials. Operating our own Stone Quarries, Sand and Gravel Dredges, Scows, Tugs, Bunkers, Trucks, Etc.

Phones 15 and 16

902 Columbia St. W.

NEW WESTMINSTER, B. C.

Come To Us When You Want Better Service

We carry a very large stock of Genuine Ford Parts.
We employ, as mechanics, only experienced Ford Men.
Our Shop is equipped with modern time-saving equipment.
We are constantly endeavoring to render to Ford Owners the Best Service obtainable in this territory.

FRASER MOTORS, LIMITED

524 Columbia St.

L. H. DWINNELL, Mgr.
FORD Sales and Service

Phone 565

It is the QUALITY of Old Milwaukee that the public enjoys

By asking your vendor for

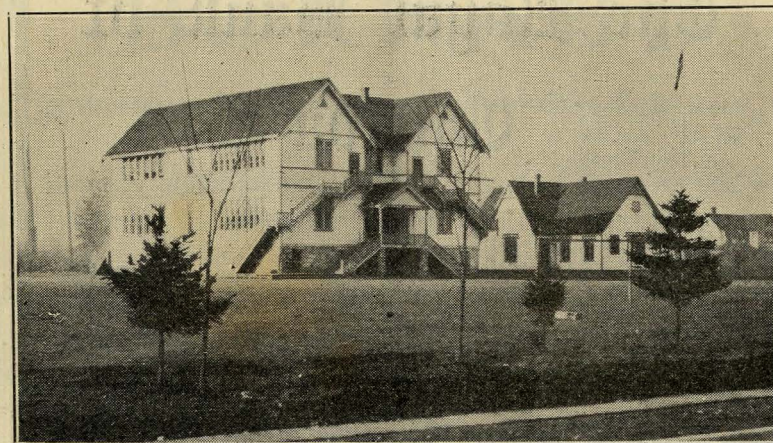
OLD MILWAUKEE

You Are Guaranteed an A 1 Quality

Westminster Brewery, Limited

This advertisement not displayed by the Liquor Control Board or the Government of British Columbia.

Municipality of Burnaby



KINGSWAY WEST SCHOOLS

Council, School Board, Police Commissioners and Officers

REEVE—A. K. McLean

COUNCILLORS

Ward 1—R. Neville; Ward 2—F. J. Gavin; Ward 3—C. Rummel
Ward 4—R. M. Edgar; Ward 5—A. E. Campbell
Ward 6—J. Murray; Ward 7—H. Engberg

SCHOOL BOARD TRUSTEES

J. P. Dickson; H. M. M. Harper; R. Baxter; H. W. Swann
G. A. Grant; W. H. Wood, Secretary

POLICE COMMISSIONERS

Reeve A. K. McLean, Chairman; H. S. Bate; Wm. Mathews, J. P.

OFFICERS

Clerk—A. G. Moore
Collector-Treasurer—R. Bolton
Assessor—W. P. Philips
Police Magistrate—J. Stuart Jamieson, J. P.
Chief of Police—W. J. Devitt
Solicitors—McQuarrie & Cassidy
Medical Health Officer—Dr. G. deB. Watson
Deputy Medical Health Officer—Dr. J. A. McIver
Auditor—Wm. Griffiths, Chartered Accountant

BANKERS

Royal Bank of Canada

HV.784.35.1.

The Royal Bank of Canada

Paid-up Capital	- - - - -	\$20,400,000
Reserve Fund	- - - - -	\$20,400,000

OUR service has a very practical value for you and your business.

A business connection with this Bank, which is in daily contact through its own Branches with all parts of Canada and Newfoundland, the West Indies, Central and South America, as well as with London, Paris, New York and Barcelona, will keep you in touch with world-wide financial and industrial conditions.

Savings Bank Departments at all Branches. Interest Paid to Depositors at Highest Current Rates.

New Westminster, B. C., Branch

H. P. WILSON, Manager

Branch also at McKay, B. C.
3976 Kingsway

BURNABY

Burnaby Municipality covers an area of 22,400 acres and is situated between Vancouver on the west and New Westminster on the east, bounded on the south by the North Arm of the Fraser River, and on the north by the Burrard Inlet. It has the advantage of both fresh and salt water harbor facilities embracing twelve miles of harbor front.

Every portion of the municipality is provided with modern facilities for education, transportation, water, roads, light and telephones, in a reasonably just proportion to the population and development. The policy of the Municipal Council is to extend conveniences as settlement warrants.

GOVERNMENT.

A Municipal Council of seven members and a Reeve elected annually administers the affairs of the Municipality, its policy being development, consistent with reasonable taxation and sane financing.

The figures given below show in concise and concrete form, Burnaby's Financial Position as at December 31st, 1923:

Total Indebtedness—

Non-productive:

Roads	\$904,007.16
Schools	409,013.59
Sidewalks	70,000.00
	<hr/> \$1,383,020.75

Revenue producing:

Waterworks	559,163.75
	<hr/> \$1,942,184.50

Temporary Debentures	328,000.00
Temporary Bank Loan	287,618.64
All other liabilities	117,701.28

\$2,675,504.42

THIS IS THE PLACE TO BUY YOUR MEAT

Phone Coll. 164R2

THISTLE MEAT MARKET

CORNER OF McKAY & KINGSWAY

Fish, Poultry, Butter and Eggs, Fresh and Cured Meats

Orders Called For. Prices Most Reasonable.

GUARANTEED HIGHEST QUALITY PROMPT DELIVERY

ROYAL OAK GROCERY

SERVICE AND QUALITY ALWAYS

PROMPT DELIVERY

E. J. F. AXFORD

Alta Vista P. O.

KINGSWAY

Phone Coll. 199L1

ROYAL OAK

BURNABY LUNCH

Established 6 Years

When You Visit Vancouver Dine at—

BURNABY LUNCH

Opposite C. P. R. Depot, 660 Cordova Street, West
VANCOUVER, B. C.

"You Will Feel at Home With Us"

RIDGEFIELD GARAGE

A. WELLS, Proprietor

FOR QUICK AND EFFICIENT SERVICE IN AUTO REPAIRS

Only the Best of Oils Supplied—Reasonable Charges

2656 Kingsway, Burnaby

Phone Coll. 381R1

The Home of Harmless Amusement—The Pioneer Theatre

EDISON THEATRE

Showing Daily the latest and best films. Splendid music.
Comfortable seats. Cool in summer and warm in winter.

F. L. KERR, Proprietor

652 Columbia Street

New Westminster, B. C.



RESIDENCE OF COUNCILLOR C. RUMMEL
INVERNESS AVENUE

Value Municipal Assets—

Current	\$ 403,334.77
Capital	2,899,851.85
Sinking Funds:	
Cash in Bank	\$85,941.87
Investments	29,104.53
	115,046.40
Finance	1,141,397.40
Trust	153,530.46
	<u>\$4,713,160.88</u>

Assessed Land Value—

Improved Land	\$11,222,401.00
Wild Land	1,182,710.00
	<u>\$12,405,111.00</u>
Exemptions not included in above	3,574,410.00
Improvements not included in above ..	5,379,814.00
	<u>\$ 8,954,224.00</u>

Tax Rate—

Improved Land	38 mills
Wild Land	50 mills

Population—

Estimated	13,500
-----------------	--------



The Telephone Has an Important Place in Suburban Life



TELEPHONE service gives rapid, convenient communication for business and social purposes, linking the suburban homes with each other and with the urban centres. The contact thus provided assists greatly in the life of everyday and in times of emergency it is invaluable. Telephone development in Burnaby keeps pace with the growth of the district, bringing unobtrusive yet practically indispensable facilities with which modern existence is becoming more and more closely involved.

British Columbia Telephone Co.

DEMAND

Almond's Ice Cream

Sold Everywhere

Westminster Grain Company

GRAIN, HAY, FLOUR *and* FEED
OF ALL KINDS

Delivered to all parts of Burnaby and Districts of
New Westminster



Phone 333

800 Front Street

NEW WESTMINSTER, B. C.



ANCONAS

Highest Official Canadian Records—Trap-Nested Stock
Cocks, Cockerels, Pullets, Hens, with official records for sale
at all times

Baby Chicks—Hatching Eggs in Season

See My Stock on Exhibition

Breeders of 210 Eggs and Better Only Are Used

W. H. GRANT
EDMONDS

Lamatco
3PLY COTTONWOOD VENEER PANELS

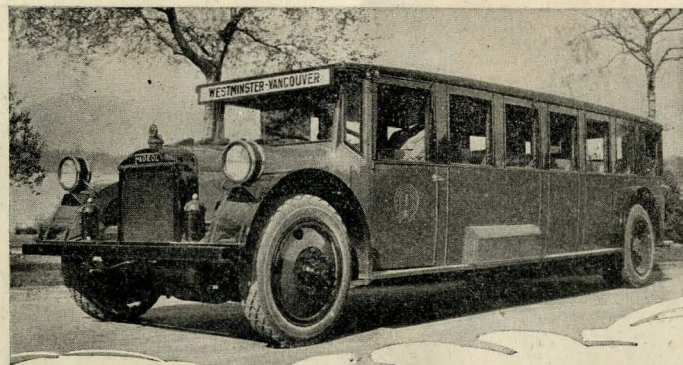
For Natural Grain Panelling and for Paint and Enamel Finishes
MADE IN THREE THICKNESSES, $\frac{1}{8}$, 3-16 AND $\frac{1}{4}$ -INCH
A size, a grade, a thickness for every purpose

A British Columbia made product for panelling Walls and Ceilings.
Will not crack or buckle and may be stained to resemble the most
expensive hardwoods with beautiful grain effect. May also be painted
or kalsomined.

Call and let us show you how easily and economically you can make
the old home young or insure the new home's youth and beauty.

Write or Phone for Full Particulars

LAMINATED MATERIALS COMPANY, LTD.
NEW WESTMINSTER, B. C.



You Know They're Safe in a Big, Blue Motorcoach

**Ride With
Us**

You can safely leave your children or any member of your family in the charge of our operators.

**Ride With
Safety**

You know they will be well looked after until they reach their destination.

Equipped with every safety device and well-lighted at night, our busses are manned by skilled drivers who will give careful attention to your comfort.

Phone—we will pick you up

New Westminster Phones:
601 2031

Vancouver Phones:
Sey. 5000 Sey. 2084

B. C. RAPID TRANSIT COMPANY, LIMITED

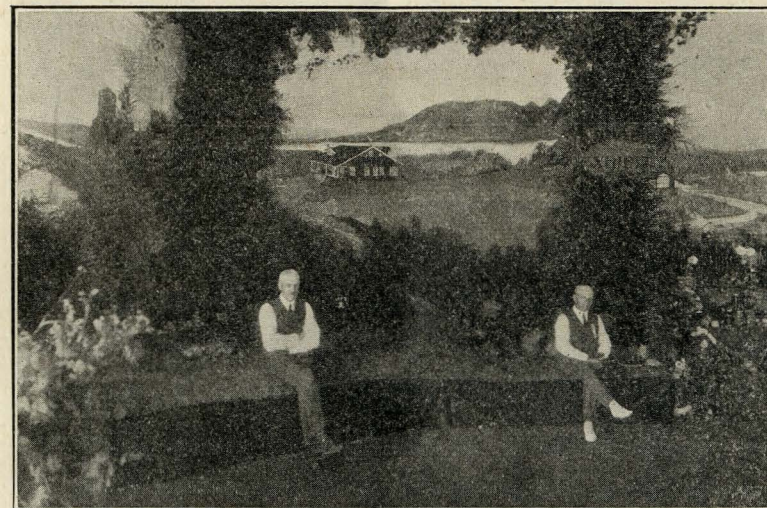
Joseph Mayers

**NANAIMO-WELLINGTON COAL
Wholesale and Retail**

Phone 105

Office 554 Front St., Foot of 6th

NEW WESTMINSTER, B. C.



BURNABY EXHIBIT AT THE PROVINCIAL EXHIBITION, 1921

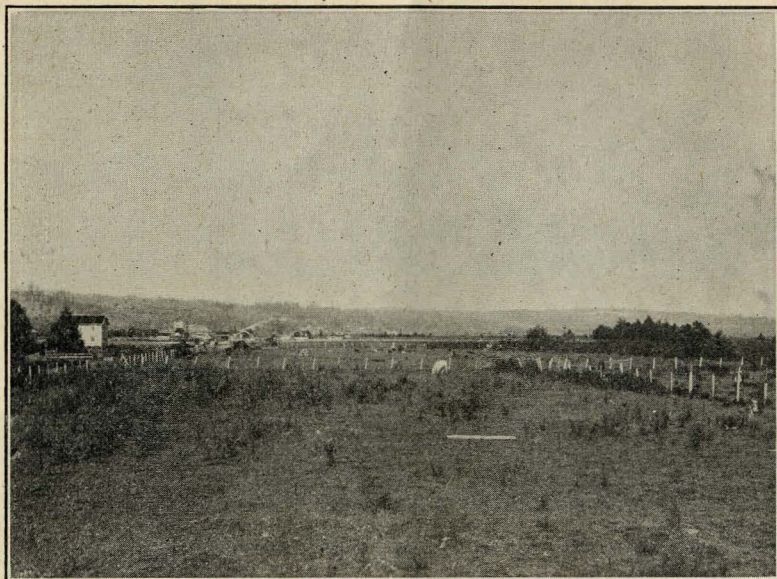
WATER SYSTEM.

Burnaby has a sufficient water supply to provide for one quarter million population, the source of the supply being the Seymour Creek, and the Water Rights of Burnaby are protected for all time. Extensions to the system are being made from time to time as settlement warrants. This water coming from glaciers, is pure and soft, and contains no lime or iron in solution.

ROADS.

Four main highways cross Burnaby. The north is being served by the Barnet Road, central Burnaby by the Douglas Road and Kingsway, and the southern part by Riverway.

Kingsway is one of the finest highways on the North American continent, and is bordered by some handsome residences. Douglas Road passes through the highly developed lake district. Barnet Road, being a continuation of Hastings Street, Vancouver, enters Burnaby at Vancouver Heights, continuing through Capitol Hill, and connects with the Dewdney Trunk Road at Port Moody, which is the main artery of travel from the prosperous farming communities along the north bank of the Fraser River. Riverway crosses along the southern slope, overlooking the Delta lands of the Fraser River, and commands one of the finest scenic views on the coast. Other main



BURNABY FARM LANDS FROM THE NORTH ARM OF THE FRASER

BUY BONDS

GOVERNMENT *and* MUNICIPAL
BONDS

**Royal Financial Corporation
Limited**

Rogers Building

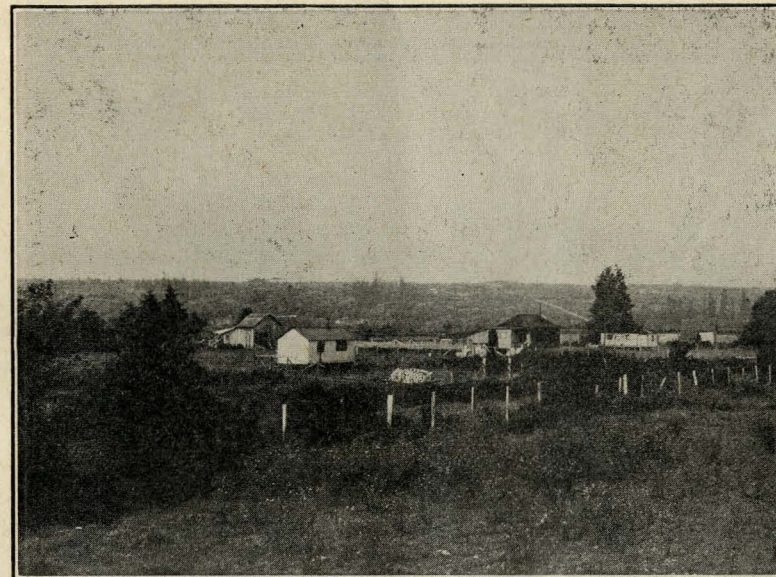
VANCOUVER, B. C.

A. P. SLADE & CO.

Wholesale Fruit and Produce Merchants

155 Water Street

Vancouver, B. C.



BURNABY FARM LANDS FROM THE NORTH ARM OF THE FRASER

roads traverse north and south, the principal ones being the North Road on the eastern boundary, and Boundary Road on the western limits of the municipality. The principal streets in the residential areas are oil surfaced, and provided with sidewalks of a permanent nature.

SOIL PRODUCTS AND MARKETS.

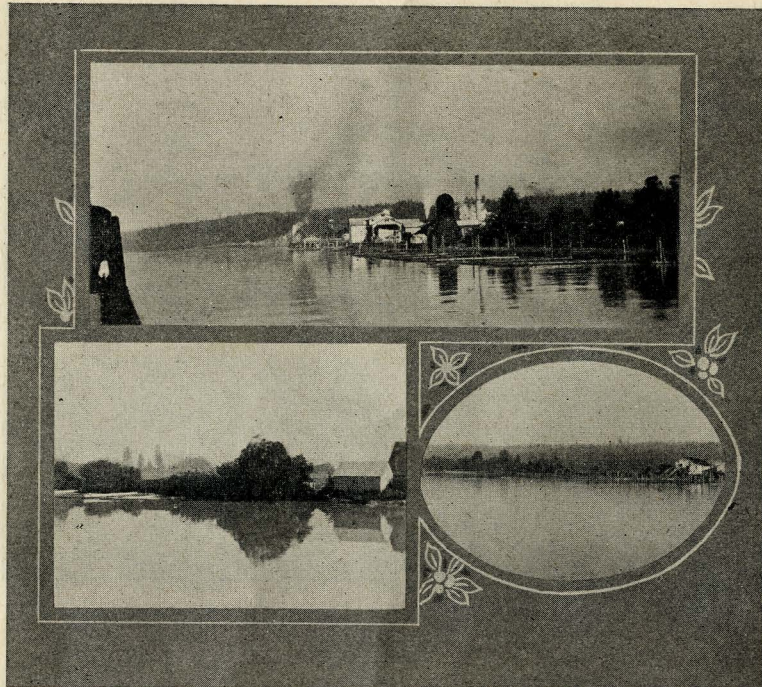
The soil of Burnaby varies from light sandy loam to a deep black rich mould. The light soils prevail along the ridges and is highly suitable for small fruits, orchards, and for poultry raising. In the Deer Lake and Burnaby Lake districts the soil is exceptionally rich, as the high producing gardens and fruit ranches amply attest. On the Delta lands between Riverway and the North Arm of the

"It's the Coffee"

**THE SAVOY
CAFE—HOTEL**

We Buy the Best and We Serve It Better—Rooms Clean
Home-like—Prices Reasonable

"COME IN JUST AS YOU ARE" A. E. Kellington, Prop.
New Westminster, British Columbia



BURNABY SHIPPING FACILITIES ON THE NORTH ARM
OF THE FRASER RIVER

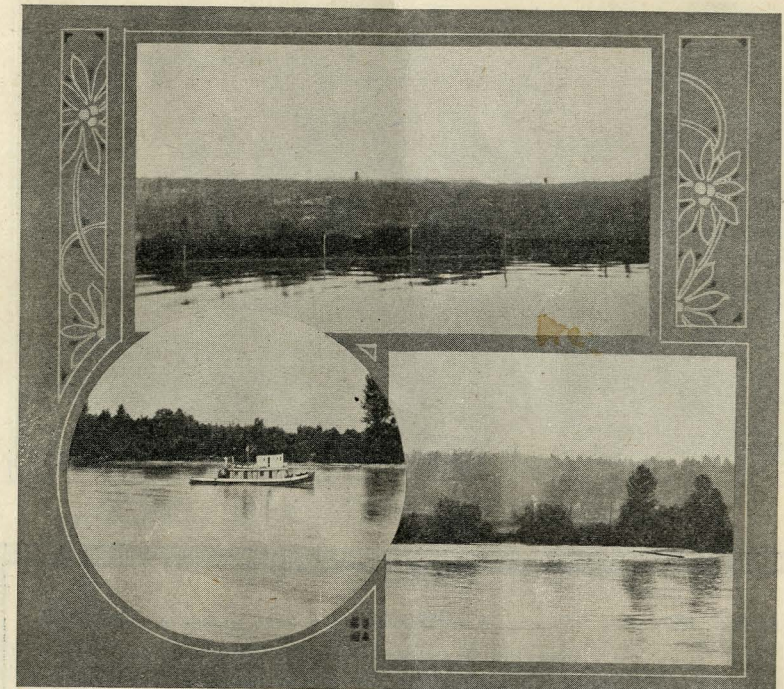
WE MANUFACTURE
Sweeping Brooms, Mops, Dusters, Bath Brushes,
Bath Sprays, Hair Brushes, and a Brush
for every use.

All brushes made in our own factory and guaranteed against
defect

Richwell Brush Mfg. Co., Ltd.

Head Office and Factory: 1068 Edmonds Street
NEW WESTMINSTER, B. C.

Branches: Vancouver, B. C.; Victoria, B. C.; Nelson, B. C.; Prince
Rupert, B. C.; Edmonton, Alta.

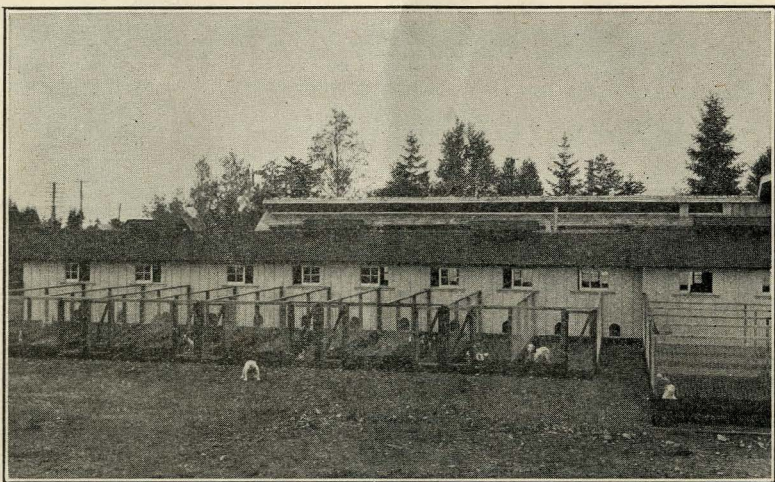


BURNABY SHIPPING FACILITIES ON THE NORTH ARM
OF THE FRASER RIVER

Fraser River are located extensive market gardens and productive dairy farms. Goats are kept in increasing numbers and provide milk for family use.

Vast quantities of strawberries, raspberries and loganberries are produced annually, and the area devoted to small fruits is steadily increasing. Apples, pears, plums, apricots, and especially cherries do exceedingly well. In garden produce, potatoes, carrots, beets, cabbage, cauliflower, kale, onions, beans, peas, celery, asparagus, and in fact every kind of temperate climate vegetables grow well, and mature, in Burnaby. Growing flowers and vegetables under glass has become an important industry, with large plants located on Kingsway and at Burnaby Lake; also on Smith Avenue, and the North Road.

With the farmers' market in New Westminster every Friday, and unlimited demand in Vancouver, quickly reached by electric tram and motor truck lines, profitable marketing is only a matter of careful packing and prompt delivery. Honey is produced in quantity, and some of the largest beekeepers of British Columbia reside in Burnaby. The abundance of blossoms and flowers in the district give reasonable assurance of good returns annually.



KINGSWAY BOARDING KENNELS, 3303 KINGSWAY

Sey. 550

—PHONES—

Coll. 467

DR. TREVELYNE E. SLEETH

CANINE AND FELINE SPECIALIST AND SURGEON

operating the

B. C. Dog and Cat Hospital

688 SEYMOUR STREET

THE TWIN CITY VETERINARY HOSPITAL

3306 KINGSWAY, BURNABY

BOARD YOUR ANIMALS IN THE SUNLIGHT

Dogs and cats boarded by the day or month. Conditioned, trained, trimmed, clipped. Individual kennels and runs for each and every animal, covering 2 acres. Kennels electric lighted and hot water heated. Electrical clipping and drying machines. Dogs of different breeds at Stud. X-Ray and all electrical vibration and massage treatment equipment.

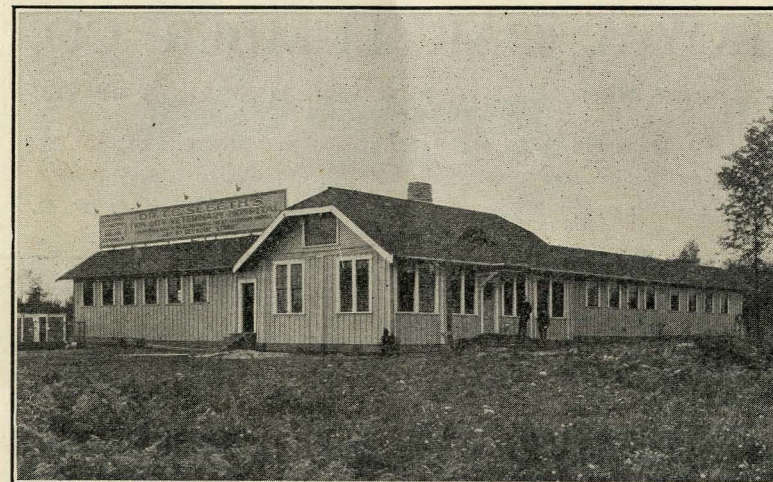
Nurse in Attendance—Miss E. G. Grimm

THE KINGSWAY ENGLISH BULLDOG KENNELS

THE KINGSWAY BOARDING KENNELS

Home of America's Greatest Bulldogs:
Ch. Kingsway Man O' War; K.B.C. Thunderer;
K. White Ambassador

Visit the Hospitals day or night and see how your animals are cared for. We will appreciate you calling.



KINGSWAY BOARDING KENNELS, 3306 KINGSWAY

BEES.

The bee industry has always taken a leading place in Burnaby many of its inhabitants devoting most of their time to it, whilst the large number who keep an apiary as a hobby, find it very profitable.

Leading beekeepers in Burnaby are Mr. W. H. Lewis, Mr. Chas. Sprott, Burnaby Lake, Mr. Mark Marsh, Broadview, and Mr. A. B. Stevenson, Waltham Avenue.



APIARY OWNED BY MR. ALEX. B. STEVENSON

ROYAL OAK LUMBER CO.

LUMBER, WOOD & COAL, BUILDING MATERIALS OF ALL DESCRIPTIONS

Delivered to all parts of Burnaby and Districts of New Westminster

Phone Collingwood 222 - - - Alta Vista P. O.
ROYAL OAK STATION

We Handle Everything Quickest, Surest and Safest
PHONES: Seymour 7626; Abbotsford 36

Fraser Valley Motor Express

232 Abbott Street, Vancouver

Daily service between Abbotsford, Aldergrove, Murrayville, Langley,
New Westminster and Vancouver

Estimates Given Dealers in Repair Work

PLATE GLASS, SHEET GLASS, PLAIN AND BEVELLED
MIRRORS

Manufacturers of Leaded Art Glass
AUTO WINDSHIELDS—HEADLIGHTS

ROYAL CITY GLASS COMPANY

Cor. Sixth and Victoria Sts., Two Blocks above Post Office
Phone 1131 New Westminster, B. C.

JACK GILLARD'S

New and Second Hand Store

1134 Edmonds Street

ANYTHING BOUGHT OR EXCHANGED
EXPRESS AND DELIVERY SERVICE

Goods Carefully Handled and Prompt Attention to Calls
Trips Anywhere at Any Time

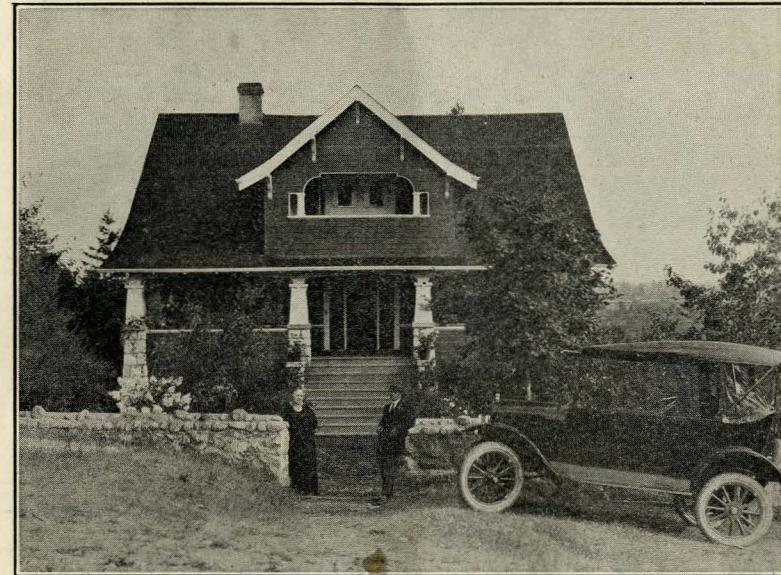
Residence 1636 Stride Avenue Phone 1658Y3

PHONES: Office 800 NOTARY PUBLIC
Residence 488Y

N. H. McQUARRIE

Real Estate and Insurance

We Specialize in Burnaby and New Westminster City Properties
673 Columbia Street, New Westminster, B. C.



MRS. J. R. MURPHY'S RESIDENCE, GILLEY AVENUE

BURNABY HOMESITES.

The highly developed modern facilities in transportation, water service, lighted streets, first-class highways, schools, churches; the quality and variety of soils and proximity to the large centres of population, makes Burnaby a desirable place in which to live.

For those wishing small fruit farms, acreage is available in almost all parts of the municipality, close to transportation and on good roads.

Those desiring a suburban home with an acre or two should come to Burnaby, for here they will find many who have built comfortable

BETTER FURNISHED HOMES MEANS GREATER HAPPINESS

We carry a \$40,000.00 Stock, occupying 25,000 sq. ft. of floor space, away from the High Rent District—that's why our Prices are Lower.

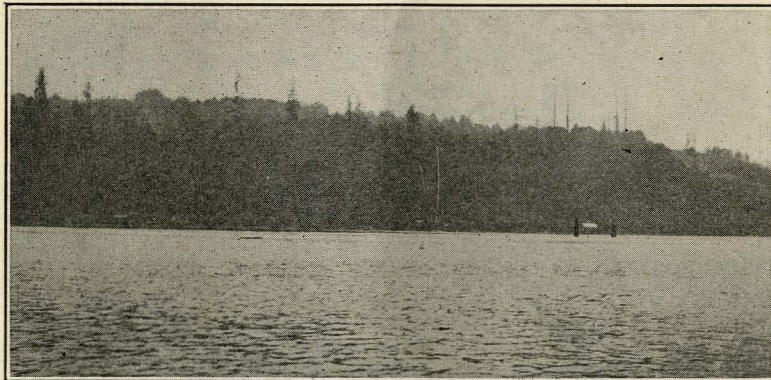
SAVE MONEY BY REMEMBERING THE PLACE

Reliable Furniture Co., Ltd.

"The Store You Can Depend Upon"

Corner of Sixth and Carnarvon Sts. New Westminster, B. C.

N.B.—Bring this ad with you and we'll give you a present with your purchase if you're a new customer.



SHIPPING FACILITIES ON BURRARD INLET
IN BURNABY

The CLARKE & STUART CO. LIMITED

Wholesale and Commercial

STATIONERS : PRINTERS : BOOKBINDERS
SCHOOL EQUIPMENT, OFFICE SUPPLIES, CHARTS,
MAPS, BLUE PRINTING, ARCHITECTS' AND ENGIN-
EERS' SUPPLIES, WATERPROOFING, ETC.

Mail Orders Given Prompt Attention

550 Seymour Street Telephone Sey. 3000
VANCOUVER, B. C.

CONSULT—

R. MOSELEY

FOR YOUR INTERIOR OR EXTERIOR DECORATIONS

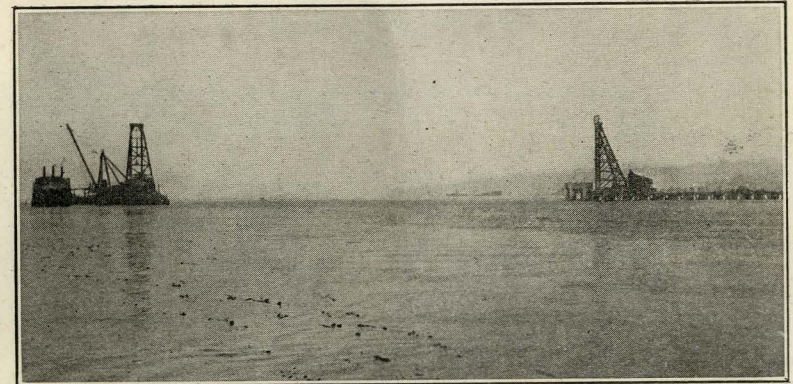
Painting, Paperhanging, Tinting, Signs, Etc.

Skilled Workmanship 1157 Edmonds St., Edmonds, Burnaby

Annandale Supply Company, Ltd. GROCERS

Ask Us For HILL TOP GARDEN TEA
Perfect Quality; popular price, 65c lb.

Phone 1 641 Columbia St., New Westminster, B. C. Phone 2



SHIPPING FACILITIES ON BURRARD INLET
IN BURNABY

homes and are making a fair income from fruits, garden produce and poultry.

Burnaby has a large number of business men with their suburban homes, within a few minutes motor ride of Vancouver and New Westminster, and these have done much to improve Burnaby and make it one of the chief districts of Greater Vancouver.

Many people desire only a city lot, but all require fresh air, a garden and a home at low cost. Building lots and half-acre blocks are available in every district, and at prices within easy reach. The low settlers rates to the industrial centres, and the frequent electric car service places everyone within regular reach of employment in factory, office or store.

INSURE YOUR HOME WITH US

We Represent Reliable Companies—Our Rates are Reasonable

Mahony & Reid

WE INSURE EVERYTHING
NOTARY PUBLIC

Phone 142 Royal Bank Chambers New Westminster, B. C.



A VIEW OF THE BEAUTIFUL BURNABY LAKE DISTRICT

The T. J. Trapp Co., Ltd.

Headquarters for

**Farm Implements, General Hardware
and Supplies**

CREAM SEPARATORS : WAGGONS
ENSILAGE CUTTERS : PUMPS

POULTRY AND BEE SUPPLIES

BUILDERS' HARDWARE : TOOLS
ROOFING : PAINT : OIL

McLAUGHLIN AUTOMOBILES—AUTO ACCESSORIES

Phone 1820—New Westminster

BUY LONG TERM MUNICIPAL BONDS

The tendency of Governments, Cities and Municipalities to offer short term Bonds with a lower rate of interest is becoming more and more noticeable.

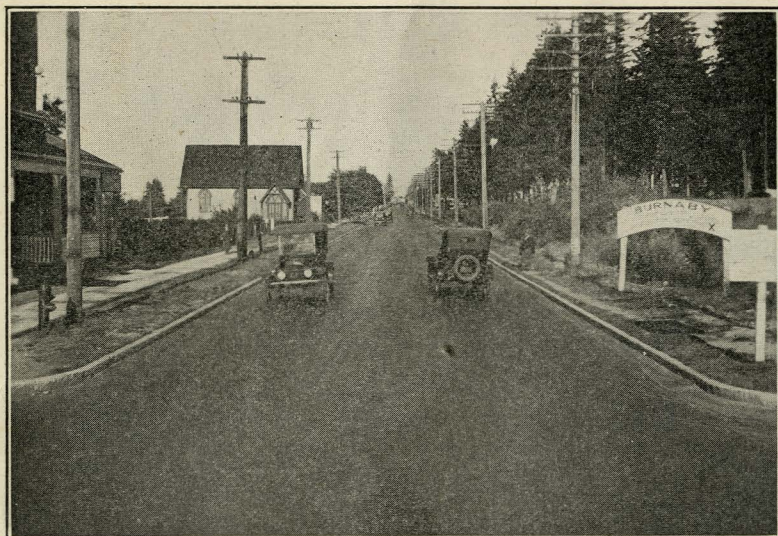
Bond Dealers are counselling their clients to convert the short term Bonds for the longer term issues—preferably Municipal.

Particulars of any issue supplied on request.

Westminster Trust Company

NEW WESTMINSTER, B. C.

MORTGAGES ——— BONDS ——— INSURANCE



KINGSWAY, LOOKING EAST

Phone New Westminster 897

DAVIES & SON FLORISTS

Greenhouses at 1349 Kingsway, Burnaby
Store 681 Columbia St., New Westminster

Growers of

CUT FLOWERS, PLANTS and HOT HOUSE VEGETABLES
FLORAL DESIGNS, WEDDING BOUQUETS and ALL KINDS
OF FLORAL WORK

Nothing Too Big

Nothing Too Small

Chapman's Motor Cartage, Ltd.

Frank Chapman, Mgr.

Vancouver
Westminster

MOTOR TRUCK FREIGHT SERVICE

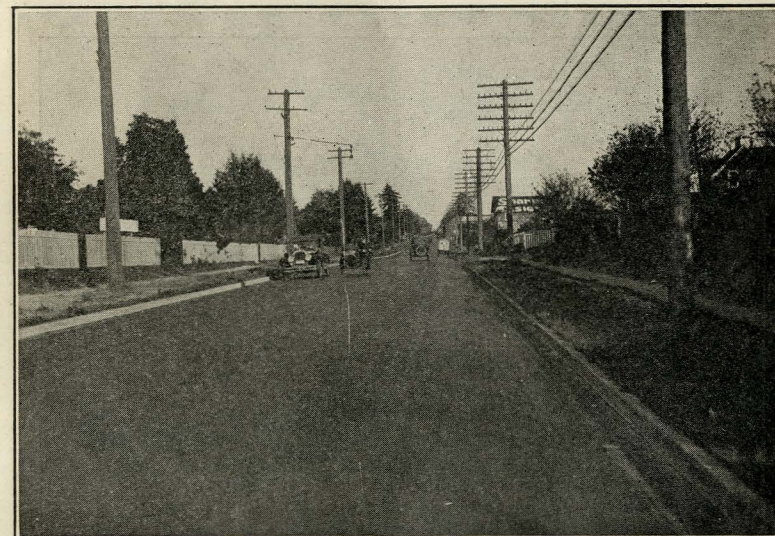
Every Two
Hours

All Kinds of Motor Trucking Done on Short Notice

Westminster: 879 Columbia St.
Phone 443

Vancouver: 82 Water St.
Phone Sey. 1027-1028

House Phone: High 1135



KINGSWAY, LOOKING EAST

TRANSPORTATION.

Burnaby is supplied with transportation by the British Columbia Electric Railway Co., three of whose interurban lines pass through the municipality. The Central Park line was the first electric interurban railway in Canada and carries 10,000 passengers a day. A ten and twenty minute service is given. The Burnaby Lake and Lulu Island lines serve other parts. On the north side, an extension of the Hastings street line serves a large population as do extensions of the New Westminster system on the east. The fares on the interurban lines are considered the lowest on the continent. At the commutation rates, a person can travel from Vancouver to Highland



Agents for
London & Lancashire
Insurance Co., Ltd.

OUR SPECIALTY IS

Investments for Income

Expert Service—Efficiency—Experience
in placing our clients' funds on

Real Estate Investments — First Mortgage
Loans — Municipal and Government Bonds

HUGH M. FRASER & CO., LTD.
FINANCIAL AGENTS

122 Hastings Street, West Vancouver, Canada



The Great Traders of The Great West
Where People Shop for Quality

Situated in the heart of Vancouver, British Columbia,
 this store carries a stock of over \$2,000,000.00
 contained in its

60 Stores Under One Roof

Offering everything from wearing apparel to
 furnishings for the home.

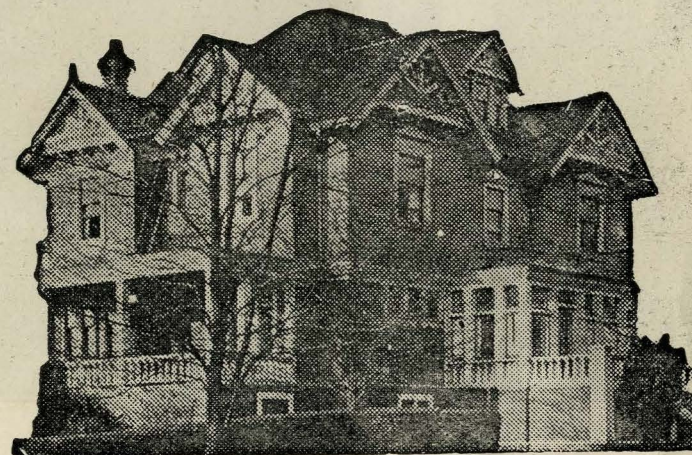


Make your headquarters here when
 visiting in Vancouver



Hudson's Bay Company

**Vancouver Clinic and
 Sanitarium**



*Electrotherapy, Hydrotherapy
 Physiotherapy & Heliotherapy*

The Vancouver Clinic and Sanitarium is equipped with the
 most modern scientific apparatus of any institution of its kind in
 Western Canada for the treatment of disease.

DISEASES TREATED

Acne, Anaemia, Asthma, High Blood Pressure, Lumbago,
 Neuritis, Catarrh (all forms), Constipation, Eczema,
 Goitre, Heart Disease, Kidney Disorders, Neurasthenia,
 Stomach Disorders, Diseases of Women, Cerebral Conges-
 tion, Tonsillitis, Rheumatism, Rectal Diseases, Deafness,
 Stricture, Over and Under-weight, Pneumonia, Headache,
 Hysteria, Chorea (St. Vitus' Dance), Tumors (internal or
 external), Paralysis, Inflammation of the Joints,
 Sciatica,, Etc.

I will gladly consult with prospective patients and tell them
 exactly what can be done for them here.

Office hours are from 9 to 5, but patients are urged to come
 as early in the day as possible. Fees are very moderate. Cor-
 respondence is invited.

Dr. J. L. TOTTEN

N.D., S.P., F.S.D., D.P.T., M.E.

1315 Cardero Street : Phone Seymour 6903

VANCOUVER, B. C.

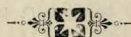


CENTRAL PARK LAWN BOWLING CLUB

Plumbing and Heating Contractors
Cornice, Roofing and Tinsmithing

Automobiles and Accessories

James & McClughan
LIMITED

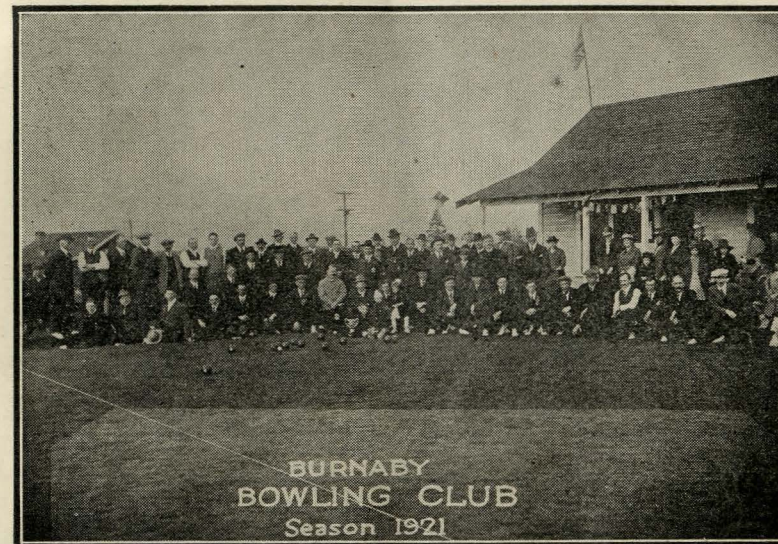


PHONES 302—1170

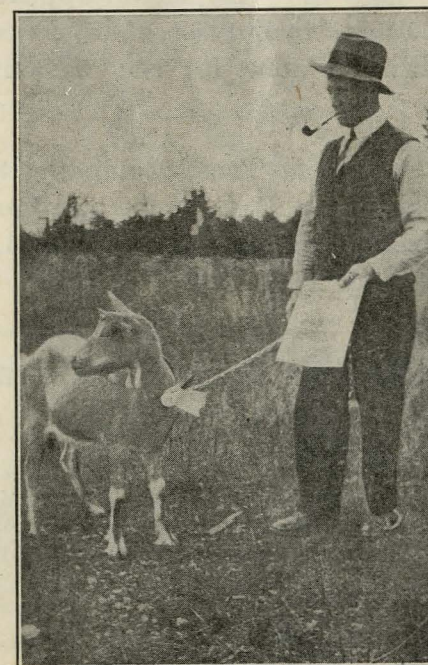
P. O. Box 482

Corner Begbie and Front Streets

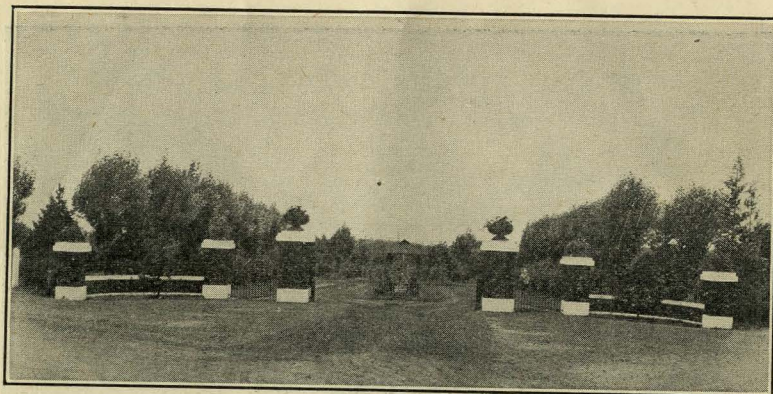
NEW WESTMINSTER, B. C.



BURNABY LAWN BOWLING CLUB



J. R. WILSON—THE GOAT KING



Ocean View Burial Park

Is the new perpetual care cemetery adjoining the south side of Central Park. Uniform Perpetual Care has been made the absolute rule of Ocean View Burial Park, and no plot or grave is sold without it. This should appeal especially to those who may change their place of residence, and particularly so, when it is done for you without any yearly assessment.

Canadian Financiers Trust Company, 839 Hastings Street, West, Vancouver, B. C., is the agent and trustee for Ocean View Burial Park, and will be pleased to answer all enquiries. Telephone Sey. 5960.

You Should Realize What Cash Means to You

Credit ruins many a good home. Once you start, it's hard to stop. Just like playing the races, you know you are taking some chance, but you don't know how to quit.

Pay Cash and Carry and You Eliminate the Necessity of Having to Pay for Somebody Else Who Cannot Pay

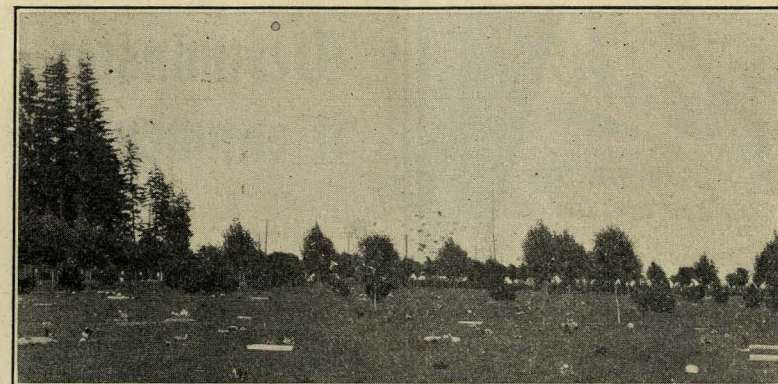
THE FAT HAS TO FRY THE LEAN

The Peoples Providers, Ltd.

"Three Stores of Plenty"

"Store on Wheels"

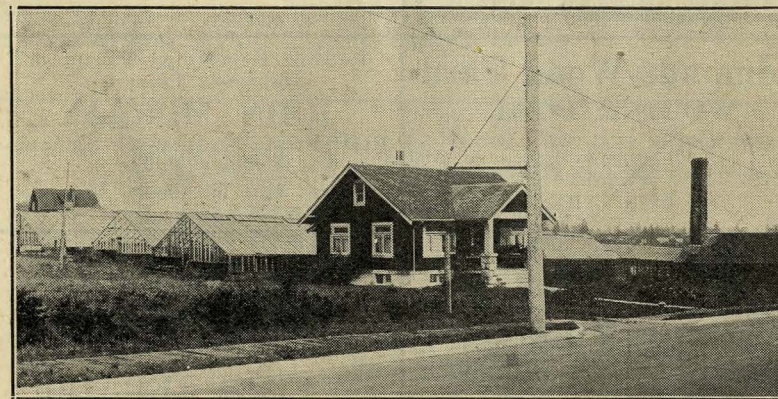
646 Columbia Street 513 Eighth Street New Westminster, B. C.



OCEAN VIEW BURIAL PARK

Park, a distance of $8\frac{1}{2}$ miles, for 8c. with a transfer in Vancouver city. These low rates are a factor in the development of the municipality as the settlement in the vicinity of the interurban lines prove.

The B. C. E. R. Co. has more than 300 miles of track in its mainland system and three hydro-electric plants generating more than 120,000 horse power. The C. P. R. and the G. N. R. pass through North Burnaby, and the Burnaby Lake districts. The former skirting the Burrard Inlet and affording direct communication with Vancouver and the cities to the east. Along this line are located several important industries. Over the G. N. R. line the C. N. R. passes through Burnaby, affording shippers direct access to the markets of the prairies and United States. Industries located on Burrard Inlet and the North Arm have facilities for shipping by both rail and water.



MESSRS. DAVIES & SON'S NURSERIES, KINGSWAY, BURNABY

Fresh
—no matter
where you buy it

Immediately after
roasting, coffee, if
exposed to air, begins
to lose its freshness.

There is no air in the

**NABOB
COFFEE**

vacuum tin—which
preserves its strength
and flavor for all time.

Nabob is **not** sold in
bulk. Always fresh.



Try
**NABOB
TEA**

KELLY, DOUGLAS & CO. LTD

Westminster Monumental Works



Where you get real value
and first class work



*Ocean View Tablets a
Specialty*

in dark, polished granite



MARKERS \$10.00 and up



W. WILLIAMSON, Proprietor
Royal Ave. & 12th St.
New Westminster, B. C.

Edmonds Wood Yard WOOD & COAL

ANYTHING IN FUEL WE HAVE IT
Phone West'r 883 Edmonds St.
BURNABY

Reliable Reports on Vacant or
Improved Property

JOHN MURRAY

Real Estate, Insurance, Valuator,
Notary Public
Office: 4007 Kingsway, McKay,
BURNABY, B. C.

LUNCH HOUR?

Man's anatomical construction demands a
good luncheon daily, else his work suffers

GREEN'S

appreciates this need and fills it
with satisfaction to all
HOME COOKED MEALS

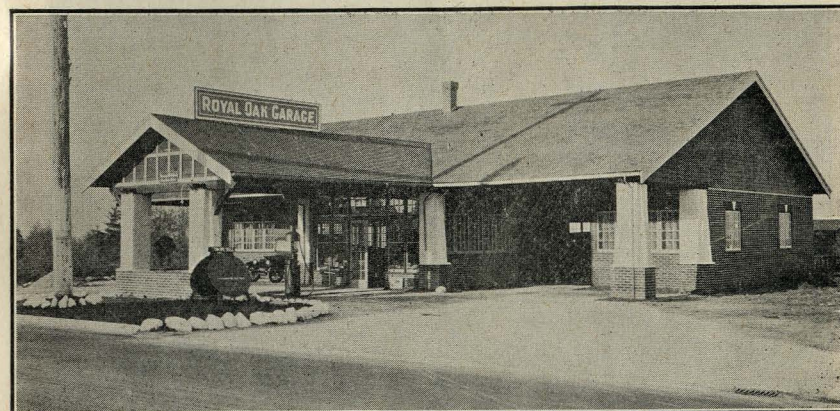
—TRY—

CHAMBERLIN

for

WATCH REPAIRS

614 Columbia St., New Westminster



ROYAL OAK GARAGE, KINGSWAY

CLIMATE AND SCENERY.

For the information of intending settlers Burnaby climate may
be compared to that of the South of England. Sufficient rain keeps
the crops growing throughout the summer without irrigation, except
in an unusually dry season. Little snow falls in winter and periods
of frosty weather are of short duration. The variety and excellence
of the fruit, vegetable, dairy and farm products is ample evidence
of the excellence of the climate.

The scenic attractions are varied with mountain, woodland, lake,
river and sea. The snowclad mountain tops, reflecting the sunlight,
the purple shadows of the hills, present marvellous contrasts in
colors; the Fraser River and the Gulf of Georgia glistening under the
setting sun, and with the Island mountains in the far distance all com-
bine in a natural picture of great beauty.

Royal Oak Garage

Kingsway and Royal Oak Ave.

We have a large open driveway, making easy access to
Gasoline Station, Air, Water and
Repair Departments.

"Service that Brings Them Back"

Tel. Col'wood 280 Y1

S. M. CULLEN, Prop.

Repair Dept.—O. J. Strong



CENTRAL PARK TOURIST CAMP

CENTRAL PARK CAMP

The Finest Camping Ground in Canada

ALSO

WANDER INN

Near the Green Timbers
Pacific Highway

F. McCLEMENTS, Proprietor

"HOME FROM HOME"

Phone Coll. 389L3 Established 1912

WILSON FORSTER

Plumbing, Heating & Electrical
Contractor

Electrical Ranges Supplied and
Installed—Estimates Given and
General Repairs

Store and Res.: 2849 McKay Avenue
BURNABY, B. C.

Phone Coll. 429

PHILIP OBEN

REAL ESTATE

Houses To Rent and For Sale
We Specialize in Acreage and Resi-
dential Properties

4525 Kingsway, Central Park, B. C.

A. H. BLACKBURN
Optometrist and Manufacturing
Optician

Complete Grinding Plant
Scientific Sight Testing

Phone 1436 645 Columbia Street
NEW WESTMINSTER, B. C.

We are the Agents for
Sherwin-Williams Paints
and
McClary's Kootenay, Garry and
Regina Ranges
And We Sell Them Too!

Kirk's Hardware
606 Columbia St., New Westminster



CENTRAL PARK—THE TOURISTS' MECCA.

Central Park is one of the most favored camping grounds for tourists on the North American continent made apparent by the number of autoists who have camped there this year. 1,500 have pitched their tents within its shady bowers from July 8th to August 12th. Tourists from Eastern Canada and the





BURNABY SOUTH HIGH SCHOOL

In 1922 the Burnaby School Board, Trustees George, Grant, Swan and Dickson initiated a vigorous building campaign. Among the new schools erected was the Burnaby South High School, a fine modern 8 roomed building located on Kingsway near Edmonds.

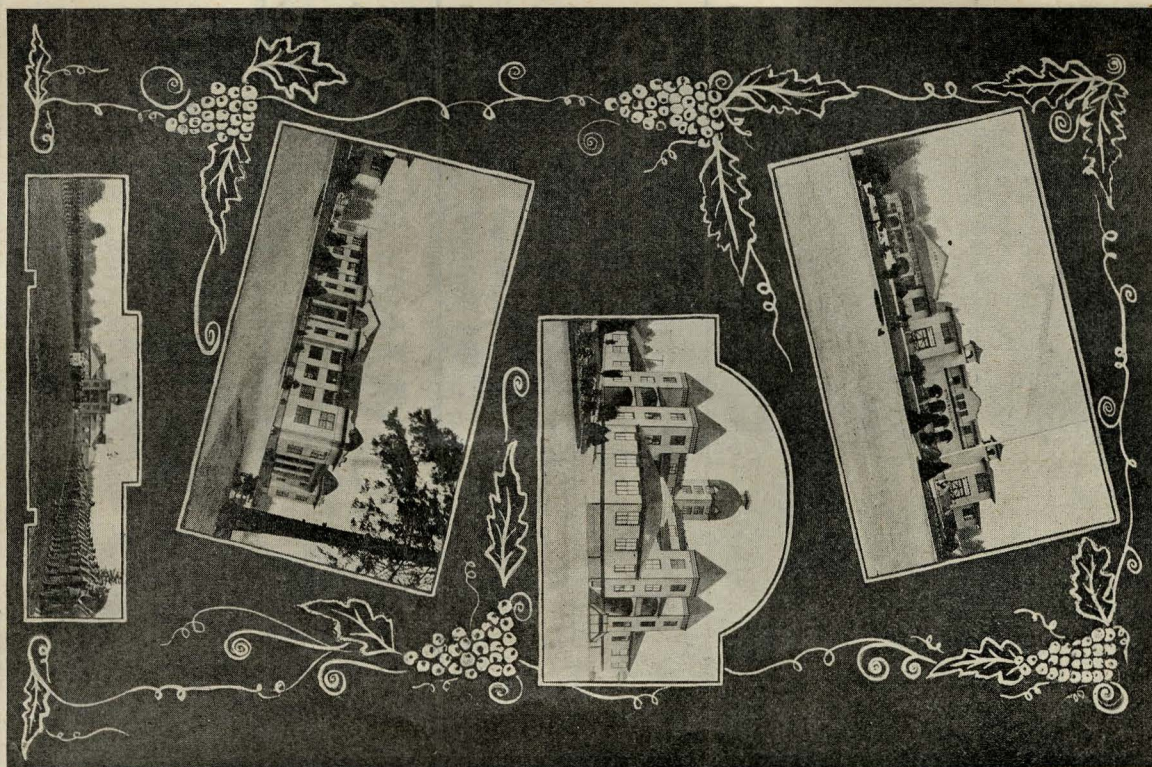
The School was formerly opened on September 8, 1922, by the Hon. Dr. McLean, Minister of Education. This was the first fully organized High School in Burnaby. The present enrolment is 232 pupils. These students are tutored by a staff of 7 teachers. Mr. C. G. Brown, B.A., Principal; Mr. G. P. Black, M.A., Vice-Principal; Miss E. Montgomery, B.A., Mr. R. S. Willison, B.A., Mr. C. E. Milley, B.A., Miss J. Roy, B.A. and Mr. Sangster, B.A.

In 1923 a similar High School was erected in North Burnaby. This School is under the direction of Mr. G. B. Carpenter, B.A., Principal; Mr. J. Duffy, M.A., Miss A. Watson, B.A. and Mr. Hallet, B.A.

The Burnaby High Schools, though new are making enviable records both in the Academic work and in the fields of sport.

Three branches of work are taken up: Academic, leading to Matriculation and Normal Entrance, and the Commercial Course. These well equipped High Schools are the culmination mainly of the progressive educational policy of the present School Board.

PROVINCIAL EXHIBITION BUILDINGS,
NEW WESTMINSTER, B. C.



When
buying a **B.S.A.**
BICYCLE you make
a good investment

You'll see them with other
leading makes at
Fred Deeley's
"The Cycle Man"
418 Hastings Street, West
VANCOUVER

EVERYBODY KNOWS

PALETHORPE

Burnaby's Resident Real Estate Broker

Opp. Municipal Hall, Edmonds, B. C.

Loans — Accident, Fire and Auto Insurance — Estates Managed
Valuator

Information freely given

Phone Westminster 774L1

EMPIRE GARAGE

Two Blocks from Municipal Building, on Vancouver side

GAS — OIL — SUPPLIES — REPAIRS

Open from 7 a.m. to 12 midnight

Phone Westminster 1646L1

1996 Kingsway

Edmonds

J. E. BROWN & CO.

CLOTHIER AND FURNISHER

611 Columbia Street

New Westminster, B. C.

Burnaby Trading Company

Corner Kingsway and McKay—Phone Coll. 469



—New and Used Furniture, Stoves and Ranges—

Lowest Prices—Quick Delivery

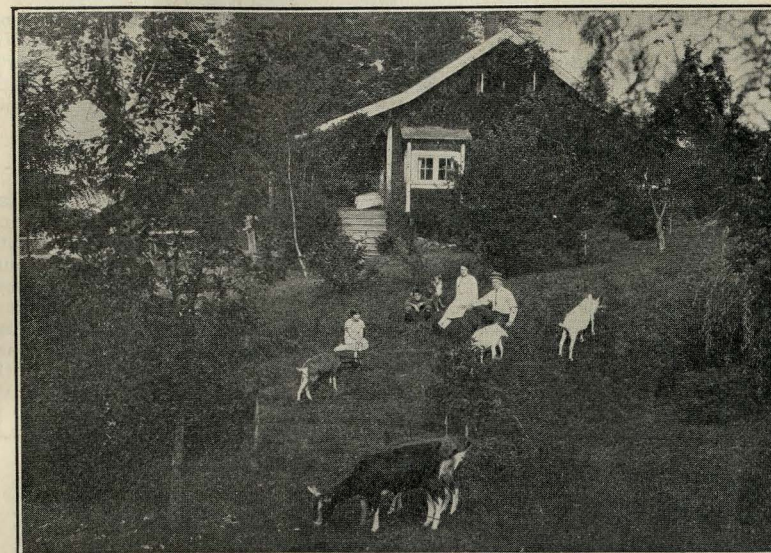
PERCY B. BROWN

THE BURNABY AUCTIONEER

Insurance, Storage, Conveyancer, Notary Public

Phones: Office, Westminster 1254; Residence 475Y1

EDMONDS



RESIDENCE OF MR. J. STUART JAMIESON, DOUGLAS ROAD

United States appreciate the efforts put forth by the Municipality of Burnaby to make them welcome.

The Park comprises 243 acres. It is a natural woodland park, and has been equipped with water service, light, cooking conveniences, benches and tables for the accommodation of tourist campers and picnic parties. There are also tennis courts, bowling greens and baseball grounds situated in the Park. Located on Kingsway and electric tram line, it is easily reached by auto or suburban car.

POULTRY RAISING AND EGG PRODUCTION.

Poultry breeders find Burnaby one of the finest municipalities in which to rear their birds, owing to the fine dry soil and climate, besides being near the most important market centres of New Westminster and Vancouver City, in which they sell their products.

THE FRASER CAFE

J. H. MORGAN, Proprietor, 730 Columbia St., Near B. C. E. R. Depot

NEW WESTMINSTER, B. C.

EXCELLENT CUISINE AND SERVICE

Our reputation is our best recommendation

OPEN DAY AND NIGHT

For Information On—

BURNABY PROPERTY

consult

William Wright & Company, Ltd.

Phones: Coll. 18R1; Coll. 216Y2

REAL ESTATE, LOANS,

3706 Kingsway, Burnaby, B. C.

INSURANCE

Over 70,000 eggs were produced within four months this year from Mr. J. K. George's White Leghorns. Amongst the many noted poultry prize winners from Burnaby may be mentioned Mr. Thurston, Central Park; Mr. Walker, Burquitlam; Mr. W. H. Grant (Anconas); Mr. Venning, Highland Park (Barred Rocks). All these gentlemen can give any information regarding poultry raising in Burnaby.

EDUCATION.

Twenty-four schools, including Domestic Science and Manual Training, and two eight-roomed High Schools adequately provide for the educational needs of the municipality and are located where they best serve the centre of population. North Burnaby is served by Gilmore Avenue, Howard Avenue and Sperling Avenue Schools. Barnet has one school, Burquitlam has one school at Hamilton Road; East Burnaby is served by schools at Armstrong Avenue and Second Street. The schools at the corner of Edmonds Street and Douglas Road serve the Edmonds district. Burnaby Lake, Broadview and Central Park have each one school. The McKay district is served by the Kingsway West Schools, and another school is provided at Kingsway East.



FOR THE
Purest and Best Milk
delivered to your door

PHONE UP

MAPLE LEAF DAIRY

Phone Coll. 102

3414 Imperial St., New West'r

J. WEST

HOUSES AND ESTATES FOR SALE, INSURANCE
NOTARY PUBLIC

Specialist in Burnaby Tax Sale Properties Information Freely Given
Jubilee Station, B. C.

"QUALITY for QUALITY"

Our groceries cost you LESS money. We are established for over twenty-five years. We sell the Best Groceries with Better Service for Less.

Three Big Stores to Choose from

C. A. WELSH, LTD.

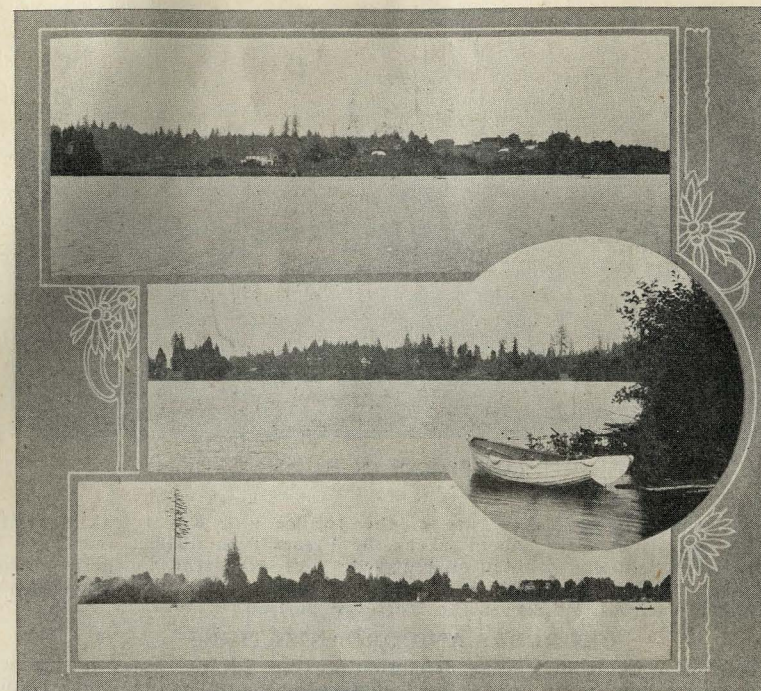
Main Store, 681 Columbia St.; West End Branch, 1119 6th Ave.; Sapperton Branch, Opposite Royal Columbian Hospital New Westminster

BURNABY BOARD OF TRADE

PRESIDENT - - - THOS. D. COLDICUTT

SEC.-TREAS. - - - W. G. RICHARDSON

(Box 213, McKay, B. C.)



DEER LAKE, BURNABY

While on your trip north or south on the Pacific Highway don't fail to visit the

COMMERCIAL HOTEL

EVERY HOME COMFORT

M. J. Coughlin, Prop.
Columbia Street

Dan Murray, Mgr.
New Westminster, B. C.



There is No Charge

To get full particulars of my special offer

whereby I do dental work for

— 10 % LESS —

SEE ME TO-DAY—

CONSULTATION AND
ESTIMATES FREE

DR. R. LLEWELLYN DOUGLAS

SURGEON DENTIST

New Westminster, B. C. Phone 25 720 Columbia Street



LABOR DAY SPORTS IN BURNABY, 1924

Nelson Avenue School takes care of the Jubilee and Royal Oak districts, while the Riverway East School serves the Fraser Arm district.

One High School is situated on Kingsway and serves the Southern portion of the Municipality. The other is situated on Pandora Street between Madison and Rosser Avenues and serves the Northern portion.

CHURCHES AND ORGANIZATIONS.

Places of worship of leading denominations are located in every district, and Burnaby has some very fine congregations and many commodious churches.

Church of England: St. Alban's, Edmonds; All Saint's, Royal Oak; St. Stephen's, Burnaby; St. Nicholas, Vancouver Heights; St. John's, Central Park and Broadview.

Roman Catholic Church: Vancouver Heights.

Methodist Church: East Burnaby, Jubilee, Vancouver Heights and Dun-donald.

Presbyterian Church: Gordon Presbyterian, Edmonds; Henderson Presby-terian Church, West Burnaby; Central Park Presbyterian, Central Park and Vancouver Heights Presbyterian, Vancouver Heights.

Baptist Church: Edmonds, Royal Oak.

Union Church: Capitol Hill.

The activities of the people are represented in such other organizations as the Victorian Order of Nurses, Imperial Order of Daughters of the Empire, Girl Guides, Boy Scouts, G. A. U. V., Women's Institute, G. W. V. A., Agri-cultural Society, Burnaby Lake Fruit-growers Association and the Board of Trade.



TO OUR READERS

It has been the endeavor of the compilers of this book to give only true and accurate information regarding the Municipality of Burnaby, also that all advertisers in this book are tried and reliable firms, and can be relied upon to give the best of service at all times, and the Corporation of Burnaby takes this opportunity to thank all who have helped to make the Burnaby exhibit and this booklet the success that it is.

J. R. WILSON.

PLEASE KEEP THIS BOOK FOR REFERENCE

Printed by Jackson Printing Co., Ltd.
New Westminster, B. C.



"Gutta Percha" Tires BALLOON - - CORD - FABRIC -

FOR SALE BY ALL LEADING DEALERS

MADE BY

GUTTA PERCHA & RUBBER, LTD.
VANCOUVER ————— VICTORIA

Municipal Legal Advisers

McQUARRIE & CASSADY are Solicitors for Burnaby and are also Solicitors for New Westminster City and the Municipalities of Surrey, Coquitlam and Fraser Mills and for the Bank of Nova Scotia in New Westminster, British Columbia. Mr. McQuarrie is the member of the Dominion Parliament for the District of New Westminster, and is a King's Counsel. The firm has a general practice, including litigation, corporation conveyancing and Land Registry Office work and has an office in the Westminster Trust Block, New Westminster, and another office at 712 Standard Bank Building, Vancouver.



Another Burnaby Advantage

SHELLY
Bakery Service



Enjoy the Best

SPECIALISTS IN BURNABY PROPERTY

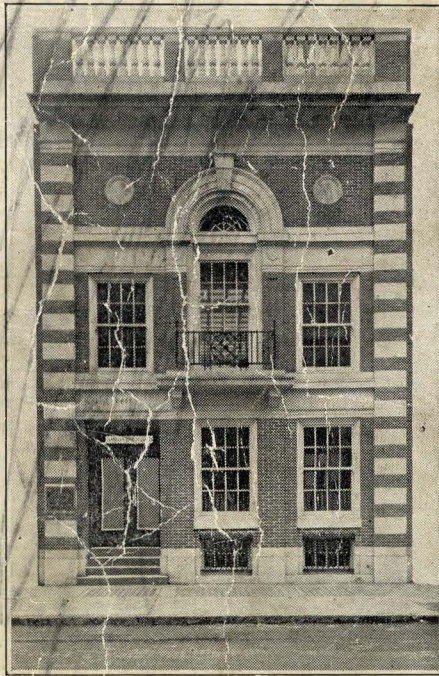
Market
Gardens



Acreage



Berry
Land



Poultry
Farms



Bungalows



Houses



New Office Building

Ceperly, Rounsefell & Co.

(Established in 1886)

846 HASTINGS STREET W., VANCOUVER, B. C.

Members of Vancouver Real Estate Exchange.

Authorized Agents for Municipality of Burnaby.