

TO: MAYOR & COUNCIL
FROM: GENERAL MANAGER ENGINEERING
SUBJECT: **RIGHT-OF-WAY CLOSURE OF DARNLEY STREET AND CLUNY AVENUE REF.19-03, SUB.19-10**
PURPOSE: To obtain Council authority to introduce a Burnaby Highway Closure Bylaw for the closure of a portion of Darnley Street and Cluny Avenue.

RECOMMENDATION

THAT the introduction of a Burnaby Highway Closure Bylaw for an approximate 3,397.9 m² (36,574.7 sq. ft.) portion of road, as shown on the *attached* Reference Plan EPP95934, be authorized.

CHIEF ADMINISTRATIVE OFFICER'S COMMENTS

I concur with the recommendation of the General Manager Engineering.

1.0 POLICY SECTION

Not applicable.

2.0 BACKGROUND

A Highway Closure Bylaw is required to close two City-owned road allowances located on a portion of Darnley Street and Cluny Avenue as part of the Norland Works Yard modernization project. This is in conjunction with the applicable subdivision to consolidate the site into a single development parcel.

3.0 GENERAL INFORMATION

The proposed road closure areas are approximately 609.2 m² (6,557.4 sq. ft.) on Cluny Avenue and 2,788.7 m² (30,017.3 sq. ft.) on Darnley Street and Cluny Avenue. There is also a proposed road dedication of approximately 174.0 m² (1,872.9 sq. ft.) for a cul-de-sac turn-around on Darnley Street. The proposed road dedication will improve the function of the cul-de-sac and access to Norland Works Yard. All areas are subject to final survey confirmation.

It is recommended that Council authorize the introduction of a Highway Closure Bylaw. With subsequent adoption of the bylaw, the subject road areas would be closed,

consolidated with adjacent City-owned sites, and reconfigured as part of the completion of the applicable subdivision and road closure applications.

4.0 COMMUNICATION AND COMMUNITY ENGAGEMENT

Not applicable.

5.0 FINANCIAL CONSIDERATIONS

Not applicable.

Respectfully submitted,

May Phang, P.Eng. Deputy General Manager Engineering
For
Jozsef Dioszeghy, P.Eng. General Manager Engineering

ATTACHMENTS

Attachment 1 – Road Dedication Plan EPP95934

REPORT CONTRIBUTORS

This report was prepared by Jasmine Chen, Engineering Project Manager, and reviewed by Chris Stacey, P.Eng., Director Engineering Projects.

REFERENCE PLAN TO ACCOMPANY THE CITY OF BURNABY BYLAW NO _____ TO REMOVE THE ROAD DEDICATION OF A PORTION OF ROAD DEDICATED BY PLAN 4147

PLAN EPP95934

Pursuant to Section 120 of the Land Title Act and Section 40 of the Community Charter

BCGS 92G.026

Scale 1 : 750

The intended plot size of this plan is 864mm in width by 560mm in height (D Size) when plotted at a scale of 1:750

- Legend**
- denotes standard iron post found
 - denotes standard iron post placed
 - ⊙ denotes control monument
 - denotes lead plug found
 - ▲ denotes traverse hub
 - ▣ denotes old pattern dominion iron post
 - mts denotes not to scale

Integrated Survey Area No. 25, Burnaby, NAD'83 (CSRS) 4.0.0.BC.1.GVRD

All distances are in metres and decimals thereof.

Grid bearings are derived from differential dual frequency GNSS observations and are referred to the central meridian of UTM Zone 10 (123° West Longitude).

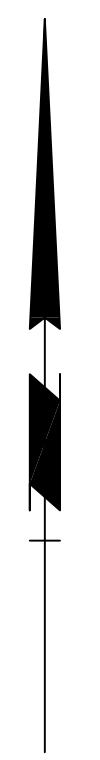
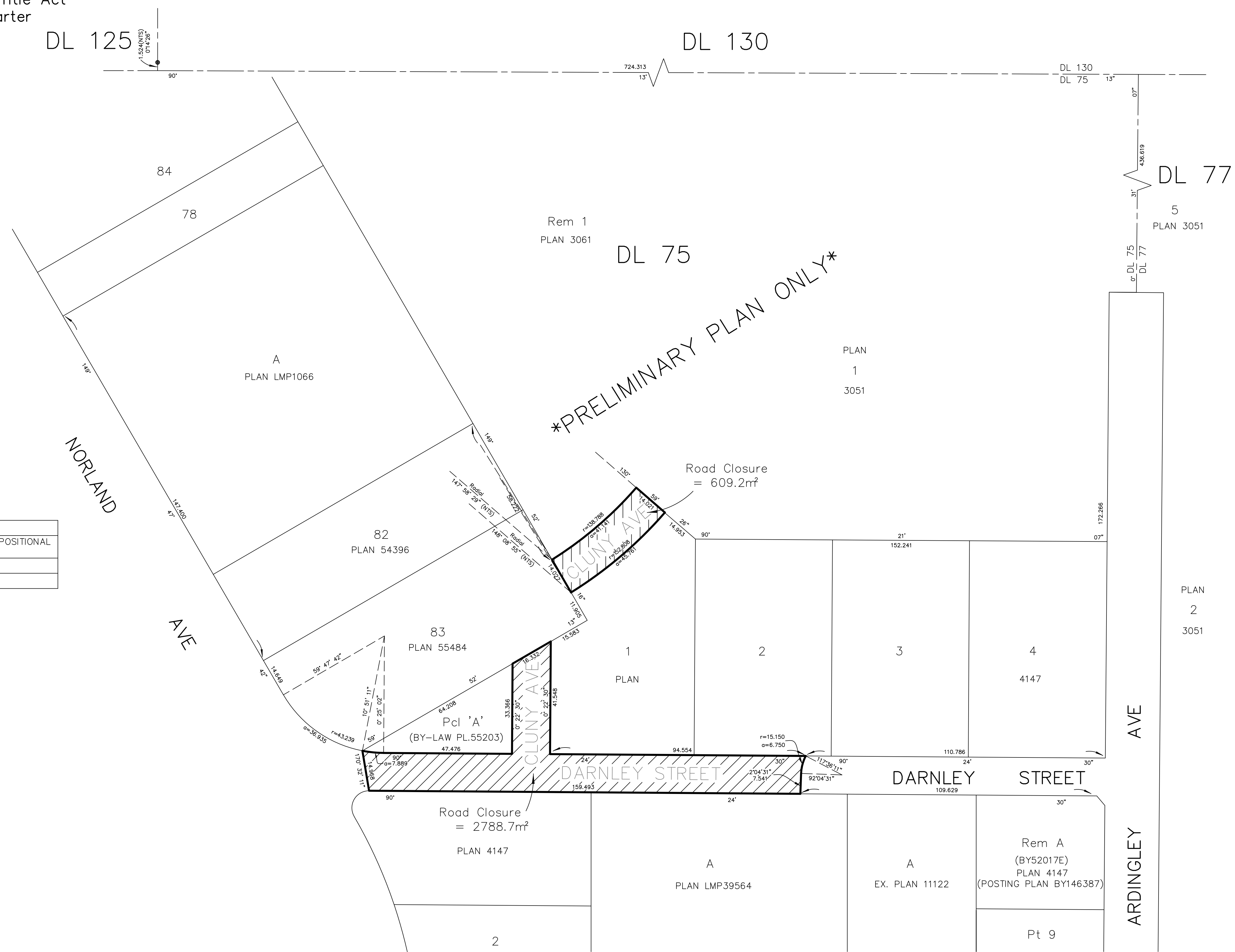
This plan shows horizontal ground-level distances unless otherwise specified. To compute grid distances, multiply ground-level distances by the average combined factor of 0.9996007. The average combined factor has been determined based on a mean ellipsoidal elevation of -4.162 metres.

The UTM coordinates and estimated network horizontal positional accuracy achieved are derived from dual frequency GNSS observations to Vancouver City Firehall ACP (GCM No. 875864).

The coordinates listed are for mapping purposes only and should not be used to determine property boundaries.

Some posts and lines have been exaggerated for clarity.

NAD83 (CSRS) 4.0.0.BC.1.GVRD UTM ZONE 10 COORDINATES				
TH NAIL	NORTHING	EASTING	COMBINED FACTOR	HORIZONTAL POSITIONAL ACCURACY
110	5455814.928	501778.135	0.9996006	0.02
111	5455996.866	501689.892	0.9996008	0.02



This plan lies within the jurisdiction of the Approving Officer for the City of Burnaby.
 "This plan lies within the Metro Vancouver Regional District."

The field survey represented by this plan was completed on the ___th day of October, 2021.
 Gary Holme, BCLS #736