

**COMMUNITY HERITAGE COMMISSION**

*HIS WORSHIP, THE MAYOR  
AND COUNCILLORS*

**SUBJECT: PRESERVATION AND REPAIR OF CENOTAPHS AND HERITAGE  
LANDSCAPE FEATURES**

**RECOMMENDATIONS:**

1. THAT this report be received for information purposes.
2. THAT a copy of this report be forwarded to the Parks, Recreation and Culture Commission.

**REPORT**

The Community Heritage Commission, at its meeting held on 2021 June 10, received and adopted the attached report providing an update on work underway to preserve and maintain cenotaphs and heritage landscape features that have been identified as civic heritage resources.

Respectfully submitted,

Councillor C. Jordan  
Chair

Councillor J. Wang  
Vice Chair

Copied to:	Acting City Manager Director Planning and Building Director Corporate Services Director Engineering Director Finance Director Parks, Recreation and Cultural Services
------------	--

**TO:** CHAIR AND MEMBERS  
COMMUNITY HERITAGE COMMISSION

**DATE:** 2021 June 02

**FROM:** DIRECTOR PLANNING AND BUILDING  
DIRECTOR, PARKS, RECREATION AND  
CULTURAL SERVICES

**FILE:** 77000 05

**SUBJECT: PRESERVATION AND REPAIR OF CENOTAPHS AND HERITAGE  
LANDSCAPE FEATURES**

**PURPOSE:** To provide an update on work underway to preserve and maintain cenotaphs and heritage landscape features that have been identified as civic heritage resources.

---

**RECOMMENDATIONS:**

1. **THAT** the Community Heritage Commission receive this report for information.
2. **THAT** a copy of this report be advanced to Council for information and that Council forward a copy of this report to the Parks, Recreation and Culture Commission.

**REPORT****1.0 BACKGROUND**

At its 2019 November 28 meeting, the Community Heritage Commission approved a work plan for 2020 and 2021. Item 4.1.2 *Stewardship of Civic Heritage Resources* identifies a review of civic monuments and landscape features as a work plan item. These masonry objects are located within City of Burnaby Parks, and include cenotaphs, gates, arches, walls, and industrial artifacts. This report provides an update on the status of this work plan item, and outlines work to be completed as part of a phased project that includes assessment, repair, conservation and interpretation planning, and conservation works.

**2.0 POLICY FRAMEWORK**

The work outlined in this report aligns with the following goals and sub-goals of the *Corporate Strategic Plan*:

- ***A Dynamic Community***
  - Community development – Manage change by balancing economic development with environmental protection and maintaining a sense of belonging
- ***A Safe Community***
  - Transportation safety – Make City streets, pathways, trails and sidewalks safer

To: Community Heritage Commission  
 From: Director Planning and Building  
 Director Parks, Recreation and Cultural Services  
 Re: Preservation and Repair of Cenotaphs and Heritage Landscape  
 Features  
 2021 June 02..... Page 2

In addition to these goals, Burnaby’s Official Community Plan includes the direction under its Heritage Policy (12.4.4) that the City continue its stewardship of civic heritage resources.

### 3.0 PRESERVATION AND REPAIR OF CENOTAPHS AND HERITAGE LANDSCAPE FEATURES

This report outlines four phases of work for the preservation and repair of cenotaphs and heritage landscape features owned by the City of Burnaby and located in City parks. These phases are summarized in the table below:

Phase	Timeframe	Condition Assessment	Repair	Conservation Planning	Conservation Works
Phase I	2020	X			
Phase II	2021		X	X	X
Phase III	2022		X	X	X
Phase IV	2023-2025				X

As shown above, the timeframe for the four phases of this project is 2020-2025. Staff in Parks, Recreation and Cultural Services and Planning and Building are advancing the repair, planning, and conservation work outlined in this report.

#### 3.1 Phase I: Condition Assessment

In 2020, Phase I work to review the condition of the City’s cenotaphs and heritage landscape resources was undertaken as identified in the 2-year work plan of the Community Heritage Commission. These resources include:

- Central Park Entrance Gate (3883 Imperial Street)
- Jubilee Grove Arch (3883 Imperial Street)
- Alta Vista Reservoir Vent (5172 McKee Street)
- South Burnaby Cenotaph (6749 Nelson Avenue)
- Burnaby South High School Cenotaph (6650 Southoaks Crescent)
- North Burnaby Cenotaph (250 Willingdon Avenue)
- Fairacres Estate Gate and Fairacres Greenhouse Foundation Wall (6344 Deer Lake Avenue)
- Mather’s House (Altnadene) Gate & Wall (6490 Deer Lake Avenue)
- North Pacific Lumber Company ruins (8198 Burrard Inlet)

Staff engaged a consulting team led by Iredale Architects that included a heritage consultant, structural engineer, and heritage mason to assess the physical condition of the City’s heritage masonry features and identify priorities for intervention based on condition. The *City of Burnaby Civic Monuments Assessment* by Iredale Architects (the Iredale Report) assesses the condition of eight civic heritage landscape resources and provides recommendations for repair and

To: *Community Heritage Commission*  
 From: *Director Planning and Building*  
*Director Parks, Recreation and Cultural Services*  
 Re: *Preservation and Repair of Cenotaphs and Heritage Landscape*  
*Features*  
 2021 June 02..... Page 3

preservation. A separate analysis of the Jubilee Grove Arch was undertaken by McGinn Engineering & Preservation, and a condition assessment of the Alta Vista Reservoir Vent was completed by RDH Building Science.

Based on these assessments, staff has identified the Central Park Entrance Gate and Jubilee Arch as the highest priorities for repair, and has also recommended minor maintenance and repairs of the North Burnaby Cenotaph and South Burnaby Cenotaph during Phase II. Mather’s House (Altnadene) Gate & Wall were identified for repair, but this work is of a lower priority than the other repairs noted by the consultants, and will be completed during Phase III. The Burnaby South High School Cenotaph was found to be in good condition with no repair required.

Further conservation planning is recommended for the Fairacres Estate Gate and Greenhouse Foundation Walls and the North Pacific Lumber Company ruins at Barnet Marine Park, prior to intervention. Conservation work to restore the Alta Vista Reservoir Vent is planned for 2021.

<b>Resource.</b>	<b>Repair</b>	<b>Conservation Planning</b>	<b>Conservation Works</b>
Central Park Entrance Gate	Phase II		
Jubilee Grove Arch	Phase II		
Alta Vista Reservoir Vent			Phase II
South Burnaby Cenotaph	Phase II		
Burnaby South High School Cenotaph	N/A		
North Burnaby Cenotaph	Phase II		
Fairacres Estate Gate and Fairacres Greenhouse Foundation Wall		Phase II	Phase III
Mather’s House (Altnadene) Gate & Wall	Phase III		
North Pacific Lumber Company ruins		Phase III	Phase IV

**3.2 Phase II: Repairs and Conservation Planning**

Phase II of the work is underway to implement the repair work identified as high priority by the condition assessments. A sum of \$275,000 has been allocated in the 2021-2025 Financial Plan to complete repairs in 2021 to the Central Park Entrance Gate, Jubilee Grove Arch, and North Burnaby Cenotaph, and for conservation of the Alta Vista Reservoir Vent. This phase also includes conservation planning for the Fairacres Entrance Gate and Greenhouse Foundation Wall. The following sections further describe this work.

**3.2.1 Central Park Entrance Gate**

The Central Park Entrance Gate at 3883 Imperial Street is a protected heritage resource, designated by Bylaw 9807 in 1992. The resource is located on the northern boundary of the park, facing Kingsway, adjacent to the B.C. Parkway and near where the SkyTrain Expo Line crosses Kingsway into Central Park. The B.C. Parkway in this location occupies the original right of way of the 1891 interurban railway.

To: *Community Heritage Commission*  
From: *Director Planning and Building*  
*Director Parks, Recreation and Cultural Services*  
Re: *Preservation and Repair of Cenotaphs and Heritage Landscape*  
*Features*  
2021 June 02..... Page 4

The Central Park Entrance Gate was constructed in 1913 by B.C. Electric Railway in exchange for additional right of way within the park. It consists of two massive stone pillars that originally supported a decorative wrought-iron arch with a lit sign that read “Central Park” (see *Attachment #1*). The resource also includes adjacent gate posts, and a low flanking stone wall with a cobblestone cap that curves into the park to the east (see *Attachment #2*).

The priority repair work identified in the Iredale Report for the gate pillars and posts includes extensive repointing of mortar joints, cleaning and application of a rust-proof finish to iron elements, and overall cleaning to remove organic material. The masonry work will be performed by a skilled heritage mason, following specifications developed by a heritage consultant.

The flanking wall requires repointing and repair of mortar, and cleaning to remove graffiti and organic material. Significant decay was noted in the flanking wall, particularly at the south end where it makes a 90 degree turn to the east (see *Attachment #3*). The 90 degree turn marks the site of the original B.C. Electric Railway interurban station on the west side of the tracks.

### **3.2.2 Cenotaphs**

The South Burnaby Cenotaph at 6749 Nelson Avenue, the Burnaby South High School Cenotaph at 6650 Southoaks Crescent, and the North Burnaby Cenotaph at 250 Willingdon Avenue (Confederation Park) were reviewed by Iredale, and were found to be in good condition. A minor repair to the South Burnaby Cenotaph will be completed by Parks Maintenance staff, and repairs to the North Burnaby Cenotaph will be performed by a skilled heritage mason, following specifications developed by a heritage consultant.

The North Burnaby Cenotaph was constructed in 1953 and is a protected heritage resource designated by Bylaw 9807 in 1992. The priority work identified for this resource is repointing of its mortar joints. The report also noted the original granite steps of the monument have been covered in slate (see *Attachment #3*). While the slate is stable and in good condition, future consideration could be given to removing the slate to restore the original condition of the monument.

### **3.2.3 Jubilee Grove Arch**

The Jubilee Grove Arch at 3883 Imperial Street is a ceremonial arch located at the corner of Kingsway and Patterson in Central Park (see *Attachment #4*). It was dedicated in 1935 in preparation for the celebration of the Jubilee of the coronation of King George V, and completed in 1939. The sandstone arch element was salvaged from a Vancouver building that had been demolished, and much of the labour to install the arch was performed by relief workers in Burnaby during the Great Depression. The resource was protected through Heritage Designation Bylaw 9807 in 1992.

To: *Community Heritage Commission*  
From: *Director Planning and Building*  
*Director Parks, Recreation and Cultural Services*  
Re: *Preservation and Repair of Cenotaphs and Heritage Landscape*  
*Features*  
2021 June 02..... Page 5

It consists of a sandstone arch flanked by granite walls, and also includes a plaza area and fountain. The resource is associated with the Earl and Jennie Lohn Perennial Garden and a grove of oak trees (including one tree planted in 1937 in honour of the coronation of King George VI and Queen Elizabeth in 1937).

As part of regular review and maintenance, staff observed fractures and cracks in the arch feature and deterioration of the mortar. As a result, heritage consultant team McGinn Engineering & Preservation was retained to review the resource and provide costing and specifications for repair. Required repairs include:

- **Structural stabilization of the arch feature:** rods will be inserted above the side piers of the arch structure and strength will be added to the inside soffit of the arch to increase stability.
- **Repointing the arch and flanking walls:** the mortar joints will be refilled to protect the resource from water ingress.
- **Repair and cleaning of the stone and masonry:** areas where there has been loss of sandstone will be patched, and the entire structure will be cleaned, including the granite flanking walls and the plaza and fountain area.

The cost of this work, including preparation of specifications and project management by a heritage consultant, is estimated at \$160,000, and as such is the largest project being undertaken as part of the Phase II work program. It is noted that a previous restoration and stabilization project was completed in 1994, which included inserting cable into the outer edge of the arch to increase stability.

### ***3.2.4 Conservation of the Fairacres Estate Gate and Fairacres Greenhouse Foundation Wall***

Phase II also includes conservation planning for the Fairacres Estate Gate and Fairacres Greenhouse Foundation Wall, designated heritage landscape features located at the historic Fairacres Estate property at 6344 Deer Lake Avenue.

Recent paving and urban trail upgrades to Deer Lake Avenue included installation of replica Estate Gate pillars at the location of the eastern end of the original driveway entry to the Fairacres Estate (see *Attachment #5*) and re-grading of the area adjacent to the surviving gate pillar at the original location of the western entrance to the driveway to the Fairacres Estate (see *Attachment #6*). The re-grading at this location eliminated a step, making this pathway an accessible pedestrian entry to the estate grounds. A new entry path was poured in asphalt as a temporary condition, to enable future upgrades to the path and associated landscaping in conjunction with conservation of the Fairacres Estate Gate.

Further conservation and interpretation planning for the Fairacres Estate and its heritage landscape features will include development of a conservation plan to restore the original entry gate at the western end of the original driveway, including reconstruction of the missing gate pillar and replacement of the asphalt path at the gate with materials more compatible with the historical

To: Community Heritage Commission  
From: Director Planning and Building  
Director Parks, Recreation and Cultural Services  
Re: Preservation and Repair of Cenotaphs and Heritage Landscape  
Features  
2021 June 02..... Page 6

context. The conservation plan will also recommend interventions to repair and conserve the extant gate pillar, and to stabilize and repair the Greenhouse Foundation Wall.

When the conservation plan is advanced to the Community Heritage Commission, it will be accompanied by recommendations for enhancement to the interpretation of the Fairacres Estate to include interpretation of the restored Fairacres Estate Gate and Greenhouse Foundation Wall, and to incorporate a wider range of stories into the Deer Lake interpretive signs to reflect the diversity of the site's history.

The conservation plan will be undertaken by a heritage consultant, using operating funds available through the Planning and Building Department to support the work of the Community Heritage Commission. A staff report will provide recommendations for upgrades to the site's interpretation.

### **3.3 Phase II: Conservation Work**

Restoration of the Alta Vista Reservoir Vent for re-installation at its original location at 5172 McKee Street is scheduled for completion in 2021 as part of Phase II. This resource was protected through Heritage Designation Bylaw #14228 in November 2020. A condition assessment was completed in 2020, and a heritage consultant has been retained to develop a tender package for the conservation works, and to assist with contract administration.

### **3.4 Phase III and Phase IV**

The phased approach outlined in this report includes study and assessment in Phase I, followed by priority repairs, conservation planning, and conservation work in Phase II. Phases III and IV will include completion of required repairs, additional conservation planning, and implementation of conservation work as approved by Council upon recommendation of the Community Heritage Commission. Funding for the additional repairs, conservation planning, and conservation works to be completed in Phase III and IV will be requested through the City's 5-year financial planning process.

#### **3.4.1 Future Repair and Conservation Work**

Plans for Phase III include repair of the Mather's House (Altnadene) Gate & Wall. Suggested actions included cleaning and repointing of masonry joints. As outlined in *Section 3.2.4*, conservation of the Fairacres Estate landscape would take place in Phase III, subject to funding approval of Council. As outlined in *Section 3.3.2* below, conservation and interpretive planning for the North Pacific Lumber Company Ruins are planned for Phase III, and repair and conservation of that resource would form Phase IV of the project, also subject to the approval of Council.

To: Community Heritage Commission  
From: Director Planning and Building  
Director Parks, Recreation and Cultural Services  
Re: Preservation and Repair of Cenotaphs and Heritage Landscape  
Features  
2021 June 02..... Page 7

### 3.4.2 Future Conservation Planning

The condition of the North Pacific Lumber Company ruins at Barnet Marine Park were reviewed by Iredale, including the engine stand and the base of the sawmill burner (see *Attachment #7*). These resources are on the City's heritage inventory, but a commitment to their long term preservation has not been made through a heritage designation bylaw.

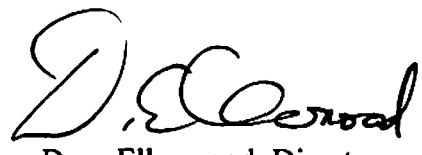
A heritage consultant will be retained in Phase III to guide the City in a process to consider the future retention, interpretation, and use of these resources, including identifying conservation works required for their retention. Recommendations from the study will be advanced to Council upon recommendation of the Community Heritage Commission. Conservation work supported by Council and included in the 5-Year Financial Plan would form Phase IV of the project.

Ongoing monitoring, repair, and conservation planning for the City's cenotaphs and heritage landscape resources will continue past 2025, as staff continue to monitor the condition of these resources and identify repairs, and as new opportunities for preservation and interpretation of the City's civic heritage resources emerge.

## 4.0 CONCLUSION

This report outlines a four-phase program for assessment, repair, conservation planning, and conservation of several cenotaphs and heritage landscape features located in City of Burnaby parks. This work will improve the condition and advance conservation and interpretation of valued civic heritage resources. It is recommended that the Committee forward this report to Council for information, and request that Council further forward the report to the Parks, Recreation and Culture Commission for their information.

  
E. W. Kozak, Director  
PLANNING AND BUILDING

  
Dave Ellenwood, Director  
PARKS, RECREATION AND  
CULTURAL SERVICES

LC:sa  
**Attachments**

cc: Acting City Manager  
Director Corporate Services  
Director Engineering  
Director Finance  
City Clerk



*Attachment #1*



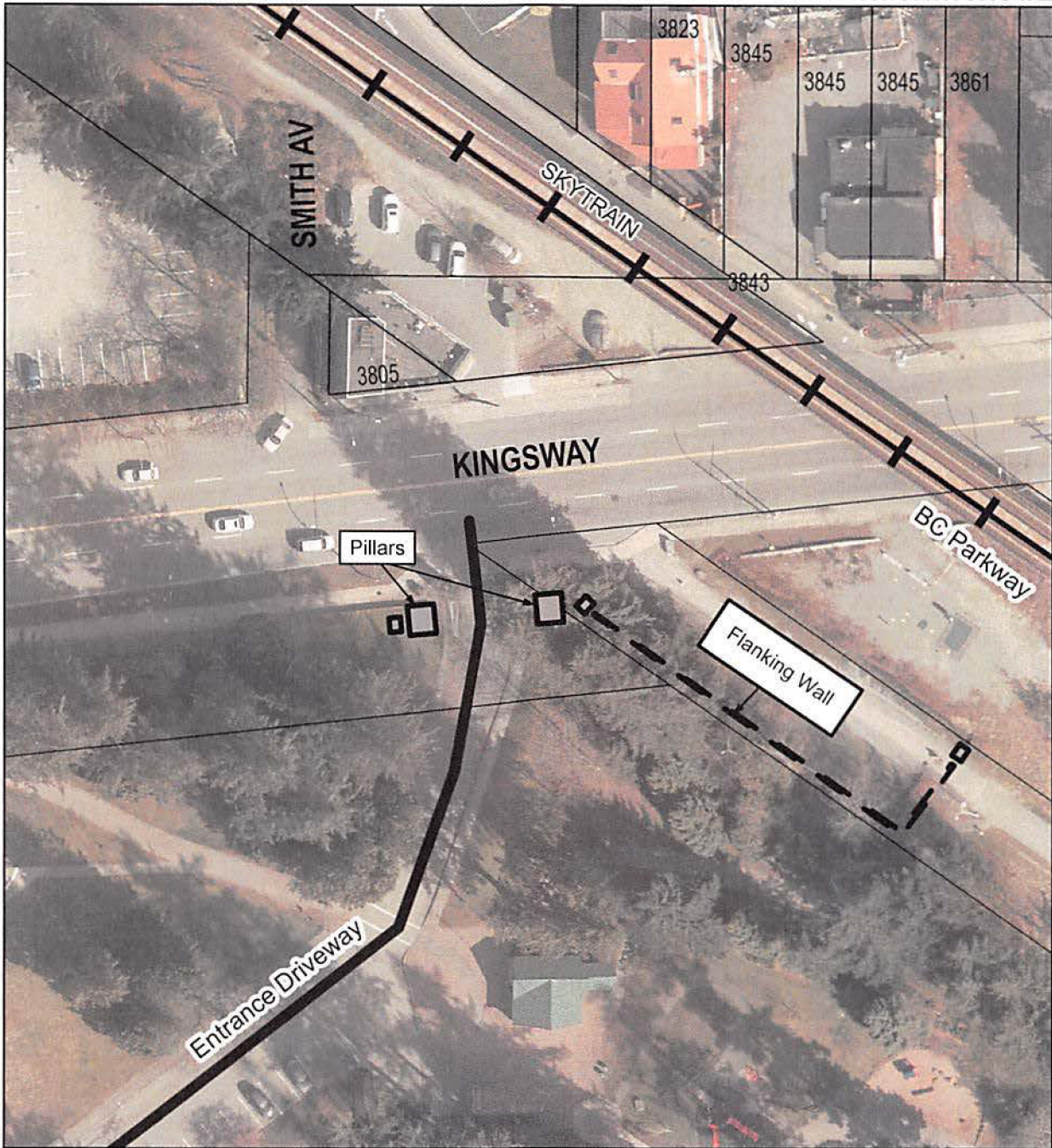
The Central Park Entrance Gate in 1914, shortly after it was constructed. A lit sign was mounted on a wrought iron arch between the gate pillars (CBA 449-002)



Current condition of the Central Park Entrance Gate pillars



Flanking wall of the Central Park Entrance Gate feature



PLANNING & BUILDING DEPARTMENT

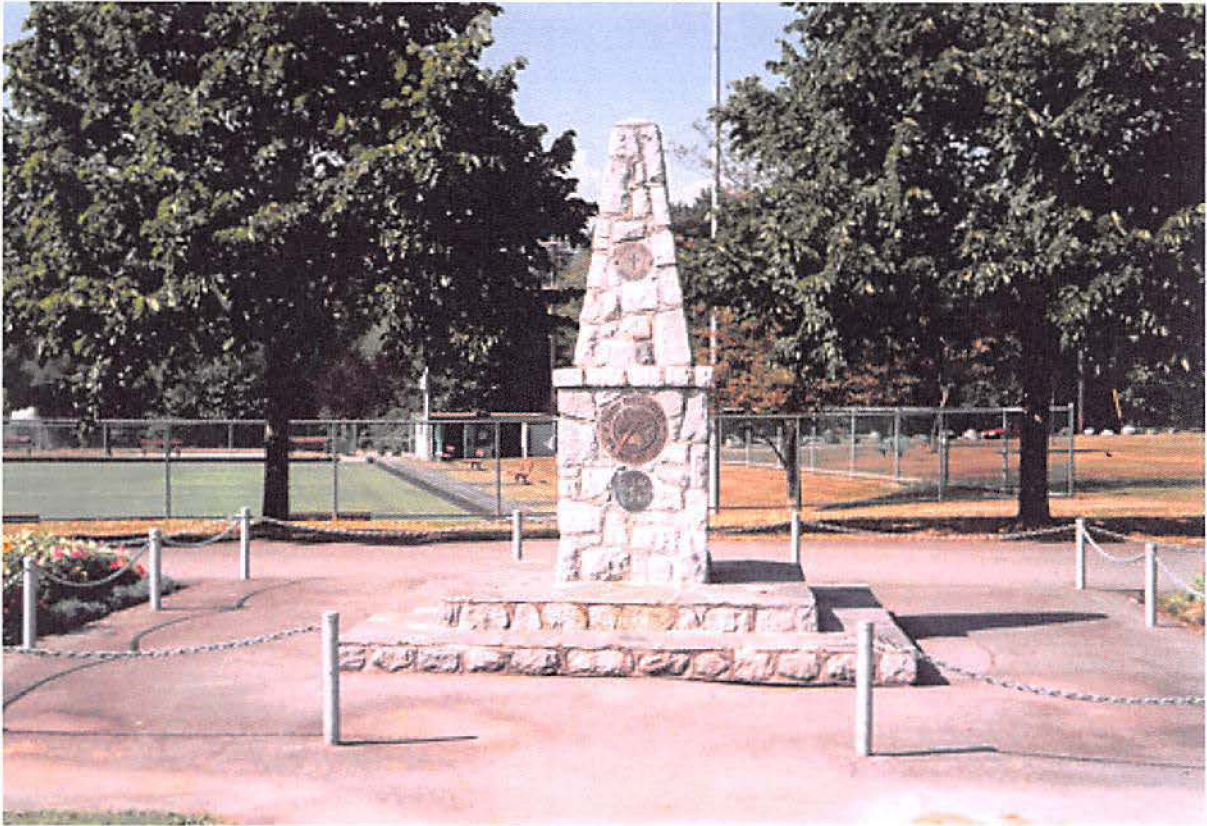


Date: MAY 18 2021

scale: 1:800

Drawn By: RW

### Central Park Entrance Gate Location of Components



The North Burnaby Cenotaph



The Jubilee Grove Arch



Detail image of area to be repaired through repointing of masonry and stabilization to prevent fractures



Replica gate pillars adjacent to the driveway to the Shadbolt Centre surface parking lot

*Attachment #6*



Extant gate post adjacent to the entry driveway to the Burnaby Art Gallery parking lot

*Attachment #7*



Engine stand base from the North Pacific Lumber Mill at Barnet Marine Park.



Remains of the sawmill burner from the North Pacific Lumber Mill at Barnet Marine Park