

CITY OF BURNABY

BYLAW NO. 12991

A BYLAW to close and remove the dedication of
certain portions of highway

WHEREAS pursuant to section 40 of the *Community Charter*, SBC 2003 and section 120 of the *Land Title Act* the Council may by bylaw close part of a highway to traffic and remove the dedication of that part of the highway;

AND WHEREAS the Council, before adopting this Bylaw, has caused the required statutory public notice of its intention to be given by advertisement;

AND WHEREAS the Council deems it expedient and in the public interest to stop up and close to traffic and remove the dedication of those portions of highway more particularly hereinafter described;

NOW THEREFORE the Council of the City of Burnaby ENACTS as follows:

1. This Bylaw may be cited as **BURNABY HIGHWAY CLOSURE BYLAW NO. 5, 2011.**
2. ALL AND SINGULAR those certain parcels or tracts of land, situate, lying and being in the City of Burnaby, in the Province of British Columbia, more particularly known and described as all those portions of road in District Lot 69, Group 1, New Westminster District:
 - (a) dedicated as lane by Plan BCP11613 containing 71.5 m²,
 - (b) dedicated as lane by Plan 1321 containing 190.9 m²,
 - (c) dedicated as road by Plan 84314 containing 30.4 m², and
 - (d) dedicated as road by Plan 1321 containing 270.6 m²

(hereinafter called "the closed portions of road") shown outlined and described as Parcel 1, Parcel 2, Parcel 3 and Parcel 4 on Reference Plan prepared by Louis S.Y. Ngan, B.C.L.S., and deposited in the Land Title Office under Number BCP _____, a copy of which is hereunto annexed, are hereby closed to all types of traffic.

3. The dedication of the closed portions of road as highway is removed.

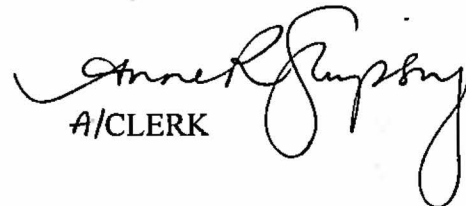
Read a first time this 29th day of August 2011

Read a second time this 29th day of August 2011

Read a third time this 29th day of August 2011

Reconsidered and adopted this 7th day of November 2011


MAYOR


A/CLERK

REFERENCE PLAN TO ACCOMPANY CITY OF BURNABY HIGHWAY CLOSING BYLAW NO. _____
 TO CLOSE AND REMOVE PART OF ROAD DEDICATED ON PLAN 1321, PLAN 84314 AND PLAN BCP11613
 BLOCK 33, DISTRICT LOT 69, GROUP 1, NEW WESTMINSTER DISTRICT

Pursuant to Section 120, Land Title Act and Section 40, Community Charter

BCGS 92G.025

SCALE 1 : 500



All distances are in metres.

The intended plot size of this plan is 560mm in width by 432mm in height (C size) when plotted at a scale of 1 : 500.

PLAN BCP _____

Deposited in the Land Title Office at New Westminster, B.C.

This _____ day of _____, 2011

REGISTRAR

REF.: _____

CITY OF BURNABY

Authorized Signatory _____

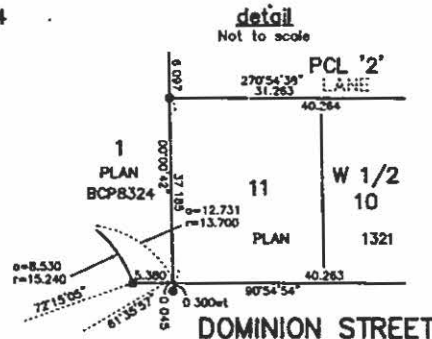
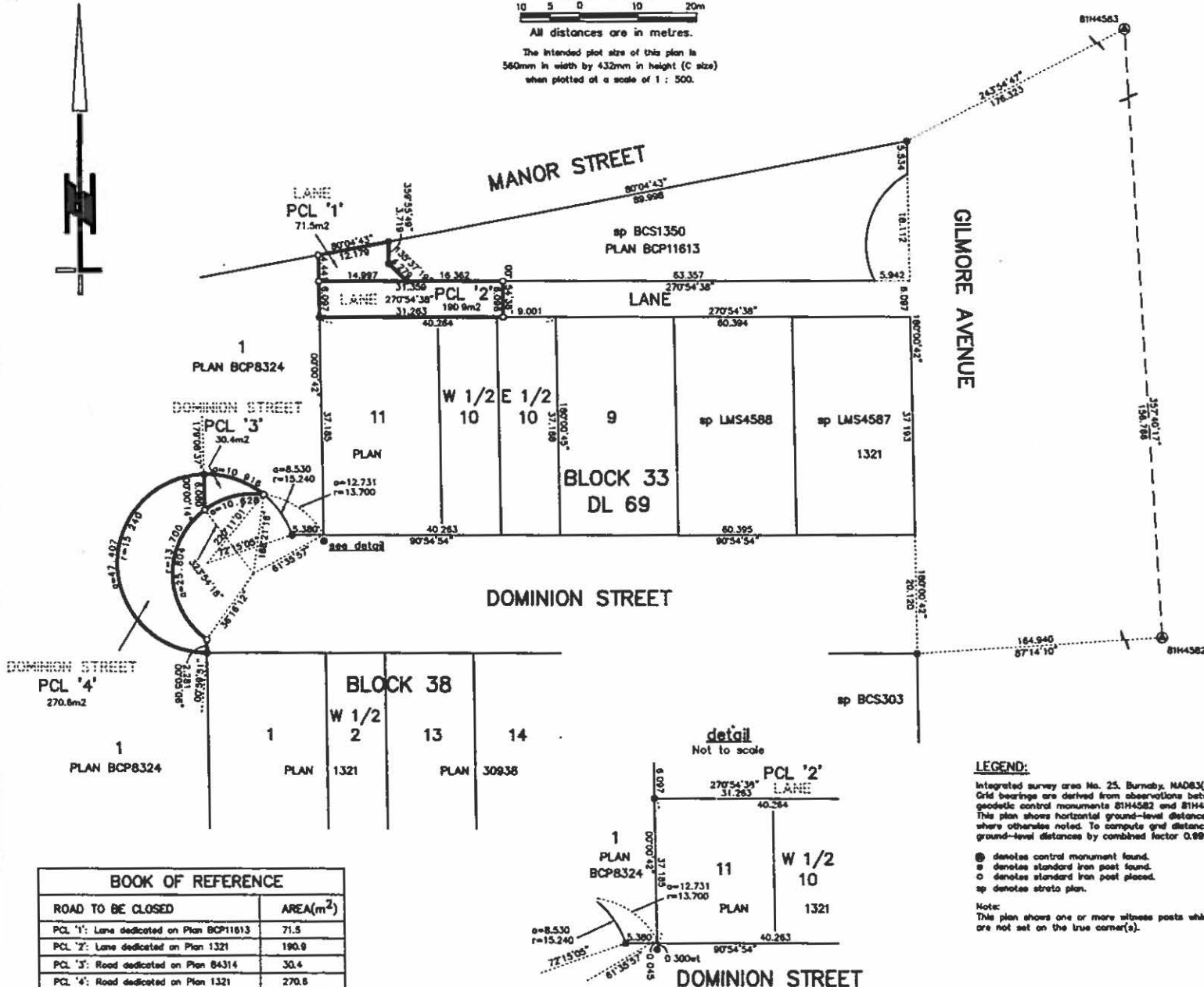
Authorized Signatory _____

Witness _____

Name _____

Address _____

Occupation _____



BOOK OF REFERENCE	
ROAD TO BE CLOSED	AREA(m ²)
PCL '1': Lane dedicated on Plan BCP11613	71.5
PCL '2': Lane dedicated on Plan 1321	190.9
PCL '3': Road dedicated on Plan 84314	30.4
PCL '4': Road dedicated on Plan 1321	270.6

LEGEND:

Integrated survey area No. 25, Burnaby, MAD83(CSRS). Grid bearings are derived from observations between geodetic control monuments B1H4582 and B1H4583. This plan shows horizontal ground-level distances except where otherwise noted. To compute grid distances, multiply ground-level distances by combined factor 0.99256645.

- ⊙ denotes control monument found.
- ⊙ denotes standard iron post found.
- denotes standard iron post placed.
- sp denotes stroto plan.

Note:
This plan shows one or more witness posts which are not set on the true corner(s).

I, LOUIS S.Y. NGAN, a British Columbia land surveyor, certify that I was present at and personally supervised the survey represented by this plan, and that the survey and plan are correct. The field survey was completed on the 20th day of July, 2011. The plan was completed and checked, and the checklist filed under #125558, on the 20th day of July, 2011.

B.C.L.S.

This plan lies within the Greater Vancouver Regional District

LOUIS NGAN LAND SURVEYING

4938 VICTORIA DRIVE
 VANCOUVER, B.C., V5P 3T6
 (804) 327-1535



FILE: BDO-4025REF