

CITY OF BURNABY

BYLAW NO. 12804

A BYLAW to amend Bylaw No. 4742, being
Burnaby Zoning Bylaw 1965

WHEREAS application for rezoning has been made to the Council;

AND WHEREAS the Council has held a public hearing thereon after duly giving notice of the time and place of such hearing as prescribed by Sections 892 and 893 of the *Local Government Act*, R.S.B.C. 1996;

NOW THEREFORE the Council of the City of Burnaby ENACTS as follows:

1. This Bylaw may be cited as **BURNABY ZONING BYLAW 1965, AMENDMENT BYLAW NO. 18, 2010.**
2. The Map (hereinafter called "Map 'A'"), attached to and forming an integral part of Bylaw No. 4742, being "Burnaby Zoning Bylaw 1965", and designated as the Official Zoning Map of the City of Burnaby, is hereby amended according to the Map (hereinafter called "Map 'B'"), marginally numbered R.Z. 3792 annexed to this Bylaw, and in accordance with the explanatory legend, notations, references and boundaries designated, described, delimited and specified in particularity shown upon said Map 'B'; and the various boundaries and districts shown upon said Map 'B' respectively are an amendment of and in substitution for the respective districts, designated and marked on said Map 'A' insofar as the same are changed, modified or varied thereby, and the said Map 'A' shall be deemed to be and is hereby declared to be amended accordingly and the said Map 'B' is hereby declared to be and shall form an integral part of said Map 'A', as if originally incorporated therein and shall be interpreted accordingly.

3. The Comprehensive Development Plan entitled "DAYCARE 3430 - 3440 BOUNDARY ROAD" prepared by CHERCOVER MASSIE & ASSOCIATES LTD. and on file in the office of the Director Planning and Building, is deemed to be attached to and form part of this Bylaw and any development on the lands rezoned by this Bylaw shall be in conformity with the said Comprehensive Development Plan.

Read a first time this 14th day of June 2010

Read a second time this 12th day of July 2010

Read a third time this 30th day of August 2010

Reconsidered and adopted this 30th day of August 2010

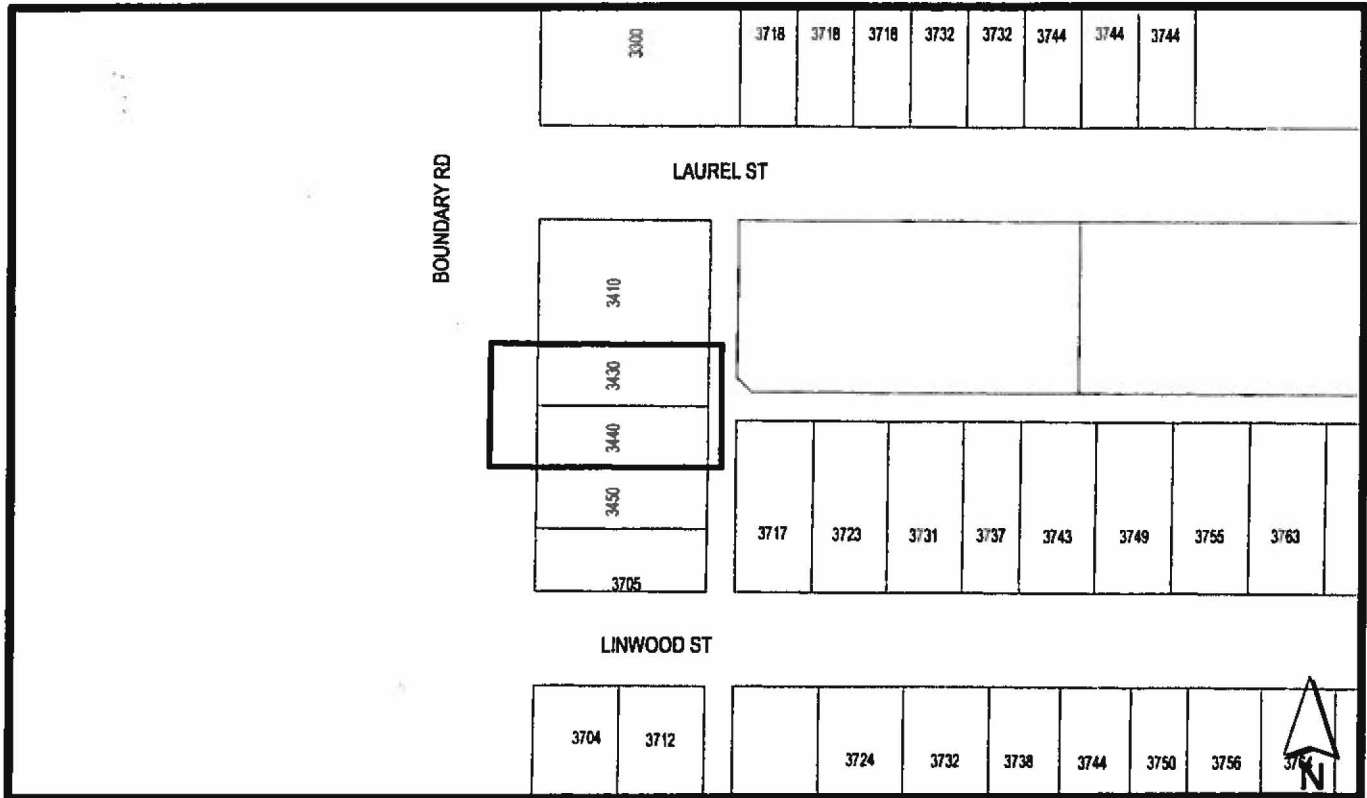

MAYOR


D. CLERK

BYLAW NUMBER 12804 BEING A BYLAW TO AMEND BYLAW
 NUMBER 4742 BEING BURNABY ZONING BYLAW 1965

REZ. 10-09


LEGAL: Lots 3 & 4, Block 4, D.L. 68, Group 1, NWD Plan 980



THE AREA(S) SHOWN ABOVE OUTINED IN BLACK (————) IS (ARE) REZONED

FROM: P8 Parking District and C1 Neighbourhood Commercial District

TO: CD Comprehensive Development District (based on P1 Neighbourhood Institutional District and Community Plan Eight guidelines, and in accordance with the development plan entitled "Daycare 3430 - 3440 Boundary Road" prepared by Chercover Massie & Associates Ltd.)

	PLANNING & BUILDING DEPARTMENT	
DATE: APR 30 2010	<p style="text-align: center;">OFFICIAL ZONING MAP</p> <p style="text-align: right;">Map "B" No. REZ. 3792</p>	
SCALE: 1:1,617		
DRAWN BY: DJ		