

CITY OF BURNABY

BYLAW NO. 12798

A BYLAW to close and remove the dedication of
certain portions of highway

WHEREAS pursuant to section 40 of the *Community Charter* and section 120 of the *Land Title Act* the Council may by bylaw close part of a highway to traffic and remove the dedication of that part of the highway;

AND WHEREAS the Council, before adopting this Bylaw, has caused the required statutory public notice of its intention to be given by advertisement;

AND WHEREAS the Council deems it expedient and in the public interest to stop up and close to traffic and remove the dedication of those portions of highway more particularly hereinafter described;

NOW THEREFORE the Council of the City of Burnaby ENACTS as follows:

1. This Bylaw may be cited as **BURNABY HIGHWAY CLOSURE BYLAW NO.5, 2010.**

2. ALL AND SINGULAR those certain parcels or tracts of land, situate, lying and being in the City of Burnaby, in the Province of British Columbia, more particularly known and described as all those portions of road in District Lot 216, Group 1, New Westminster District:
 - (a) dedicated as road by Plan 3083 containing 179.2m², and
 - (b) dedicated as road by Plan 10936 containing 439.6m².

(hereinafter called "the closed portions of road") shown outlined and described as Pcl. A, and Pcl. B,

(hereinafter called "the closed portions of road") shown outlined and described as Pcl. A, and Pcl. B, on Reference Plan prepared by G.A. Rowbotham, B.C.L.S., dated the 7th day of May, 2010 and deposited in the Land Title Office under Number BCP _____, a copy of which is hereunto annexed are hereby closed to all types of traffic.

3. The dedication of the closed portions of road as highway is removed.


Read a first time this 17th day of May 2010

Read a second time this 17th day of May 2010

Read a third time this 17th day of May 2010

Reconsidered and adopted this 28th day of June 2010


MAYOR


CLERK

REFERENCE PLAN TO ACCOMPANY CITY OF BURNABY HIGHWAY DEDICATION CANCELLATION BYLAW No. _____
 OF PORTIONS OF HIGHWAY LYING IN DISTRICT LOT 216 GROUP 1 N.W.D. DEDICATED ON PLANS 3083 AND 10936

PLAN BCP _____

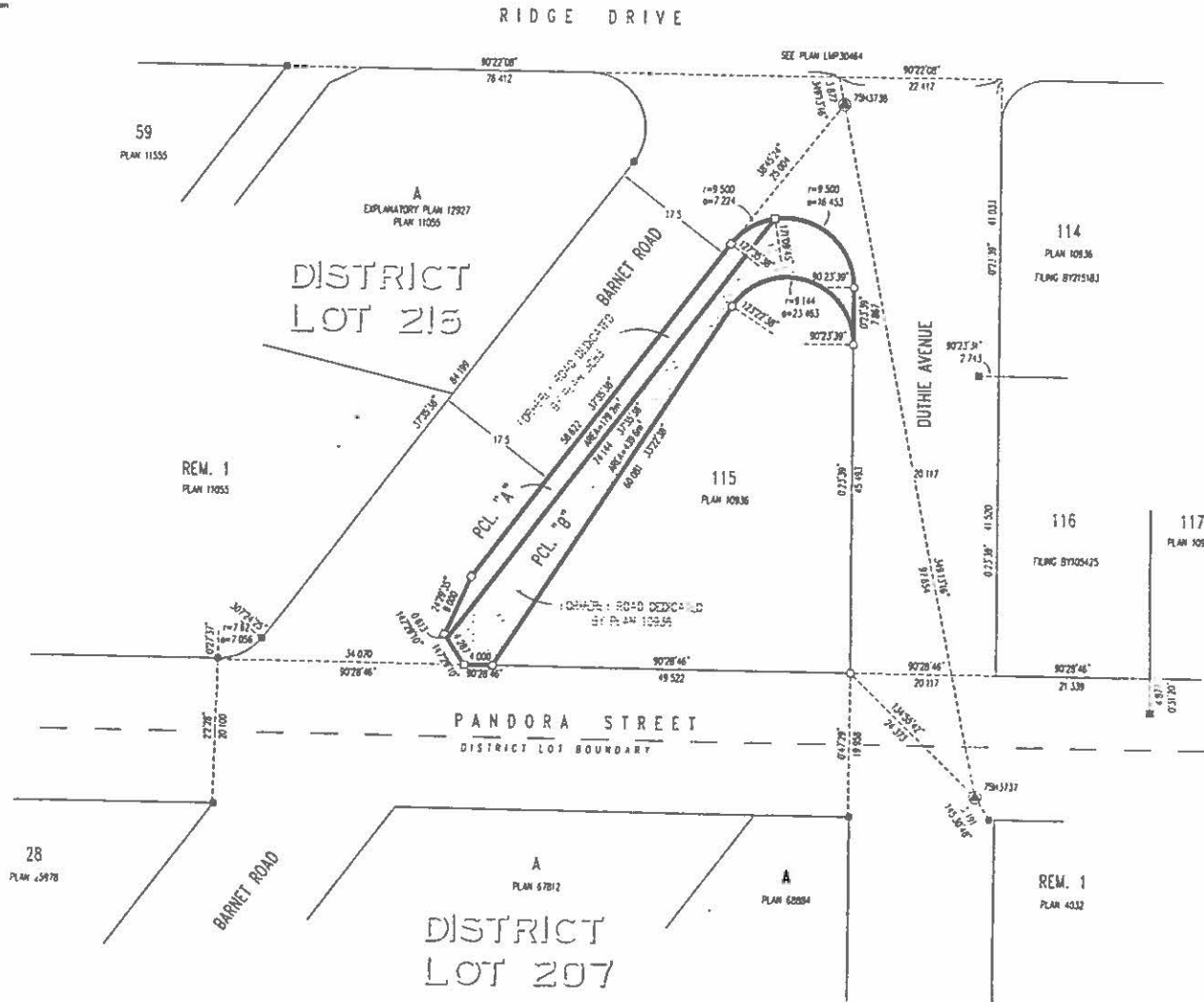
PURSUANT TO SECTION 120 L.T.A. AND SECTION 40 COMMUNITY CHARTER

0 5 10 20 30
 ALL DISTANCES ARE IN METRES AND DISTANCES THEREOF UNLESS OTHERWISE NOTED

The intended plot size of this plan is 550mm in width by 432mm in height (C Size) when plotted at a scale of 1:500



INTEGRATED SURVEY AREA
 No 25 (BURNABY) MADS (CSRS)
 BCOS 926 026



DEPOSITED IN THE LAND TITLE OFFICE AT
 NEW WESTMINSTER, B.C.
 THIS _____ DAY OF _____, 2010

DEPUTY REGISTRAR

CITY OF BURNABY

WARDEN

CITY CLERK

WITNESS

ADDRESS AND OCCUPATION OF WITNESS

THIS PLAN LIES WITHIN GREATER
 VANCOUVER REGIONAL DISTRICT

I, G. A. ROWBOTHAM, A BRITISH COLUMBIA LAND SURVEYOR,
 OF SURREY, IN BRITISH COLUMBIA, CERTIFY THAT I WAS PRESENT AT
 AND PERSONALLY SUPERVISED THE SURVEY REPRESENTED BY
 THIS PLAN, AND THAT THE SURVEY AND PLAN ARE CORRECT.
 THE FIELD SURVEY WAS COMPLETED ON THE 7TH DAY OF
MAY, 2010. THE PLAN WAS COMPLETED
 AND CHECKED, AND THE CHECKLIST FILED UNDER 118023
 ON THE 7TH DAY OF MAY, 2010.

G.A. Rowbotham

BCL5

- LEGEND
- INDICATES STANDARD IRON POST FOUND
 - LEAD PLUG FOUND
 - STANDARD IRON POST PLACED
 - ⊙ CONTROL WORKMANS FOUND
 - LEAD PLUG SET

GRID BEARINGS ARE DERIVED FROM OBSERVATIONS
 BETWEEN GEODETIC CONTROL WORKMANS 75H3737 AND 75H3738

THIS PLAN SHOWS HORIZONTAL GROUND LEVEL MEASURED DISTANCES
 EXCEPT WHERE OTHERWISE NOTED. TO COMPUTE GRID DISTANCES,
 MULTIPLY GROUND LEVEL DISTANCES BY THE COMBINED FACTOR 0.9995879

REFERENCE PLAN TO ACCOMPANY CITY OF BURNABY HIGHWAY DEDICATION CANCELLATION BYLAW No. _____
 OF PORTIONS OF HIGHWAY LYING IN DISTRICT LOT 216 GROUP 1 N.W.D. DEDICATED ON PLANS 3083 AND 10936

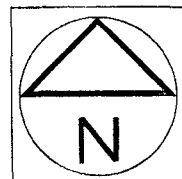
PLAN BCP _____

PURSUANT TO SECTION 120 L.T.A. AND SECTION 40 COMMUNITY CHARTER

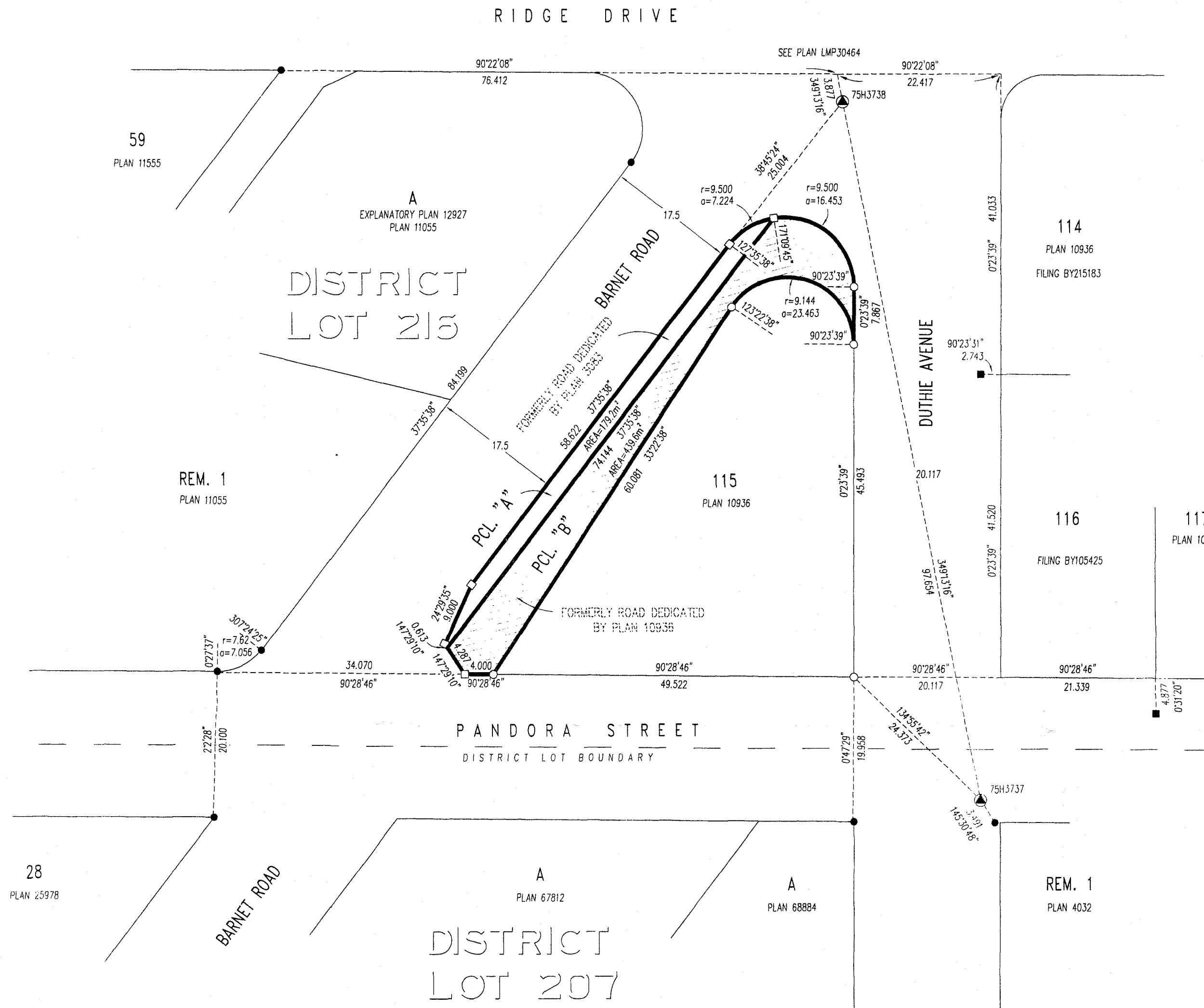
DEPOSITED IN THE LAND TITLE OFFICE AT
 NEW WESTMINSTER, B.C.
 THIS _____ DAY OF _____, 2010.

0 5 10 20 30
 ALL DISTANCES ARE IN METRES AND DISTANCES
 THEREOF UNLESS OTHERWISE NOTED.

The intended plot size of this plan is 559mm
 in width by 432mm in height (C Size)
 when plotted at a scale of 1:500



INTEGRATED SURVEY AREA
 No.25 (BURNABY) NAD83 (CSRS)
 BCGS 92G 026



DEPUTY REGISTRAR

CITY OF BURNABY

MAYOR

CITY CLERK

WITNESS

ADDRESS AND OCCUPATION OF WITNESS :

- LEGEND
- INDICATES STANDARD IRON POST FOUND
 - " LEAD PLUG FOUND
 - " STANDARD IRON POST PLACED
 - ⊙ " CONTROL MONUMENT FOUND
 - " LEAD PLUG SET

GRID BEARINGS ARE DERIVED FROM OBSERVATIONS
 BETWEEN GEODETIC CONTROL MONUMENTS 75H3737 AND 75H3738

THIS PLAN SHOWS HORIZONTAL GROUND LEVEL MEASURED DISTANCES
 EXCEPT WHERE OTHERWISE NOTED, TO COMPUTE GRID DISTANCES,
 MULTIPLY GROUND LEVEL DISTANCES BY THE COMBINED FACTOR 0.9995879.

THIS PLAN LIES WITHIN GREATER
 VANCOUVER REGIONAL DISTRICT

I, G. A. ROWBOTHAM, A BRITISH COLUMBIA LAND SURVEYOR,
 OF SURREY, IN BRITISH COLUMBIA, CERTIFY THAT I WAS PRESENT AT
 AND PERSONALLY SUPERINTENDED THE SURVEY REPRESENTED BY
 THIS PLAN, AND THAT THE SURVEY AND PLAN ARE CORRECT.
 THE FIELD SURVEY WAS COMPLETED ON THE 7th DAY OF
MAY, 2010. THE PLAN WAS COMPLETED
 AND CHECKED, AND THE CHECKLIST FILED UNDER # 110023
 ON THE 7th DAY OF MAY, 2010.

G.A. Rowbotham

BCLS