

CITY OF BURNABY

BYLAW NO. 12740

A BYLAW to amend Bylaw No. 4742, being
Burnaby Zoning Bylaw 1965

WHEREAS application for rezoning has been made to the Council;

AND WHEREAS the Council has held a public hearing thereon after duly giving notice of the hearing as prescribed by sections 892 and 893 of the *Local Government Act*, R.S.B.C. 1996;

NOW THEREFORE the Council of the City of Burnaby ENACTS as follows:

1. This Bylaw may be cited as **BURNABY ZONING BYLAW 1965, AMENDMENT BYLAW NO. 49, 2009.**
2. The map (hereinafter called "Map 'A'") attached to and forming an integral part of Bylaw No. 4742, being Burnaby Zoning Bylaw 1965, and designated as the Official Zoning Map of the City of Burnaby, is hereby amended according to the Map (hereinafter called "Map 'B'"), marginally numbered R.Z. 3770 annexed to this Bylaw, and in accordance with the explanatory legend, notations, references and boundaries designated, described, delimited and specified in particularity shown upon said Map 'B', and the various boundaries and districts shown upon said Map 'B', respectively are an amendment of and in substitution for the respective districts, designated and marked on said Map 'A' insofar as the same are changed, modified or varied thereby, and the said Map 'A' shall be deemed to be and is hereby declared to be amended accordingly and the said Map 'B' is

hereby declared to be and shall form an integral part of said Map 'A' as if originally incorporated therein and shall be interpreted accordingly.

Read a first time this 23rd day of November 2009

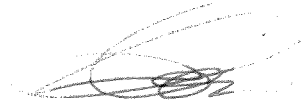
Read a second time this 18th day of January 2010

Read a third time this 15th day of February 2010

Reconsidered and adopted this 15th day of February 2010



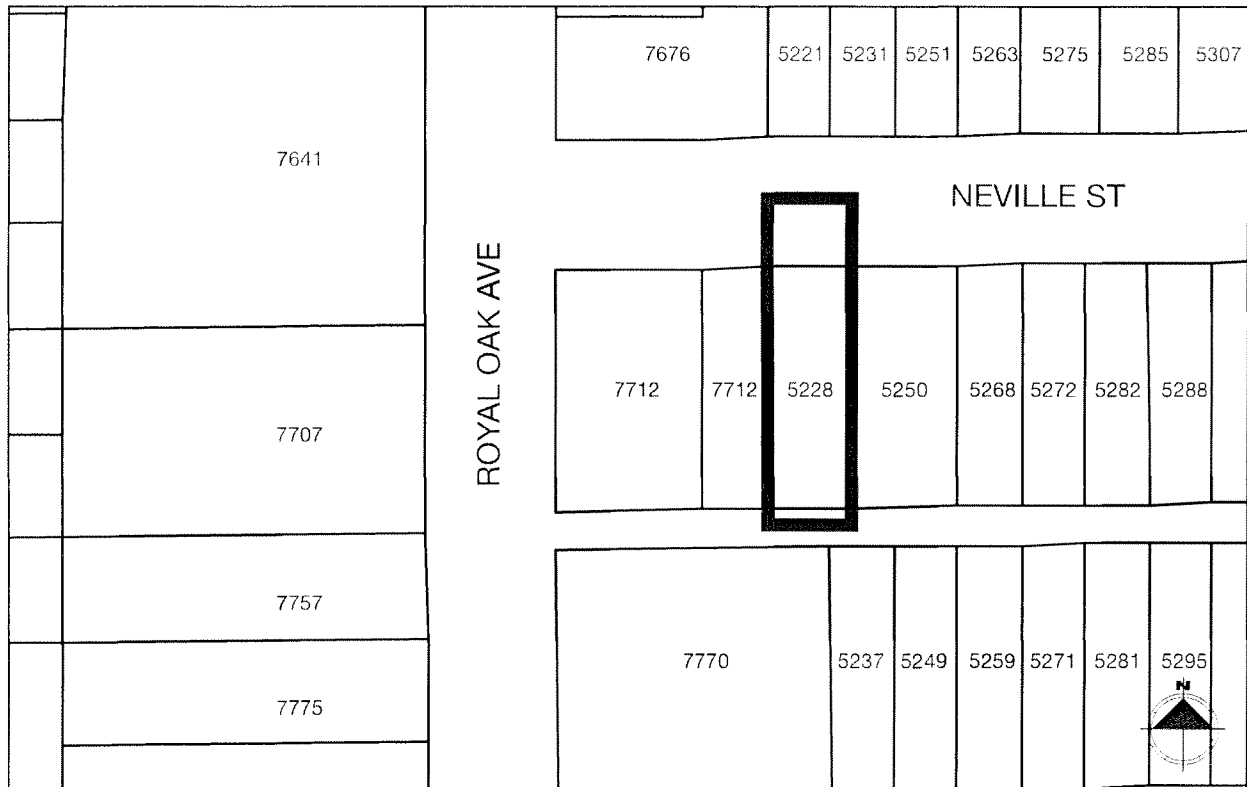
MAYOR



CLERK

**BYLAW NUMBER 12740 BEING A BYLAW TO AMEND BYLAW
NUMBER 4742 BEING BURNABY ZONING BYLAW 1965**


LEGAL: Parcel "B" (EP14458), Lots 2 & 3, Blk 13, D.L. 158, Group 1, NWD
Plan 1908



THE AREA(S) SHOWN ABOVE OUTLINED IN BLACK (—) IS (ARE) REZONED

FROM: C2 Community Commercial District

TO: R5 Residential District

		PLANNING & BUILDING DEPARTMENT	
DATE:	2009 11	OFFICIAL ZONING MAP	
SCALE:	1" = 50'		
DRAWN BY:	WCD		
		Map "B"	NO. REZ. 3770