

**CITY OF BURNABY**

**BYLAW NO. 12688**

A BYLAW to amend Bylaw No. 4742, being  
Burnaby Zoning Bylaw 1965

WHEREAS application for rezoning has been made to the Council;

AND WHEREAS the Council has held a public hearing thereon after duly giving notice of the hearing as prescribed by sections 892 and 893 of the *Local Government Act*, R.S.B.C. 1996;

NOW THEREFORE the Council of the City of Burnaby ENACTS as follows:

1. This Bylaw may be cited as **BURNABY ZONING BYLAW 1965, AMENDMENT BYLAW NO. 39, 2009.**
  
2. The map (hereinafter called "Map 'A'") attached to and forming an integral part of Bylaw No. 4742, being Burnaby Zoning Bylaw 1965, and designated as the Official Zoning Map of the City of Burnaby, is hereby amended according to the Map (hereinafter called "Map 'B'"), marginally numbered R.Z. 3763 annexed to this Bylaw, and in accordance with the explanatory legend, notations, references and boundaries designated, described, delimited and specified in particularity shown upon said Map 'B', and the various boundaries and districts shown upon said Map 'B', respectively are an amendment of and in substitution for the respective districts, designated and marked on said Map 'A' insofar as the same are changed, modified or varied thereby, and the said Map 'A' shall be deemed to be and is hereby declared to be amended accordingly and the said Map 'B' is

hereby declared to be and shall form an integral part of said Map 'A' as if originally incorporated therein and shall be interpreted accordingly.

Read a first time this 31<sup>st</sup> day of August 2009

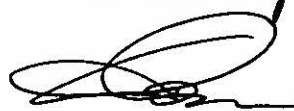
Read a second time this 5<sup>th</sup> day of October 2009

Read a third time 19<sup>th</sup> day of October 2009

Reconsidered and adopted this 19<sup>th</sup> day of October 2009



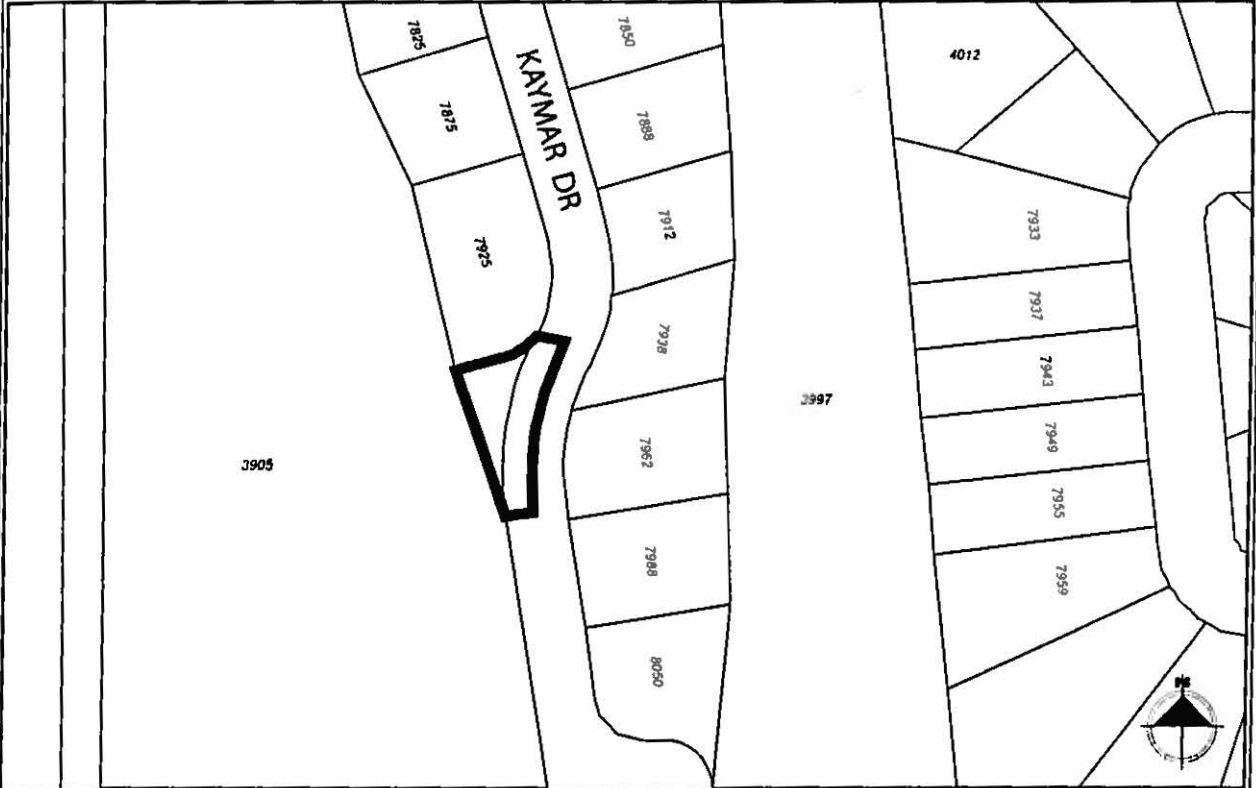
MAYOR



CLERK

**BYLAW NUMBER 12688 BEING A BYLAW TO AMEND BYLAW NUMBER 4742 BEING BURNABY ZONING BYLAW 1965**

**LEGAL: Part shown "park" on Plan 14575**



**THE AREA(S) SHOWN ABOVE OUTLINED IN BLACK ( ——— ) IS (ARE) REZONED FROM: R2 Residential District**

**TO: P3 Park and Public Use District**



**PLANNING & BUILDING DEPARTMENT**

**DATE: 2009 07**

**SCALE: n.t.s.**

**DRAWN BY: rcn**

**OFFICIAL ZONING MAP**

**Map "B"  
NO. REZ. 3763**