

CITY OF BURNABY

BYLAW NO. 12600

A BYLAW to close and remove the dedication of
certain portions of highway

WHEREAS pursuant to section 40 of the *Community Charter* and section 120 of the *Land Title Act* the Council may by bylaw close part of a highway to traffic and remove the dedication of that part of the highway;

AND WHEREAS the Council, before adopting this Bylaw, has caused the required statutory public notice of its intention to be given by advertisement;

AND WHEREAS the Council deems it expedient and in the public interest to stop up and close to traffic and remove the dedication of those portions of highway more particularly hereinafter described;

NOW THEREFORE the Council of the City of Burnaby ENACTS as follows:

1. This Bylaw may be cited as **BURNABY HIGHWAY CLOSURE BYLAW NO. 3, 2009.**
2. ALL AND SINGULAR those certain parcels or tracts of land, situate, lying and being in the City of Burnaby, in the Province of British Columbia, more particularly known and described as all those portions of road in District Lot 95, Group 1, New Westminster District:
 - (a) dedicated as road by Plan BCP34319 containing 190.5m²;
 - (b) dedicated as road by Plan 29427 containing 108.5m²;
 - (c) dedicated as road by Plan 1981 containing 202.4m²;
 - (d) dedicated as road by Plan 1981 containing 893.6m²; and
 - (e) dedicated as road by Plan 1981 containing 117.9m²,

(e) dedicated as road by Plan 1981 containing 117.9m²,

(hereinafter called "the closed portions of road") shown outlined and described as Pcl. A, Pcl. B, Pcl. C, Pcl. D and Pcl. E on Reference Plan prepared by Grant Butler, B.C.L.S., and deposited in the Land Title Office under Number BCP _____, a copy of which is hereunto annexed are hereby closed to all types of traffic.

3. The dedication of the closed portions of road as highway is removed.

Read a first time this 16th day of February 2009

Read a second time this 16th day of February 2009

Read a third time this 16th day of February 2009

Reconsidered and adopted this 6th day of April 2009


MAYOR


CLERK

**REFERENCE PLAN TO ACCOMPANY CITY OF BURNABY
ROAD CLOSING BYLAW NUMBER _____ OF PART OF ROAD DEDICATED ON PLAN BCP34319,
PART OF ROAD DEDICATED ON PLAN 29427 AND
PARTS OF ROAD DEDICATED ON PLAN 1981,
ALL OF DISTRICT LOT 95 GROUP 1 NEW WESTMINSTER DISTRICT**

PLAN BCP

DEPOSITED IN THE LAND TITLE OFFICE
AT NEW WESTMINSTER, B.C.
THIS _____ DAY OF _____ 2009

PURSUANT TO SECTION 120 OF THE LAND TITLE ACT
AND SECTION 40 OF THE COMMUNITY CHARTER
B.C.G.S. 92G.026

SCALE 1:600 DISTANCES ARE IN METRES

INTEGRATED SURVEY AREA NO. 25 (CITY OF BURNABY)
NAD83(CSRS)

THIS PLAN SHOWS HORIZONTAL GROUND-LEVEL DISTANCES EXCEPT
WHERE OTHERWISE NOTED. TO COMPUTE GRID DISTANCES, MULTIPLY
GROUND-LEVEL DISTANCES BY CORRECTION FACTOR 0.9995885

LEGEND

GRID BEARINGS ARE DERIVED FROM OBSERVATIONS BETWEEN
GEODETIC CONTROL MONUMENTS BH41487 AND BH41488
FOUND PLACED

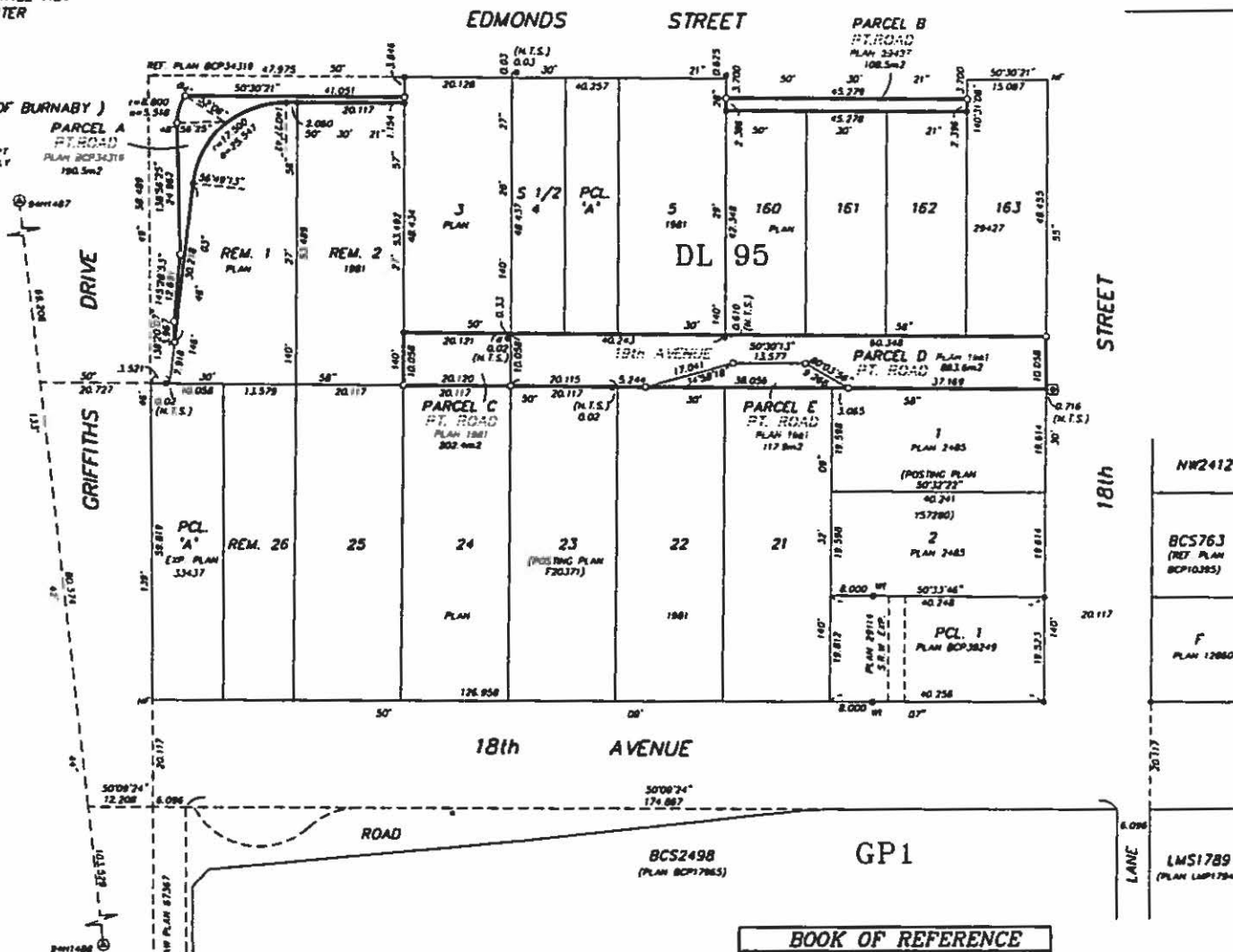
- ⊙ DENOTES CONTROL MONUMENT
- ⊕ DENOTES NON-STANDARD ROUND IRON POST
- ⊖ DENOTES IRON POST
- ⊙ DENOTES SQUARE METRES
- M DENOTES METRES
- FT DENOTES FEET
- N.T.S. DENOTES NOT TO SCALE



CITY OF BURNABY

AUTHORIZED SIGNATORY

AUTHORIZED SIGNATORY
WITNESS AS TO BOTH SIGNATURES
Name _____
Address _____
Occupation _____



I, GRANT BUTLER, A BRITISH COLUMBIA LAND SURVEYOR,
OF DELTA, BRITISH COLUMBIA, CERTIFY THAT I WAS
PRESENT AT AND PERSONALLY SUPERVISED THE SURVEY
REPRESENTED BY THIS PLAN AND THAT THE SURVEY AND
PLAN ARE CORRECT. THE FIELD SURVEY WAS COMPLETED ON
THE 4th DAY OF FEBRUARY, 2009. THE PLAN WAS COMPLETED
AND CHECKED, AND THE CHECKLIST FILED UNDER ECP 482868
ON THE 5th DAY OF FEBRUARY, 2009.

GRANT BUTLER

B.C.L.S.

THIS PLAN LIES WITHIN THE GREATER VANCOUVER REGIONAL DISTRICT

BOOK OF REFERENCE		
LEGAL DESCRIPTION	PARCEL	AREA (m ²)
PART ROAD DEDICATED ON PLAN BCP34319	A	190.5
PART ROAD DEDICATED ON PLAN 29427	B	108.5
PART ROAD DEDICATED ON PLAN 1981	C	202.4
PART ROAD DEDICATED ON PLAN 1981	D	863.8
PART ROAD DEDICATED ON PLAN 1981	E	117.9
TOTAL		1563.9

BUTLER SANDHOCK & ASSOCIATES
PROFESSIONAL LAND SURVEYORS
4, 1808B 94th AVENUE
SURREY, B.C. V4N 2S4
T. 604-513-0611 F. 604-513-2202
FAX: 5533
DWG: 2531-R01 REV.3