

CITY OF BURNABY

BYLAW NO. 12557

A BYLAW to amend Bylaw No. 4742, being
Burnaby Zoning Bylaw 1965

WHEREAS application for rezoning has been made to the Council;

AND WHEREAS the Council has held a public hearing thereon after duly giving notice of the hearing as prescribed by sections 892 and 893 of the *Local Government Act*, R.S.B.C. 1996;

NOW THEREFORE the Council of the City of Burnaby ENACTS as follows:

1. This Bylaw may be cited as **BURNABY ZONING BYLAW 1965, AMENDMENT BYLAW NO. 56, 2008.**
2. The map (hereinafter called "Map 'A'") attached to and forming an integral part of Bylaw No. 4742, being Burnaby Zoning Bylaw 1965, and designated as the Official Zoning Map of the City of Burnaby, is hereby amended according to the Map (hereinafter called "Map 'B'"), marginally numbered R.Z. 3712 annexed to this Bylaw, and in accordance with the explanatory legend, notations, references and boundaries designated, described, delimited and specified in particularity shown upon said Map 'B', and the various boundaries and districts shown upon said Map 'B', respectively are an amendment of and in substitution for the respective districts, designated and marked on said Map 'A' insofar as the same are changed, modified or varied thereby, and the said Map 'A' shall be deemed to be and is hereby declared to be amended accordingly and the said Map 'B' is

hereby declared to be and shall form an integral part of said Map 'A' as if originally incorporated therein and shall be interpreted accordingly.


Read a first time this 24th day of November 2008

Read a second time this 12th day of January 2009

Read a third time 19th day of January 2009

Reconsidered and adopted this 19th day of January 2009


MAYOR

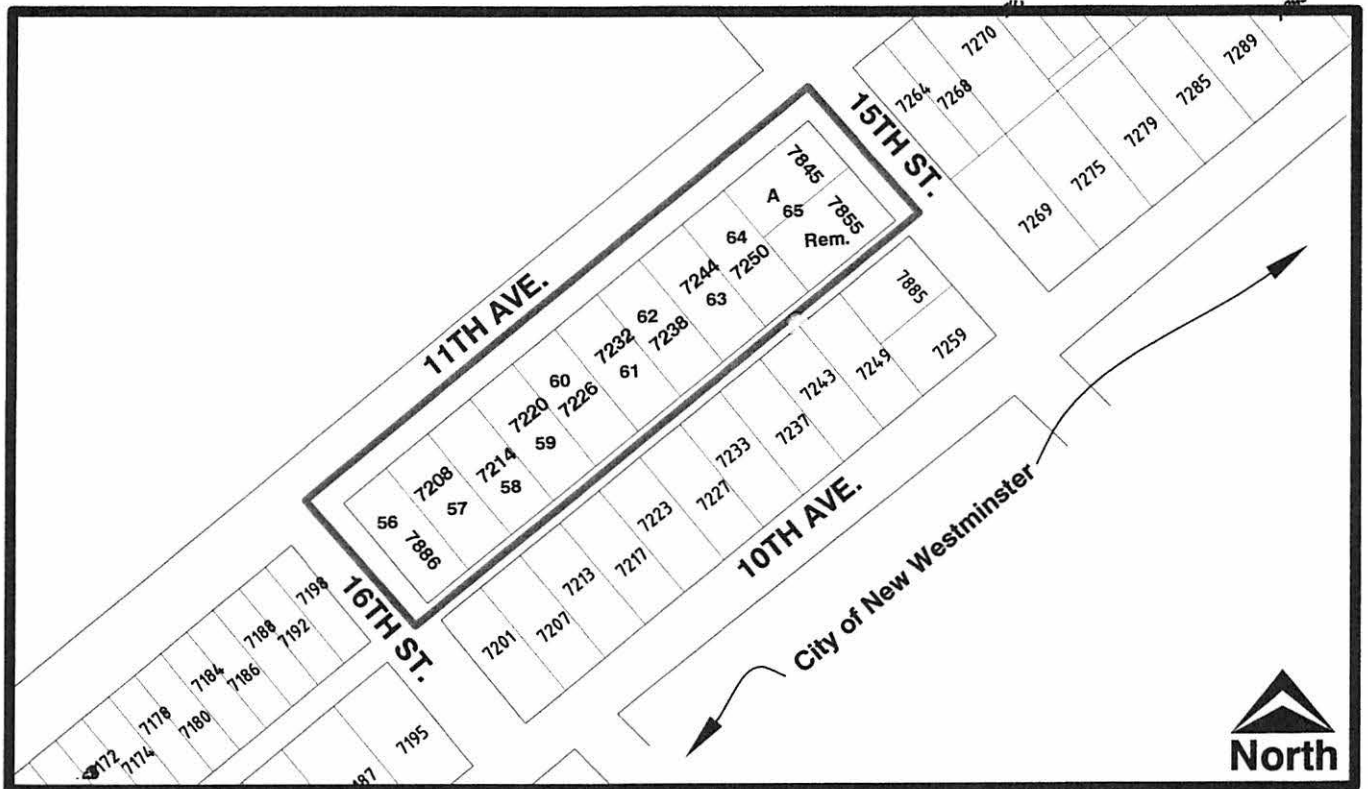

CLERK

CERTIFIED TRUE COPY
THIS 20TH DAY OF JANUARY 2009


AUTHORIZED SIGNATORY CLERK

BYLAW NUMBER 12557 BEING A BYLAW TO AMEND BYLAW NUMBER 4742 BEING BURNABY ZONING BYLAW 1965

LEGAL: See attached Schedule A



THE AREA(S) SHOWN ABOVE OUTLINED IN BLACK (—) IS (ARE) REZONED

FROM: R5 Residential District

TO: R12 Residential District



Planning and Building Department

Scale: N.T.S.

Drawn By: J.P.C.

Date: November 2008

OFFICIAL ZONING MAP

Map "B"

NO.REZ. 3712

Schedule A
Rezoning Reference #08-41

7886 16 th Street	Lot 56 District Lot 53 Group 1 New Westminster District Plan 32552	R5
7208 11 th Avenue	Lot 57 District Lot 53 Group 1 New Westminster District Plan 32552	R5
7214 11 th Avenue	Lot 58 District Lot 53 Group 1 New Westminster District Plan 32552	R5
7220 11 th Avenue	Lot 59 District Lot 53 Group 1 New Westminster District Plan 32552	R5
7226 11 th Avenue	Lot 60 District Lot 53 Group 1 New Westminster District Plan 32552	R5
7232 11 th Avenue	Lot 61 District Lot 53 Group 1 New Westminster District Plan 32552	R5
7238 11 th Avenue	Lot 62 District Lot 53 Group 1 New Westminster District Plan 32552	R5
7244 11 th Avenue	Lot 63 District Lot 53 Group 1 New Westminster District Plan 32552	R5
7250 11 th Avenue	Lot 64 District Lot 53 Group 1 New Westminster District Plan 32552	R5
7845 15 th Street	Parcel "A" (Explanatory Plan 34520) Lot 65 District Lot 53 Group 1 New Westminster District Plan 32552	R5
7855 15 th Street	Lot 65 Except: Parcel "A" (Explanatory Plan 34520) District Lot 53 Group 1 New Westminster District Plan 32552	R5