

CITY OF BURNABY

BYLAW NO. 12493

A BYLAW to amend Bylaw No. 4742, being
Burnaby Zoning Bylaw 1965

WHEREAS application for rezoning has been made to the Council;

AND WHEREAS the Council has held a public hearing thereon after duly giving notice of the hearing as prescribed by sections 892 and 893 of the *Local Government Act*, R.S.B.C. 1996;

NOW THEREFORE the Council of the City of Burnaby ENACTS as follows:

1. This Bylaw may be cited as **BURNABY ZONING BYLAW 1965, AMENDMENT BYLAW NO. 42, 2008.**
2. The map (hereinafter called "Map 'A'") attached to and forming an integral part of Bylaw No. 4742, being Burnaby Zoning Bylaw 1965, and designated as the Official Zoning Map of the City of Burnaby, is hereby amended according to the Map (hereinafter called "Map 'B'"), marginally numbered R.Z. 3698 annexed to this Bylaw, and in accordance with the explanatory legend, notations, references and boundaries designated, described, delimited and specified in particularity shown upon said Map 'B', and the various boundaries and districts shown upon said Map 'B', respectively are an amendment of and in substitution for the respective districts, designated and marked on said Map 'A' insofar as the same are changed, modified or varied thereby, and the said Map 'A' shall be deemed to be and is hereby declared to be amended accordingly and the said Map 'B' is

hereby declared to be and shall form an integral part of said Map 'A' as if originally incorporated therein and shall be interpreted accordingly.

Read a first time this 21st day of July 2008

Read a second time this 26th day of August 2008

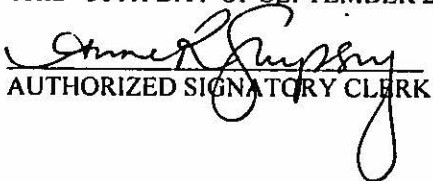
Read a third time 29th day of September 2008

Reconsidered and adopted this 29th day of September 2008


MAYOR

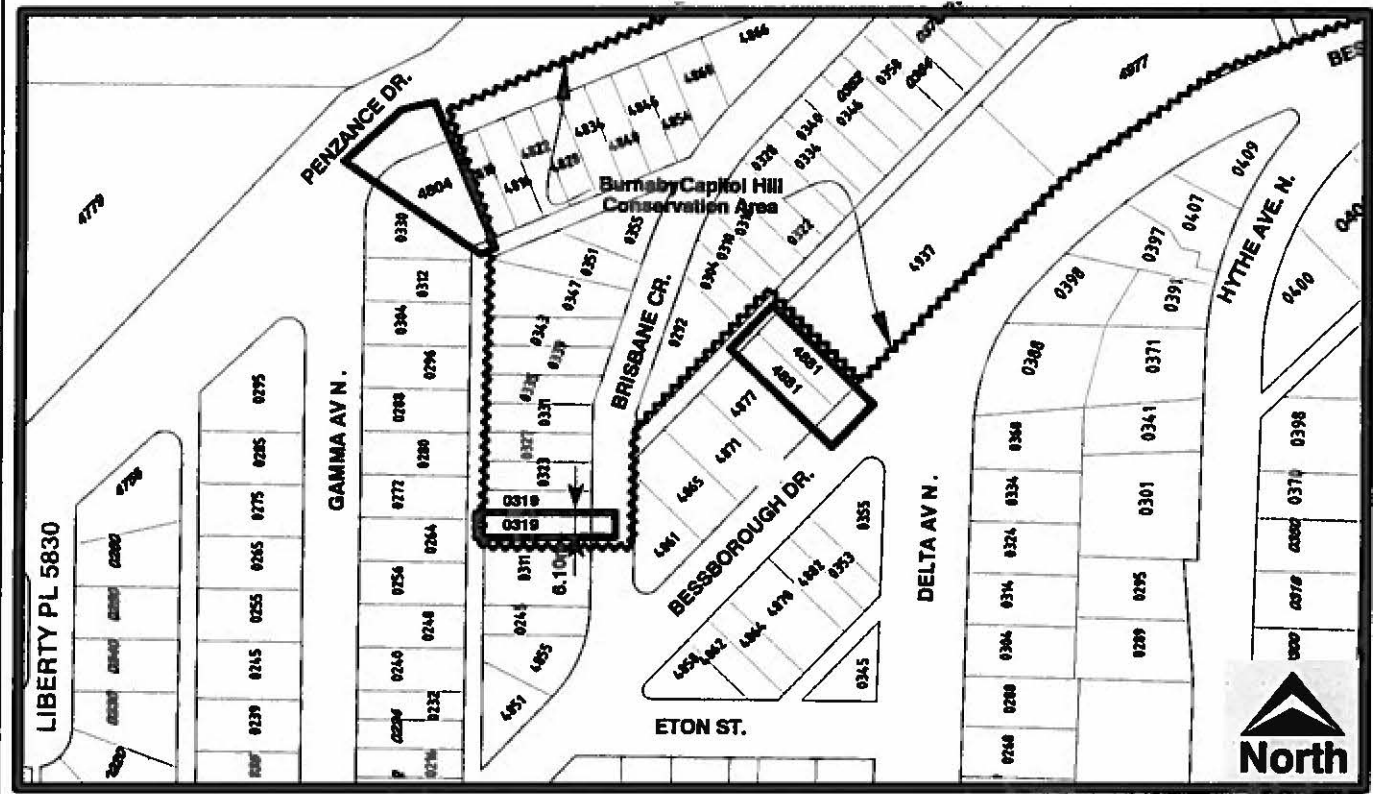

CLERK

CERTIFIED TRUE COPY
THIS 30TH DAY OF SEPTEMBER 2008


AUTHORIZED SIGNATORY CLERK

BYLAW NUMBER 12493 BEING A BYLAW TO AMEND BYLAW NUMBER 4742 BEING BURNABY ZONING BYLAW 1965

LEGAL: See attached Schedule A



THE AREA(S) SHOWN ABOVE OUTLINED IN BLACK (——) IS (ARE) REZONED

FROM: R2 Residential District

TO: P3 Park and Public Use District



Planning and Building Department

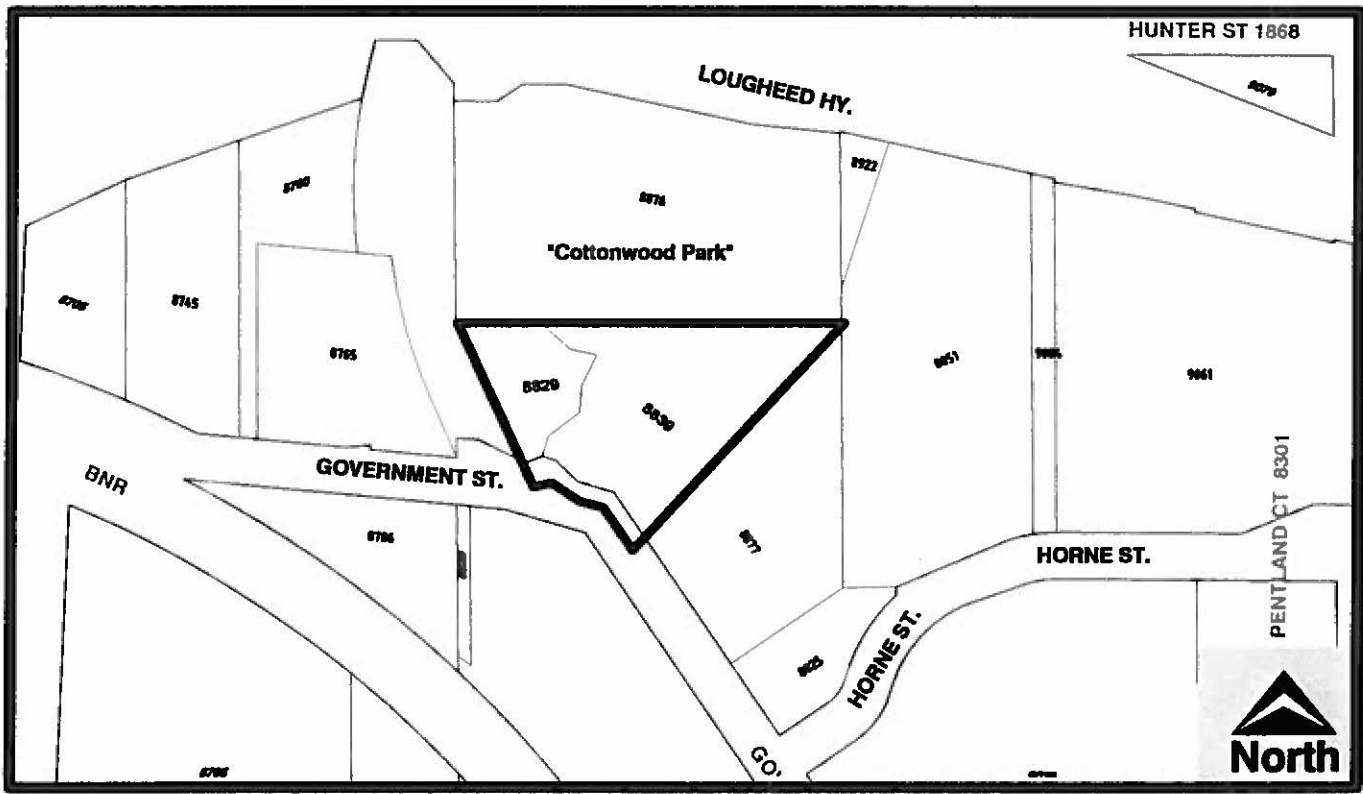
Scale: N.T.S.
Drawn By: J.P.C.
Date: July 2008

OFFICIAL ZONING MAP

**Map "B"
NO.REZ. 3698**

BYLAW NUMBER 12493 BEING A BYLAW TO AMEND BYLAW NUMBER 4742 BEING BURNABY ZONING BYLAW 1965

LEGAL: See attached Schedule A



THE AREA(S) SHOWN ABOVE OUTLINED IN BLACK (—) IS (ARE) REZONED

FROM: R1 Residential District

TO: P3 Park and Public Use District



Planning and Building Department

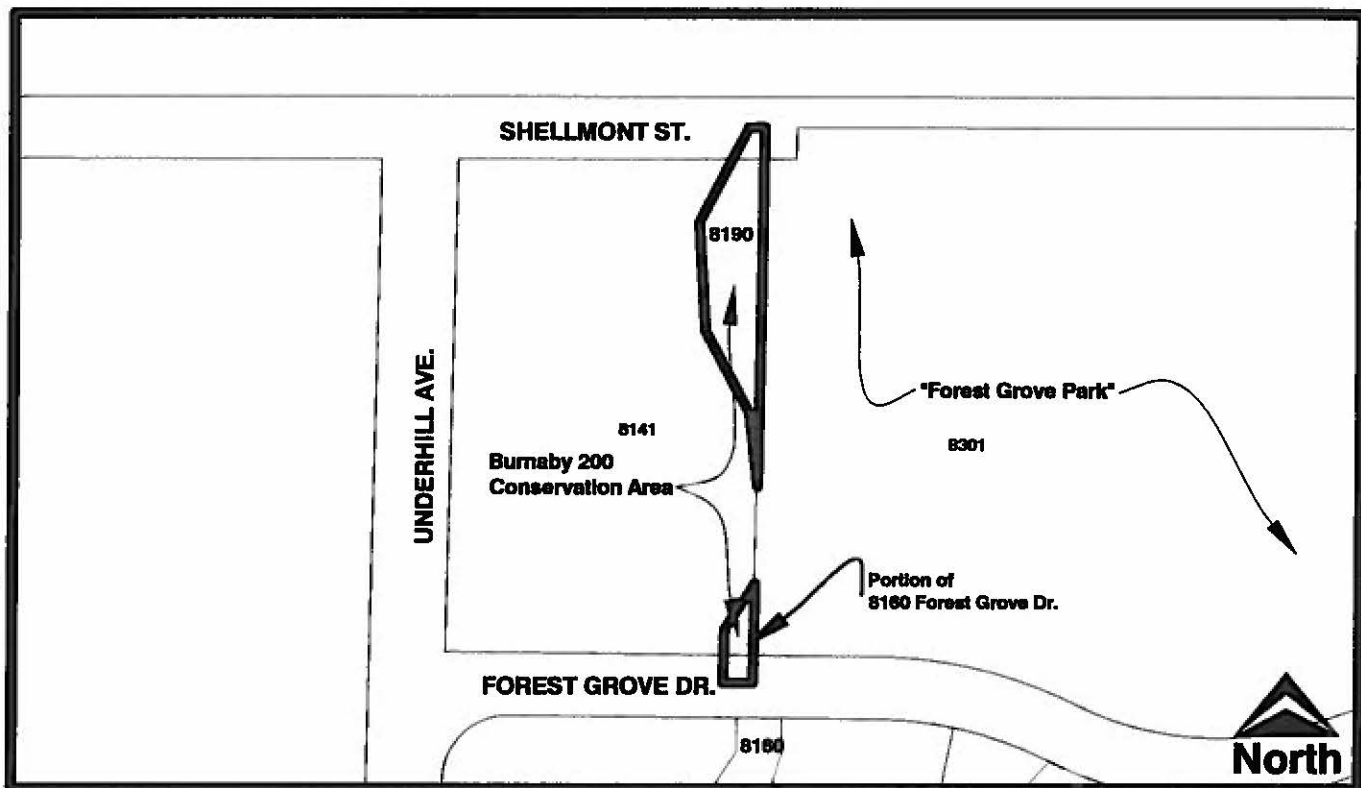
Scale: N.T.S.
Drawn By: J.P.C.
Date: July 2008

OFFICIAL ZONING MAP

Map "B"
NO.REZ. 3698

BYLAW NUMBER 12493 BEING A BYLAW TO AMEND BYLAW NUMBER 4742 BEING BURNABY ZONING BYLAW 1965

LEGAL: See attached Schedule A



THE AREA(S) SHOWN ABOVE OUTLINED IN BLACK (—) IS (ARE) REZONED

FROM: M3 Heavy Industrial District

TO: P3 Park and Public Use District



Planning and Building Department

Scale: N.T.S.

Drawn By: J.P.C.

Date: July 2008

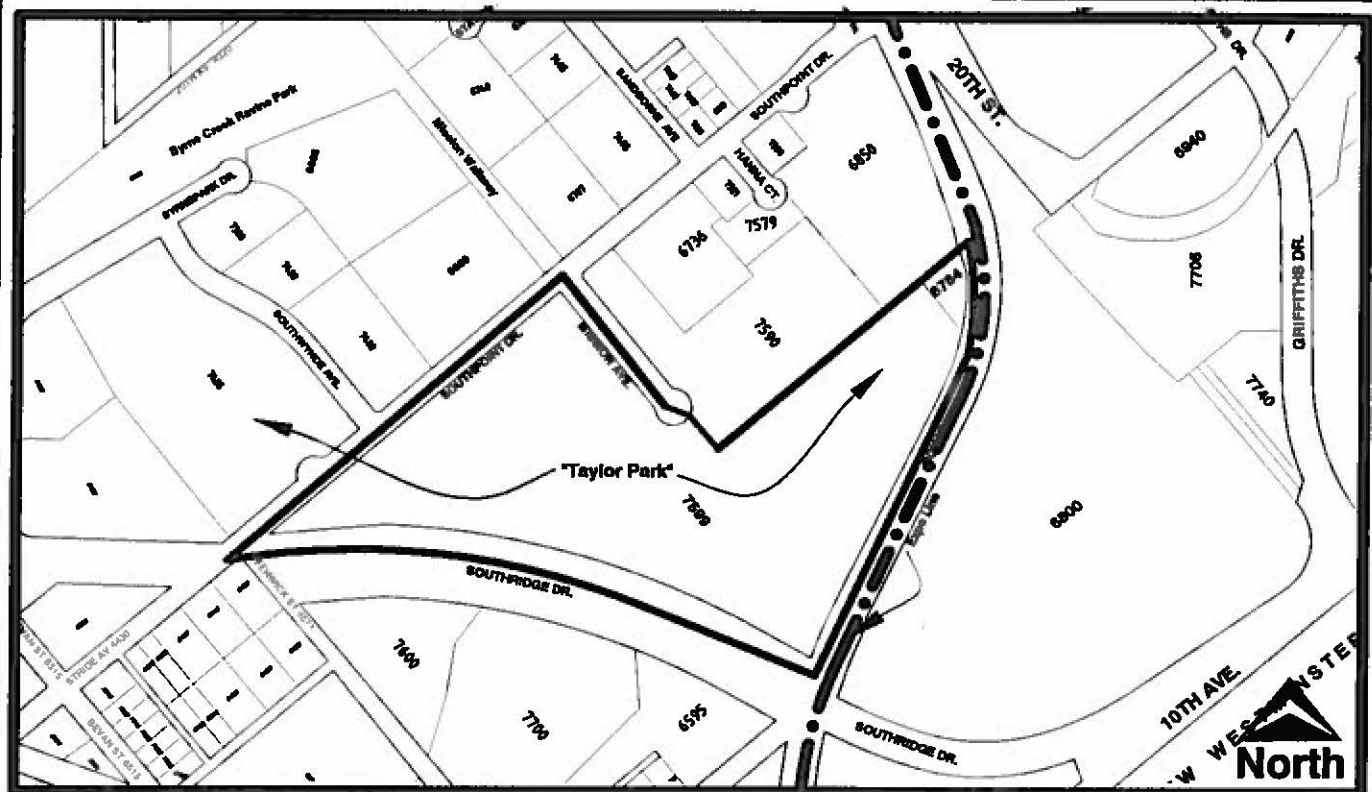
OFFICIAL ZONING MAP

Map "B"

NO.REZ. 3698

BYLAW NUMBER 12493 BEING A BYLAW TO AMEND BYLAW NUMBER 4742 BEING BURNABY ZONING BYLAW 1965

LEGAL: See attached Schedule A



THE AREA(S) SHOWN ABOVE OUTLINED IN BLACK (—) IS (ARE) REZONED

FROM: R5 Residential District

TO: P3 Park and Public Use District



Planning and Building Department

Scale: N.T.S.

Drawn By: J.P.C.

Date: July 2008

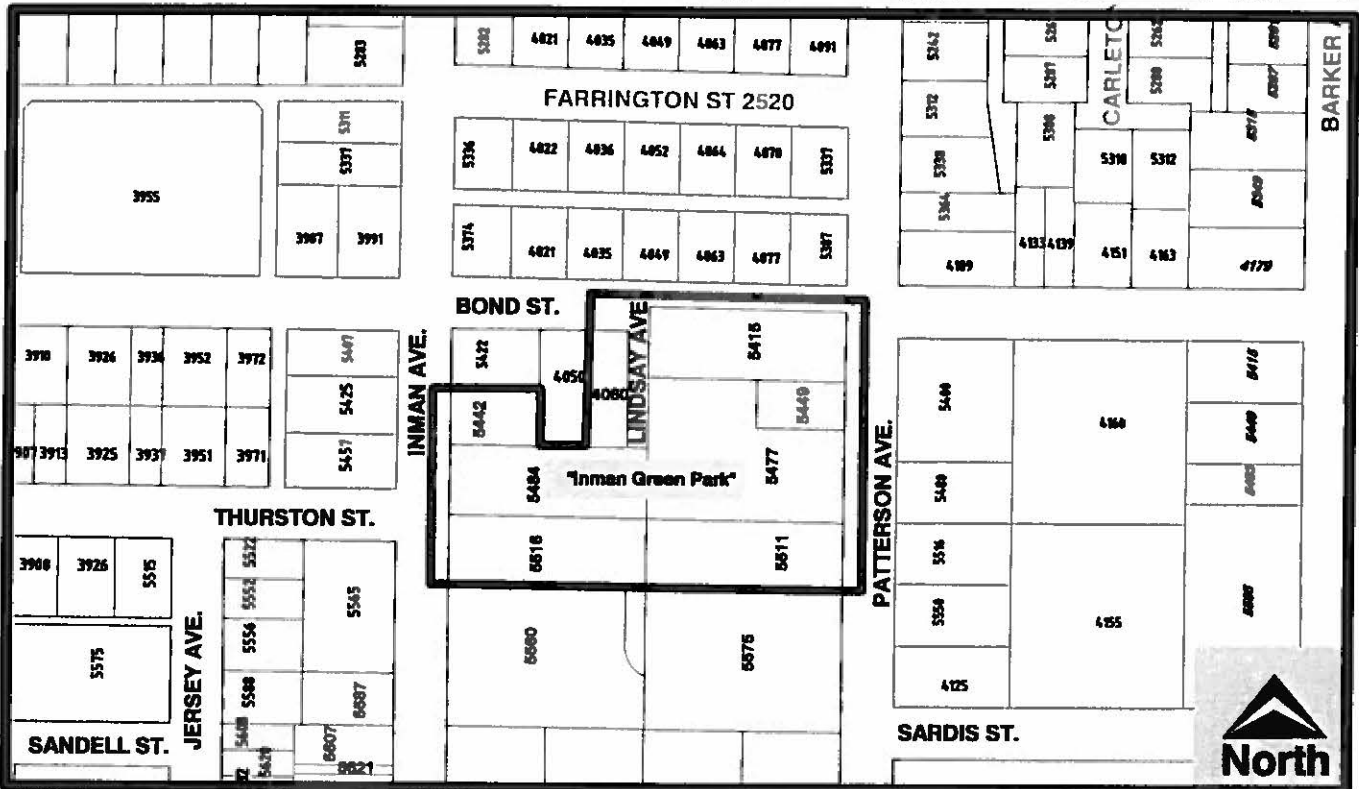
OFFICIAL ZONING MAP

Map "B"

NO.REZ. 3698

BYLAW NUMBER 12493 BEING A BYLAW TO AMEND BYLAW NUMBER 4742 BEING BURNABY ZONING BYLAW 1965

LEGAL: See attached Schedule A



THE AREA(S) SHOWN ABOVE OUTLINED IN BLACK (—) IS (ARE) REZONED

FROM: R5 Residential District

TO: P3 Park and Public Use District



Planning and Building Department

Scale: N.T.S.

Drawn By: J.P.C.

Date: July 2008

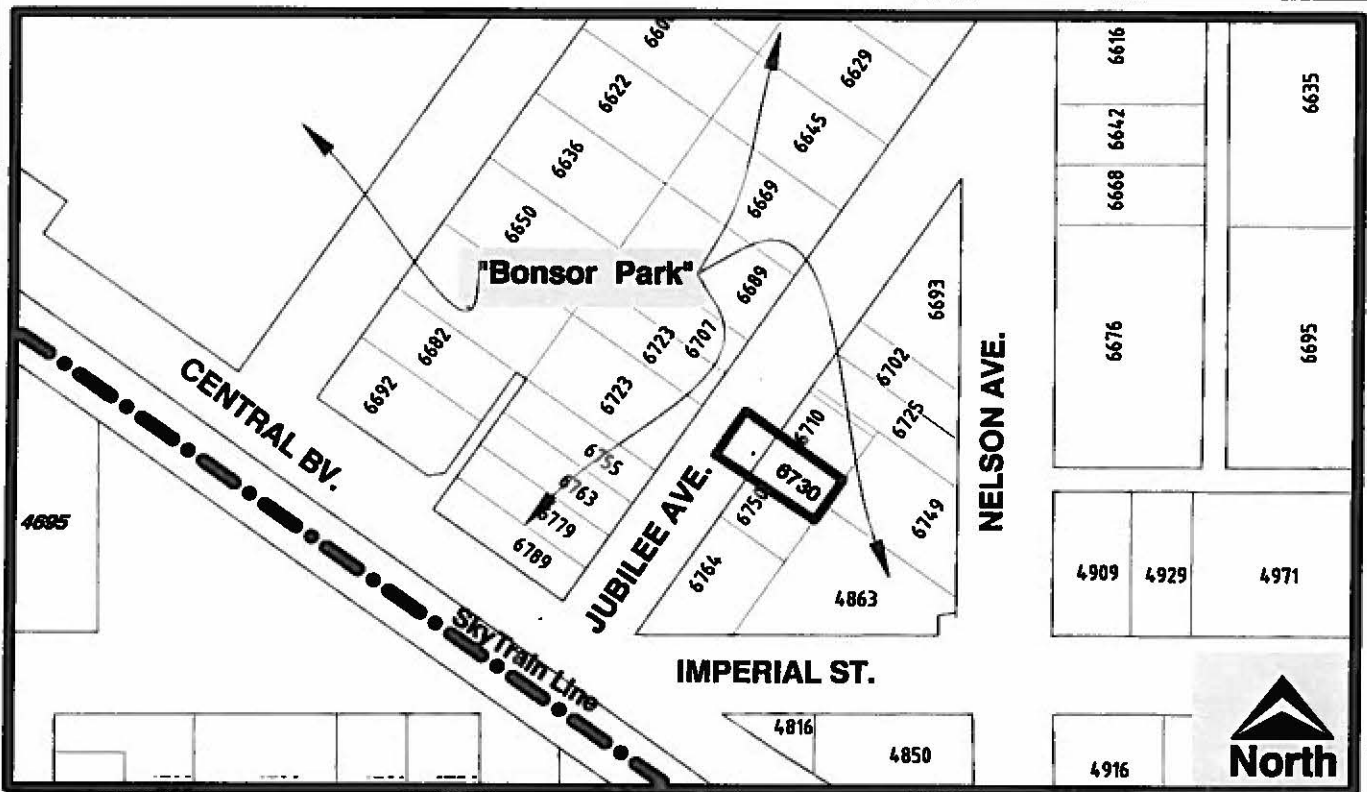
OFFICIAL ZONING MAP

Map "B"

NO.REZ. 3698

BYLAW NUMBER 12493 BEING A BYLAW TO AMEND BYLAW NUMBER 4742 BEING BURNABY ZONING BYLAW 1965

LEGAL: See attached Schedule A



THE AREA(S) SHOWN ABOVE OUTLINED IN BLACK (——) IS (ARE) REZONED

FROM: C2 Community Commercial District

TO: P3 Park and Public Use District



Planning and Building Department

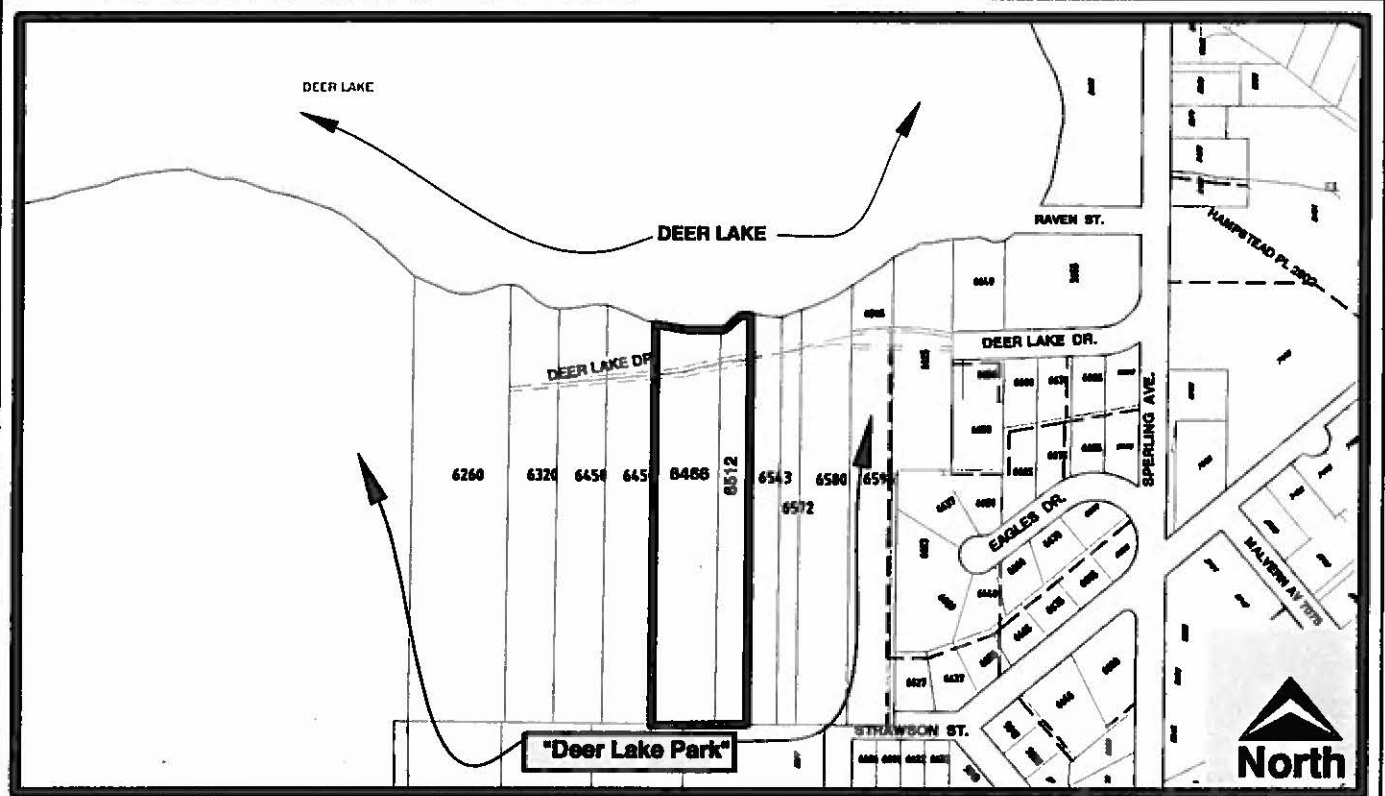
Scale: N.T.S.
Drawn By: J.P.C.
Date: July 2008

OFFICIAL ZONING MAP

Map "B"
NO.REZ. 3698

BYLAW NUMBER 12493 BEING A BYLAW TO AMEND BYLAW NUMBER 4742 BEING BURNABY ZONING BYLAW 1965

LEGAL: See attached Schedule A



THE AREA(S) SHOWN ABOVE OUTLINED IN BLACK (—) IS (ARE) REZONED

FROM: R1 Residential District

TO: P3 Park and Public Use District



Planning and Building Department

Scale: N.T.S.
Drawn By: J.P.C.
Date: July 2008

OFFICIAL ZONING MAP **Map "B"**
NO.REZ.3698

**Rezoning Reference #08-18
Schedule A**

<u>Capitol Hill Conservation Area</u>		Zoning
Ptn. 319 Brisbane Crescent	Lot 95, D.L. 188, Group 1, NWD Plan 55892	R2
4881 Bessborough Drive	Lots 29 & 30, Blk 34, D.L. 188, Group 1, NWD Plan 4953	R2
4804 Penzance Drive	Lot 22, Blk 35, D.L. 188, Group 1, NWD Plan 4953	R2
<u>Cottonwood Park</u>		
8839 Government Street	Lot 1 Except: Part on Plan with Bylaw file 35822, D.L. 4, Group 1, NWD Plan 12127	R1
8829 Government Street	Lot D Except: Plan 28760, D.L. 4, Plan 16063	
<u>Burnaby 200 Conservation Area</u>		
8190 Shellmont Street	Lot 103, D.L. 142, Group 1, NWD Plan 57820	M3
Ptn. 8160 Forest Grove Drive	Lot 106, D.L. 142/143, Group 1, NWD Plan 57820	M3
<u>Taylor Park</u>		
7599 Mission Avenue	Lot B, D.L. 171, Group 1, NWD Plan LMP42670	R5
6784 – 14th Avenue	Lot 2, D.L. 171, Group 1, NWD Plan LMP51518	R5
<u>Inman Green Park</u>		
5415 Patterson Avenue	East Half of the North Two-Thirds Lot 31 Except: Parcel "A" (Ref. Pl. 7382), D.L. 34, Group 1, NWD Plan 849	R5
5449 Patterson Avenue	Lot 1, D.L. 34, Group 1, NWD Plan 22190	R5
5477 Patterson Avenue	Lot 2, D.L. 34, Group 1, NWD Plan 22190	R5
5511 Patterson Avenue	East Half of the South Third Lot 31, D.L. 34, Group 1, NWD Plan 849	R5
5442 Inman Avenue	Lot 2, D.L. 34, Group 1, NWD Plan 18137	R5
5484 Inman Avenue	West Half of the South Third of Lot 31, D.L. 34, Group 1, NWD Plan 849	R5
5516 Inman Avenue	West Hal of the North One Third, Blk 32, D.L. 34, Group 1, NWD Plan 849	R5
4060 Bond Street	Lot B, D.L. 34, Group 1, NWD Plan 18500	R5
Ptn. Of Lindsay Avenue	south of Bond Street, adjacent and east of Lot B, D.L. 34, Group 1, NWD Plan 18500	R5
<u>Bonsor Park</u>		
6730 Jubilee Avenue	Lot 57, D.L. 152, Group 1, NWD Plan 25680	C2
<u>Deer Lake Park</u>		
6466 Deer Lake Drive	Parcel "A" (Expl. Pl. 9160), D.L. 85, Group 1, Except: East 4.99 ft., Plan 25736, NWD	R1
6512 Deer Lake Drive	Lot 89, D.L. 85, Group 1, NWD Plan 25736	R1