

**CITY OF BURNABY**

**BYLAW NO. 12490**

A BYLAW to close and remove the dedication of  
a certain portion of highway

WHEREAS pursuant to section 40 of the *Community Charter*, SBC 2003 and section 120 of the *Land Title Act* the Council may by bylaw close part of a highway to traffic and remove the dedication of that part of the highway;

AND WHEREAS the Council, before adopting this Bylaw, has caused the required statutory public notice of its intention to be given by advertisement;

AND WHEREAS the Council deems it expedient and in the public interest to stop up and close to traffic and remove the dedication of that portion of highway more particularly hereinafter described;

NOW THEREFORE the Council of the City of Burnaby ENACTS as follows:

1. This Bylaw may be cited as **BURNABY HIGHWAY CLOSURE BYLAW NO. 4, 2008.**
2. ALL AND SINGULAR that certain parcel or tract of land, situate, lying and being in the City of Burnaby, in the Province of British Columbia, more particularly known and described as all that portion of road in District Lot 28, Group 1, New Westminster District, dedicated by Plan 627 containing 12.8m<sup>2</sup> (hereinafter called "the closed portion of road") shown outlined and described as Parcel A on Reference Plan prepared by Robert G. Flynn, B.C.L.S., and deposited in the Land Title Office under Number BCP\_\_\_\_\_, a copy of which is hereunto annexed (hereinafter called "the plan") is hereby closed to all types of traffic.

3. The dedication of the closed portion of road as highway is removed.

Read a first time this 21<sup>st</sup> day of July 2008

Read a second time this 21<sup>st</sup> day of July 2008

Read a third time this 21<sup>st</sup> day of July 2008

Reconsidered and adopted this 8<sup>th</sup> day of September 2008

  
MAYOR

  
CLERK

CERTIFIED TRUE COPY  
THIS 9<sup>TH</sup> DAY OF SEPTEMBER 2008

  
AUTHORIZED SIGNATORY CLERK

**PLAN BCP**

DEPOSITED IN THE LAND TITLE OFFICE  
AT NEW WESTMINSTER, B.C.  
THIS \_\_\_\_\_ DAY OF \_\_\_\_\_, 2008

DEDICATED BY PLAN 627, D. L. 28 GROUP 1 N. W. D.

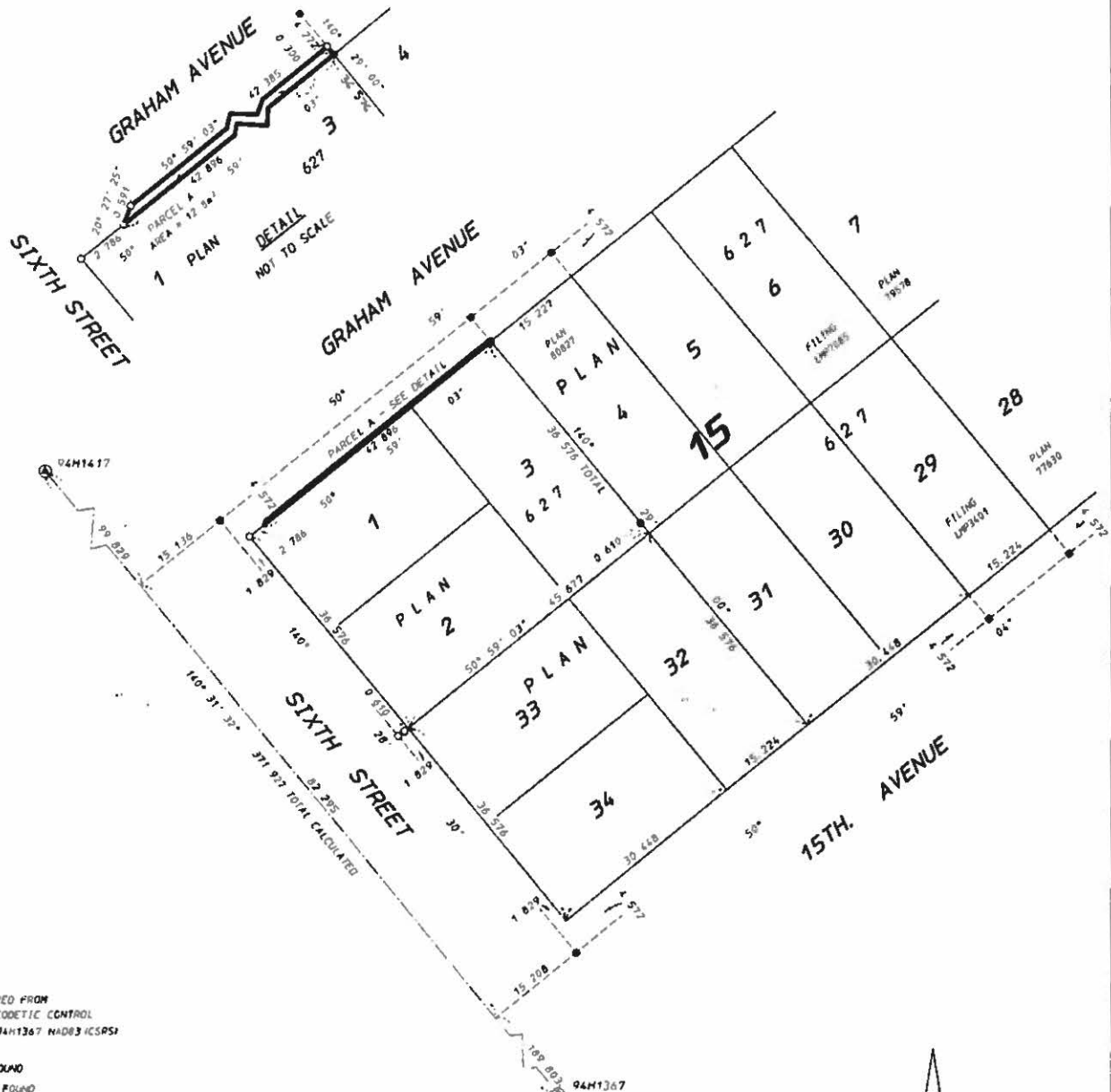
CITY OF BURNABY B. C. G. S. 92G 026 INTEGRATED SURVEY AREA No 25

**REGISTRAR**

REFERENCE NO. \_\_\_\_\_

Scale 1 500

All distances are in metres



**LEGEND**

GRID BEARINGS ARE DERIVED FROM  
OBSERVATIONS BETWEEN GEODETIC CONTROL  
MONUMENTS 94H1617 AND 94H1367 NAD83 (ICSR5)

- Ⓐ CONTROL MONUMENT FOUND
- STANDARD IRON POST FOUND
- LEAD PLUG FOUND
- STANDARD IRON POST PLACED
- ◐ LEAD PLUG PLACED

THIS PLAN SHOWS HORIZONTAL GROUND  
LEVEL DISTANCES EXCEPT WHERE  
OTHERWISE NOTED TO COMPUTE GRID  
DISTANCES, MULTIPLY GROUND LEVEL  
DISTANCES BY COMBINED FACTOR 0.9995846

THIS PLAN LIES WITHIN THE GREATER VANCOUVER REGIONAL DISTRICT

LYON, FLYNN & COLLINS

British Columbia Land Surveyors  
102 - 1537 W 8th Avenue  
Vancouver, B.C. V6J 1T5  
Tel 737-8777 Fax 737-8794  
E-mail [lxong@telus.net](mailto:lxong@telus.net)

© LYON, FLANN & COLLINS 2001

FILE: 06 - 348, XCH

CITY OF BURNABY

**AUTHORIZED SIGNATORY**

PRINTED NAME

AUTHORIZED SIGNATORY

PRINTED NAME

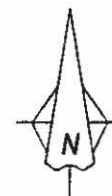
WITNESS TO ABOVE SIGNATURES -

## WELLNESS

PRINTED NAME

ADDRESS OF WITNESS

OCCUPATION OF WITNESS



1. ROBERT G. FLYNN, A BRITISH COLUMBIA LAND SURVEYOR OF RICHMOND IN BRITISH COLUMBIA, CERTIFY THAT I WAS PRESENT AT AND PERSONALLY SUPERINTENDED THE SURVEY REPRESENTED BY THIS PLAN, AND THAT THE SURVEY AND PLAN ARE CORRECT. THE FIELD SURVEY WAS COMPLETED ON THE 2ND DAY OF JANUARY, 2008. THE PLAN WAS COMPLETED AND CHECKED, AND THE CHECKLIST FILED UNDER HQ 75-608, ON THE 07th DAY OF JANUARY, 2008

Robert Costello C.I.S.