

CITY OF BURNABY

BYLAW NO. 12462

A BYLAW to close and remove the dedication of
certain portions of highway

WHEREAS pursuant to section 40 of the *Community Charter*, SBC 2003 and section 120 of the *Land Title Act* the Council may by bylaw close part of a highway to traffic and remove the dedication of that part of the highway;

AND WHEREAS the Council, before adopting this Bylaw, has caused the required statutory public notice of its intention to be given by advertisement;

AND WHEREAS the Council deems it expedient and in the public interest to stop up and close to traffic and remove the dedication of those portions of highway more particularly hereinafter described;

NOW THEREFORE the Council of the City of Burnaby ENACTS as follows:

1. This Bylaw may be cited as **BURNABY HIGHWAY CLOSURE BYLAW NO. 3, 2008.**
2. ALL AND SINGULAR those certain parcels or tracts of land, situate, lying and being in the City of Burnaby, in the Province of British Columbia, more particularly known and described as all those portions of road in Group 1, New Westminster District:
 - (a) District Lot 124, dedicated as road by Plan 1543 containing 0.132 ha,
 - (b) District Lot 125, dedicated as road by Plan 3069 containing 0.128 ha,
 - (c) District Lot 124, dedicated as road on Plan 1543 containing 0.138 ha, and
 - (d) District Lot 125, dedicated as road on Plan 3069 containing 0.137 ha,

(hereinafter called "the closed portions of road") shown outlined and described as Parcels A, B, C and D, respectively, on Reference Plan prepared by Gregory Marston, B.C.L.S., and deposited in the Land Title Office under Number BCP _____, a copy of which is hereunto annexed is hereby closed to all types of traffic.

3. The dedication of the closed portions of road as highway is removed.

Read a first time this 16th day of June 2008

Read a second time this 16th day of June 2008

Read a third time this 16th day of June 2008

Reconsidered and adopted this 8th day of July 2008


MAYOR


D. CLERK

CERTIFIED TRUE COPY
THIS 8TH DAY OF JULY 2008

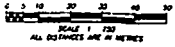


AUTHORIZED SIGNATORY CLERK

REFERENCE PLAN TO ACCOMPANY THE CITY OF BURNABY
 ROAD CLOSURE BYLAW No. _____ TO REMOVE THE ROAD
 DEDICATION OF PORTIONS OF ROAD DEDICATED BY PLAN 1543,
 DISTRICT LOT 124 AND BY PLAN 3069, DISTRICT LOT 125,
 BOTH OF GROUP 1, NEW WESTMINSTER DISTRICT

PLAN BCP
 DEPOSITED IN THE LAND TITLE OFFICE
 AT NEW WESTMINSTER, B.C.
 THIS DAY OF _____, 2008
 REGISTERED
 REP:

B.C.G.S. 926.026



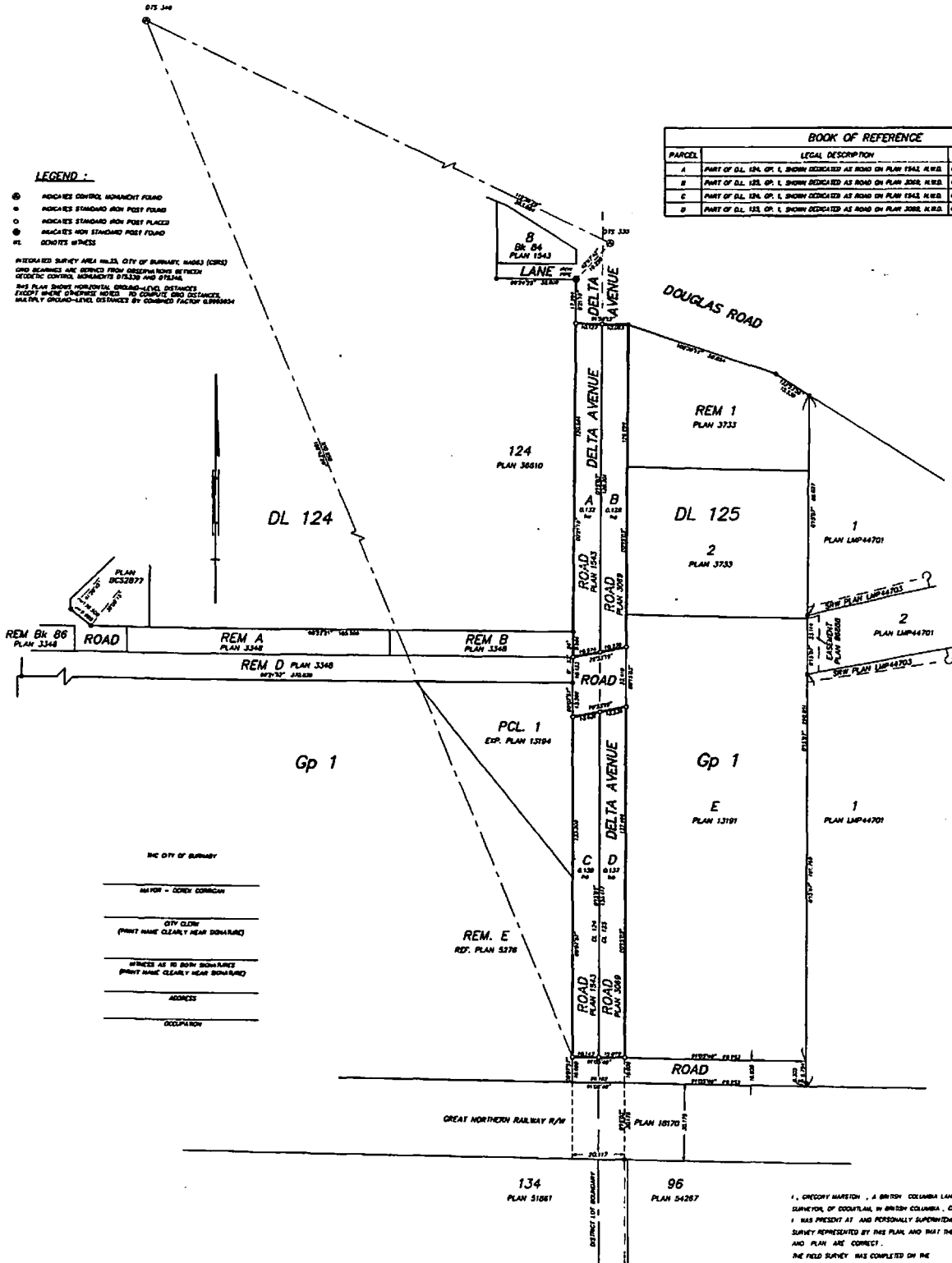
PURSUANT TO SECTION 120 OF THE LAND TITLE ACT & SECTION 40 OF THE COMMUNITY CHARTER

LEGEND:

- ⊙ INDICATES CONTROL MONUMENT FOUND
- INDICATES STANDARD IRON POST FOUND
- INDICATES STANDARD IRON POST PLACED
- INDICATES NON STANDARD POST FOUND
- ≡ INDICATES IRONNESS

REGULATED SURVEY AREA (RSA), CITY OF BURNABY, (CORS) AND BEARINGS ARE DERIVED FROM OBSERVATIONS BETWEEN METRIC CONTROL MONUMENTS 075330 AND 075340. THIS PLAN SHOWS HORIZONTAL GRADING-LEVEL DISTANCES EXCEPT WHERE OTHERWISE NOTED. TO COMPUTE GRID DISTANCES, MULTIPLY GRADING-LEVEL DISTANCES BY CORRECTION FACTOR 0.999844.

BOOK OF REFERENCE		
PARCEL	LEGAL DESCRIPTION	AREA
A	PART OF D.L. 124, Q.P. 1, SHOWN DEDICATED AS ROAD ON PLAN 1543, AREA	0.1322 Ha
B	PART OF D.L. 125, Q.P. 1, SHOWN DEDICATED AS ROAD ON PLAN 3069, AREA	0.1230 Ha
C	PART OF D.L. 124, Q.P. 1, SHOWN DEDICATED AS ROAD ON PLAN 1543, AREA	0.1230 Ha
D	PART OF D.L. 125, Q.P. 1, SHOWN DEDICATED AS ROAD ON PLAN 3069, AREA	0.1237 Ha



THE CITY OF BURNABY
 MAYOR - COREY CORRY
 CITY CLERK
 (PRINT NAME CLEARLY NEAR SIGNATURE)
 WITNESSES AS TO BOTH SIGNATURES
 (PRINT NAME CLEARLY NEAR SIGNATURE)
 ADDRESS
 OCCUPATION

I, CHECOFF HARTCH, A BRITISH COLUMBIA LAND SURVEYOR OF GOOD FAME IN BRITISH COLUMBIA, CERTIFY THAT I WAS PRESENT AT AND PERSONALLY SUPERVISED THE SURVEY REPRESENTED BY THIS PLAN AND THAT THE SURVEY AND PLAN ARE CORRECT.
 THE FIELD SURVEY WAS COMPLETED ON THE 21st DAY OF MAY, 2008.
 THE PLAN WAS COMPLETED AND CHECKED AND THE CHECKLIST FILED UNDER # 81337 ON THE 21st DAY OF MAY, 2008.

MURRAY & ASSOCIATES
 201-12288 ARDEN AVENUE
 SUITE 201, B.C.
 VAN, BC
 (604) 582-3183

THIS PLAN LIES WITHIN THE GREATER VANCOUVER REGIONAL DISTRICT
 (CITY OF BURNABY)

[Signature]
 B.C.L.S.
 FILE 9270-02