

CITY OF BURNABY

BYLAW NO. 12443

A BYLAW to amend Bylaw No. 4742, being Burnaby Zoning Bylaw 1965, as amended by Bylaw Nos. 7036, 10915, and 10954, being Burnaby Zoning Bylaw 1965, Amendment Bylaw No. 25, 1977, No. 17, 1999 and No. 28, 1999

WHEREAS application for rezoning has been made to the Council;

AND WHEREAS the Council has held a public hearing thereon after duly giving notice of the time and place of such hearing as prescribed by Sections 892 and 893 of the *Local Government Act*, R.S.B.C. 1996;

NOW THEREFORE the Council of the City of Burnaby ENACTS as follows:

1. This Bylaw may be cited as **BURNABY ZONING BYLAW 1965, AMENDMENT BYLAW NO. 19, 2008.**

2. Bylaw No. 4742, as amended by Bylaw Nos. 7036, 10915 and 10954, is further amended as follows:

(a) The Map (hereinafter called "Map 'A'"), attached to and forming an integral part of Bylaw No. 4742, being "Burnaby Zoning Bylaw 1965", and designated as the Official Zoning Map of the City of Burnaby, is hereby amended according to the Map (hereinafter called "Map 'B'"), marginally numbered R.Z. 3677, annexed to this Bylaw, and in accordance with the explanatory legend, notations, references and boundaries designated, described, delimited and specified in particularity shown upon said Map 'B'; and the various boundaries and districts shown upon said Map 'B' respectively are an amendment of and in addition to the respective districts, designated and marked on said Map 'A' insofar as the same are changed, modified or varied thereby, and the said Map 'A' shall be deemed to be and is hereby declared to be amended accordingly and the said Map

Map 'A' shall be deemed to be and is hereby declared to be amended accordingly and the said Map 'B' is hereby declared to be and shall form an integral part of said Map 'A', as if originally incorporated therein and shall be interpreted accordingly.

(b) The Comprehensive Development Plan more particularly described in Bylaw Nos. 7036, 10915, and 10954 are amended as may be necessary by the development plan entitled "MAIL-O-MATIC MEZZANINE/BUILDING LAYOUT" prepared by HI-CUBE STORAGE PRODUCTS LTD. and on file in the office of the Director Planning and Building; and any development on the lands rezoned by this Bylaw shall be in conformity with the said Comprehensive Development Plan as amended.

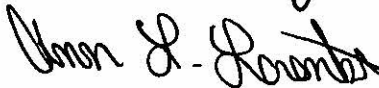
Read a first time this 7th day of April 2008

Read a second time this 5th day of May 2008

Read a third time 12th day of May 2008

Reconsidered and adopted this 12th day of May 2008


MAYOR



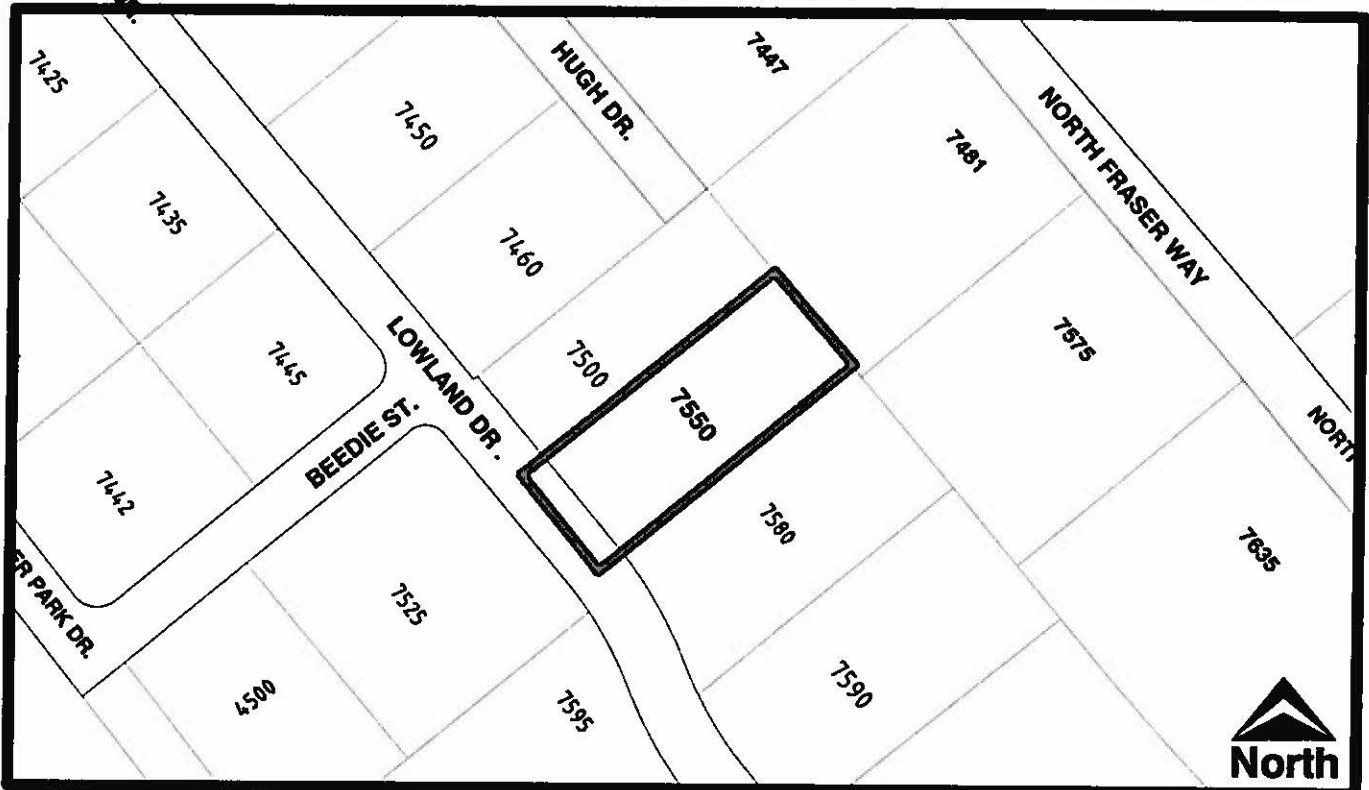
A/DEPUTY CLERK

CERTIFIED A TRUE COPY
THIS 13th DAY OF MAY 2008


AUTHORIZED SIGNATORY CLERK

BYLAW NUMBER 12443 BEING A BYLAW TO AMEND BYLAW NUMBER 4742 BEING BURNABY ZONING BYLAW 1965

LEGAL: Lot A, D.L. 166A, Group 1, NWD Plan LMP41947



THE AREA(S) SHOWN ABOVE OUTLINED IN BLACK (==) IS (ARE) REZONED

FROM: CD Comprehensive Development District (based on M2 General Industrial District and M5 Light Industrial District)

TO: CD Comprehensive Development District (based on M2 General Industrial District, M5 Light Industrial District, Big Bend Development Plan guidelines and in accordance with the development plan entitled "Mail-o-Matic Mezzanine/Building Layout" prepared by Hi-Cube Storage Products Ltd.)



Planning and Building Department

Scale: N.T.S.
Drawn By: J.P.C.
Date: April 2008

OFFICIAL ZONING MAP

Map "B"
NO.REZ. 3677