

**CITY OF BURNABY**

**BYLAW NO. 12423**

A BYLAW to close and remove the dedication of  
a certain portion of highway

WHEREAS pursuant to section 40 of the *Community Charter*, SBC 2003 and section 120 of the *Land Title Act* the Council may by bylaw close part of a highway to traffic and remove the dedication of that part of the highway;

AND WHEREAS the Council, before adopting this Bylaw, has caused the required statutory public notice of its intention to be given by advertisement;

AND WHEREAS the Council deems it expedient and in the public interest to stop up and close to traffic and remove the dedication of that portion of highway more particularly hereinafter described;

NOW THEREFORE the Council of the City of Burnaby ENACTS as follows:

1. This Bylaw may be cited as **BURNABY HIGHWAY CLOSURE BYLAW NO. 2, 2008.**
2. ALL AND SINGULAR that certain parcel or tract of land, situate, lying and being in the City of Burnaby, in the Province of British Columbia, more particularly known and described as all that portion of road in District Lot 151, Group 1, New Westminster District, dedicated by Plan 1319 containing 714.5m<sup>2</sup> (hereinafter called "the closed portion of road") shown outlined and described as Parcel A on Reference Plan prepared by Kenneth W. Schuuman, B.C.L.S., and deposited in the Land Title Office under Number BCP\_\_\_\_\_, a copy of which is hereunto annexed (hereinafter called "the plan") is hereby closed to all types of traffic.

3. The dedication of the closed portion of road as highway is removed.


Read a first time this 11<sup>th</sup> day of February 2008

Read a second time this 11<sup>th</sup> day of February 2008

Read a third time this 11<sup>th</sup> day of February 2008

Reconsidered and adopted this 7<sup>th</sup> day of April 2008

  
MAYOR

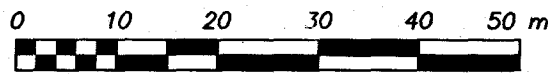
  
CLERK

CERTIFIED A TRUE COPY  
THIS 8<sup>th</sup> DAY OF APRIL 2008

  
\_\_\_\_\_  
AUTHORIZED SIGNATORY CLERK

REFERENCE PLAN TO ACCOMPANY ROAD CANCELLATION BYLAW  
NO. \_\_\_\_\_ COVERING ROAD SHOWN ON PLAN 1319, BLOCK 34,  
DISTRICT LOT 151, GROUP 1, N.W.D.

Pursuant to Section 120 of the Land Title Act & Section 40 Community Charter  
City of Burnaby BCGS 92G.025



SCALE — 1 : 750

All distances are in metres

The intended plot size of this plan is  
560mm in width by 432mm in height  
when plotted at a scale of 1:750

Grid Bearings are derived from observations  
between Control Monuments 87H3255 & 87H3257

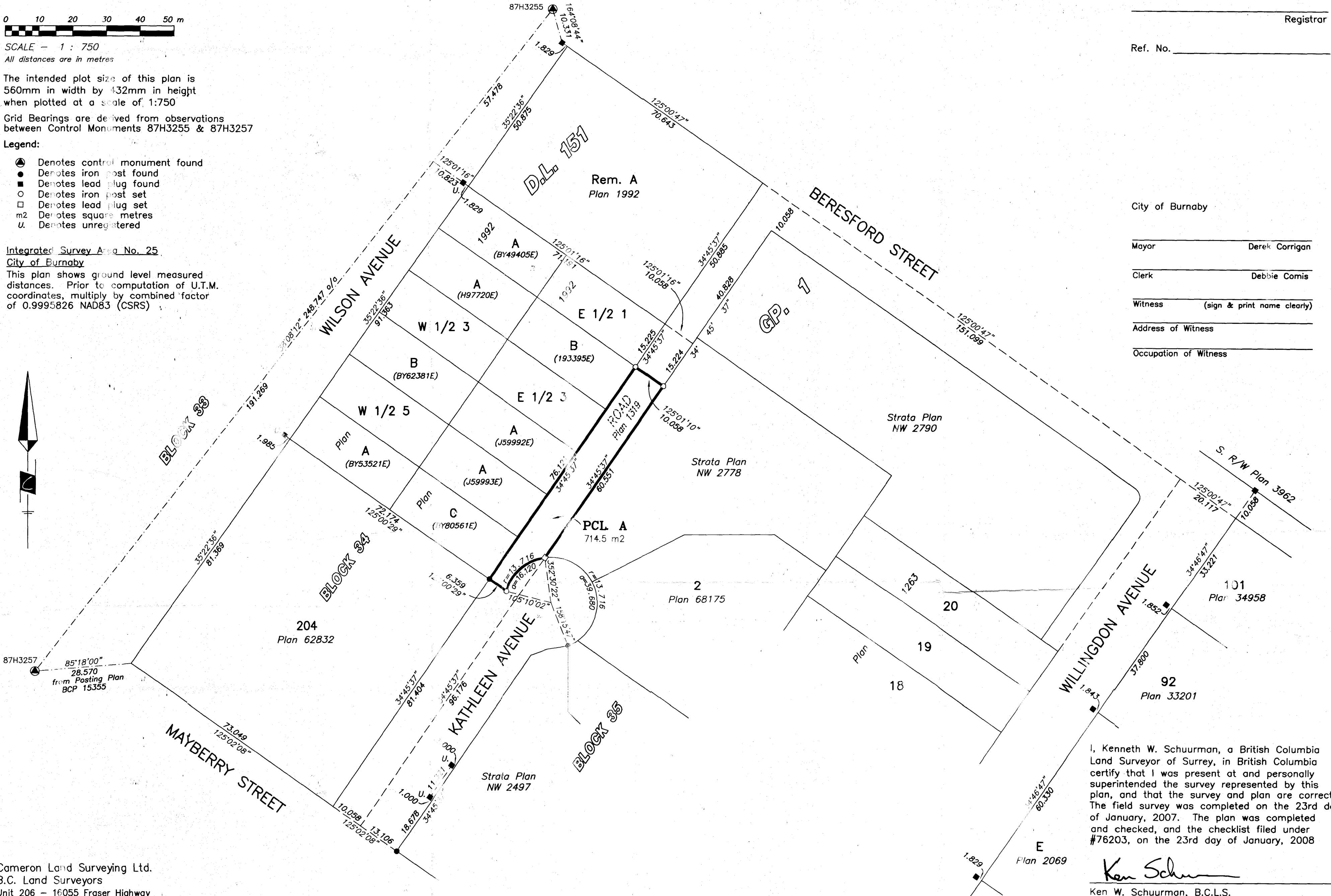
Legend:

- Denotes control monument found
- Denotes iron post found
- Denotes lead plug found
- Denotes iron post set
- Denotes lead plug set
- m2 Denotes square metres
- U. Denotes unregistered

Integrated Survey Area No. 25

City of Burnaby

This plan shows ground level measured  
distances. Prior to computation of U.T.M.  
coordinates, multiply by combined factor  
of 0.9995826 NAD83 (CSRS)



PLAN BC

Deposited in the Land Title Office at  
New Westminster, B.C. this \_\_\_\_\_ day  
of \_\_\_\_\_, 2008.

Registrar

Ref. No. \_\_\_\_\_

City of Burnaby

Mayor \_\_\_\_\_ Derek Corrigan

Clerk \_\_\_\_\_ Debbie Comis

Witness \_\_\_\_\_ (sign & print name clearly)

Address of Witness \_\_\_\_\_

Occupation of Witness \_\_\_\_\_

I, Kenneth W. Schuurman, a British Columbia  
Land Surveyor of Surrey, in British Columbia  
certify that I was present at and personally  
superintended the survey represented by this  
plan, and that the survey and plan are correct.  
The field survey was completed on the 23rd day  
of January, 2007. The plan was completed  
and checked, and the checklist filed under  
#76203, on the 23rd day of January, 2008

*Ken Schuurman*  
Ken W. Schuurman, B.C.L.S.

Cameron Land Surveying Ltd.  
B.C. Land Surveyors  
Unit 206 - 16055 Fraser Highway  
Surrey, B.C. V4N 0G2  
Phone: 604-597-3777  
Fax: 604-597-3783

This plan lies within the Greater Vancouver Regional District

File: 4543-REF1